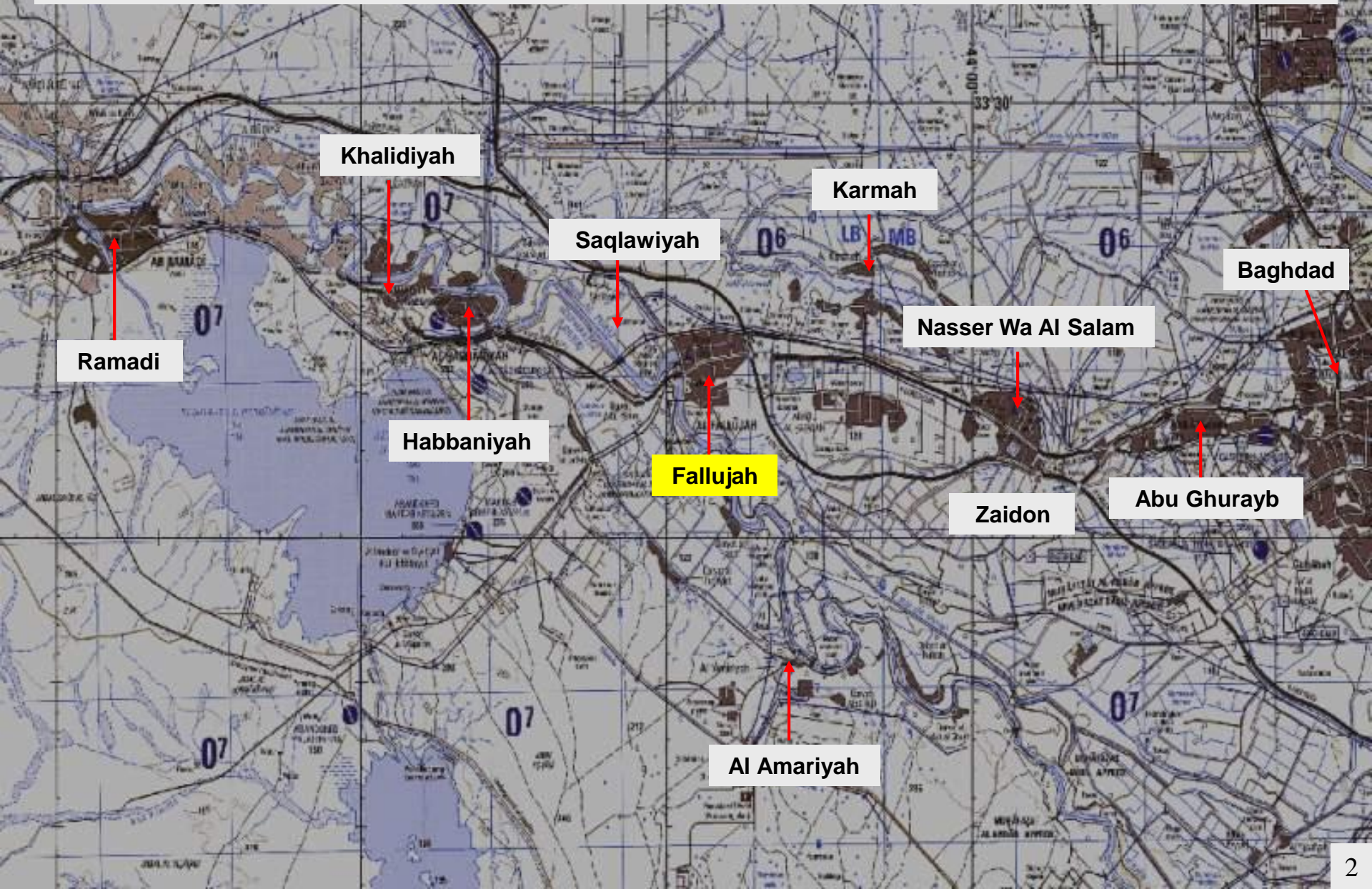


OPERATION AL FAJR

THE BATTLE FOR FALLUJAH

FALLUJAH AND SURROUNDING CITIES





FALLUJAH OVERVIEW

■ SIGNIFICANCE

- Anti-Iraqi Force (AIF) Control
- AIF Safe-haven & closed city
 - No Iraqi Security Forces(ISF) or Coalition Forces (CF)
- Key city on line of communication to Baghdad
- Key city on line of communication to Ramadi (Provincial Capital)

■ POPULATION (Approx 239,000)

- Former Regime Element/Sunni dominated
- Unemployment – Assessed as High

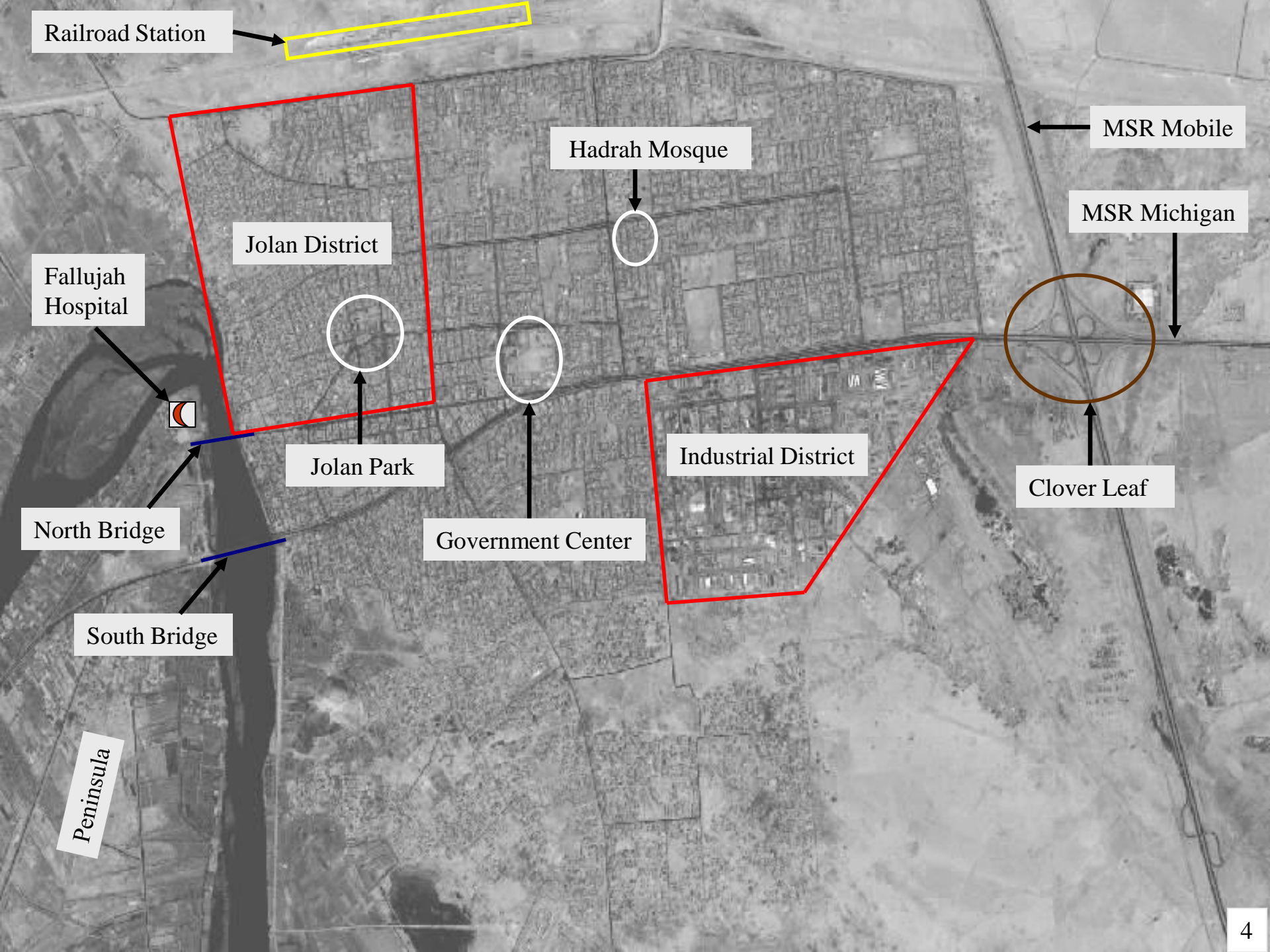
■ ESSENTIAL SERVICES (Percent Accessible)

- Water 70%
- Power 70% (9 – 15 hrs per day)
- Fuel 60%
- Medical 55%
- Public Safety 15%
- Previous Industries – Cement, Metal, Glass, Grain Storage

■ CITY LEADERSHIP

- Mayor – Weak willed, mixed loyalties
- City Council – Run by Sheik Janabi (Anti CF)
- ING – Weak, Commander/S-2 recently assassinated
- IPs – No credible or capable Iraqi Police





Railroad Station

MSR Mobile

MSR Michigan

Fallujah Hospital

Jolan District

Hadrah Mosque

North Bridge

Jolan Park

Government Center

Industrial District

Clover Leaf

South Bridge

Peninsula



BACKGROUND

- **AMBUSH OF “BLACKWATER” CONTRACTORS**
 - 31 MARCH ‘04
- **CORDON ESTABLISHED AROUND FALLUJAH**
- **OPERATION *VIGILANT RESOLVE* COMMENCES**
 - 7 APRIL ‘04
- **1ST MARDIV CEASES OFFENSIVE OPERATIONS IN FALLUJAH**
 - 30 APRIL ‘04
- **FALLUJAH BRIGADE STANDS UP**





THE ENEMY

- **FALLUJAH BECOMES AN INSURGENT SANCTUARY**

- **FORMER REGIME ELEMENTS (FRE)**

- **DISENFRANCHISED BA'ATHISTS**
- **NEVER ATTAINED SAME INFLUENCE UNDER IRAQI INTERIM GOV'T (IIG)**

- **ISLAMIC EXTREMISTS (LOCAL, FOREIGN, AND MIXED)**

- **LOCALS WHO SOUGHT AN ISLAMIC IRAQI STATE BASED ON SHARI'A LAW**
- **FOREIGN FIGHTERS & LOCALS SOUGHT BREEDING GROUND TO EXPORT JIHAD**

- **TRIBES**

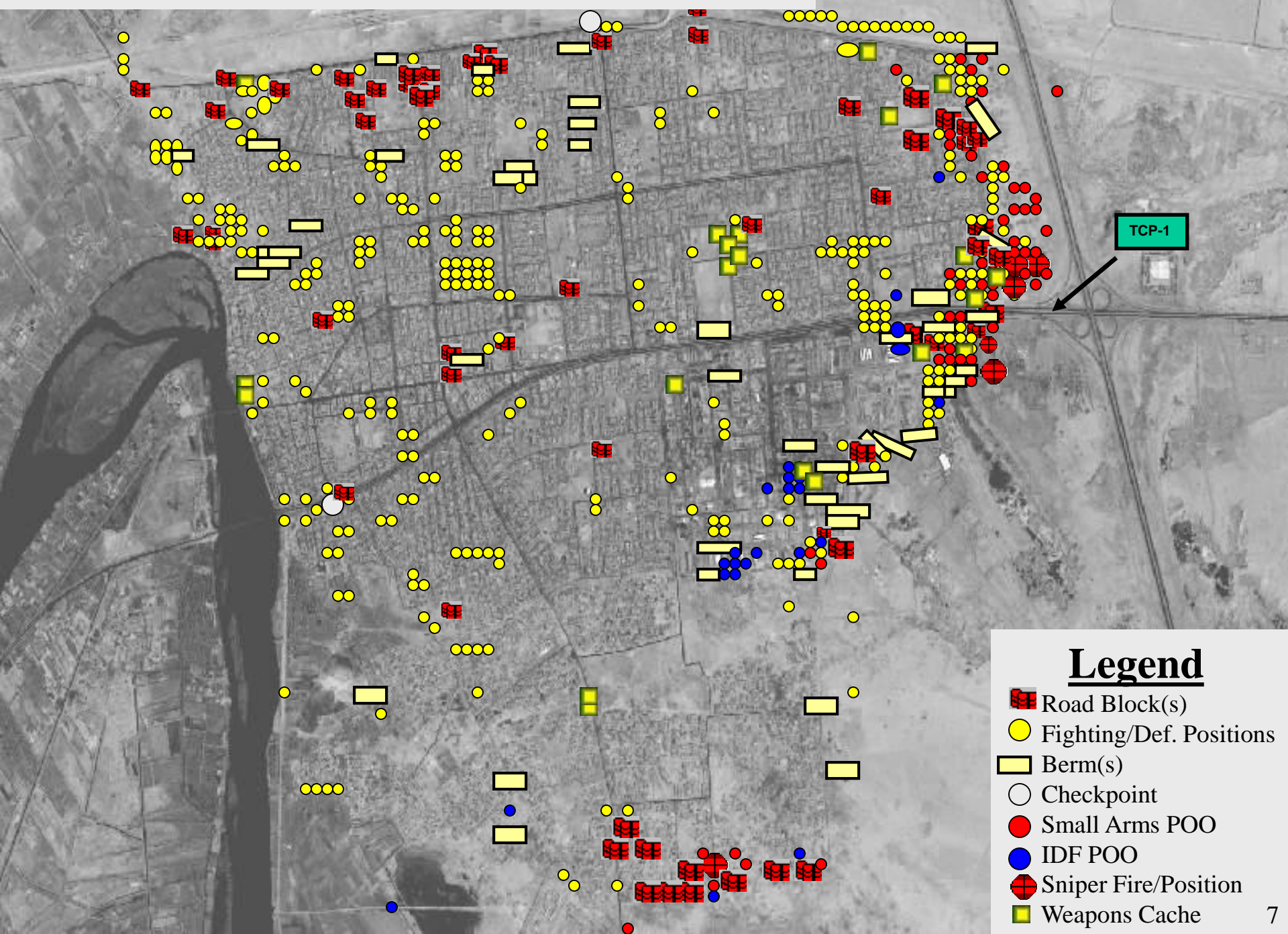
- **SOUGHT TO REGAIN POWER AND WEALTH**

- **CRIMINALS**

- **INVOLVED IN ALL THREE PREVIOUS GROUPS FOR PERSONAL GAIN**











FALLUJAH THREAT OVERVIEW (OCTOBER 2004)



TCP-1

Legend

-  Road Block(s)
-  Fighting/Def. Positions
-  Berm(s)
-  Checkpoint
-  Small Arms POO
-  IDF POO
-  Sniper Fire/Position
-  Weapons Cache



ENEMY TACTICS

- **DAISY CHAINED IEDs**
- **VBIEDs**
- **SUICIDE BOMBERS**
- **BOOBY-TRAPPED**
 - **BUILDINGS**
 - **CACHES**
 - **INSURGENTS**
- **USE OF PROTECTED SITES (e.g. Mosques)**
- **DEFENSIVE BELTS**
- **HIT AND FALL BACK**
- **TUNNEL SYSTEMS**
- **INDIRECT FIRE**
- **WEAPONS CACHES**
- **SNIPERS**
- **FALSE SURRENDER**
- **DRUG USE**
- **VOICE RECORDINGS**
 - **WOMEN CRYING OUT FOR HELP**
- **WEARING OF ISF UNIFORMS**



MISSION

**AT H HOUR ON D+1, 1ST MARINE
DIVISION (-)(REIN) ATTACKS TO
DESTROY ANTI-IRAQI FORCES IN
FALLUJAH IN ORDER TO ESTABLISH
LEGITIMATE LOCAL CONTROL**





COMMANDER'S INTENT

- **ELIMINATE INSURGENT SANCTUARY**
- **SET THE CONDITIONS FOR LOCAL CONTROL IN CITY**
- **SUPPORT THE MULTI-NATIONAL FORCE IRAQ (MNF-I) EFFORT TO SECURE APPROACHES TO BAGHDAD**





METHOD

- **SHAPING:**
 1. **DESTROY/DISRUPT AIF C²**
 2. **ATTRITE INSURGENTS**
 3. **DRIVE A WEDGE BETWEEN INSURGENTS & FALLUJAH RESIDENTS**
- **CLOSE BORDER POINTS OF ENTRY**
- **RAPIDLY ASSAULT TO PENETRATE AND DESTROY AIF**
 1. **UTILIZE STRENGTHS OF JOINT/COALITION FORCES**
 2. **COMBINED ARMS**
 3. **PROGRESSION OF FORCE TO REDUCE COLLATERAL DAMAGE**
- **CONTINUE ENDURING TASKS IN DIVISION AO**
- **ASSAULT FOLLOWED BY ROBUST CA EFFORTS**



ENDSTATE

- **INSURGENTS IN FALLUJAH DESTROYED/SANCTUARY ELIMINATED**
- **IRAQI SECURITY FORCES/IRAQI INTERIM GOVERNMENT IN CONTROL OF FALLUJAH**
- **DIVISION PREPARED FOR FOLLOW-ON OPERATIONS**



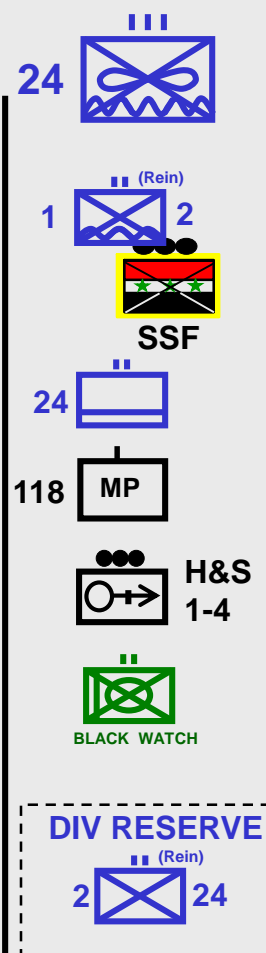


Fallujah Environs

Ramadi

Western AO

N. Babil

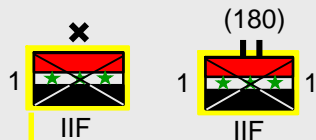
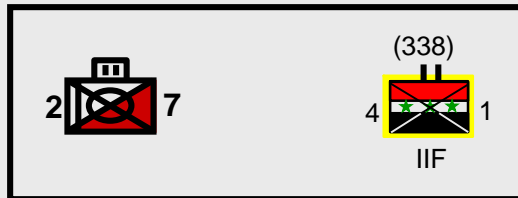
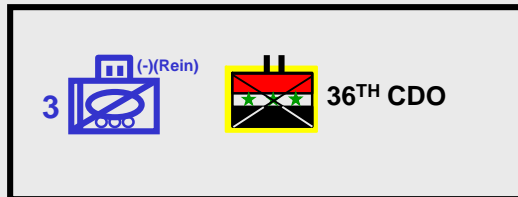
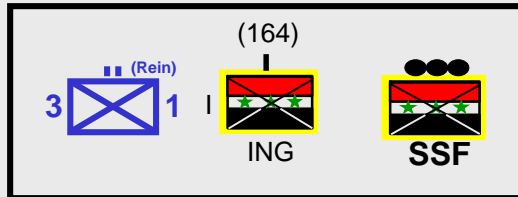
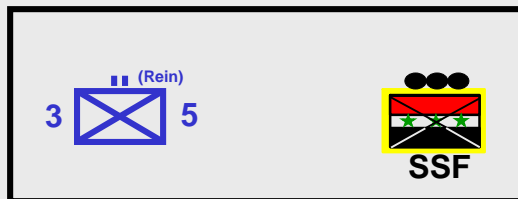




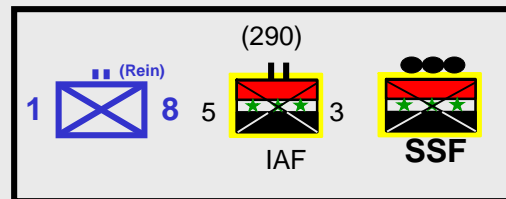
IRAQI SECURITY FORCES

1ST MARDIV

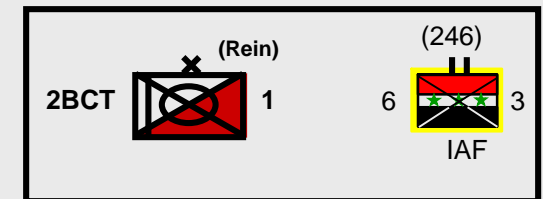
RCT-1



RCT-7



BLACK JACK BDE





PHASES

I – PREPARATION/SHAPING

II – ENHANCED SHAPING

IIIA – ASSAULT

IIIB – SEARCH AND ATTACK

IV – TRANSITION

V – TRANSFER OF CONTROL





PHASE I (PREPARATION)

- **OPERATIONAL PLANNING**
- **ROC DRILLS/REHEARSAL**
- **MOVEMENT OF FORCES, RIP/ BATTLE HANDOVERS CONDUCTED WITHIN THE DIVISION AO**
- **INTEGRATION AND TRAINING OF IRAQI SECURITY FORCES**
- **INTEGRATION OF U.S. ARMY UNITS**
- **BLACK WATCH TO NORTH BABIL**

- SET CONDITIONS FOR SUCCESS -



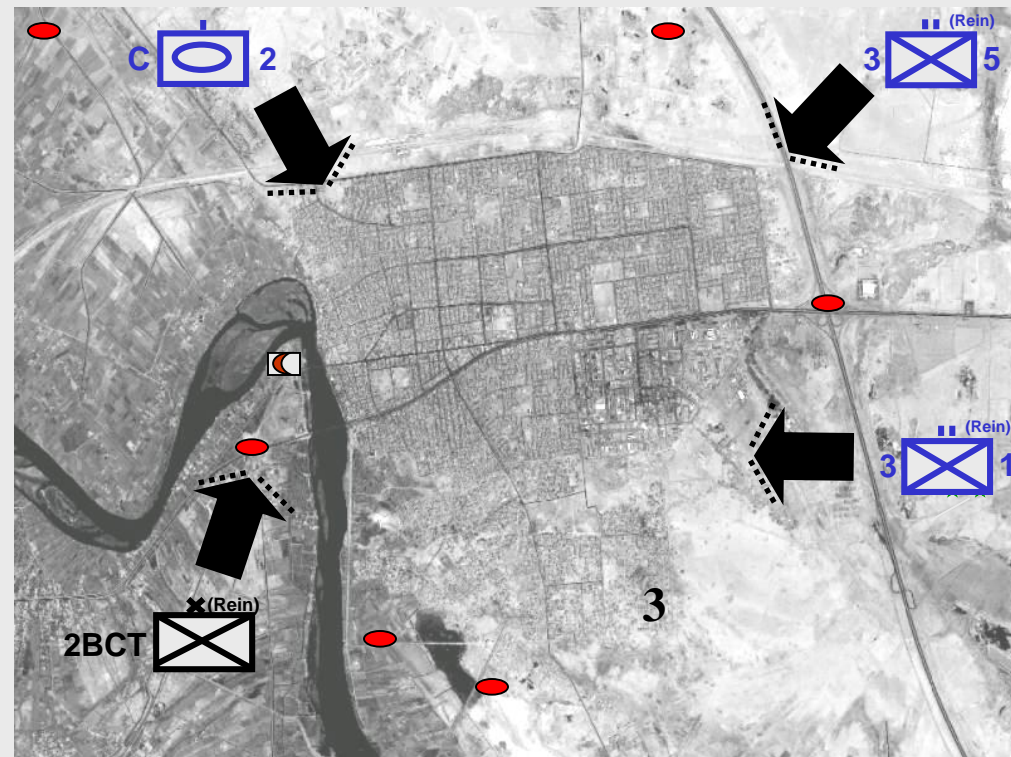


PHASE I (SHAPING)

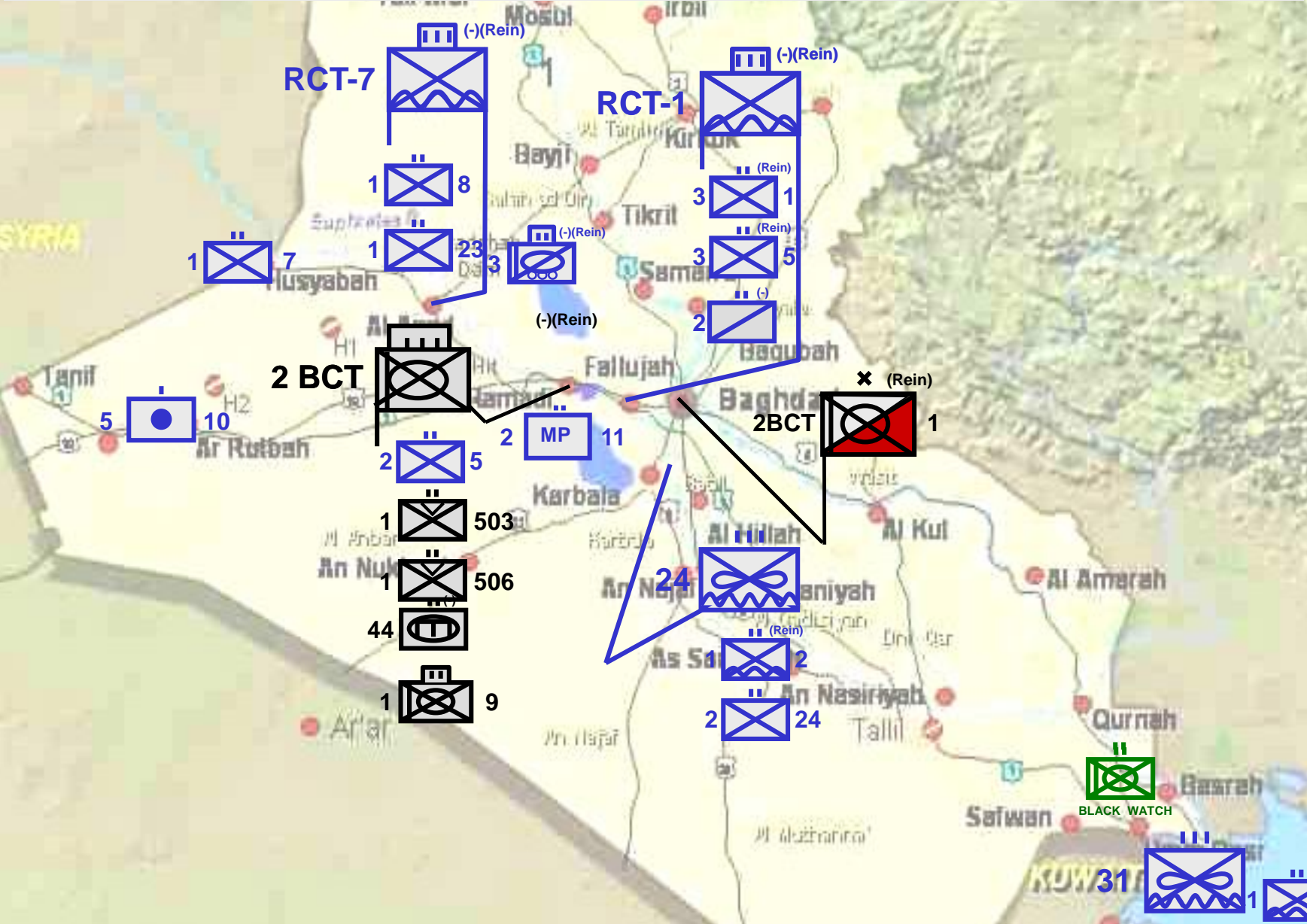
- FEINTS
- RAIDS
- CORDON AND SEARCHES
- VEHICLE CHECKPOINTS (VCPS)
- INDIRECT FIRES AND CAS
- INFORMATION OPS AND PSYOPS
- TARGETING OF AIF LEADERSHIP
- SPECIAL OPERATION FORCES
- TARGETING OF HIGH-VALUE TARGETS

DESIRED ENEMY ENDSTATE

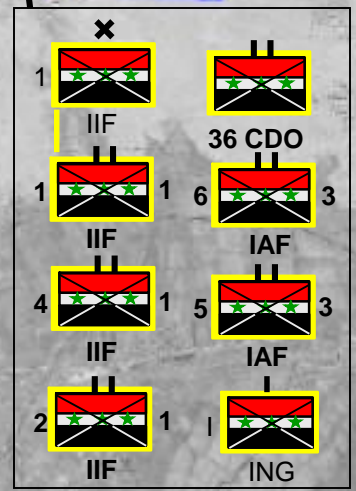
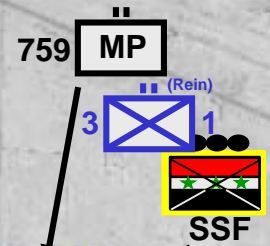
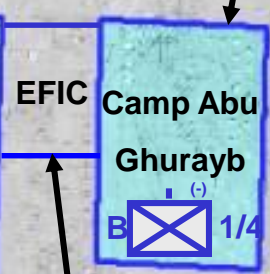
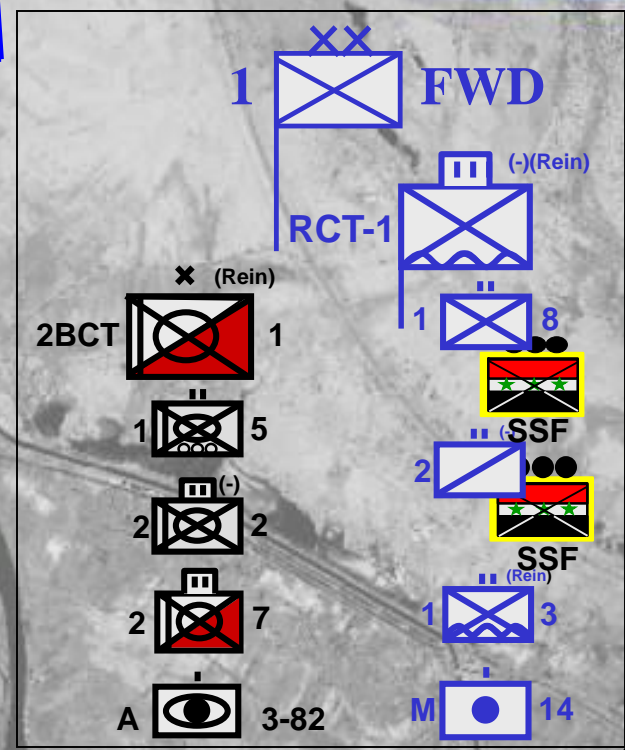
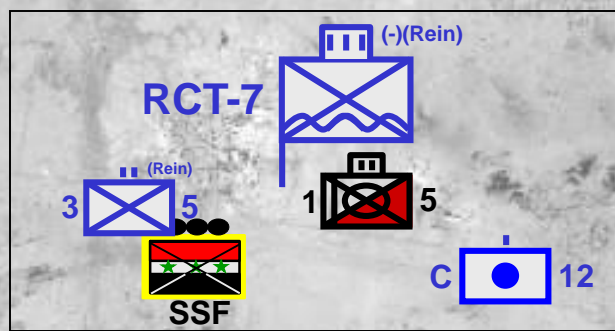
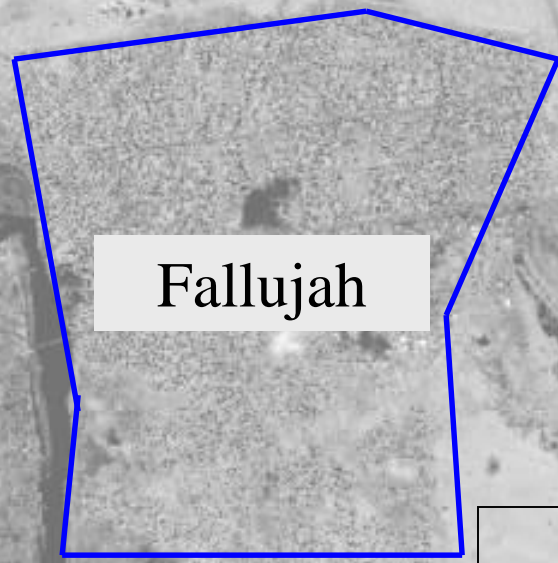
- CONFUSED AS TO MNF INTENTIONS
- WEDGE DRIVEN BETWEEN POPULACE AND AIF
- C² NODES EXPOSED AND DESTROYED
- DEFENSES IDENTIFIED
- HEIGHTENED STATE OF PARANOIA AND ANXIETY



PRE-BATTLE DIVISION LAYDOWN



PHASE I FORCE LAYDOWN



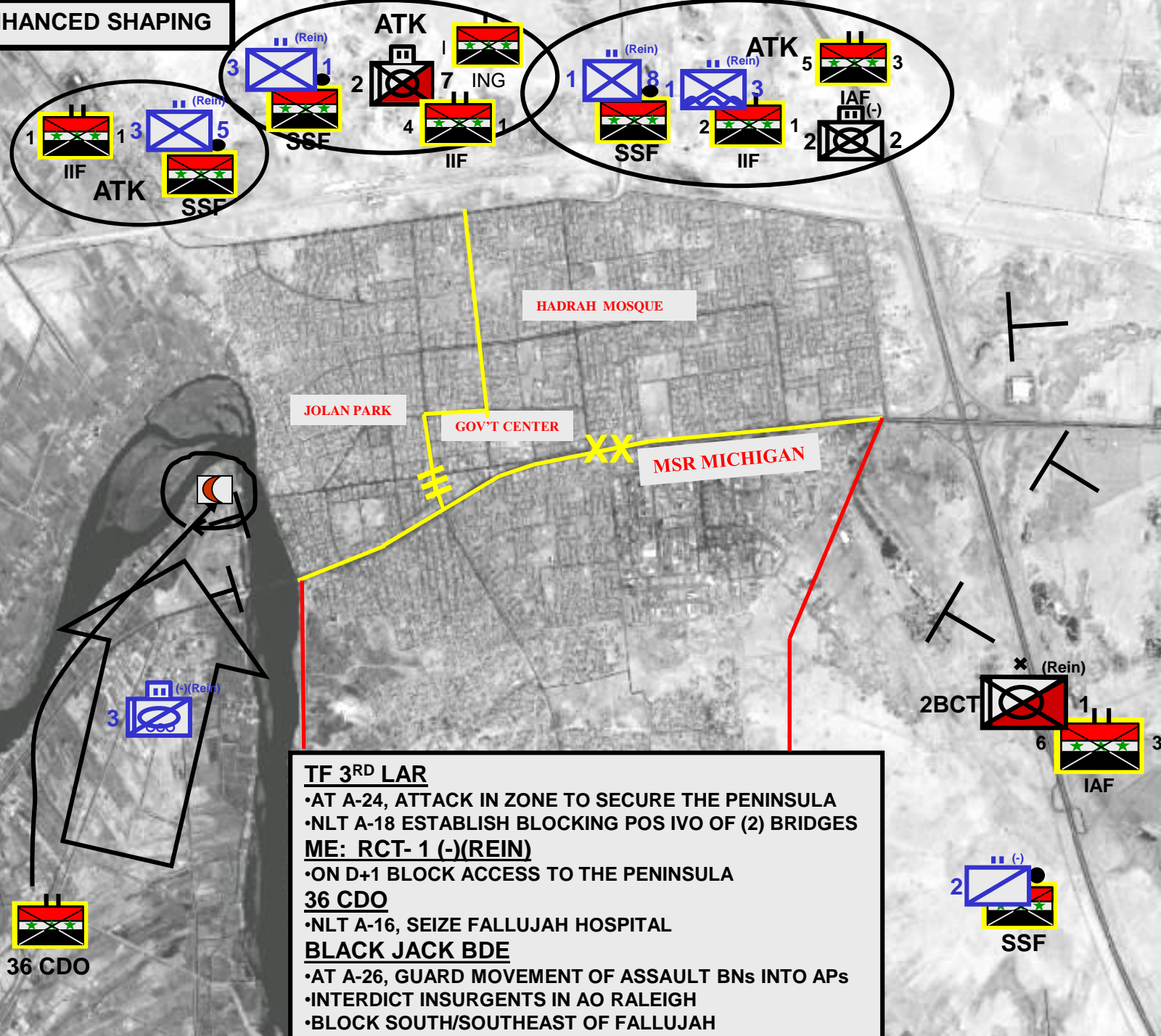


PHASE II D-DAY (ENHANCED SHAPING)

- **ELECTRONIC ATTACK**
- **ISOLATION OF FALLUJAH BY BLACK JACK BRIGADE**
- **JOINT FIRES**
- **MOVEMENT OF FORCES INTO ATTACK POSITIONS**
- **PENINSULA ASSAULT**
- **FALLUJAH HOSPITAL SECURED**
- **BRIDGES SECURED/BLOCKING POSITIONS ESTABLISHED AROUND FALLUJAH**
- **INTEGRATION OF JOINT SPECIAL OPERATION TASK FORCE SNIPERS INTO ASSAULT FORCES**



PHASE II ENHANCED SHAPING



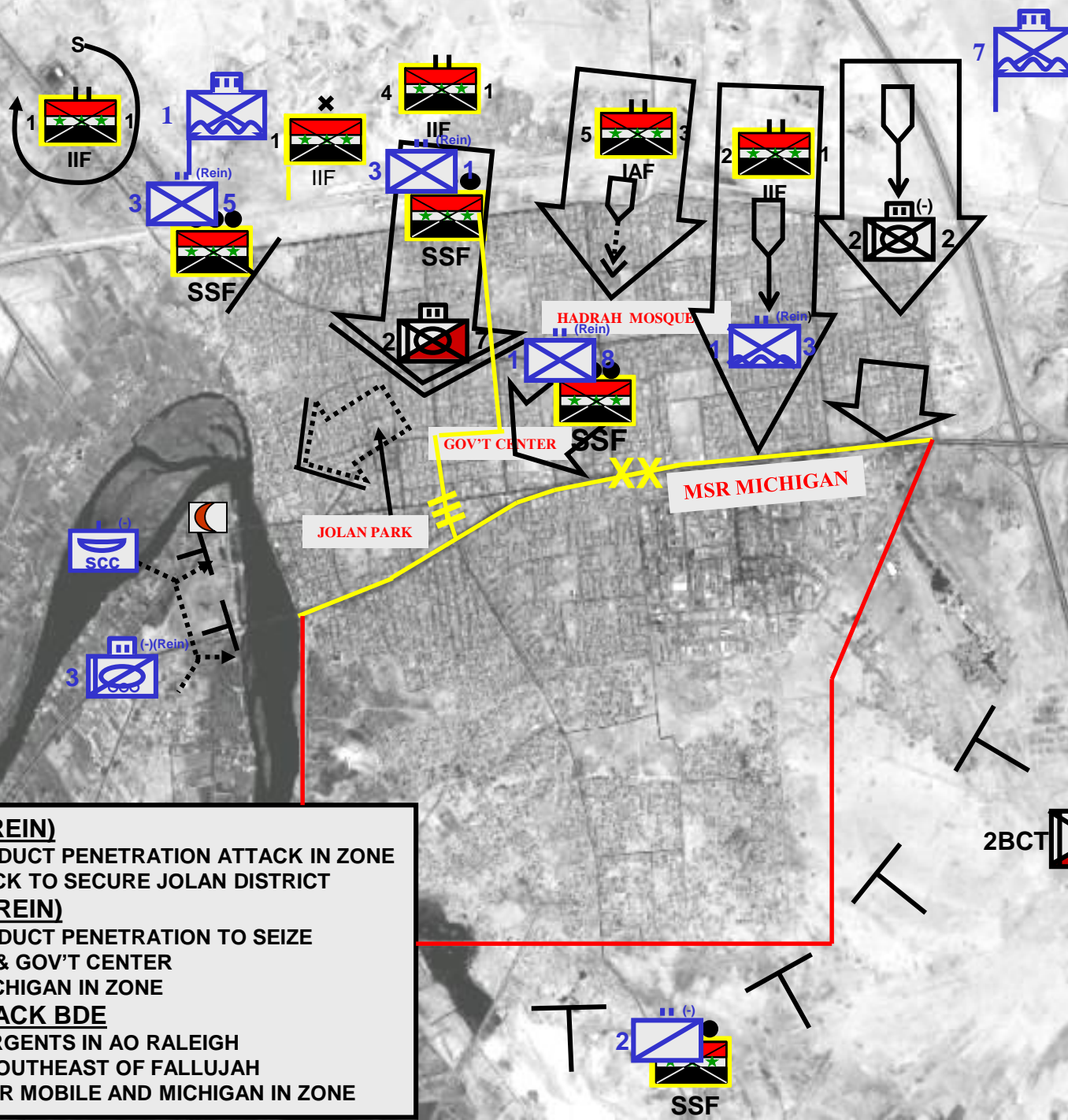


PHASE III D+1 (ASSAULT)

- **RAPID PENETRATION INTO CITY**
 - **EXPLOIT SHOCK, FIREPOWER, AND MOBILITY OF ARMORED FORCES**
 - **COMBINED ARMS ATTACK**
 - **ARMY/MARINE ARTILLERY**
 - **JOINT CAS**
 - **COORDINATED FIRES IN FALLUJAH KILL BOX**
- **SEARCH AND ATTACK IN ZONE**
- **BLACK JACK BRIGADE CONTINUES TO ISOLATE FALLUJAH AND PROTECT DIVISION REAR AREA**
- **INTELLIGENCE EXPLOITATION/IO MESSAGE**



PHASE III-A



ME: RCT 1 (-)(REIN)

- AT A-HOUR, CONDUCT PENETRATION ATTACK IN ZONE
- CONTINUE ATTACK TO SECURE JOLAN DISTRICT

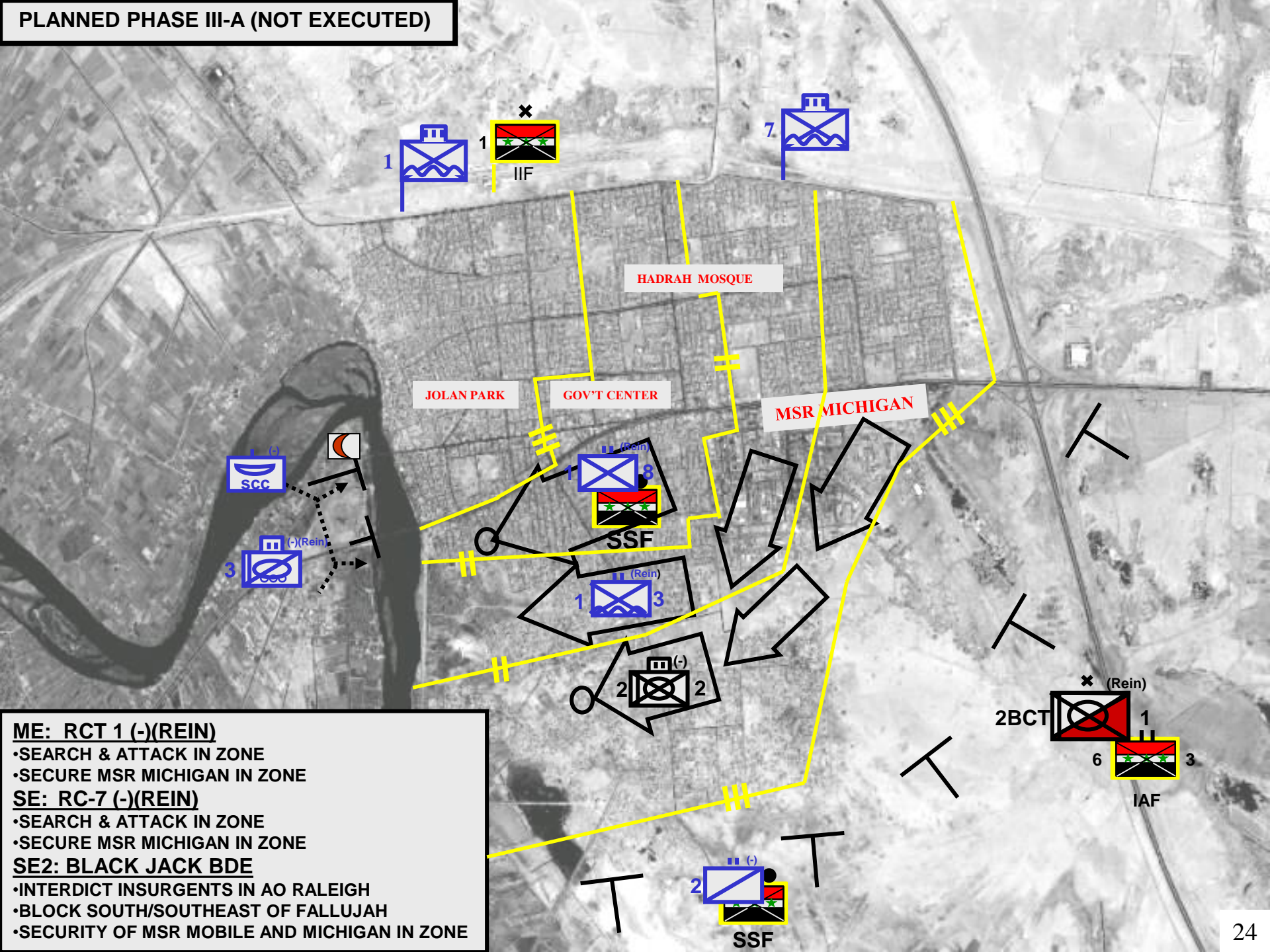
SE1: RCT-7 (-)(REIN)

- AT A-HOUR, CONDUCT PENETRATION TO SEIZE HADRA MOSQUE & GOV'T CENTER
- SECURE MSR MICHIGAN IN ZONE

SE2: BLACK JACK BDE

- INTERDICTION INSURGENTS IN AO RALEIGH
- BLOCK SOUTH/SOUTHEAST OF FALLUJAH
- SECURITY OF MSR MOBILE AND MICHIGAN IN ZONE

PLANNED PHASE III-A (NOT EXECUTED)



ME: RCT 1 (-)(REIN)

- SEARCH & ATTACK IN ZONE
- SECURE MSR MICHIGAN IN ZONE

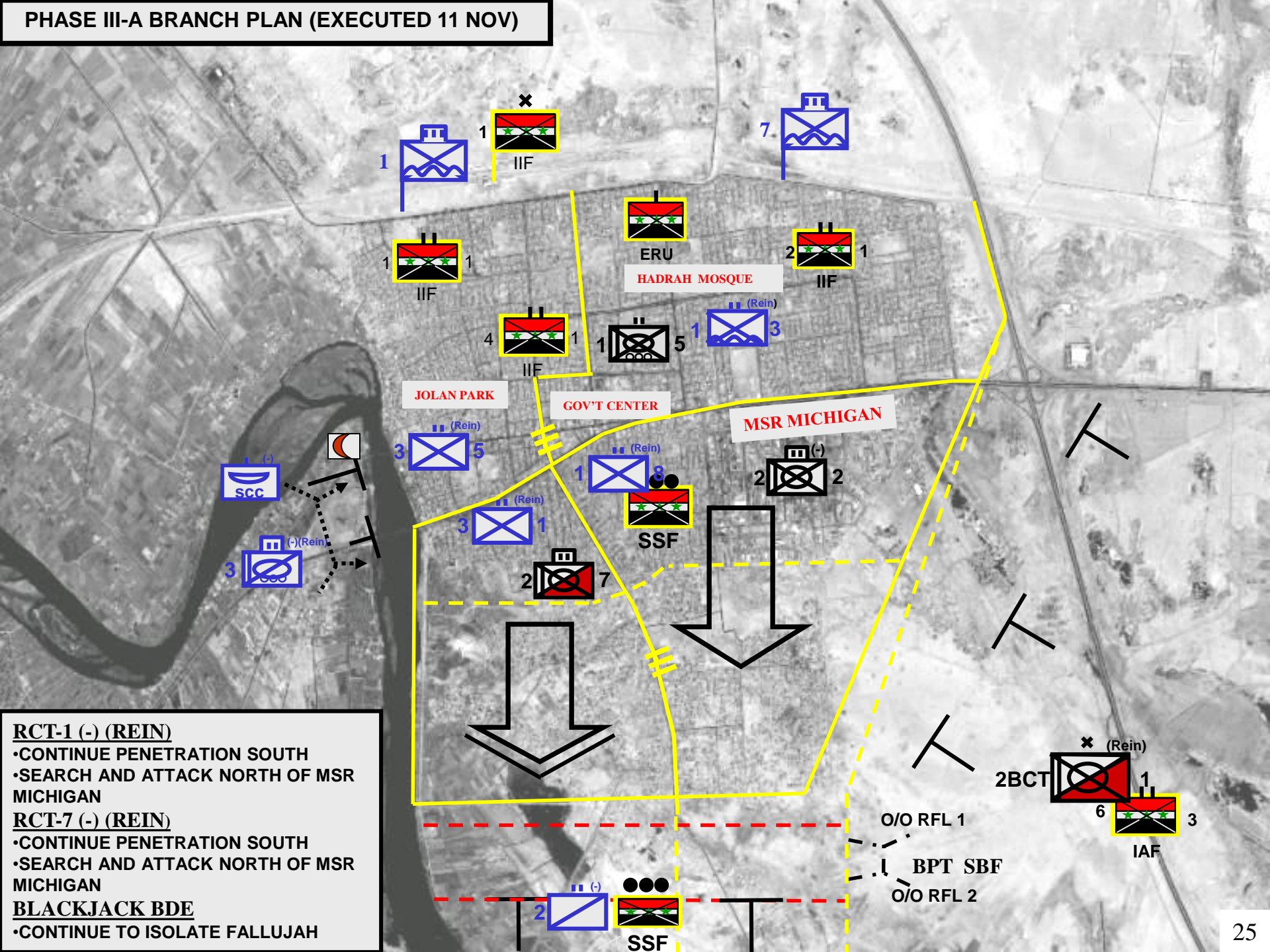
SE: RC-7 (-)(REIN)

- SEARCH & ATTACK IN ZONE
- SECURE MSR MICHIGAN IN ZONE

SE2: BLACK JACK BDE

- INTERDICT INSURGENTS IN AO RALEIGH
- BLOCK SOUTH/SOUTHEAST OF FALLUJAH
- SECURITY OF MSR MOBILE AND MICHIGAN IN ZONE

PHASE III-A BRANCH PLAN (EXECUTED 11 NOV)



RCT-1 (-) (REIN)

- CONTINUE PENETRATION SOUTH
- SEARCH AND ATTACK NORTH OF MSR MICHIGAN

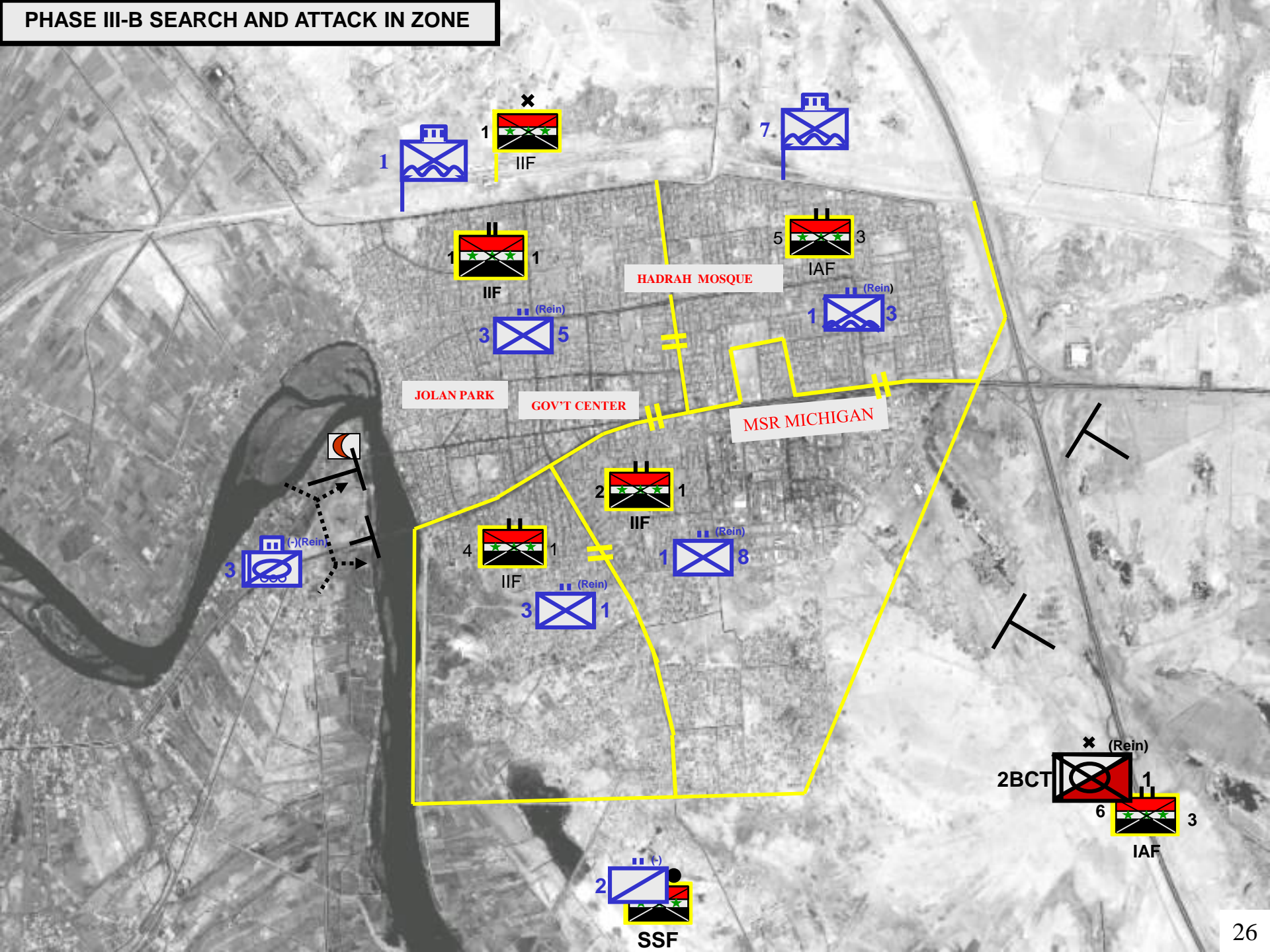
RCT-7 (-) (REIN)

- CONTINUE PENETRATION SOUTH
- SEARCH AND ATTACK NORTH OF MSR MICHIGAN

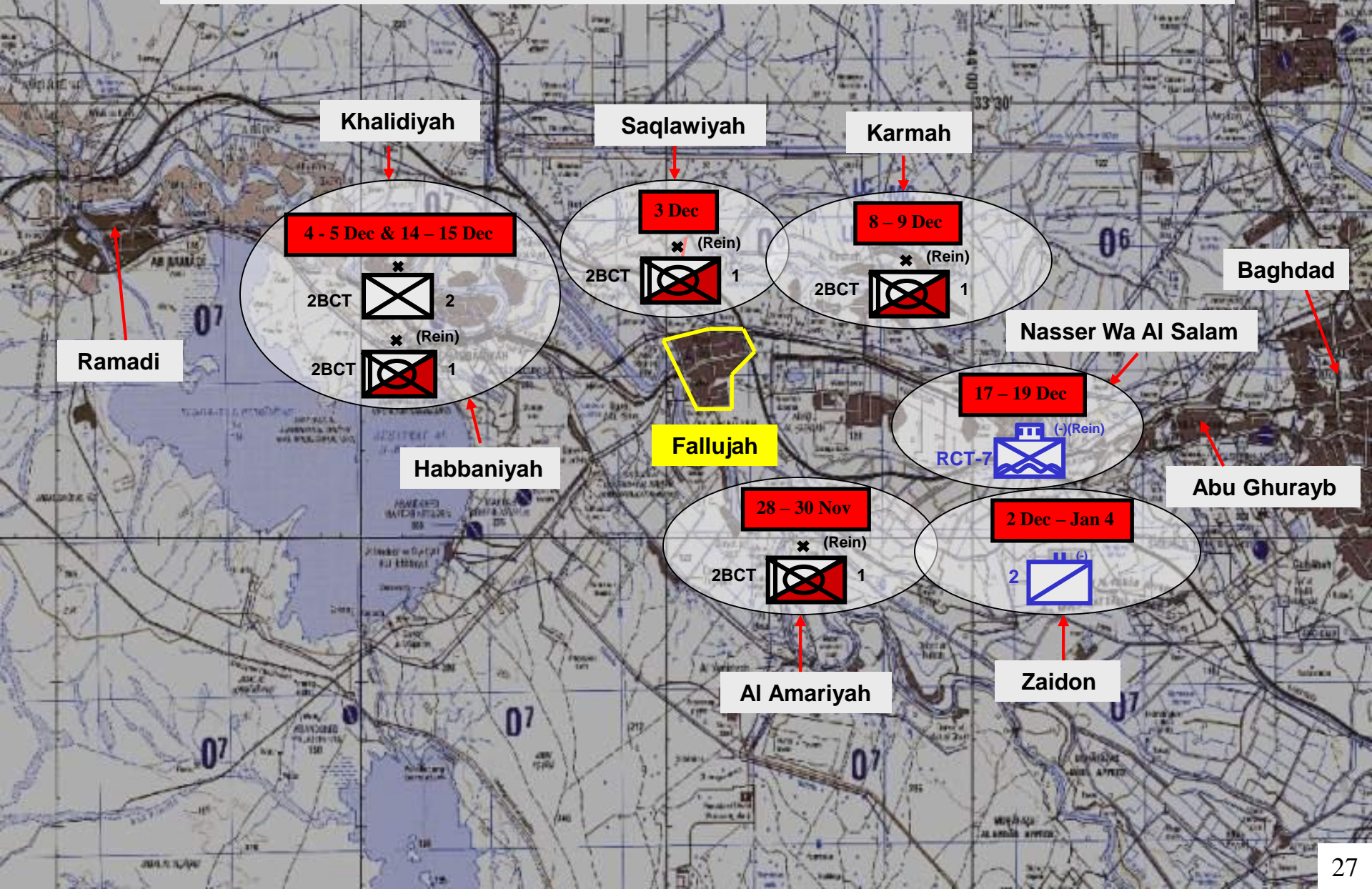
BLACKJACK BDE

- CONTINUE TO ISOLATE FALLUJAH

PHASE III-B SEARCH AND ATTACK IN ZONE

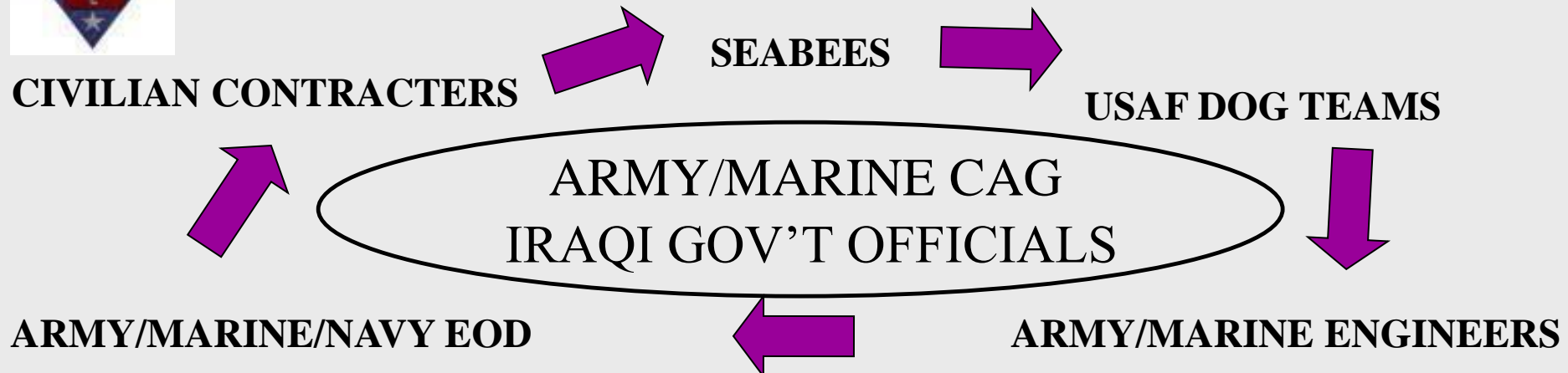


PURSUIT AND EXPLOITATION





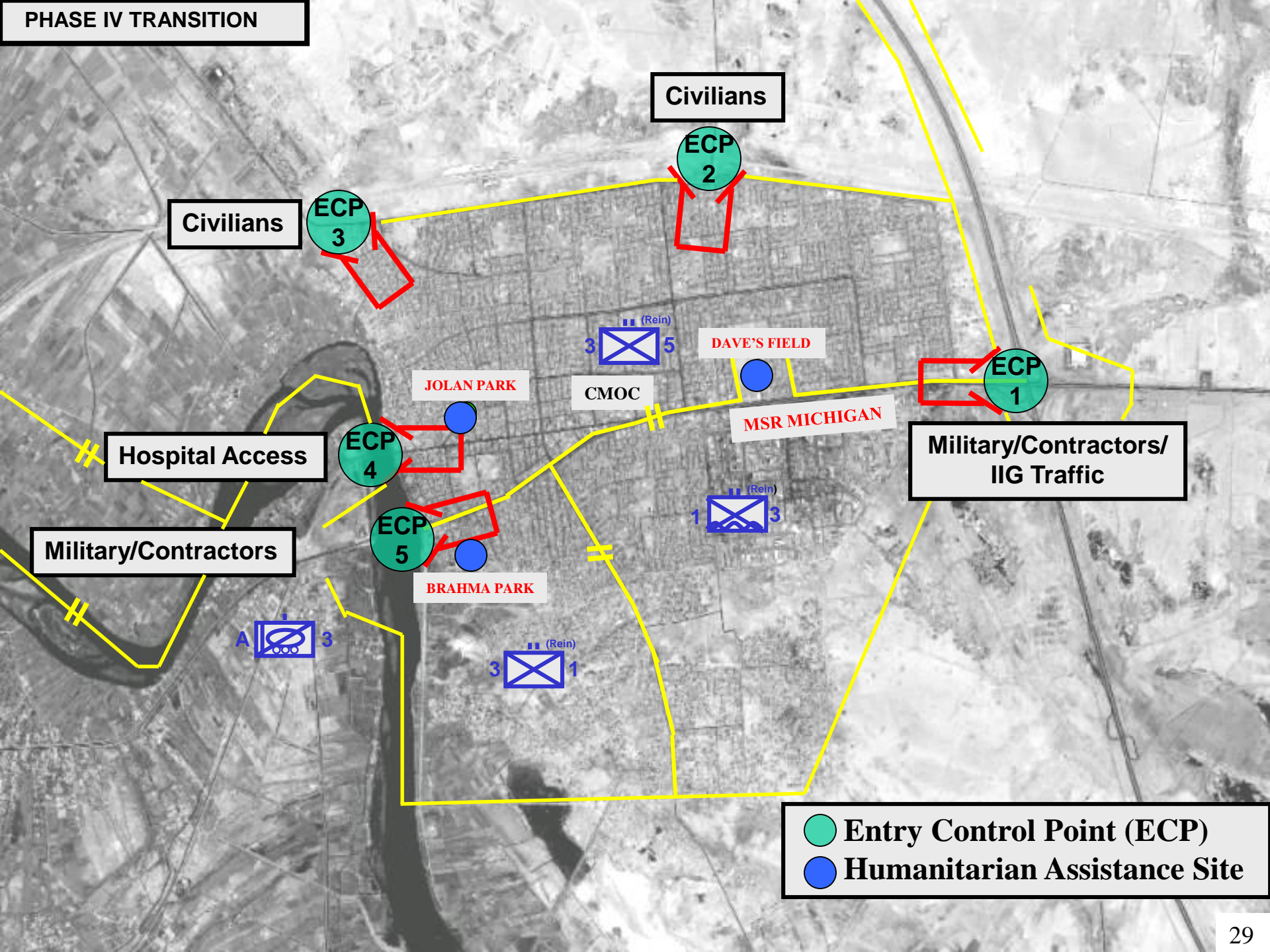
PHASE III INTO PHASE IV



- | | |
|---|---|
| <ul style="list-style-type: none">• REMAINS REMOVAL• FOOD DISTRIBUTION• ESTABLISH CMOC• UNEXPLODED ORDNANCE & CACHE CLEARANCE• WATER REMOVAL | <ul style="list-style-type: none">• CONTINUE CLEARING OPERATIONS• SANITATION IMPROVEMENTS• ELECTRICAL GRID REPAIRS• PEST CONTROL• RUBBLE REMOVAL• ENTRY CONTROL POINTS ESTABLISHED |
|---|---|



PHASE IV TRANSITION

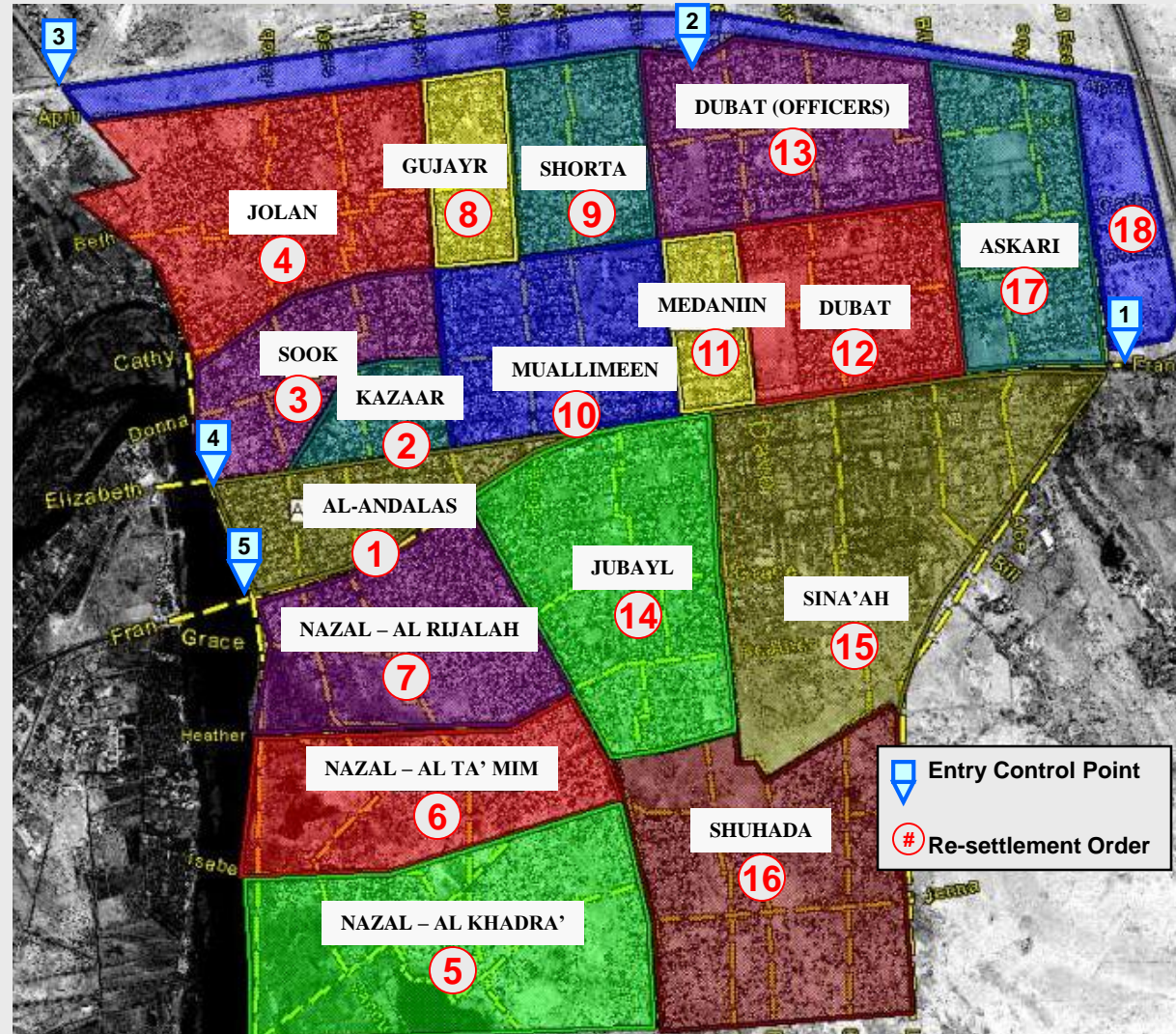


- Entry Control Point (ECP)
- Humanitarian Assistance Site



POPULATION RESETTLEMENT

- **PHASED**
 - LINKED TO HUMANITARIAN RESOURCES & SECURITY
 - SUPPORT FROM INTERIM IRAQI GOVERNMENT
- CIVIL AFFAIRS RE-ESTABLISHES BASIC NEEDS FOR RETURNING CITIZENS
- ISF AND MNF PROVIDE SECURITY & HUMANITARIAN ASSISTANCE
- RESTORATION OF BASIC SERVICES



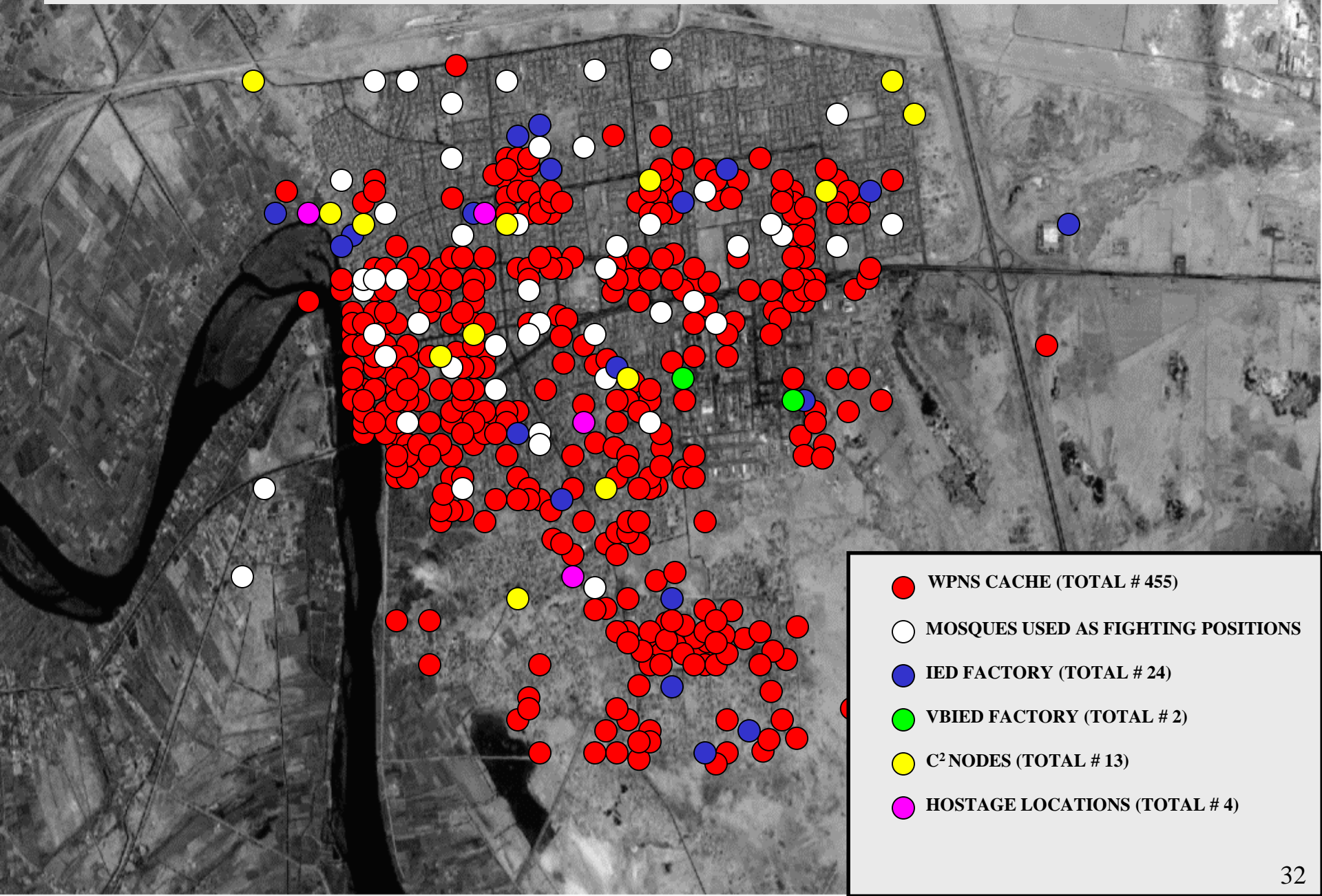


ISF IN FALLUJAH

- **FOUGHT ALONGSIDE MARINES AND SOLDIERS**
 - **CLEARED ASSIGNED BATTLESPACE**
 - **ATTACKED AND SEIZED SENSITIVE TARGETS**
 - **MOSQUES**
 - **GOVERNMENT CENTER**
 - **IDENTIFIED FOREIGN FIGHTERS**
 - **GATHERED INTELLIGENCE**
 - **PROVIDED HUMANITARIAN ASSISTANCE**
 - **ASSISTED REFUGEE RESETTLEMENT**
 - **SECURED FIXED SITES**
 - **CONDUCTED JOINT SECURITY PATROLS**
 - **REDUCED CACHE**



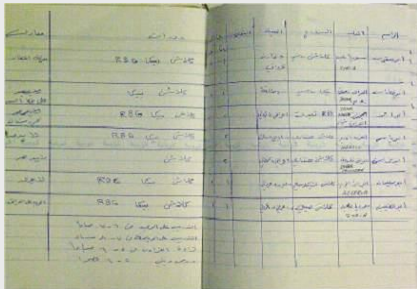
1ST MARDIV DISCOVERIES IN FALLUJAH



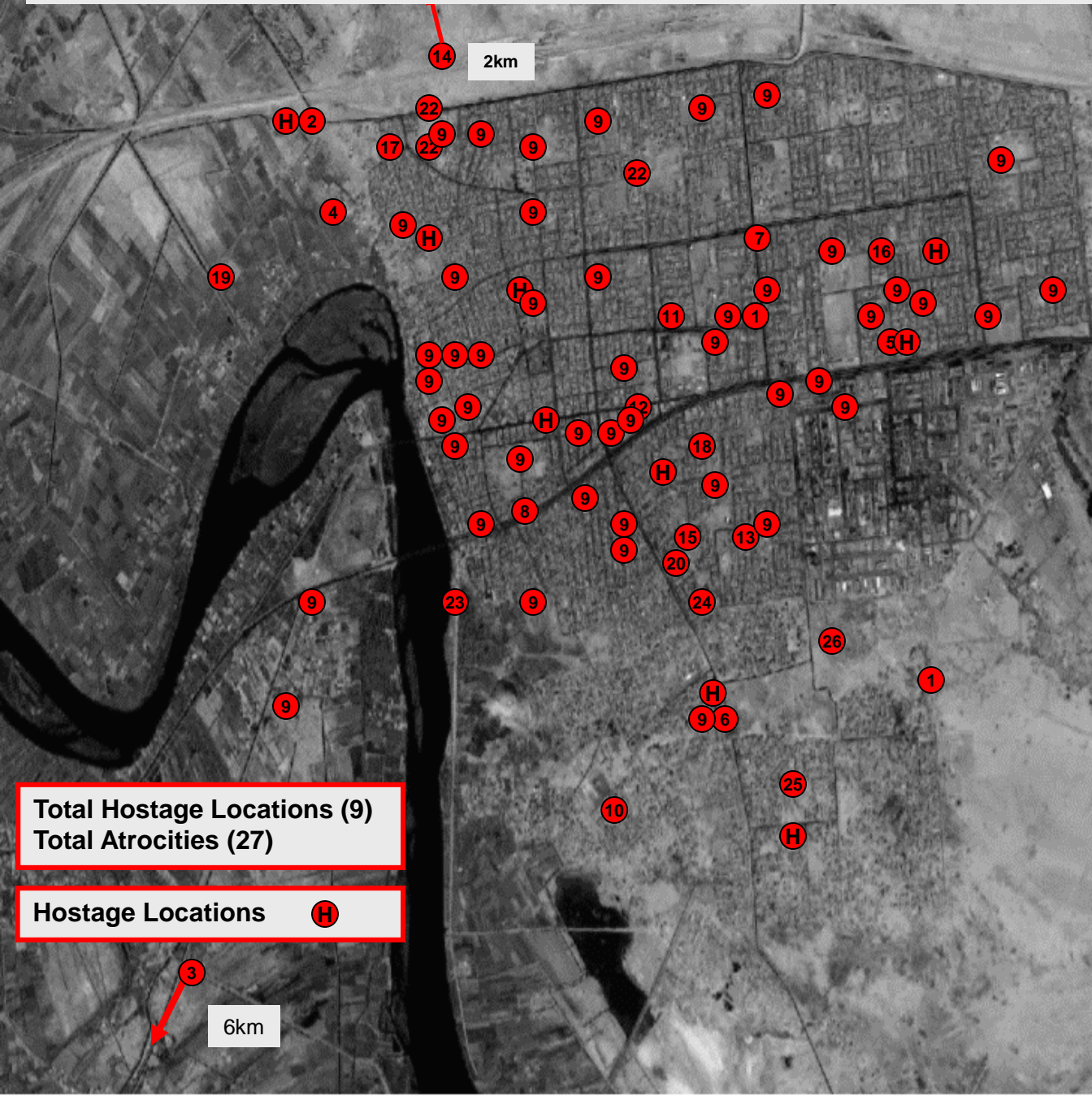


INTELLIGENCE WINDFALLS IN FALLUJAH

- **IED, EXPLOSIVE, AND CHEMICAL AGENT MAKING MANUALS**
- **INSURGENT TTP MANUALS**
- **“MARTYRED” INSURGENT LEDGERS**
- **INSURGENT PASSPORTS AND IDS (ORIGINAL AND FORGED)**
- **PROPAGANDA MANUFACTURING EQUIPMENT**
- **LEDGERS WITH ILLEGAL ARMS TRANSACTIONS**
- **FOREIGN FIGHTER INFILTRATION ROUTES**
- **TERRORIST TRAINING FACILITIES**
- **DIVERSE ENEMY WEAPON SYSTEMS**
- **TECHNOLOGIES (NVGS/BODY ARMOR)**



ENEMY VIOLATIONS OF THE LAW OF ARMED CONFLICT



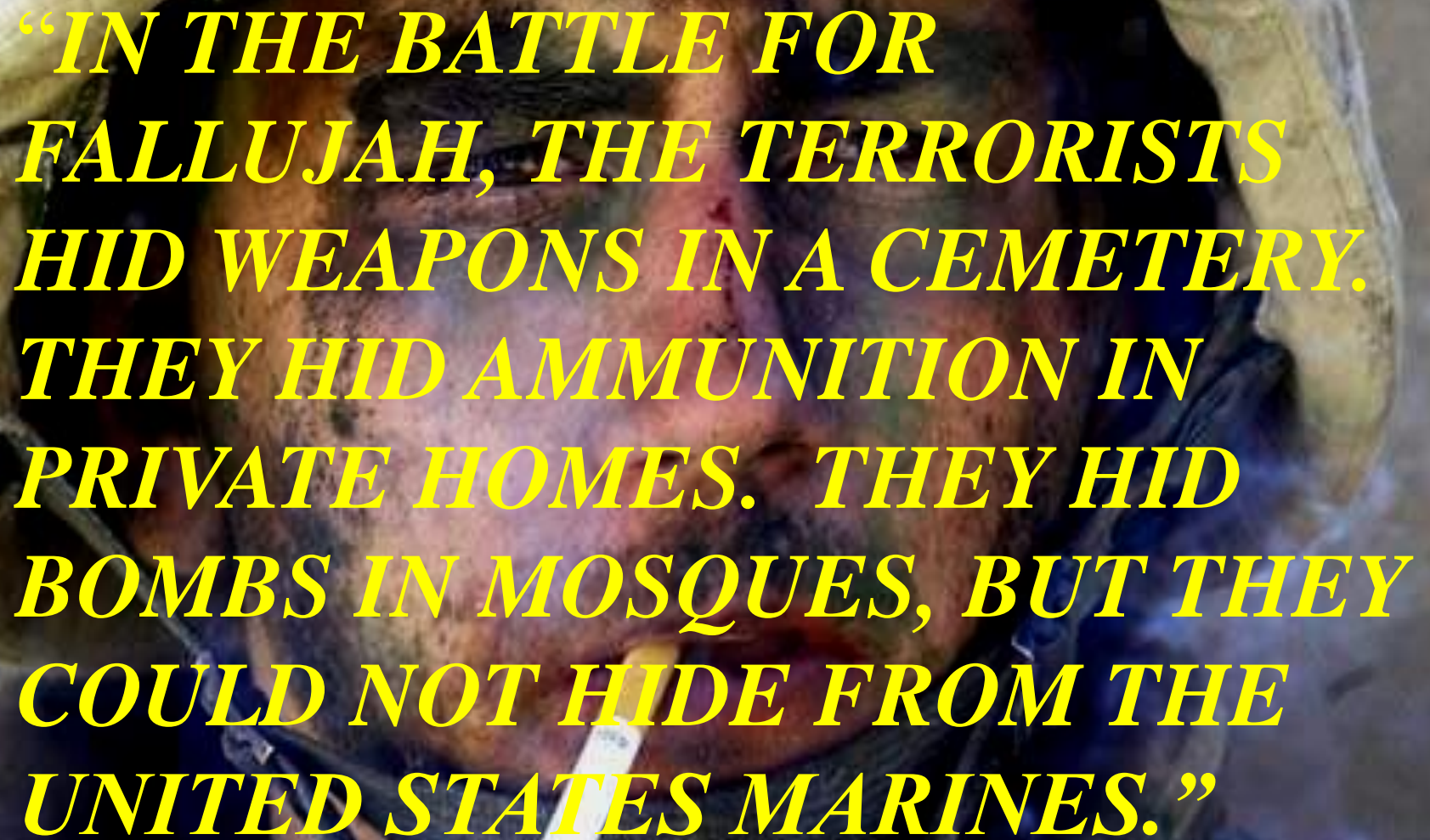
Event:

1. Human Corpse IED
2. Hostage found chained to wall severely mistreated
3. SVBIED attack on MedEvac
4. IDF attack on Hospital
5. Released hostage told to kill self
6. Mosque broadcast telling civilians to leave homes
7. Sniper incident during HA
8. Mutilated body of woman found
9. Mosque used as fighting position
10. Video equipment exploited
11. Blackwater contractor's ID found
12. Incident of insurgent killing civilians
13. Insurgent fakes surrender
14. SAF on ambulance
15. Recording of female in distress used to lure MNF
16. Insurgents use school to attack MNF
17. Insurgents using Red Crescent ambulances
18. Suspected hostage holding facility
19. 5 Iraqi males found summarily executed
20. Suicide vests worn by insurgents as new TTP
21. New TTP, Insurgents pretend they are dead
22. Fighting in cemeteries
23. Body found was booby trapped with grenades
24. Insurgents use CS gas on MNF
25. Chemical lab found
26. Chemical lab found
27. New TTP- Grenades found inside dead bodies and pin is attached to clothes



LESSONS LEARNED

- **ATTACH UNITS (JOINT/COMBINED) AS EARLY AS POSSIBLE FOR PLANNING/INTEGRATION**
- **ARMOR/INFANTRY REMAIN COMPLIMENTARY FORCE IN URBAN ENVIRONMENT**
- **RAPID PENETRATIONS EXPLOITED OUR SUPERIOR FIREPOWER, ARMOR PROTECTION, AND C² ADVANTAGES, WHILE DISRUPTING ENEMY C²**
- **PSYOPS/IO/SIGINT KEY TO SHAPING THE BATTLEFIELD**
- **MANEUVER AND KINETIC STRIKES CONDUCTED TO SUPPORT INTELLIGENCE COLLECTION**
- **COMMANDERS NEED TO BE FORWARD TO ENSURE SITUATIONAL AWARENESS AND TIMELY DECISION MAKING**
- **ALL MARINE, ARMY, AND IRAQI UNITS MUST BE ASSIMILATED INTO A COMMON COMMUNICATIONS PLAN**
- **DOCTRINALLY SOUND C² AND FIRES ARCHITECTURE OVERCAME T/O SHORTFALLS**
- **PRECISION MUNITIONS CRITICAL IN LIMITING COLLATERAL DAMAGE/FRATRICIDE**
- **ISR PLATFORMS ESSENTIAL FOR TARGETING**
- **DOCTRINE WORKS - TACTICAL/OPERATIONAL TERMINOLOGY UNDERSTOOD BY ALL**



***“IN THE BATTLE FOR
FALLUJAH, THE TERRORISTS
HID WEAPONS IN A CEMETERY.
THEY HID AMMUNITION IN
PRIVATE HOMES. THEY HID
BOMBS IN MOSQUES, BUT THEY
COULD NOT HIDE FROM THE
UNITED STATES MARINES.”***

(PRESIDENT G.W. BUSH)

FIRE SUPPORT PLAN

“Planned De-Confliction”

5-Mile Nautical Ring

Rotary Wing CAS
Battle Positions

Coordinated
Firing
Line
(CFL) Box

Aircraft
Coordination
Area (ACA)

● Artillery Position

TIGHT BATTLESPACE REQUIRED A DE-CONFLICTED FIRE SUPPORT PLAN

- CAS used a keyhole template
- F/W aircraft inside 5NM ring had to stay above 9000 ft
- Artillery & Mortar fire had to stay below 8500 ft
- “Gunline” ACA separated artillery fire from Rotary Wing (RW) CAS
- R/W CAS Battle Positions (BP) from 0-1500 feet were activated as needed
- “CFL Box” allowed surface and R/W fires into southern portion of city w/o clearance

ORDNANCE EXPENDED

Aviation

- 318 Bombs
- 391 Rockets and missiles
- 93,000 machinegun & cannon

Artillery

- Over 6,000 rounds

Mortar

- Over 8,900 81mm & 120mm