

Academic Year 2026 Command Brief Education Command / Marine Corps University



EDUCATING MARINES TO PREVAIL IN COMBAT

Our Mission

Marine Corps University/ Education Command educates Marines to prevail in combat.



EDUCATING MARINES TO PREVAIL IN COMBAT

Our Values

Heritage

Upholding our legacy as an elite fighting force, we preserve and present the history of the United States Marine Corps to our successors and the public.



Generals Lejeune and Williams study the Civil War with Antietam veterans.

Innovation

We educate Marines to be pioneers and lifelong learners of critical thinking, collaboration, initiative, and leadership.



BGen Tracy introduces distinguished guest speakers at an MCU President's lecture event discussing technology and innovation with help of Warfighting Lab's experimental robot dog.

Decisiveness

Highly disciplined in planning, decision-making, and execution, we develop Marines to deliver timely, relevant, and compelling solutions to complex problems.



General Dunford briefs the President of the United States.



Our Vision

Be the premier institution where warfighters explore history's lessons, integrate novel technology, and emerge as the most capable, sought-after leaders in the ever-evolving landscape of conflict. We are dedicated to fostering a culture of continuous professional military education, strategic thinking, and excellence, equipping our graduates to face future challenges with resilience and to lead with unwavering honor, courage, and commitment.



Why PME

PME Expands the Marine Corps' Intellectual Advantage

- PME elevates leaders beyond that baseline—strengthening critical thinking, judgment, and adaptability in complex environments.

Develops Leaders for the Challenges of Future Warfare

- Enables leaders to anticipate change, innovate, and out-think adversaries in contested, multi-domain operations.

Builds Ethical, Character-Driven Decision Makers

- Cultivates leaders capable of making morally grounded decisions under uncertainty and pressure.

Strengthens Institutional Knowledge & Strategic Understanding

- Connects history, doctrine, and lessons learned to emerging warfighting concepts.

Builds Shared Understanding of the Operating Environment

- Enabling Marines to anticipate how allies, partners, and potential adversaries think, plan, and fight.

Accelerates Innovation and Problem-Solving

- Wargaming for peer competition and experiential learning for desired course outcomes.

Training raises the floor; *Education* raises the ceiling.

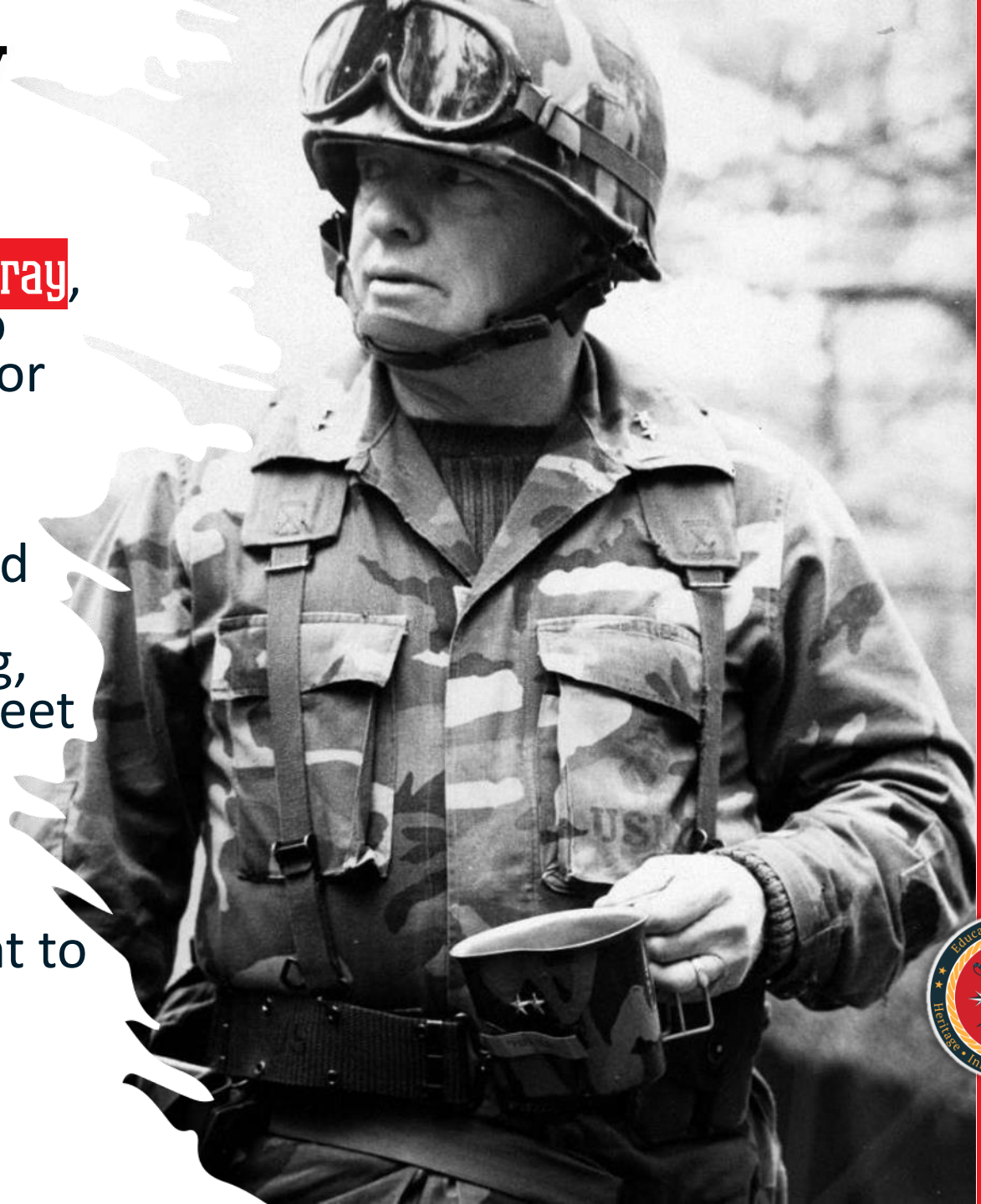


GEN ALFRED M. GRAY

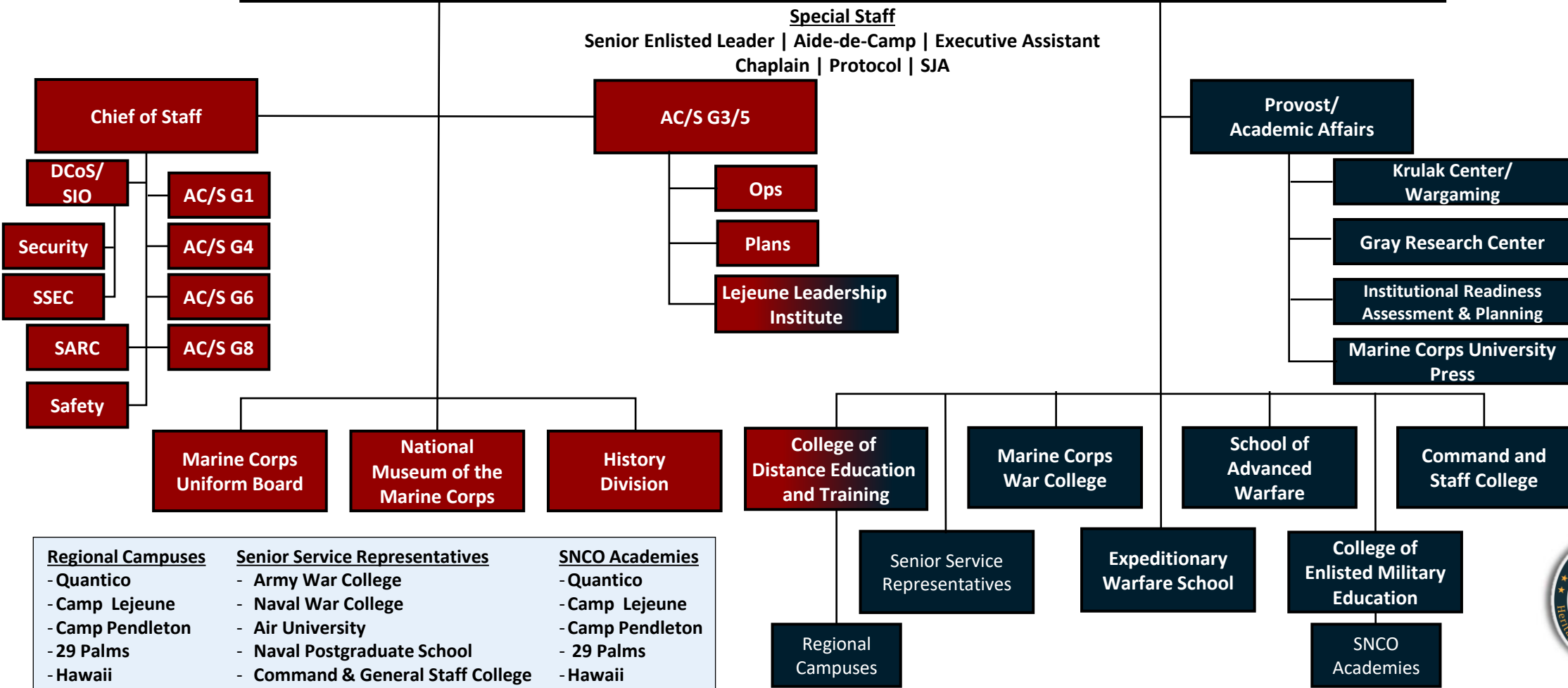
Founded in 1989 by **General Alfred M. Gray**, MCU builds on a legacy dating back to World War I, emphasizing education for Marine leaders.

With a focus on maneuver warfare and adaptability, MCU is committed to strengthening leader's critical thinking, creativity, and military judgment to meet future challenges in the ever-evolving operating environment.

General Gray's vision and commitment to education continue to shape MCU's mission.



Education Command / Marine Corps University Org Chart



<u>Regional Campuses</u>	<u>Senior Service Representatives</u>	<u>SNCO Academies</u>
- Quantico	- Army War College	- Quantico
- Camp Lejeune	- Naval War College	- Camp Lejeune
- Camp Pendleton	- Air University	- Camp Pendleton
- 29 Palms	- Naval Postgraduate School	- 29 Palms
- Hawaii	- Command & General Staff College	- Hawaii
- Okinawa		- Okinawa
- Ft Worth		
- Miramar		



EDUCATING MARINES TO PREVAIL IN COMBAT

Global Coverage



EDUCATING MARINES TO PREVAIL IN COMBAT

Professional Military Education Community Snapshot

Officer PME Students Enrolled	
MCWAR (Resident)	35
CSC (Resident)	193
CSC (Distance)	788
CSC (Blended)	83
SAW (Resident)	26
EWS (Resident)	235
EWS (Distance)	2,652
EWS (Blended)	128
RSSC (Resident)	30
Foreign PME (Resident)	26
TOTAL	4,196

MCU Faculty	
Civilian Faculty	52
Military Faculty	184
CDET Faculty	351
TOTAL	587

Enlisted PME Students Enrolled	
Leading Marines Prerequisite (Distance)	6,696
Corporals Course Prerequisite (Distance)	11,145
Sergeants School Prerequisite (Distance)	4,822
Sergeants School Seminar (Distance)	583
Sergeants School (Resident)	3,236
Career School Prerequisite (Distance)	2,898
Career School Seminar (Distance)	426
Career School (Resident)	1,231
Advanced School Prerequisite (Distance)	1,996
Advanced School Seminar (Distance)	269
Advanced School (Resident)	852
First Sergeants School (Resident)	236
Cornerstone	195
TOTAL	34,585



USMC Officer Education Continuum

Strategy/Policy



Combined/Joint Task Force (CJTF)



Marine Air Ground (Logistics)
Task Force (MAGTF)



EDUCATING MARINES TO PREVAIL IN COMBAT

AY26 Resident Officer PME Demographics

	USMC	USMCR	USA	USAF	USN	USSF	USCG	IMS	CIV	TOTAL
MCWAR	12	1	4	3	2	1	1	5	6	35
SAW	18	1	1	2	0	0	0	4	0	26
CSC	90	7	19	18	14	2	2	36	5	193
EWS	167	5	23	15	3	0	0	22	0	235
	287	14	47	38	19	3	3	67	11	489

Civilian Students:

MCWAR: DHS, NGA, DoS, FBI, TBS

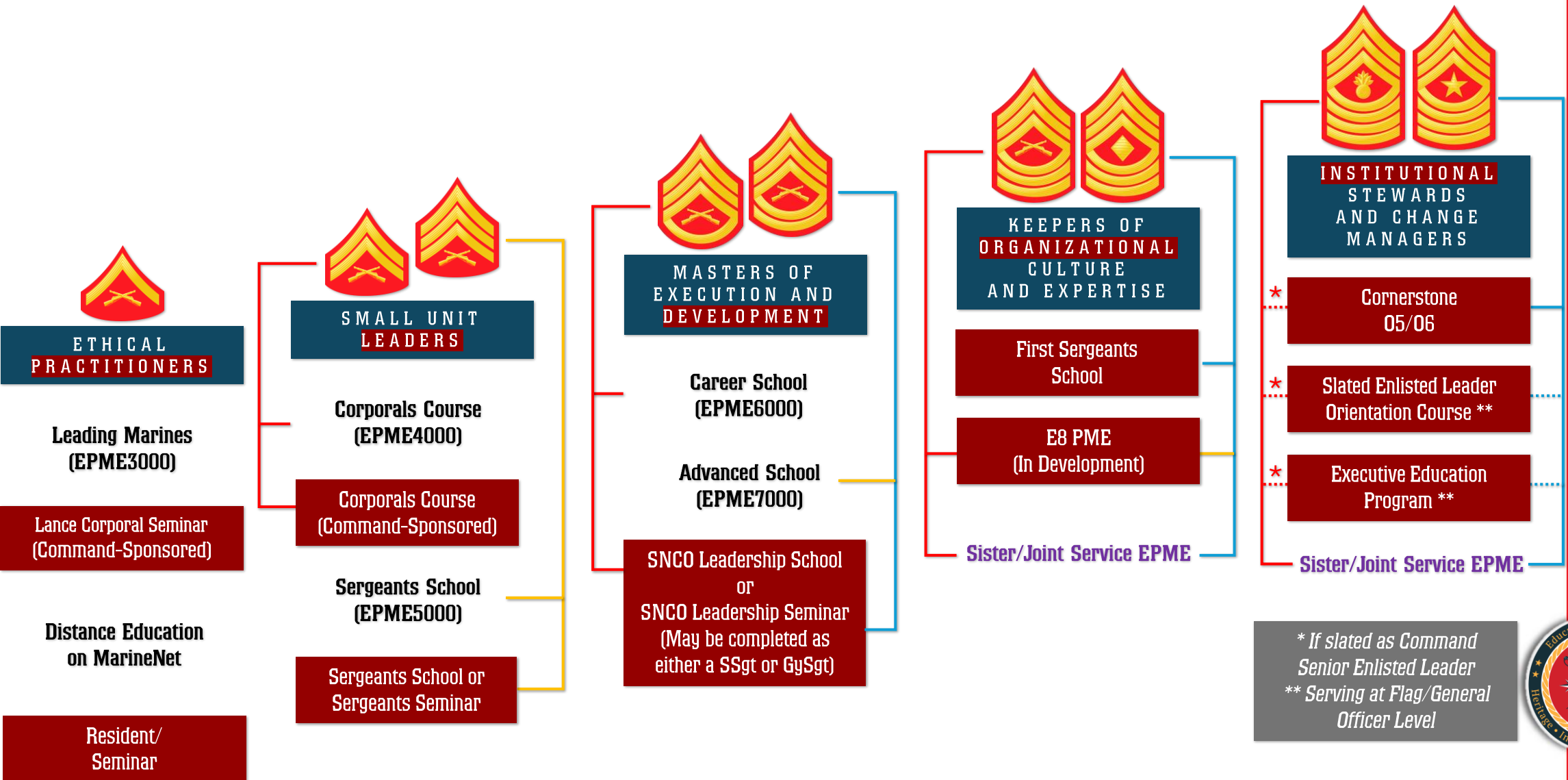
CSC: MARCORSSCOM, MCIA, DoS, FBI.

International Military Students (IMS):

Angola, Argentina, Australia, Bahrain, Brazil, Cameroon, Canada, Chile, Colombia, France, Germany, Greece, Indonesia, Israel, Italy, Japan, Jordan, Kenya, Korea, Lebanon, Malaysia, Mongolia, Netherlands, New Zealand, Norway, Pakistan, Philippines, Romania, Saudi Arabia, Singapore, Spain, Taiwan, Thailand, Tunisia, UAE, Ukraine, United Arab Emirates, United Kingdom.



Enlisted Professional Military Education Continuum



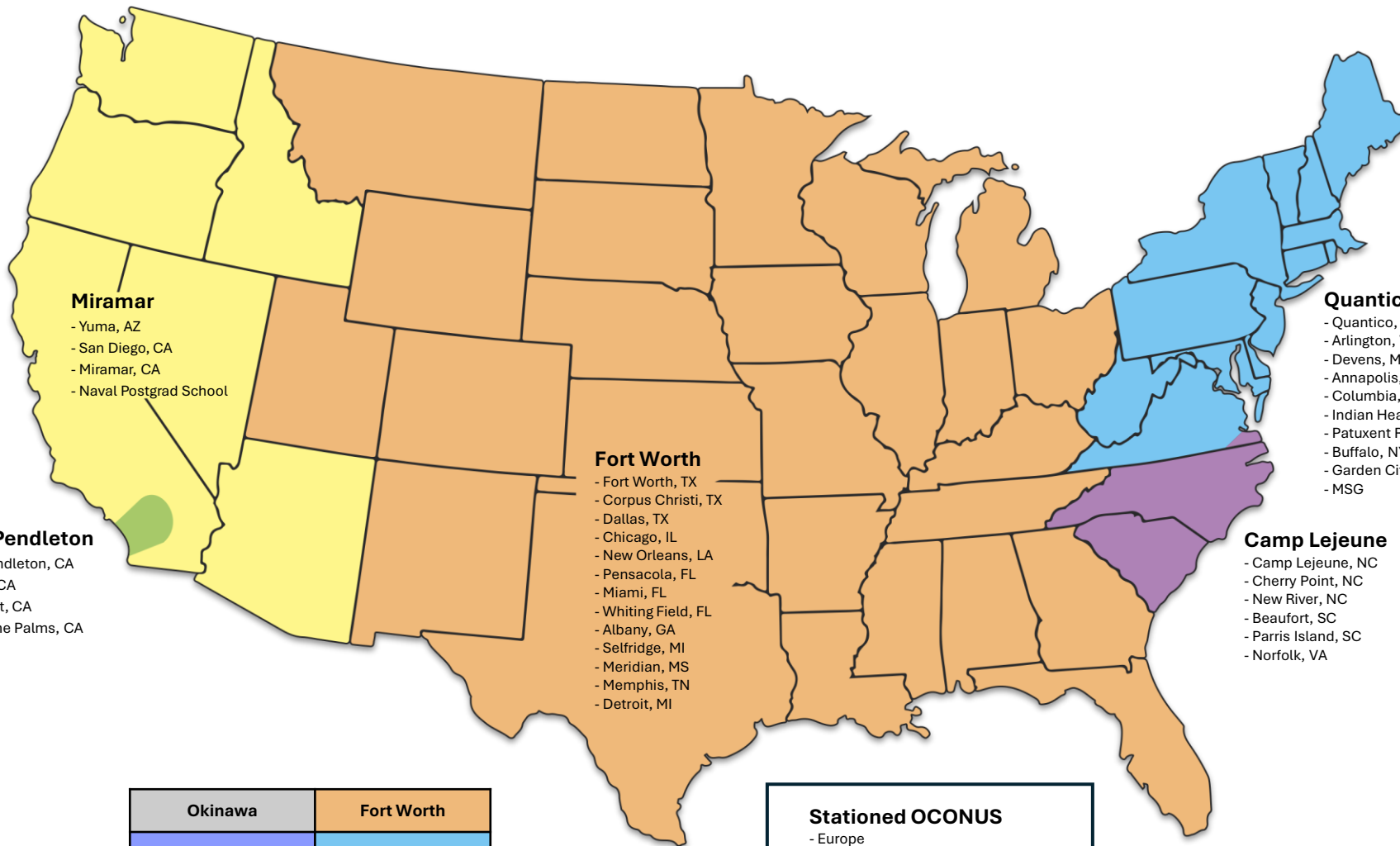
EDUCATING MARINES TO PREVAIL IN COMBAT

Distance PME Areas of Responsibility



Hawaii

- Kaneohe Bay, HI
- Camp Smith, HI
- Australia



Miramar

- Yuma, AZ
- San Diego, CA
- Miramar, CA
- Naval Postgrad School

Camp Pendleton

- Camp Pendleton, CA
- Barstow, CA
- Bridgeport, CA
- Twentynine Palms, CA

Fort Worth

- Fort Worth, TX
- Corpus Christi, TX
- Dallas, TX
- Chicago, IL
- New Orleans, LA
- Pensacola, FL
- Miami, FL
- Whiting Field, FL
- Albany, GA
- Selfridge, MI
- Meridian, MS
- Memphis, TN
- Detroit, MI

Quantico

- Quantico, VA
- Arlington, VA
- Devens, MA
- Annapolis, MD
- Columbia, MD
- Indian Head, MD
- Patuxent River, MD
- Buffalo, NY
- Garden City, NY
- MSG

Camp Lejeune

- Camp Lejeune, NC
- Cherry Point, NC
- New River, NC
- Beaufort, SC
- Parris Island, SC
- Norfolk, VA



Okinawa

- Okinawa, Japan
- Camp Fuji, Japan
- Iwakuni, Japan
- Guam
- Korea

Okinawa	Fort Worth
Hawaii	Quantico
Miramar	Camp Lejeune
Camp Pendleton	

Stationed OCONUS

- Europe
- Central/South America
- United Kingdom

Deployed OCONUS

Stay with the region closest to your home base or station



Marine Corps History Division

Collects, preserves, and presents historical information to inform decision-making, support research, and promote Marine Corps history.

Supported Agencies/ Target Audiences

1. HQMC, Marines, and Marine Corps units.
2. Congress and other USG agencies
3. The American Public

Archives Branch

- 95% of records declassified and available to researchers
- Holdings estimated 20M pages, >4M photographs, 30K maps.
- >2M digitized record pages and photographs (90% of all Command Chronologies)
- Answers 6,000 RFIs annually

Field History Branch

- Reserve Individual Mobilization Augmentees
- HD's "forward presence" with MEFs and operating units
- Collects "real time" records and oral histories, contributes written products

Histories Branch

- Researches and writes official operational and institutional history
- Multi-volume series; commemoratives, monographs, battle studies, etc.
- Collects oral histories, focusing on general officers

Priorities

Improve unit compliance with command chronology requirements to ensure critical USMC historical records are captured in the archive.

Digitize and develop remote public access to archival collections

Produce definitive histories on OIF and OEF



National Museum of the Marine Corps

Preserving our past, influencing the present, inspiring the future

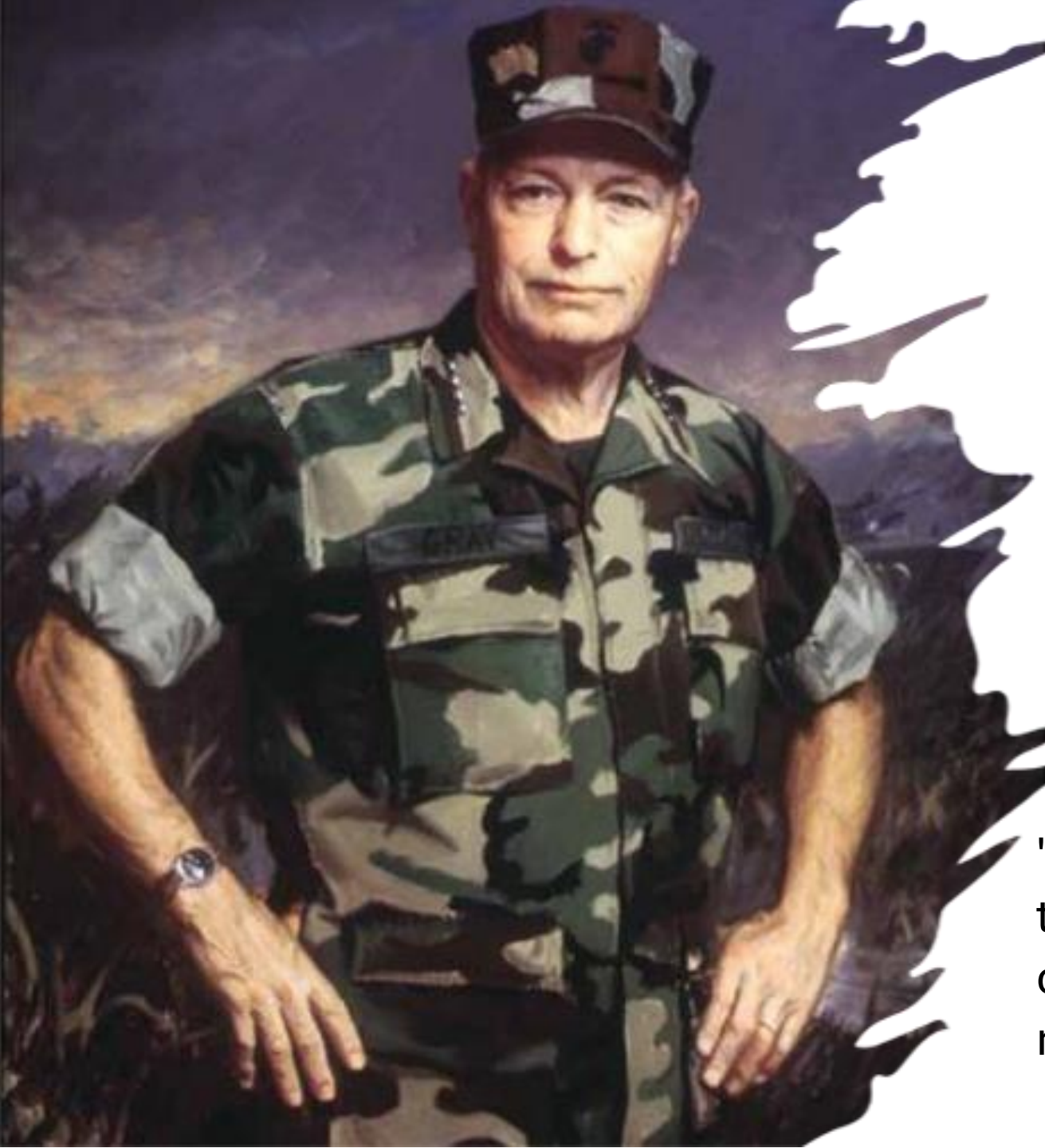
- **Strategic engagement for the Marine Corps**

- Over 400,000 visitors, 50,000 students, 13,500 distance learning students engaged every year.
- 250,000 fans/followers across six social media platforms and 18,000+ website visits/month
- Monthly family days, 2d Saturday art workshops, concerts, and more
- Venue of choice for unit PME events, organizational conferences, and ceremonies for Marines and their families including promotions, retirements, weddings, funerals, reunions, and more.

- **Marine Corps Heritage Center**

- 135-acre campus
- National Museum of the Marine Corps
 - Accredited by the American Alliance of Museums
- Semper Fidelis Memorial Chapel
- Semper Fidelis Memorial Park
- Children's Playground





Questions?

"In tactics, the most important thing is not whether you go left or right, but why you go left or right."

—A. M. Gray

