

UNCLASSIFIED

UNCLASSIFIED

3000  
CURRENT OPS  
29 SEP 97

UNCLASSIFIED UPON REMOVAL OF ENCLOSURE (1)

FROM: HEAD, CURRENT OPERATIONS BRANCH, OPERATIONS DIVISION,  
PLANS, POLICIES AND OPERATIONS DEPARTMENT, HEADQUARTERS,  
U.S. MARINE CORPS

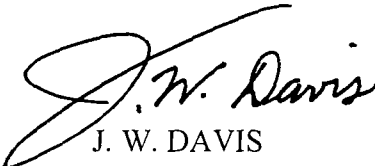
SUBJ: MONTHLY OPERATIONAL SUMMARY - MONTH FOR <sup>SEP</sup>~~OCT~~ 97

ENCL: (1) HQMC OPERATIONAL SUMMARY OF 26 SEP 97 (S)

1. THE ENCLOSURE IS PUBLISHED MONTHLY.
2. REQUEST THAT ERRORS, QUESTIONS, AND RECOMMENDATIONS REGARDING THE INFORMATION PRESENTED BE REPORTED TO:

COMMANDANT OF THE MARINE CORPS (POC),  
HEADQUARTERS , U.S. MARINE CORPS  
WASHINGTON, D.C. 20380-1775.

- (A) COMMERICAL: (703) 614-2151
- (B) DSN: 224-2151/1617
- (C) STU III: 224-2151/1617
- (D) FAX: 225-7366

  
J. W. DAVIS

DERIVED FROM: MULTIPLE SOURCES  
DECLASSIFY ON: X4

UNCLASSIFIED

**UNCLASSIFIED****TABLE OF CONTENTS**

<b><u>WORLD WIDE SUMMARY</u></b>	TAB
U.S. OPERATIONS .....	A
MARINE CORPS DEPLOYMENTS .....	B
MAP- DEPLOYED MARINE FORCES .....	C
<b><u>COMMITTED FORCES</u></b>	
DEPLOYED .....	D
PREDEPLOYMENT .....	E
CONTINGENCY .....	F
<b><u>STATUS</u></b>	
INFANTRY BATTALIONS .....	G
<b><u>SCHEDULES</u></b>	
EXERCISES.....	H
MEU DEPLOYMENT .....	I
UDP DEPLOYMENT .....	J
CARRIER / AIR INTEGRATION .....	K
<b><u>LOCATION OF FORCES</u></b>	
CONUS/ OCONUS.....	L
AMPHIB SHIPS.....	M
MPSRON SHIPS.....	N
SECURITY FORCES.....	O
SECURITY GUARD.....	P
FMF COMMANDERS .....	Q
COUNTER DRUG OPERATIONS .....	R

**UNCLASSIFIED****UNCLASSIFIED**

## USSOUTHCOM

OPERATION	LOCATION	MISSION
SAFE BORDERS	ECUADOR	<ul style="list-style-type: none"> <li>• PROVIDE SUPPORT TO MAP OBSERVER GROUP OPERATIONS ALONG A PORTION OF DISPUTED ECUADOR - PERU BORDER</li> <li>• VERIFY IMPLEMENTATION OF, AND COMPLIANCE WITH, THE CEASE-FIRE AGREEMENT</li> <li>• FACILITATE DIPLOMATIC RESOLUTION OF THE BORDER DISPUTE</li> </ul>

## USCENTCOM

OPERATION	LOCATION	MISSION
SOUTHERN WATCH	IRAQ	<ul style="list-style-type: none"> <li>• ENFORCE SOUTHERN NFZ BELOW THE 33D PARALLEL</li> <li>• CONDUCT MILITARY OPERATIONS IN SUPPORT OF UNSCR: <ul style="list-style-type: none"> <li>- 687 (SOVEREIGNTY OF KUWAIT BORDER)</li> <li>- 688 (REPRESSION OF CIVILIAN POPULATION)</li> </ul> </li> </ul>
DESERT FOCUS*	SAUDI, ARABIA	<ul style="list-style-type: none"> <li>• CONDUCT CI FORCE PROTECTION OPERATIONS ISO CJTF-SWA</li> <li>• RELOCATION OF MULTI-SERVICE ASSETS/FACILITIES IMPROVEMENT</li> </ul>

## USCINCEUR

OPERATION	LOCATION	MISSION
NORTHERN WATCH*	NORTHERN IRAQ	<ul style="list-style-type: none"> <li>• ENFORCE NFZ N 36 DEGREE LATITUDE AGAINST IRAQI MIL A/C</li> <li>• MAINTAIN COALITION SURVEILLANCE AND MONITORING OF IRAQI MILITARY AND GOVERNMENT FORCES IN NORTHERN IRAQ TO DETERMINE IRAQI COMPLIANCE WITH APPLICABLE UNSCN'S.</li> </ul>
DETERMINED GUARD	ADRIATIC SEA	MARITIME INTERCEPTION OPS ISO SFOR
DELIBERATE GUARD *	BOSNIA / HERZEGOVINA	<ul style="list-style-type: none"> <li>• ENFORCE NFZ OVER BOSNIA-HERZEGOVINA</li> <li>• PROVIDE AIR SUPPORT TO SFOR</li> <li>• FORMERLY DENY FLIGHT</li> </ul>
ABLE SENTRY	MACEDONIA	U.S. FORCES (REIN CO) PROVIDES SUPPORT TO UN OBSERVER MISSION IN FY/ROM MISSION
JOINT GUARD*	BOSNIA / HERZEGOVINA	IMPLEMENTATION OF MILITARY TASKS OF PEACE AGREEMENT UNDER AUTHORITY OF A UN SECURITY COUNCIL RESOLUTION (CHAPTER VII)

## USPACOM

OPERATION	LOCATION	MISSION
JTF FULL ACCOUNTING*	SOUTHEAST ASIA	SUPPORT NATIONAL EFFORTS FOR THE ACCOUNTING OF POWS/MIAS FROM THE VIETNAM WAR

\* DENOTES MARINE FORCES CURRENTLY ISO OPERATION

A

# DEPLOYMENT USMC FORCES (ESTIMATED LOCATIONS FOR 260600L SEP 97)

OPERATION ALASKA ROAD  
CO B, 7TH ENGR SPT BN  
DET, 1ST SRIG  
ANNETTE ISLAND, ALASKA  
PAGE D-4

OPERATION DELIBERATE GUARD  
VMAQ-2(-)  
AVIANO AB, ITALY  
PAGE D-3

OPERATION JOINT GUARD  
DET. VMU-2  
DET. VMU-1  
INDIVIDUAL USMC AUGMENTEES  
EUCOM THEATER  
PAGE D-3

OPERATION NORTHERN WATCH  
VMAQ-1(-)  
INCIRLIK, TURKEY  
PAGE D-4

USS CONSTELLATION  
VMFA-323  
ENR EVERETT, WA  
PAGE D-4

USS NIMITZ  
VMFA-314  
ENR HONG KONG  
CHINA  
PAGE D-4

PANAMA CANAL ZONE SECURITY  
Co B (REIN), 1/8  
DET SC Co HQ BN  
RODMAN N.S., PANAMA  
PAGE D-5

EX DUTCH BILAT  
DET. SCCO  
CURACAO,  
NETHERLANDS ANTILLES  
PAGE D-5

UNITAS DEPLOYMENT  
II MEF, MARFOR UNITAS  
USS WHIDBEY ISLAND  
PVST VALPARAISO,  
CHILE  
PAGE D-5

EX NEW HORIZONS  
GUYANA 97  
MWSS-274  
CAMP STEPHENSON  
GUYANA  
PAGE D-6

PHIBRON 4  
22D MEU(SOC)  
USS KEARSARGE, WASHDOWN, ROTA SPAIN  
USS CARTER HALL, DYNAMIC MIX  
USS PONCE, DYNAMIC MIX  
PAGE D-2

PHIBRON 1  
13TH MEU(SOC)  
U/W OPS ENR  
SINGAPORE  
USS PELELIU  
USS JUNEAU  
USS COMSTOCK  
PAGE D-1



**U.S. MARINE CORPS DEPLOYMENTS  
(IN SUPPORT OF WORLD WIDE OPERATIONS AND MAJOR EXERCISES)**

<b>USCINCEUR</b>				
<b>UNITS</b>	<b>LOCATION</b>	<b>STRENGTH</b>	<b>OPERATIONS</b>	<b>REMARKS</b>
VMAQ-2(-)	AVIANO AB. ITALY	161	DELIBERATE GUARD	Conducting Electronic Warfare (EW) Missions ISO OP DELIBERATE GUARD.
INDIVIDUAL USMC AUGMENTEES	EUCOM THEATER	49	JOINT GUARD	ISO SFOR.
DET, VMU-1	EUCOM THEATER	10	JOINT GUARD	Det VMU-1, ISO SFOR. P-3 downlink support.
DET, VMU-2	EUCOM THEATER	6	JOINT GUARD	Det, VMU-2, ISO SFOR. P-3 downlink support.
VMAQ-1(-)	INCIRLIK, TURKEY	127	NORTHERN WATCH	Operation maintains coalition surveillance and monitoring of Iraqi forces in Northern Iraq.
22D MEU(SOC) USS KEARSARGE ARG BLT-1/2 HMM-261(REIN) MSSG-22	SPLIT ARG	2,132	FORWARD PRESENCE	USS Kearsarge pvst Rota, Spain, 24 Sep - 2 Oct. Kearsarge will conduct washdown while in Rota USS Carter Hall & USS Ponce in Greece for Exercise Dynamic Mix, 23 Sep - 7 Oct
<b>USPACOM</b>				
13H MEU(SOC) USS PELELIU ARG BLT-1/1 HMM-164(REIN) MSSG-13	WESTERN PACIFIC	2,137	FORWARD PRESENCE	En route Singapore for pvst, 23-29 Sep. MEU will conduct sustainment training while in Singapore.
VMFA-323 USS CONSTELLATION	EVERETT, WA	229	FORWARD PRESENCE	Conducts offload Everett, Washington, 25 Sep. En route Home port North Island, CA, 1 Oct.
VMFA-314 USS NIMITZ	WESTERN PACIFIC	215	FORWARD PRESENCE	Participate in Valiant Blitz 97 through 25 Sep. En route Hong Kong, China for pvst 28 Sep - 1 Oct.
CO B, 7TH ENGR SPT BN; DET, 1ST SRIG	EASTERN PACIFIC	150	OPERATION ALASKA ROAD	Base Camp Construction for Joint Forces Eng Component Annette Island, Alaska. Arrive homeport aboard USS Denver, 2 Oct.

USSOUTHCOM				
UNITS	LOCATION	STRENGTH	OPERATIONS	REMARKS
Co B (REIN), 1/8 DET SC Co, HQ BN, 2D MARDIV	RODMAN N.S., PANAMA	171	CANAL ZONE SECURITY	Provide security for US installations and facilities and designated US ships transiting Panama Canal and as an augmenting force to spt USCinCSo trng initiatives, deployments and exercises.
II MEF MARFOR UNITAS: PLT 2D LARBN; PLT A Co, 2D ASLT AMPHIB BN; DET, RECON BN; USS WHIDBEY ISLAND	VALPARAISO, CHILE	260	UNITAS	Phase IV (Chile) on 17 Sep - 5 Oct. Pvst Valparaiso, Chile 24 - 26 Sep. En route Talchuan, Chile for pvst 29 - 30 Sep.
DET, SMALL CRAFT CO	CURACAO, NETHERLANDS ANTILLES	24	EX DUTCH BILAT 3-97	Bilateral Exchange, conducting small unit tactics training with the Royal Netherlands Marines, 12 - 27 Sep.

UNCLASSIFIED

**13TH MEU(SOC)**

28 AUG 97 - 28 FEB 98

**(U) CURRENT STATUS: ARG U/W OPS EN ROUTE PVST SINGAPORE 23-29 SEP**

(C) TASK ORGANIZATION	USMC OFF/ENL		USN OFF/ENL		COMMANDING OFFICER
	CE, 13TH MEU	30	157	1	
BLT 1/1	57	1,092	3	49	LTCOL S. A. HUMMER
HMM-164 (REIN)	71	350	1	3	LTCOL P. M. O'DONOGUE
MSSG-13	12	218	3	20	LTCOL C. P. SCHUCHARDT
TOTAL	170	1,817	8	75	
TOTAL --- 2,070					

**(C) ARMS AND EQUIPMENT IN POSSESSIONS:**

NUMBER	ITEM	NUMBER	ITEM
13	AAVP-7A1	8	LAV-25
1	AAVC-7A1	1	LAV-C2
1	AAVR-7A1	1	LAV(L)
6	M198	2	LAV(M)
8	TOWS	4	M1A1
1	M88	1	AN/MLQ-36A

**(C) AIRCRAFT O/H:**

NUMBER	TYPE	NUMBER	TYPE
12	CH-46E	4	AH-1W
4	CH-53E	3	UH-1N
6	AV-8B		

**AMPHIB INFORMATION**

USS PELELIU	LHA-5
USS COMSTOCK	LSD-45
USS JUNEAU	LPD-10
COMPHIBRON 1	CAPT DONLON (USN)

**(C) LANDING CRAFT:**

SHIP	NUMBER	TYPE
USS PELELIU	1	LCAC
USS JUNEAU	2	LCU
USS COMSTOCK	3	LCAC

**FUTURE PLANS**

30 SEP - 5 OCT	ARG PVST SINGAPORE
----------------	--------------------

**(U) REFERENCE: 13TH MEU SITREP #29DTG 181200Z SEP 97/CNO NOTES OF 26 SEP 97**

DEPLOYED FORCES

D-1

SECRET

UNCLASSIFIED

UNCLASSIFIED

## 22D MEU(SOC)

16 APR - 15 OCT 97

**(U) CURRENT STATUS**

USS KEARSARGE PVST ROTA, SPAIN 24 SEP - 2 OCT. KEARSARGE CONDUCT WASHDOWN DURING PVST

USS CARTER HALL & USS PONCE PARTICIPATE IN DYNAMIC MIX 97, A NATO MULTILATERAL EXERCISE, 23 SEP - 8 OCT

<b>(C) TASK ORGANIZATION</b>	<b>USMC OFF/ENL</b>		<b>USN OFF/ENL</b>		<b>COMMANDING OFFICER</b>
CE, 22D MEU	30	168	3	3	COL S. T. HELLAND
BLT 1/2	58	1,071	4	55	LTCOL T. C. GREENWOOD
HMM-261 (REIN)	67	398	1	4	LTCOL T. C. HANIFEN
MSSG-22	14	233	3	21	LTCOL C. M. HERNDON JR
TOTAL	169	1,870	11	83	

TOTAL --- 2,132

**(C) ARMS AND EQUIPMENT IN POSSESSIONS:**

NUMBER	ITEM	NUMBER	ITEM
13	AAVP-7A1	4	LAV-25
1	AAVC-7A1	2	LAV(AT)
1	AAVR-7A1	1	LAV(L)
8	81MM MORTAR	4	M1A1
8	TOWS	1	M88
6	M198	1	AN/MLQ-36
1	AN/TSC-93		

**(C) AIRCRAFT O/H:**

NUMBER	TYPE	NUMBER	TYPE
12	CH-46E	4	AH-1W
4	CH-53E	2	UH-1N
6	AV-8B		

**AMPHIB INFORMATION**

USS KEARSARGE	LHD-3
USS CARTER HALL	LSD-50
USS PONCE	LPD-15
COMPHIBRON 4	CAPT ERTEL(USN)

**(C) LANDING CRAFT:**

SHIP	NUMBER	TYPE
USS KEARSARGE	3	LCAC
USS CARTER HALL	1	LCU
USS PONCE	1	LCU

**FUTURE PLANS**

03 OCT	USS KEARSARGE OUTCHOP 6TH FLEET
--------	---------------------------------

**(U) REFERENCE: 22D MEU SITREP #45 DTG 191902Z SEP 97/CNO NOTES OF 26 SEP 97**

DEPLOYED FORCES

D-2

SECRET

UNCLASSIFIED



UNCLASSIFIED

**JOINT GUARD**  
**INDIVIDUAL USMC AUGMENTEES**  
**(EUCOM THEATER)**  
 (DEC 96 - JUL 98)

<b>(U) CURRENT STATUS</b>		ISO JOINT GUARD
<b>(U) TASK ORGANIZATION</b>	<b>ACTIVE/ RESERVE</b>	<b>COMMANDING OFFICER</b>
BOSNIA	32	N/A
CROATIA	4	N/A
RIM (ITALY/HUNGARY)	5	N/A
TRNG, EUCOM BACKFILL/AFLOAT	8	N/A
TOTAL	49	N/A
<b>(U) REFERENCE: NUMBERS PROVIDED BY MPP-60, MRS. GRIFFE, DTD 22 SEP 97</b>		

**JOINT GUARD**  
**DET, VMU-2 (26 MAY - 26 NOV 97)**

<b>(U) CURRENT STATUS</b>		ISO JOINT GUARD	
<b>(U) TASK ORGANIZATION</b>	<b>USMC OFF/ENL</b>	<b>USN OFF/ENL</b>	<b>COMMANDING OFFICER</b>
DET, VMU-2	6		N/A
TOTAL --- 6			
<b>(U) REFERENCE: II MEF SEMI-MONTHLY RPT 24-97 DTG 130510Z AUG 97.</b>			

**JOINT GUARD**  
**DET, VMU-1 (21 JUL - 15 OCT)**

<b>(U) CURRENT STATUS</b>		ISO JOINT GUARD	
<b>(U) TASK ORGANIZATION</b>	<b>USMC OFF/ENL</b>	<b>USN OFF/ENL</b>	<b>COMMANDING OFFICER</b>
DET, VMU-1	10		N/A
TOTAL --- 10			
<b>(U) REFERENCE: I MEF SEMI-MONTHLY RPT 24-97 DTG 150117Z AUG 97</b>			

**OPERATION DELIBERATE GUARD**  
**VMAQ-2(-)(24 AUG 97 - 24 FEB 98)**  
**(AVIANO AIRBASE, ITALY)**

<b>(U) CURRENT STATUS: CONDUCTING ELECTRONIC WAREFARE (EW) MISSIONS ISO OP DELIBERATE GUARD</b>			
<b>(C) TASK ORGANIZATION</b>	<b>USMC OFF/ENL</b>	<b>USN OFF/ENL</b>	<b>COMMANDING OFFICER</b>
VMAQ-2(-)	161		LTCOL KORAN
TOTAL ---161			
<b>(C) AIRCRAFT O/H: 3 X EA-6B</b>			
<b>(U) REFERENCE: CG II MEF SEMI-MONTHLY RPT 24-97 DTG 150117Z AUG 97</b>			

DEPLOYED FORCES  
 D-3  
 SECRET

UNCLASSIFIED

**UNCLASSIFIED OPERATION NORTHERN WATCH**

VMAQ-1(-) (20 JUN 97 - 1 JAN 98)  
(INCIRLIK, TURKEY)

(U) CURRENT STATUS: VMAQ-1(-) MAINTAINING COALITION SURVEILLANCE AND MONITORING OF IRAQI FORCES IN NORTHERN IRAQ FROM INCIRLIK, TURKEY

(C) TASK ORGANIZATION	USMC OFF/ENL		USN OFF/ENL		COMMANDING OFFICER
VMAQ-1(-)	18	96	1	1	LTCOL F. J. SCHEINER

TOTAL --- 116

(C) AIRCRAFT O/H: 4 X EA-6B

(U) REFERENCE: VMAQ-1 WEEKLY SITREP DTG 030625Z AUG 97

**VMFA-323**

USS CONSTELLATION CV-64 (CVW-2)  
(2 APR - 2 OCT)

(U) CURRENT STATUS: EVERETT, WASHINGTON FOR OFFLOAD.

(C) TASK ORGANIZATION	USMC OFF/ENL		USN OFF/ENL		COMMANDING OFFICER
VMFA-323	25	202	1	1	LTCOL R. W. PRIEST

TOTAL---229

(C) AIRCRAFT O/H: 12 X F/A-18C

(U) REFERENCE: CNO NOTES OF 26 SEP 97

**VMFA-314**

USS NIMITZ CVN-68 (CVW-9)  
(SEP 97 - FEB 98)

CURRENT STATUS: PARTICIPATE IN VALIANT BLITZ 97. PVST HONG KONG 27 SEP - 1 OCT.

(C) TASK ORGANIZATION	USMC OFF/ENL		USN OFF/ENL		COMMANDING OFFICER
VMFA-314	17	196	1	1	LTCOL D. H. PEELER

TOTAL---215

(C) AIRCRAFT O/H: 12 X F/A-18C

(U) REFERENCE: CNO NOTES OF 26 SEP 97

**OPERATION ALASKA ROAD**

CO B, 7TH ENGR SPT BN

DET 1ST SRIG

(27 JUL - 28 SEP)

(U) CURRENT STATUS:  
BASE CAMP CONSTRUCTION FOR JOINT FORCES ENG COMPONENT, ANNETTE ISLAND, ALASKA

(U) TASK ORGANIZATION	USMC OFF/ENL	USN OFF/ENL	COMMANDING OFFICER
CO B, 7TH ENGR SPT BN; DET, 1ST SRIG	150		CAPT W. A. SINCLAIR

TOTAL --- 150

(U) REFERENCE: I MEF SEMI-MONTHLY RPT 24-97 DTG 150117Z SEP 97

DEPLOYED FORCES

D-4

SECRET

UNCLASSIFIED

UNCLASSIFIED

**UNITAS**  
**II MEF MARFOR UNITAS**  
 (2 JUL - 12 DEC)

**(U) CURRENT STATUS**

PHASE IV (CHILE). PVST VALPARAISO, CHILE 24 - 26 SEP.  
 MARFOR UNITAS PARTICIPATE AS A FORWARD DEPLOYED UNIT IN COMBINED TRAINING EXERCISES IOT PROMOTE INTEROPERABILITY, SUPPORT MUTUAL HEMISPHERIC DEFENSE, AND CULTIVATE CLOSER TIES WITH SOUTH AMERICAN MARINE CORPS FORCES

<b>(C) TASK ORGANIZATION</b>	<b>USMC OFF/ENL</b>	<b>USN OFF/ENL</b>	<b>COMMANDING OFFICER</b>
II MEF MARFOR UNITAS	290		MAJ M. B. WEST
TOTAL----290			

**(C) ARMS AND EQUIPMENT IN POSSESSIONS:**

NUMBER	ITEM	NUMBER	ITEM
8	RCC	4	RAC
5	LAV	8	AAV

**AMPHIB INFORMATION**

USS WHIDBEY ISLAND	LSD-41
<b>FUTURE PLANS</b>	
29 - 30 SEP	PVST TALCHUANO, CHILE

**(U) REFERENCE:** CNO NOTES OF 26 SEP 97/SITREP #9 DTG 192130Z SEP 97

**EXERCISE DUTCH BILAT**  
**DET, SMALL CRAFT CO**  
 (12 - 27 SEP)

**(U) CURRENT STATUS:** BILATERAL EXCHANGE, CONDUCTING SMALL UNIT TACTICS TRAINING WITH THE ROYAL NETHERLANDS MARINES

<b>(U) TASK ORGANIZATION</b>	<b>USMC OFF/ENL</b>	<b>USN OFF/ENL</b>	<b>COMMANDING OFFICER</b>
DET, SCCO	24		CAPT MITTAG
TOTAL --- 24			

**(U) REFERENCE:** II MEF SEMI-MONTHLY RPT 23-97 DTG 290330Z AUG 97  
FAX FROM CAPT LISTER (DIV G-3) OF 11 SEP 97

**ENHANCED SECURITY PANAMA CANAL ZONE**  
**(RODMAN N.S. , PANAMA)**  
 (2 SEP - 2 DEC 97 )

**(U) CURRENT STATUS** PROVIDE SECURITY FOR U.S. INSTALLATIONS, FACILITIES AND DESIGNATED U.S. SHIPS TRANSITING PANAMA CANAL

<b>(C) TASK ORGANIZATION</b>	<b>USMC OFF/ENL</b>	<b>USN OFF/ENL</b>	<b>COMMANDING OFFICER</b>
Co B (REIN), 1/8	154		CAPT ZELLERS
DET SC Co, HQ BN, 2D MARDIV	17		N/A
TOTAL ---171			

**(C) ARMS AND EQUIPMENT O/H:**

NUMBER	ITEM	NUMBER	ITEM
8	RRC	2	RAC

**(U) REFERENCE:** PHONCON W/MAJ PATTERSON (484-8196) OF 22 AUG 97

**DEPLOYED FORCES**  
**D-5**  
**SECRET**

UNCLASSIFIED

## PREDEPLOYMENT FORCES

UNCLASSIFIED

**11TH MEU**

PREDEPLOYMENT TRAINING PERIOD		19 JUL 97 - 15 JAN 98				
DEPLOYMENT PERIOD		15 JAN 98 - 15 JUL 98				
(U) CURRENT STATUS		CSSE TRUEX N. ISLAND, CA, 18 SEP - 7 OCT				
(C) TASK ORGANIZATION		USMC OFF/ENL		USN OFF/ENL		COMMANDING OFFICER
CE, 24TH MEU		29	164	2	3	COL T. L. MOORE, JR
BLT 1/4		58	1,200	3	47	LTCOL H. HOPPER
HMM-268 (REIN)		68	358	1	3	LTCOL J. T. ENOCH
MSSG-11		12	217	2	20	LTCOL M. C. LIEBER
TOTAL		167	1,939	8	73	
TOTAL --- 2,187						
(C) ARMS AND EQUIPMENT IN POSSESSIONS:						
NUMBER	ITEM		NUMBER	ITEM		
13	AAVP-7A1		9	LAV-25		
1	AAVC-7A1		2	LAV(AT)		
1	AAVR-7A1		2	LAV(L)		
6	M198		2	LAV(M)		
10	TOWS		1	LAV(R)		
10	81MM MORTAR		1	AN/MLQ-36A		
1	LAV(C)					
(C) AIRCRAFT O/H:						
NUMBER	TYPE		NUMBER	TYPE		
12	CH-46E		4	AH-1W		
4	CH-53E		3	UH-1N		
6	AV-8B					
AMPHIB INFORMATION						
USS TARAWA			LHA-1			
USS DENVER			LPD-9			
USS MT VERNON			LSD-39			
COMPHIBRON 3			CAPT P. STEVENS (USN)			
(C) LANDING CRAFT:						
SHIP		NUMBER	TYPE			
USS TARAWA		3	LCAC			
USS DENVER		1	LCU			
USS MT VERNON		2	LCAC			
FUTURE PLANS						
3 - 7 OCT			ACE TRUE TRAINING IN PT MUGU, CA			
(U) REFERENCE: 11TH MEU SITREP #09 DTG 191505Z SEP 97						

PREDEPLOYMENT FORCES

E-1

CONFIDENTIAL

UNCLASSIFIED

## 24TH MEU(SOC)

PREDEPLOYMENT TRAINING PERIOD			22 APR - 2 OCT 97			
DEPLOYMENT PERIOD			3 OCT 97 - 27 MAR 98			
(U) CURRENT STATUS			WASHINGTON, DC BRIEFINGS, 22 - 24 SEP			
(C) TASK ORGANIZATION		USMC OFF/ENL		USN OFF/ENL		COMMANDING OFFICER
CE, 24TH MEU		29	161	3	3	COL R. F. NATONSKI
BLT 3/6		57	1,127	4	53	LTCOL R. R. MILLS
HMM-263 (REIN)		60	306	1	3	LTCOL M. DUVA
MSSG-24		15	234	3	21	LTCOL B. L. TONNAKLIFF
TOTAL		161	1,828	11	80	
TOTAL --- 2,080						
(C) ARMS AND EQUIPMENT IN POSSESSIONS:						
NUMBER	ITEM		NUMBER	ITEM		
13	AAVP-7A1		4	LAV-25		
1	AAVC-7A1		2	LAV(AT)		
1	AAVR-7A1		1	LAV(L)		
6	M198		4	M1A1		
10	TOWS		1	M88		
8	81MM MORTAR		1	AN/MLQ-36A		
1	AN/TSC-93					
(C) AIRCRAFT O/H:						
NUMBER	TYPE		NUMBER	TYPE		
12	CH-46E		4	AH-1W		
4	CH-53E		2	UH-1N		
6	AV-8B (CONUS STANDBY)					
AMPHIB INFORMATION						
USS GUAM			LPH-9			
USS SHREVEPORT			LPD-12			
USS ASHLAND			LSD-48			
USS OAK HILL			LSD-51			
COMPHIBRON 2			CAPT P. L. SOWA(USN)			
(C) LANDING CRAFT:						
SHIP		NUMBER	TYPE			
USS SHREVEPORT		1	LCU			
USS ASHLAND		4	LCAC			
USS OAK HILL		1	LCU			
FUTURE PLANS						
4 OCT			LF6F DEPLOYMENT			
(U) REFERENCE: 24TH MEU SITREP #24 DTG 252359Z SEP 97						

UNCLASSIFIED

**26TH MEU**

PREDEPLOYMENT TRAINING PERIOD		25 AUG 97 - 26 FEB 98			
DEPLOYMENT PERIOD		27 FEB 98 - 27 AUG 98			
(U) CURRENT STATUS		BLT/MSSG TO FT A.P. HILL FOR INDIVIDUAL AND TEAM TRAINING, 14 - 27 SEP			
(C) TASK ORGANIZATION	USMC OFF/ENL	USN OFF/ENL	COMMANDING OFFICER		
CE, 26TH MEU	35 180	3 2	COL E. N. GARDNER JR		
BLT 3/2	60 1,151	4 52	LTCOL J. L. LEDOUX		
HMM-264 (REIN)	56 263	1 2	LTCOL E. K. CONTI		
MSSG-26	14 240	3 22	LTCOL W. C. BELL		
TOTAL	165 1,834	11 78			
TOTAL --- 2,088					
(C) ARMS AND EQUIPMENT IN POSSESSIONS:					
NUMBER	ITEM	NUMBER	ITEM		
13	AAVP-7A1	8	LAV-25		
1	AAVC-7A1	2	LAV(M)		
1	AAVR-7A1	1	LAV(L)		
6	M198	1	LAV(C)		
8	TOWS	8	81MM MORTAR		
1	AN/MLQ-36A	1	AN/TSC-93B		
(C) AIRCRAFT O/H:					
NUMBER	TYPE	NUMBER	TYPE		
12	CH-46E	3	AH-1W		
4	CH-53E	1	UH-1N		
N/A	AV-8B				
AMPHIB INFORMATION					
USS WASP		LHD			
USS TRENTON		LPD			
USS PORTLAND		LSD			
COMPHIBRON 6		CAPT MAHONEY (USN)			
(C) LANDING CRAFT:					
SHIP		NUMBER	TYPE		
USS WASP		TBD	TBD		
USS TRENTON		TBD	TBD		
USS PORTLAND		TBD	TBD		
FUTURE PLANS					
30 SEP - 2 OCT		TRAINING IN AN URBAN ENVIRONMENT (TRUE), MEMPHIS, TN			
(U) REFERENCE: 26TH MEU SITREP #3 DTG 152113Z SEP 97.					

## PREDEPLOYMENT FORCES

## 31ST MEU(SOC)

### (OKINAWA)

(U) CURRENT STATUS: 1/5 ADV PARTY DEPARTS FOR CONUS, 21SEP. 2/5 ADV PARTY ARRIVES OKINAWA.

(C) TASK ORGANIZATION	USMC OFF/ENL		USN OFF/ENL		COMMANDING OFFICER
	CE, 31ST MEU	21	122	1	
BLT 1/5	53	1,052	3	48	LTCOL J. T. BOGGS JR
HMM-262 (REIN)	65	322	1	3	LTCOL W. E. HARDY
MSSG-31	14	227	2	19	LTCOL J. W. CHANDLER
TOTAL	153	1,723	7	73	

TOTAL --- 1,956

(C) ARMS AND EQUIPMENT IN POSSESSIONS:

NUMBER	ITEM	NUMBER	ITEM
12	AAVP-7A1	4	LAV-25
1	AAVR-7A1	2	LAV(AT)
8	81MM MORTAR	1	LAV(L)
6	M198		
10	TOWS		

(C) AIRCRAFT O/H:

NUMBER	TYPE	NUMBER	TYPE
12	CH-46E	3	UH-1N
5	CH-53E	4	AH-1W
6	AV-8B		

AMPHIB INFORMATION

USS BELLEAU WOOD	LHA-3
USS GERMANTOWN	LSD-42
USS DUBUQUE	LPD-8
USS FT MCHENRY	LSD-43
COMPHIBRON 11	CAPT R. A. SILVERS(USN)

(C) LANDING CRAFT:

SHIP	NUMBER	TYPE
USS BELLEAU WOOD	4	LCU
USS DUBUQUE	1	LCU
USS FT MCHENRY	3	LCAC

FUTURE PLANS

23 OCT - 4 NOV	PARTICIPATE IN FOAL EAGLE 97
----------------	------------------------------

(U) REFERENCE: 31ST MEU SITREP #26 DTG 110520Z AUG 97

## PREDEPLOYMENT FORCES

UNCLASSIFIED

VMFA-251					
USS GEORGE WASHINGTON CVN-73					
PREDEPLOYMENT TRNG PERIOD			FEB-OCT 97		
DEPLOYMENT PERIOD			OCT 97-MAR 98		
CURRENT STATUS			PREDEPLOYMENT TRNG		
(C) TASK ORGANIZATION	USMC OFF/ENL		USN OFF/ENL		COMMANDING OFFICER
VMFA-251	15	190	1	2	LTCOL A. W. VALENTINO
TOTAL---208					
(C) AIRCRAFT O/H:			12 X F/A-18C		
FUTURE PLANS					
3 OCT			DEPART FOR DEPLOYMENT		
(U) REFERENCE: PHONCON w/VMFA-251 ON 30 JUL 97 (832-7414)					

PREDEPLOYMENT FORCES

E-5

CONFIDENTIAL

UNCLASSIFIED



CONTINGENCY FORCES  
970926

UNCLASSIFIED

<b>I MEF</b>	
EASTPAC CONTINGENCY	11TH MEU(SOC)
WESTPAC CONTINGENCY	13TH MEU(SOC)
I MEF READY ARG	USS PELELIU (LHA-5)
	USS COMSTOCK (LSD-45)
	USS JUNEAU (LSD-10)
ALERT MAGTF CE:	I MEF (FWD)
GCE	1/7
ACE	3D MAW(FWD)
CSSE	1ST FSSG(FWD)
<b>II MEF</b>	
II MEF ARF	24TH MEU(SOC)
II MEF READY ARG	USS GUAM (LPH-9)
	USS SHREVEPORT (LSD-12)
	USS ASHLAND (LPD-48)
	USS OAK HILL (LPD-51)
AIR CONTINGENCY FORCE	
CE	2D MAR
GCE	2/6 (REIN)
ACE	DET, HMLA-167
CSSE	DET, 2D LSB
FOLLOW-ON ACF	
CE	2D MAR
GCE	1/8 (REIN)
ACE	DET, HMLA-167
CSSE	DET, 2D LSB
<b>III MEF</b>	
WESTPAC CONTINGENCY	31ST MEU(REIN)
GCE	1/5(REIN)
ACE	HMM-262(REIN)
CSSE	MSSG-31
AIR CONTINGENCY FORCE	
LEAD ECH GCE	3/8(REIN)
LEAD ECH ACE	DET, 1ST STINGER BTRY
LEAD ECH CSSE	CSSD - 39
FOLLOW-ON GCE	2/3(REIN)

CONTINGENCY FORCES

F

SECRET

UNCLASSIFIED

UNCLASSIFIED

## MARINE INFANTRY BATTALIONS (STATUS)

MARFORPAC					
UNIT	DEPLOYED (DATE)	COMMITTED 90 DAYS UDP 180 DAYS MEU	RETURNED (WITHIN 60 DAYS)	OPS/ LOCAL TRNG	FUTURE UDP / MEU DEPLOYMENTS
1/1	<u>13TH MEU</u> AUG 97 - FEB 98				<u>11TH MEU</u> JUN - DEC 99 LOCK-ON/OCT 98
2/1			<u>15TH MEU</u> MAR - SEP 97		<u>13TH MEU</u> NOV 98 - MAY 99 LOCK-ON/MAY 98
3/1				<b>X</b>	<u>15TH MEU</u> JUN - DEC 98 LOCK-ON/JAN 98
1/4		<u>11TH MEU</u> JAN - JUL 98			<u>15TH MEU</u> SEP 99 - MAR 00 LOCK-ON/MAR 99
1/5	<u>UDP/ 31ST MEU</u> MAY - NOV 97				<u>UDP/ 31ST MEU</u> MAY - NOV 99 LOCK-ON/FEB 99
2/5		<u>UDP / 31ST MEU</u> NOV 97 - MAY 98			<u>UDP</u> NOV 99 - MAY 00 LOCK-ON/NOV 99
3/5				<b>X</b>	<u>UDP / 31ST MEU</u> MAY - NOV 98 LOCK-ON/FEB 98
2/4				<b>X</b>	<u>UDP / 31ST MEU</u> NOV 98 - MAY 99 LOCK-ON/AUG 98
1/7				<b>X</b>	<u>UDP</u> FEB - AUG 98 LOCK-ON/NOV 97
2/7				<b>X</b>	<u>UDP</u> AUG 98 - FEB 99 LOCK-ON/MAY 98
3/7			<u>UDP</u> FEB - AUG 97		<u>UDP</u> FEB - AUG 99 LOCK-ON/NOV98
3/4	<u>UDP</u> AUG 97 - FEB 98				<u>UDP</u> AUG 99 - FEB 00 LOCK-ON/MAY 99
1/3				<b>X</b>	<u>UDP</u> JAN - AUG 98 LOCK-ON/OCT 98
2/3	<u>UDP</u> JUL 97 - JAN 98				<u>UDP</u> MAR - OCT 99 LOCK-ON/DEC 98
3/3				<b>X</b>	<u>UDP</u> AUG 98 - MAR 99 LOCK -ON MAY 98
PAC TOTAL	4	2	2	7	

# MARINE INFANTRY BATTALIONS (STATUS)

## (CONT)

MARFORLANT					
UNIT	DEPLOYED (DATE)	COMMITTED 90 DAYS UDP 180 DAYS MEU	RETURNED (WITHIN 60 DAYS)	OPS/ LOCAL TRNG	FUTURE UDP /MEU DEPLOYMENT
1/2	<u>22D MEU</u> APR - NOV 97				<u>UDP</u> JUN - DEC 99 LOCK-ON/MAR 99
2/2				<b>X</b>	<u>22D MEU</u> JUN - DEC 98 LOCK-ON/JAN 98
3/2		<u>26TH MEU</u> FEB - AUG 98			<u>UDP</u> DEC 99 - JUN 00 LOCK-ON/SEP 99
1/6				<b>X</b>	<u>24TH MEU</u> NOV 98 - MAY 99 LOCK-ON/MAY 98
2/6		<u>UDP</u> DEC 97 - JUN 98			<u>UDP</u> DEC 99 - JUN 00 LOCK-ON/SEP 99
3/6		<u>24TH MEU</u> OCT 97 - MAR 98			<u>22D MEU</u> SEP 99 - MAR 00 LOCK-ON/MAR 99
1/8				<b>X</b>	<u>UDP</u> DEC 98 - JUN 99 LOCK-ON/SEP 98
2/8				<b>X</b>	<u>UDP</u> JUN - DEC 98 LOCK-ON/MAR 98
3/8	<u>UDP</u> JUN - DEC 97				<u>26TH MEU</u> APR - OCT 99 LOCK-ON/ OCT 98
<b>LANT TOTAL</b>	<b>2</b>	<b>3</b>	<b>0</b>	<b>4</b>	

MARINE CORPS TOTAL					
UNITS	DEPLOYED	COMMITTED	RETURNED (W/IN 60 DAYS)	OPS/ LOCAL TRNG	
<b>24</b>	<b>6</b>	<b>5</b>	<b>2</b>	<b>11</b>	

UNCLASSIFIED

I MEF				
EXERCISE	DATE	LOCATION	UNITS	REMARKS
WTI 1-98	14 SEP - 31 OCT	MCAS, YUMA, AZ	DETS FROM: 3D MAW; 1ST MARDIV; CSSD-16	Aviation weapons and tactics instructor training
CAX 1-98	1-27 OCT	MCAGCC, 29 PALMS, CA	CE: 7TH MAR GCE: 1/7 ACE: MAG-13 CSSE: CSSD-18	Combined Arms Exercise
DESFIREX	20 SEP - 9 OCT	MCAGCC, 29 PALMS, CA	DETS FROM: 1ST MARDIV; 11TH MARINES; 3D MAW; AND CSSD-17	1st MarDiv Combined Arms Live Fire Exercise
MCCRES	14 - 31 OCT	INDIAN SPRINGS, NV	DET, HMM-163	Marine Corps Combat Readiness Evaluation System
II MEF				
EXERCISE	DATE	LOCATION	UNITS	REMARKS
DUTCH BILAT 3-97	12 - 27 SEP	CURACAO, WEST INDIES	DET, SC CO, 2D MARDIV	Bilateral exchange, conducting small unit tactics training with the Royal Netherlands Marines
MOUNTAIN WARFARE 8-97	9 SEP - 04 OCT	BRIDGEPORT, CA	1/6; DET, 2D CEB; DET, HMM-266; DET, MWSG-27; DET, MWSS-273	Unit Summer mountain warfare trng rotation
WTI 1-98	9 SEP - 31 OCT	MCAS YUMA, AZ	DETS FROM: MAG-14; MAG-29; MAG-31	Aviation weapons and tactics instructor training
EXPRESS SWORD 1-98	01 - 21 OCT	FT BRAGG, NC	CE: 10TH MAR; HQ BTRY, 2/10 1/10(-)(REIN); 2/10(-)(REIN); 5/10(-)(REIN); 2D MAR, CE; LARBN, CE; 1/6, CE; 1/8, CE; CSSD-25, CE	Live Fire Exercise
LONESTAR 1-98	1 - 15 OCT	SAN ANTONIO, TX	DET, VMGR-152	Joint Task Force Exercise (JTFEX) with US Army
III MEF				
EXERCISE	DATE	LOCATION	UNITS	REMARKS
FUJI 6-97	14 AUG - 30 SEP	CAMP FUJI, JAPAN	C BTRY, 1/12(-); CAB(-); WPNS CO(-), 2/3	Conducting live fire and maneuver trng
FUJI 1-98	1 OCT - 30 OCT	CAMP FUJI, JAPAN	3/4	Conducting live fire and maneuver trng

UNCLASSIFIED

EXERCISES  
970926

UNCLASSIFIED

FOAL EAGLE 97	25 OCT - 4 NOV	VIC TOK SOK RI, ROK	CE: 31ST MEU GCE: 2/3 (REIN) ACE: HMM-262 (REIN) CSSE: MSSG-31 DET:4TH ASLT AMPHIB BN	Providing Amphibious Landing Force utilizing 2/3 and active duty and Reserve Augments
---------------	-------------------	------------------------	---	---

SECRET

# MEU DEPLOYMENTS

1997

1998

11TH

13TH

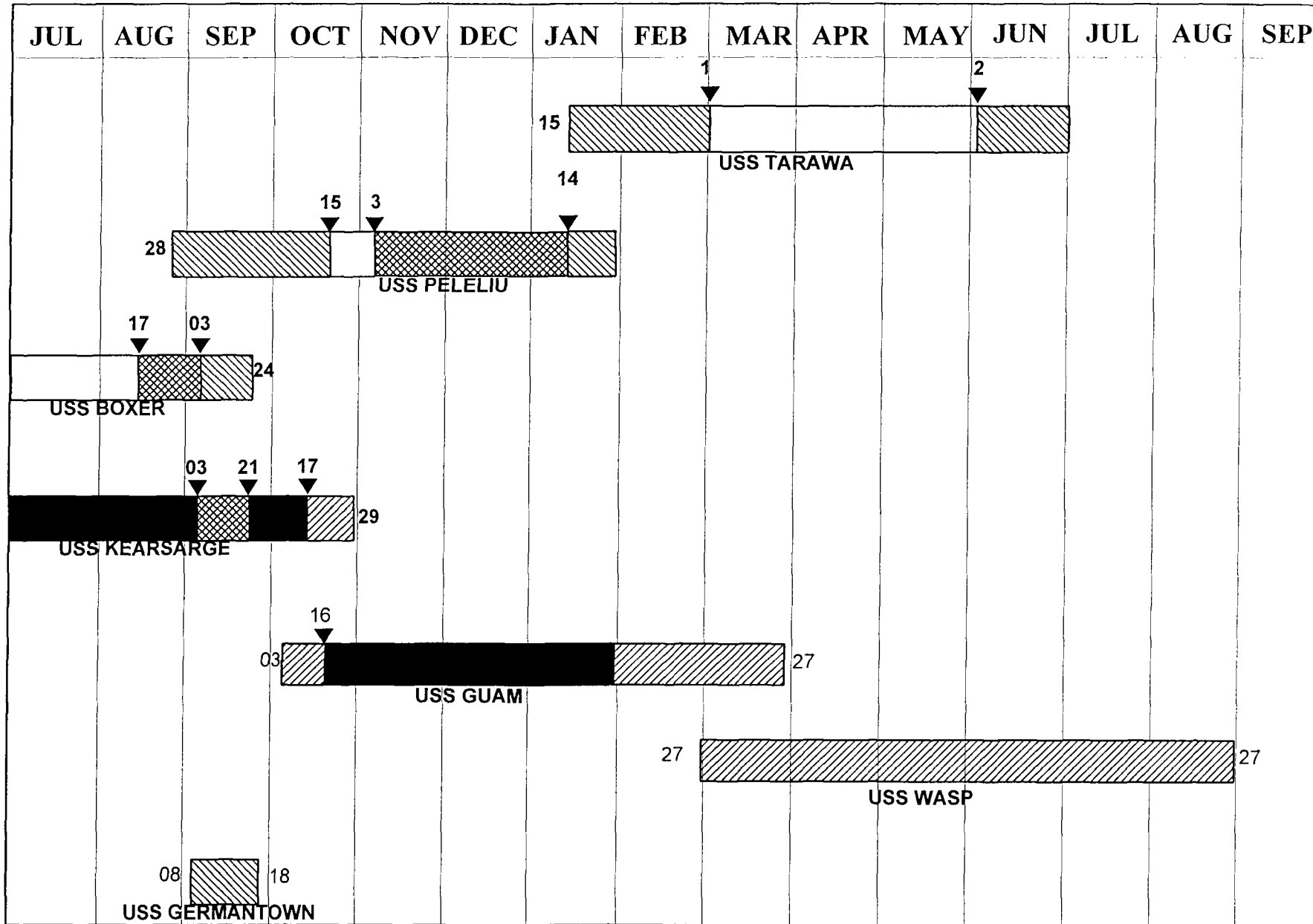
15TH

22D

24TH

26TH

31ST



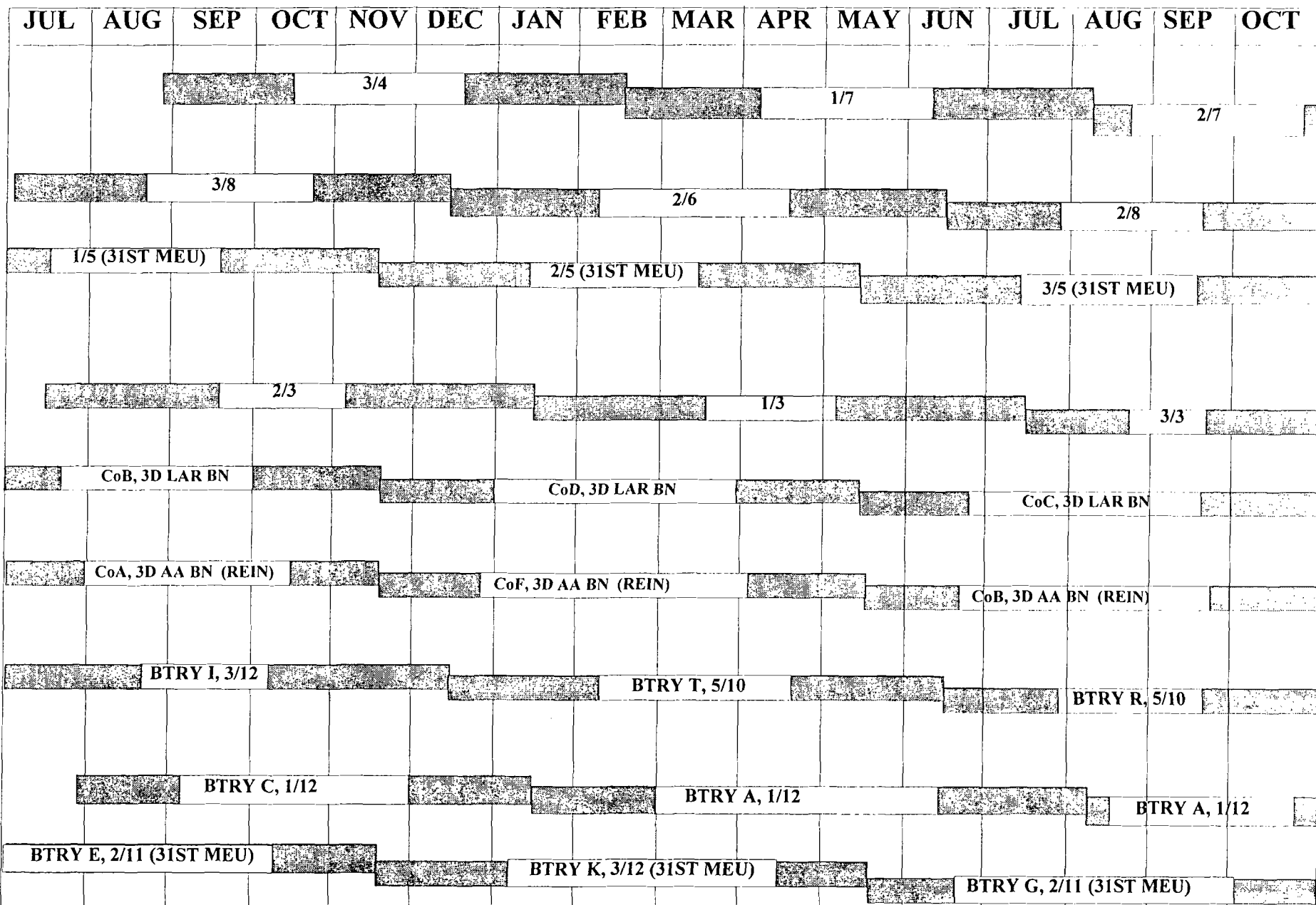
EUCOM    
  CENTCOM    
  USACOM    
  PACOM

EUCOM TETHER    
  CENTCOM TETHER

# GROUND UNIT DEPLOYMENT PROGRAM

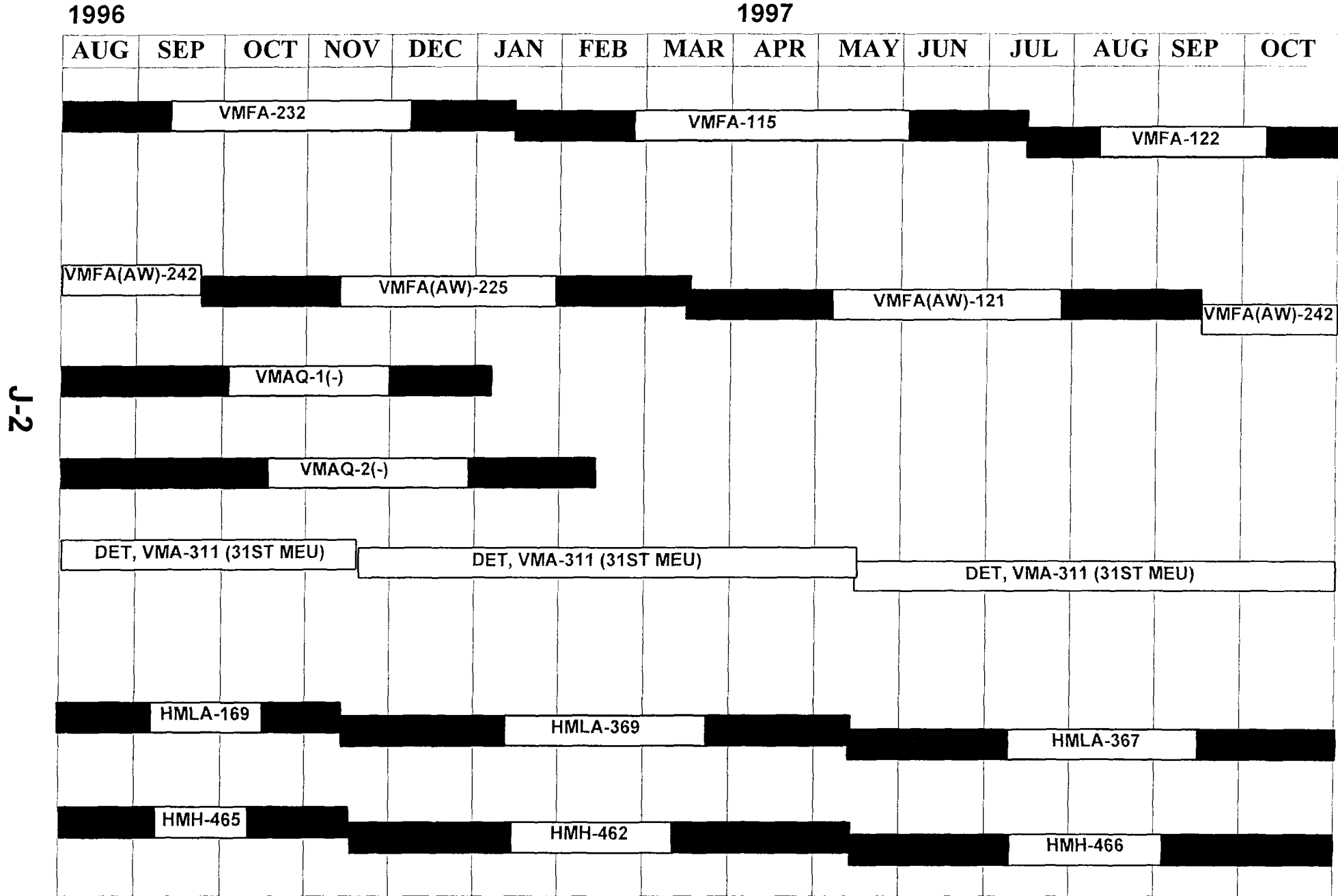
1997

1998



J-1

# AVIATION UNIT DEPLOYMENT PROGRAM





**SECRET**  
CARRIER DEPLOYMENT SCHEDULE

97b25

CARRIER	HULL #	PAC/LANT	AOR	DHPO	TETHER IN	CHOP IN	CHOP OUT	TETHER OUT	RHPO	USMC TACAIR	COMMENTS
VINSON	CVN-70	PAC	CENTCOM	96/05/14	96/06/04	96/06/28	96/09/30	96/10/24	96/11/14		HPT SHIFT ALAMEDA-BREM FY96
ENTERPRISE	CVN-65	LANT	MED CENTCOM	96/06/30 N/A	96/07/06 N/A	96/07/12 96/10/20	96/12/10 96/11/28	N/A N/A	96/12/23 N/A		INCHOPPED CENTCOM 14 SEP DUE TO TENSIONS IN GULF
KITTY HAWK	CV-63	PAC	CENTCOM	96/10/11	96/11/01	96/11/25	97/02/25	97/03/21	97/04/11		
ROOSEVELT	CVN-71	LANT	MED CENTCOM	96/11/26 N/A	96/12/01 N/A	96/12/08 97/03/16	97/05/13 97/04/24	N/A N/A	97/05/22 N/A	VMFA-312	
KENNEDY	CVN-67	LANT	MED CENTCOM	97/04/30 N/A	97/05/05 N/A	97/05/13 97/08/17	97/10/17 97/09/25	N/A N/A	97/10/29 N/A		
CONSTELLATION	CV-64	PAC	CENTCOM	97/04/01	97/04/22	97/05/16	97/08/17	97/09/10	97/10/01	VMFA-323	
NIMITZ	CVN-68	PAC	CENTCOM	97/09/01	97/09/22	97/10/16	98/02/07		98/03/01	VMFA-314	
WASHINGTON	CVN-73	LANT	MED CENTCOM	97/10/03		97/10/16 98/02/07	98/03/23 98/03/16		98/04/03	VMFA-251	
STENNIS	CVN-74	LANT PAC	MED CENTCOM	98/02/26		98/03/11 98/05/16	98/05/16 98/07/13		98/08/26		
LINCOLN	CVN-72	PAC	CENTCOM	98/05/28		98/07/13	09/10/14		98/11/28		
EISENHOWER	CVN-69	LANT	MED CENTCOM	98/06/10		98/06/23 98/10/14	98/11/27 98/11/17		98/12/09		
VINSON	CVN-70	PAC	CENTCOM	98/11/06		98/12/20	99/03/23		99/05/06		
ENTERPRISE	CVN-65	LANT	MED CENTCOM	98/11/13		98/11/26 99/03/23	99/05/01 99/04/23		99/05/12		
<b>PROPOSED 99-00 SCHEDULE</b>											
ROOSEVELT	CVN-71	LANT	MED CENTCOM	99/04/14		99/04/27 99/06/08	99/10/02 99/07/23		99/10/13	VMFA-312	
KITTY HAWK	CV-63	PAC	CENTCOM	99/07/13		99/08/27	99/11/30		00/01/13		
WASHINGTON	CVN-73	LANT	MED CENTCOM	99/09/17		99/09/30 99/12/13	00/03/05 00/01/22		00/03/16	VMFA-251	
STENNIS	CVN-74	PAC	CENTCOM	00/01/31		00/03/16	00/06/16		00/07/31		
EISENHOWER	CVN-69	LANT	MED CENTCOM	00/02/18		00/03/02 00/06/16	00/08/06 00/07/24		00/09/17		
TRUMAN	CVN-75	LANT	MED CENTCOM	00/07/20		00/08/02 00/08/12	01/01/08 00/09/11		01/01/19		
LINCOLN	CVN-72	PAC	CENTCOM	00/08/12		00/09/26	00/12/29		01/02/12		

UNCLASSIFIED

INFANTRY BATTALIONS					
4TH MARINES					
CAMP SCHWAB			CAMP HANSEN		
UNIT	SOURCE	DATE	UNIT	SOURCE	DATE
3/8	8TH MAR	JUN-DEC 97	2/3	3D MAR	JUL 97-JAN 98
3/4	4TH MAR	AUG 97-FEB 98 JUN-DEC 97	1/5 (31ST MEU)	5TH MAR	MAY - NOV 97
FIXED -WING / ROTARY-WING SQUADRONS					
IWAKUNI			OKINAWA		
MAG-12			MAG-36		
UNIT	SOURCE	DATE	UNIT	SOURCE	DATE
VMFA-232	MAG-11	JUL 97 - JAN 98	HMH-465	MAG-16	MAY - NOV 97
VMFA(AW)-225	MAG-11	SEP 97 - MAR 98	HMLA-169	MAG-39	MAY - NOV 97
DET VMA-311	MAG-13	MAY - NOV 97			
MARFORRES					
INFANTRY BATTALION					
SAN RAFAEL, CA		KANSAS CITY, MO		WORCESTER, MA	
23D MARINES		24TH MARINES		25TH MARINES	
1/23	HOUSTON TX	1/24	DETROIT MI	1/25	CAMP EDWARDS MA
2/23	ENCINO CA	2/24	CHICAGO IL	2/25	GARDEN CITY NY
3/23	NEW ORLEANS LA	3/24	BRIDGETON MO	3/25	BROOKPARK OH
FIXED-WING SQUADRONS					
DALLAS			MARIETTA		
MAG-41			MAG-42		
VMA-124	DALLAS TX	VMFA-142	CECIL FIELD FL		
VMFA-112	DALLAS TX	WILLOW GROVE			
VMGR-234	FT WORTH TX	MAG-49			
MIRAMAR			VMA-131	WILLOW GROVE PA	
MAG-46			VMFA-321	ANDREWS AFB MD	
VMFA-134	MIRAMAR CA	VMGR-452	NEWBURGH NY		
VMFT-401	YUMA AZ				
ROTARY WING SQUADRON					
MARIETTA		MIRAMAR		WILLOW GROVE	
MAG-42		MAG-46		MAG-49	
HMLA-775, DET A	BELLE CHASSE LA	HMLA-775	CAMPEN CA	HMH-772	WILLOW GROVE PA
HMM-774	NORFOLK VA	HMM-764	EL TORO CA		
HMLA-773	MARIETTA GA	HMH-769	NAS ALAMEDIA		
* CURRENT UDP UNIT @ OPERATIONAL DEPLOYMENT # MEU MSE ! MEU COMPONENT \$ CH-53D SQDN ^ 6 A/C ISO 31ST MEU + CARRIER INTEGRATION & UDP IN SUPPORT OF 31ST MEU % TEMPORARY UNTIL DIR TO PCS TO MIRAMAR					

UNCLASSIFIED

UNCLASSIFIED

INFANTRY BATTALIONS						
CAMP PENDLETON		29 PALMS		CAMP LEJEUNE		HAWAII
1ST MAR	5TH MAR	7TH MAR	2D MAR	6TH MAR	8TH MAR	3D MAR
1/1# (13th MEU)	1/5&	1/7	1/2# (22d MEU)	1/6	1/8	1/3
2/1	2/5& (ADV PARTY)	2/7	2/2	2/6	2/8	2/3*
3/1	3/5	3/7	3/2# (26th MEU)	3/6# (24th MEU)	3/8*	3/3
1/4# (11th MEU)	2/4	3/4* (CAMPEN)				

ARTILLERY BATTALIONS									
11TH MAR				10TH MAR			12TH MAR		
CAMP PENDLETON		29 PALMS		CAMP LEJEUNE		HAWAII		OKINAWA	
BN	BTRY	BN	BTRY	BN	BTRY	BN	BTRY	BN	BTRY
1/11	A#, B, C#	3/11	I, K, L	1/10	A#, B, C	1/12	A, B, C*	3/12	I
2/11	E&, F, G			2/10	E, F, G			2/11	E&
5/11	R#, S# T, K 3/12			3/10	I#, K#, L			5/10	S
				5/10	R, S, T, I 3/12*			1/12	C*

FIXED-WING SQUADRONS					
MIRAMAR	EL TORO	YUMA	CHERRY PT	BEAUFORT	FUTENMA
MAG-11	MAG-11	MAG-13	MAG-14	MAG-31	MAG-36
VMFA(AW)-121	VMFAT-101	VMA-211!	VMAQ-1@	VMFA-115	VMGR-152
VMFA(AW)-225*	VMGR-352!	VMA-214!	VMAQ-2@	VMFA-122	
VMFA(AW)-242		VMA-311!^	VMAQ-3	VMFA-251+	
VMFA-232*		VMA-513!	VMAQ-4	VMFA-312	
VMFA-323+		VMU-1@	VMA-223!	VMFA(AW)-224	
VMFA-314+			VMA-231!	VMFA(AW)-332	
			VMA-542!	VMFA(AW)-533	
			VMGRT-253		IWAKUNI
			VMAT-203		MAG-12
			VMGR-252!		VMFA-212
			VMU-2@		

ROTARY- WING SQUADRONS							
CAMP PENDLETON	TUSTIN		EL TORO	NEW RIVER		FUTENMA	HAWAII
MAG-39	MAG-16		MAG-16	MAG-26	MAG-29	MAG-36	1ST MAW
HMLA-169&#!	HMM-268#	HMH-462!	%HMM-161#	HMLA-167!	HMLA-269	HMM-262&	HMH-362\$
HMLA-267	HMH-361	HMH-465&#!	%HMM-163	HMM-261#	HMM-162	HMM-265	HMH-363\$
HMLA-367!	HMM-165	HMH-466!	%HMM-164#	HMM-264#	HMM-263#		HMH-366\$
HMLA-369!			%HMM-166	HMM-266	HMM-365		HMH-463\$
HMT-303			HMM-364	HMH-461!	HMH 464		HMT-301\$
				HMT-204	HMT-302		

UNCLASSIFIED

## AMPHIB HOMEPORTS AND DEPLOYMENT W/O MARINES

NORFOLK, VA  
USS WASP (LHD-1)  
USS KEARSARGE (LHD-3)  
USS NASSAU (LHA-4)  
USS CARTER HALL (LSD-50)  
USS GUAM (LPH-9)  
USS JUNEAU (LPD-10)  
USS SHREVEPORT (LPD-12)  
USS NASHVILLE (LPD-13)  
USS PONCE (LPD-15)  
USS TRENTON (LPD-14)

M

SAN DIEGO, CA  
USS NEW ORLEANS (LPH-11)  
USS PELELIU (LHA-5)  
USS ESSEX (LHD-2)  
USS BOXER (LHD-4)  
USS OGDEN (LPD-5)  
USS CLEVELAND (LPD-7)  
USS DENVER (LPD-9)  
USS ANCHORAGE (LSD-36)  
USS MT VERNON (LSD-39)  
USS FT FISHER (LSD-40)  
USS COMSTOCK (LSD-45)  
USS HARPERS FERRY (LSD-49)

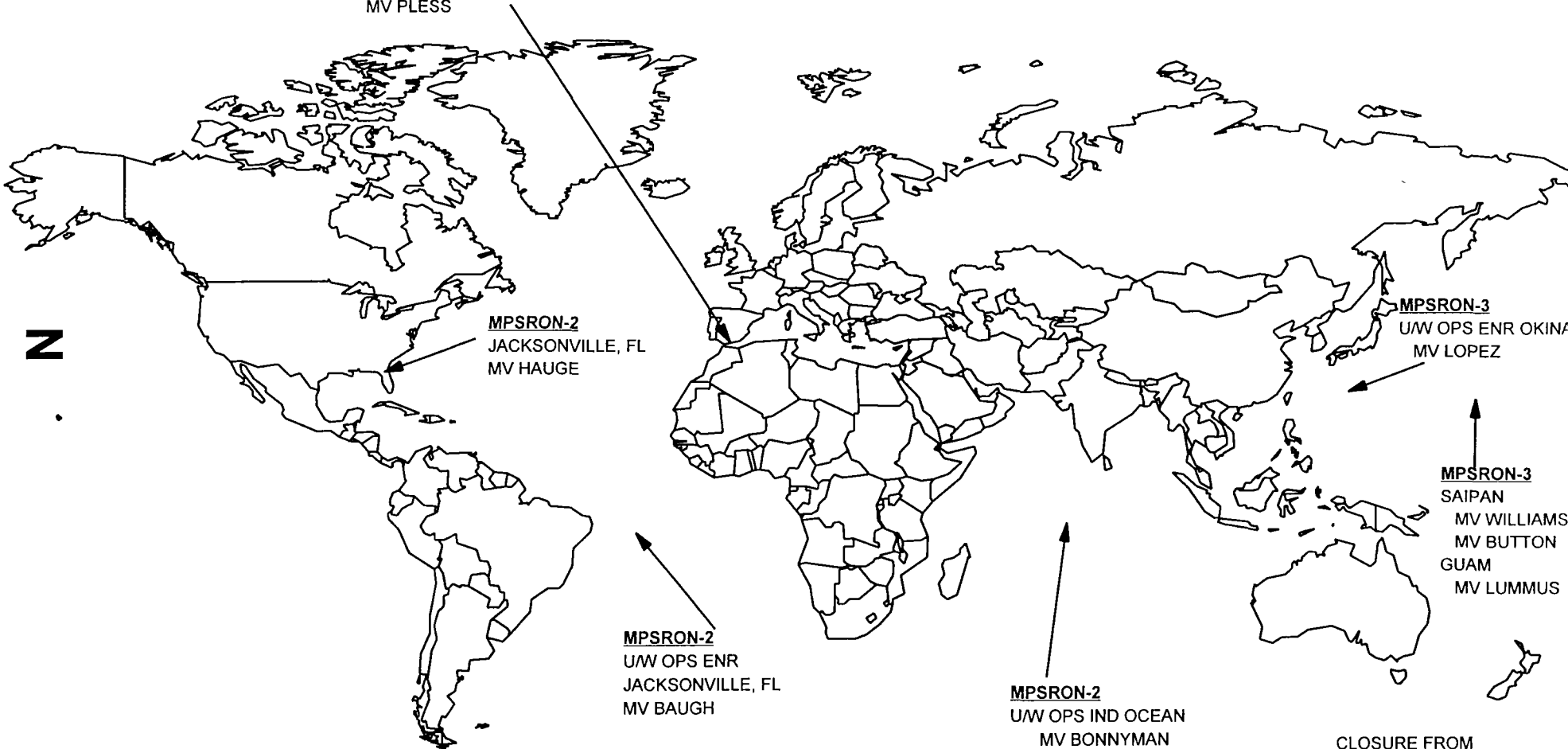
LITTLE CREEK, VA  
USS PORTLAND (LSD-37)  
USS PENSACOLA (LSD-38)  
USS WHIDBEY ISLAND (LSD-41)  
USS ASHLAND (LSD-48)  
USS OAK HILL (LSD-51)

SASEBO, JA  
USS BELLEAU WOOD (LHA-3)  
USS DUBUQUE (LPD-8)  
USS FT MCHENRY (LSD-43)  
USS GERMANTOWN (LSD-42)

MARITIME PREPOSITIONING SHIPS/CLOSURE TIMES TO KEY LOCATIONS (AT 16KTS SOA)  
(ESTIMATED LOCATIONS FOR 260600L SEP 97)

MPSRON-1  
ROTA, SPAIN  
MV KOCAK  
MV OBREGON (ENR)  
PALMA, SPAIN  
MV BOBO  
MV PLESS

CLOSURE FROM	
GUAM/SAIPAN	
PHILIPPINES	4.0 DAYS
KOREA	4.8 DAYS
STR OF HORMUZ	15.5 DAYS
PANAMA CANAL	20.8 DAYS



CLOSURE FROM	
DIEGO GARCIA	
SUEZ CANAL	8.5 DAYS
STR OF HORMUZ	4.0 DAYS
KOREA	13.9 DAYS

<b>MARINE CORPS SECURITY FORCES</b>			
<b>UNIT</b>	<b>LOCATION</b>	<b>OFF</b>	<b>ENL</b>
<b>MARINE CORPS SECURITY FORCE BATTALION</b>			
HQ, MCSFBN (COL J. CALDWELL)	NORFOLK, VA	19	208
FAST COMPANY	NORFOLK, VA	8	303
MCSF TRAINING COMPANY	CHESAPEAKE, VA	8	92
<b>MARINE CORPS SECURITY FORCE COMPANIES</b>			
ASU, BAHRAIN		4	144
KEFLAVIK, ICELAND		2	73
NAPLES, ITALY		2	107
DETACHMENT, SOUDA BAY, CRETE		2	50
ROOSEVELT ROADS, PUERTO RICO(SEBANA SECA)		2	32
ROTA, SPAIN		2	58
LONDON, UNITED KINGDOM		3	78
NORTH ISLAND, CALIFORNIA		4	211
KINGS BAY, GEORGIA		9	342
PATUXENT RIVER, MARYLAND		2	67
YORKTOWN, VIRGINIA		6	182
BANGOR, WASHINGTON		12	451
<b>MCSF CADRES</b>			
18 OVERSEAS	59 CONUS	2	132
<b>MARINE DETACHMENTS AFLOAT</b>			
USS ABRAHAM LINCOLN (CVN 72)	ALAMEDA, CA	1	20
USS STENNIS (CVN-74)	NORFOLK, VA	1	21
USS CARL VINSON (CVN 70)	ALAMEDA, CA	1	20
USS CONSTELLATION (CV 64)	NORTH ISLAND, CA	1	24
USS ENTERPRISE (CVN-65)	NORFOLK, VA	1	24
USS GEORGE WASHINGTON (CVN 73)	NORFOLK, VA	1	22
USS INDEPENDENCE (CV 62)	YOKOSUKA, JAPAN	1	22
USS JOHN F. KENNEDY (CV 67)	MAYPORT, FL	1	22
USS KITTY HAWK (CV 63)	SAN DIEGO, CA	1	16
USS NIMITZ (CVN-68)	BREMERTON, WA	1	25
USS THEODORE ROOSEVELT (CVN 71)	NORFOLK, VA	0	0
<b>MARINE CORPS SECURITY FORCE BATTALION TOTAL</b>		97	2,746
<b>MARINE BARRACKS</b>			
GUANTANAMO BAY, CUBA	COL R. C. BAMFORD II	21	366
YOKOSUKA, JAPAN	COL W.C. GRUBB, JR.	9	161
8TH AND I, WASHINGTON, DC	COL D.J. HEJLIK	98	1,033
<b>MARINE BARRACKS TOTAL</b>		128	1,560
<b>MCSF BATTALION TOTAL</b>		97	2,746
<b>MARINE CORPS SECURITY FORCES TOTAL</b>		225	4,306

## MARINE CORPS SECURITY GUARD LOCATIONS

UNCLASSIFIED

COUNTRY	CITY	OFF	ENL
HEADQUARTERS COMPANY, QUANTICO, VA		11	91
COUNTRY	CITY	OFF	ENL
COMPANY A, FRANKFURT		3	5
COMMANDING OFFICER	LTCOL MEADE W M		
AUSTRIA	VIENNA	0	20
BULGARIA	SOFIA	0	6
CROATIA	ZAGREB	0	6
CZECH REPUBLIC	PRAGUE	0	10
BERLARUS	MINSK	0	6
GERMANY	FRANKFURT	0	10
GERMANY	BERLIN	0	11
GERMANY	BONN	0	14
GREECE	ATHENS	0	11
HUNGARY	BUDAPEST	0	10
KAZAKHSTAN	ALMATY	0	6
POLAND	WARSAW	0	10
ROMANIA	BUCHAREST	0	6
RUSSIA	ST. PETERSBURG	0	6
RUSSIA	MOSCOW	0	26
SERBIA	BELGRADE	0	7
TURKEY	ISTANBUL	0	8
TURKEY	ANKARA	0	8
UKRAINE	KIEV	0	6
SUBTOTAL		3	192
COUNTRY	CITY	OFF	ENL
COMPANY B, NICOSIA		3	4
COMMANDING OFFICER	LTCOL POMFRET J J		
ALGERIA	ALGIERS	0	6
CYPRUS	NICOSIA	0	8
BAHRAIN	MANAMA	0	7
EGYPT	CAIRO	0	31
ISRAEL	TEL AVIV	0	10
ISRAEL	JERUSALEM	0	8
JORDAN	AMMAN	0	9
KUWAIT	KUWAIT CITY	0	8
MOROCCO	RABAT	0	6
OMAN	MUSCAT	0	6
PAKISTAN	ISLAMABAD	0	8
PAKISTAN	KARACHI	0	7
SAUDI ARABIA	JEDDAH	0	6
SAUDI ARABIA	RIYADH	0	9

## MARINE SECURITY GUARD LOCATIONS

P-1

CONFIDENTIAL

UNCLASSIFIED

## MARINE CORPS SECURITY GUARD LOCATIONS

UNCLASSIFIED

## COMPANY B CON'T

SYRIA	DAMASCUS	0	7
TUNISIA	TUNIS	0	6
UNITED ARAB EMIRATES	ABU DHABI	0	6
YEMEN	SANAA	0	7
<b>SUBTOTAL</b>		<b>3</b>	<b>159</b>
<b>COUNTRY</b>	<b>CITY</b>	<b>OFF</b>	<b>ENL</b>
COMPANY C BANGKOK HQ		3	4
COMMANDING OFFICER	LTCOL COOKE C E		
AUSTRALIA	CANBERRA	0	6
BANGLADESH	DHAKA	0	6
BURMA	RANGOON	0	6
CHINA	BEIJING	0	13
CHINA	SHANGHAI	0	6
HONG KONG		0	9
INDIA	NEW DEHLI	0	12
INDONESIA	JAKARTA	0	10
JAPAN	TOKYO	0	16
MALAYSIA	KUALA LUMPUR	0	6
NEPAL	KATHMANDU	0	6
PHILIPPINES	MANILA	0	10
SINGAPORE	SINGAPORE	0	8
SOUTH KOREA	SEOUL	0	10
SRI LANKA	COLOMBO	0	8
THAILAND	BANGKOK	0	10
<b>SUBTOTAL</b>		<b>3</b>	<b>146</b>
<b>COUNTRY</b>	<b>CITY</b>	<b>OFF</b>	<b>ENL</b>
COMPANY D, FT LAUDERDALE		4	4
COMMANDING OFFICER	LTCOL HITCHCOCK N E		
ARGENTINA	BUENOS AIRES	0	7
BAHAMAS	NASSAU	0	6
BARBADOS	BRIDGETOWN	0	6
BOLIVIA	LA PAZ	0	8
BRAZIL	BRASILIA	0	8
BRAZIL	RIO DE JANEIRO	0	8
BRAZIL	SAO PAULO	0	7
CHILE	SANTIAGO	0	8
COLOMBIA	BOGOTA	0	13
COSTA RICA	SAN JOSE	0	7
CUBA	HAVANA	0	10
DOMINICAN REPUBLIC	SANTO DOMINGO	0	6
ECUADOR	QUITO	0	7

## MARINE SECURITY GUARD LOCATIONS

P-2

CONFIDENTIAL

UNCLASSIFIED



UNCLASSIFIED

## MARINE CORPS SECURITY GUARD LOCATIONS

## COMPANY D CON'T

COUNTRY	CITY	OFF	ENL
EL SALVADOR	SAN SALVADOR	0	14
GUATEMALA	GUATEMALA CITY	0	9
GUYANA	GEORGETOWN	0	0
HAITI	PORT AU PRINCE	0	8
HONDURAS	TEGUCIGALPA	0	12
JAMAICA	KINGSTON	0	6
MEXICO	MEXICO CITY	0	13
NICARAGUA	MANAGUA	0	8
PANAMA	PANAMA CITY	0	7
PARAGUAY	ASUNCION	0	6
PERU	LIMA	0	13
SURINAME	PARAMARIBO	0	0
TRINIDAD	PORT OF SPAIN	0	6
URUGUAY	MONTEVIDEO	0	6
VENEZUELA	CARACAS	0	8
<b>SUBTOTAL</b>		<b>4</b>	<b>221</b>
<b>COUNTRY</b>		<b>OFF</b>	<b>ENL</b>
COMPANY E, FRANKFURT		3	4
COMMANDING OFFICER	LTCOL HOSLER L D		
BELGIUM	BRUSSELS	0	23
CANADA	OTTAWA	0	6
DENMARK	COPENHAGEN	0	6
FINLAND	HELSINKI	0	11
FRANCE	PARIS	0	26
IRELAND	DUBLIN	0	6
ITALY	ROME	0	16
MALTA	VALETTA	0	6
NETHERLANDS	THE HAGUE	0	10
NORWAY	OSLO	0	6
PORTUGAL	LISBON	0	8
SPAIN	MADRID	0	10
SWEDEN	STOCKHOLM	0	6
SWITZERLAND	BERN	0	6
SWITZERLAND	GENEVA	0	8
UNITED KINGDOM	LONDON	0	21
<b>SUBTOTAL</b>		<b>3</b>	<b>179</b>
<b>COUNTRY</b>		<b>OFF</b>	<b>ENL</b>
COMPANY F, NAIROBI		3	4
COMMANDING OFFICER	LTCOL MCCLESKEY		
BOTSWANA	GABORONE	0	6
BURUNDI	BUJUMBURA	0	6

## MARINE SECURITY GUARD LOCATIONS

P-3

CONFIDENTIAL

UNCLASSIFIED

## COMPANY F CON'T

COUNTRY	CITY	OFF	ENL
DJIBOUTI	DJIBOUTI	0	6
ETHIOPIA	ADDIS ABABA	0	6
KENYA	NAIROBI	0	8
MADAGASCAR	ANTANANARIVO	0	0
MOZAMBIQUE	MAPUTO	0	6
SOUTH AFRICA	CAPETOWN	0	6
SOUTH AFRICA	PRETORIA	0	12
SUDAN	KHARTOUM	0	0
TANZANIA	DAR ES SALAAM	0	7
UGANDA	KAMPALA	0	6
ZAMBIA	LUSAKA	0	6
ZIMBABWE	HARARE	0	6
<b>SUBTOTAL</b>		<b>3</b>	<b>85</b>
<b>COUNTRY</b>		<b>OFF</b>	<b>ENL</b>
COMPANY G, ABIDJAN		3	4
COMMANDING OFFICER	LTCOL WALKER M W		
CAMEROON	YAOUNDE	0	6
CHAD	N'DJAMENA	0	6
CONGO	BRAZZAVILLE	0	0
GHANA	ACCRA	0	6
GUINEA	CONAKRY	0	6
IVORY COAST	ABIDJAN	0	6
LIBERIA	MONROVIA	0	7
MALI	BAMAKO	0	6
NIGER	NIAMEY	0	6
NIGERIA	LAGOS	0	11
SENEGAL	DAKAR	0	7
SIERRA LEONE	FREETOWN	0	0
TOGO	LOME`	0	6
DEMOCRATIC REPUBLIC OF CONGO	KINSHASA	0	6
<b>SUBTOTAL</b>		<b>3</b>	<b>83</b>
HEADQUARTERS CO, QUANITICO, VA		11	91
COMPANY A FRANKFURT		3	192
COMPANY B NICOSIA		3	159
COMPANY C BANGKOK		3	146
COMPANY D , FT LAUDERDALE		4	221
COMPANY E FRANKFURT		3	179
COMPANY F NAIROBI		3	85
COMPANY G ABIDJAN		3	83
<b>TOTAL</b>		<b>39</b>	<b>1,156</b>

UNCLASSIFIED

UNIT	RANK	NAME	HOME LOCATION
<b>MARFORPAC</b>			
<b>MARFORPAC</b>	LTGEN	HOWELL JR J D	CAMP SMITH HI
VICE COMMANDER	MAJGEN	HOLLINGSWORTH BG	CAMP SMITH HI
DEPUTY COMMANDER	BGEN	PARKER JR R E.	CAMP SMITH HI
C/S	COL	OLSON M L	CAMP SMITH HI
HQSVC BN	COL	MURRAY S E	CAMP SMITH HI
USMARCENT	COL	HOUSTON D P	MACDILL AFB
USMARFORK	COL	PARKER R E	KOREA
1ST RADIO BN	COL	BRUDER IV J A	MCB KBAY HI
<b>I MEF</b>			
<b>I MEF</b>	LTGEN	FULFORD JR C W	MCB CAMPEN CA
DEPCDR	MAJGEN	BOLDEN JR C F	MCB CAMPEN CA
C/S	COL	MCABEE J C	MCB CAMPEN CA
<b>1ST SRI GROUP</b>	COL	THOMAS J R	MCB CAMPEN CA
HQSVC CO	LTCOL	BICKHAM E	MCB CAMPEN CA
1ST ANGLICO (-)	LTCOL	BRIGHT R T	MCB CAMPEN CA
1ST INTEL CO	LTCOL	TRAFTON D E	MCB CAMPEN CA
9TH COMM BN	LTCOL	BROOKS T E	MCB CAMPEN CA
1ST FORECON CO	LTCOL	THOMAS J M	MCB CAMPEN CA
<b>11TH MEU</b>	COL	MOORE JR T L	MCB CAMPEN CA
BLT 3/1	LTCOL	DONIGAN H	MCB CAMPEN CA
HMM-166 (REIN)	LTCOL	WILLIAMS D G	MCP CAMPEN CA
MSSG-11	LTCOL	LIEBER M C	MCB CAMPEN CA
<b>13TH MEU</b>	COL	HEIDRICH J W	MCB CAMPEN CA
BLT 1/1	LTCOL	HUMMER S A	MCB CAMPEN CA
HMM-164 (REIN)	LTCOL	O'DONOGUE P M	EL TORO CA
MSSG-13	LTCOL	SCHUCHARDT C P	MCB CAMPEN CA
<b>15TH MEU(SOC)</b>	COL	ZILMER, R C	MCB CAMPEN CA (D)
BLT-2/1	LTCOL	INGHRAM J D	MCB CAMPEN CA (D)
HMM-161(REIN)	LTCOL	HASLAM A M	EL TORO CA (D)
MSSG-15	LTCOL	GODFREY M J	MCB CAMPEN CA (D)
<b>1ST MARDIV</b>	MAJGEN	ADMIRE J H	MCB CAMPEN CA
DEPUTY COMMANDER	BGEN	CORTEZ C	MCB CAMPEN CA
C/S	COL	STUDENKA J M	MCB CAMPEN CA
HQBN, 1ST MARDIV	COL	MILLER G W	MCB CAMPEN CA
1ST CBT ENGR BN	LTCOL	WENDEL J	MCB CAMPEN CA
1ST TANK BN	LTCOL	HAWKINS M	MCAGCC 29PALMS CA
3D LAR BN	LTCOL	GARZA D	MCAGCC 29PALMS CA
3D AAV BN	LTCOL	WAGNER G	MCB CAMPEN CA
1ST LAR BN	LTCOL	SWARD T B	MCB CAMPEN CA

FMF COMMANDERS AND LOCATIONS

Q-1

UNCLASSIFIED

UNCLASSIFIED

UNCLASSIFIED

UNIT	RANK	NAME	HOME LOCATION
<b>1ST MARINES</b>	COL	MCALEER R T	MCB CAMPEN CA
1ST BN, 4TH MAR	LTCOL	HOPPER H	MCB CAMPEN CA
<b>5TH MARINES</b>	COL	BROOKS M	MCB CAMPEN CA
1ST BN, 5TH MAR	LTCOL	BOGGS JR J T	MCB CAMPEN CA (D)
2D BN, 4TH MAR	LTCOL	HAND P	MCB CAMPEN CA (D)
2D BN, 5TH MAR	LTCOL	LINNEBUR D	MCB CAMPEN CA
3D BN, 5TH MAR	LTCOL	O'KEEFE K	MCB CAMPEN CA
<b>7TH MARINES</b>	COL	WALSH J P	MCAGCC 29PALMS CA
1ST BN, 7TH MAR	LTCOL	JOHNSON M	MCAGCC 29PALMS CA
2D BN, 7TH MAR	LTCOL	NAVARRE R S	MCAGCC 29PALMS CA
3D BN, 4TH MAR	LTCOL	HOLLAR O L	MCB CAMPEN CA
3D BN, 7TH MAR	LTCOL	LAUER G S	MCAGCC 29PALMS CA (D)
<b>11TH MARINES</b>	COL	WEBER J F	MCB CAMPEN CA
1ST BN, 11TH MAR	LTCOL	KARCHER D	MCB CAMPEN CA
2D BN, 11TH MAR	LTCOL	MARLETTO M P	MCB CAMPEN CA
3D BN, 11 TH MAR	LTCOL	PINO G	MCAGCC 29PALMS CA
5TH BN, 11TH MAR	LTCOL	CASPERS J	MCB CAMPEN CA
<b>3D MAW</b>	MAJGEN	McCORKLE F	MCAS EL TORO CA
AWC	BGEN	WHITLOW W A	NAS MIRAMAR CA
C/S	COL	OUTLAW L D	EL TORO CA
MWHS-3	LTCOL	WEIGL O W	MCAS EL TORO CA
<b>MWSG-37</b>	COL	BLACKLEDGE M W	MCAS EL TORO CA
AGSE-173	LTCOL	NICHOLS J D	MCAGCC 29PALMS CA
MWSS-371	LTCOL	COULTER A	MCAS YUMA AZ
MWSS-372	LTCOL	STAPLES E L	MCAS CAMPEN CA
MWSS-373	LTCOL	FREED G H	MCAS EL TORO CA
MWSS-374	LTCOL	BREAULT C G	MCAS TUSTIN CA
<b>MACG-38</b>	COL	CAVAZOS E	MCAS EL TORO CA
MACS-1	LTCOL	MINGO R	MCAS CAMPEN CA
MACS-7	LTCOL	LOFTIS D M	MCAS YUMA AZ
MATCS-38	LTCOL	DYROFF S J	MCAS EL TORO CA
MWCS-38	LTCOL	HOEY K A	MCAS EL TORO CA
MASS-3	LTCOL	WASHINGTON C	MCAS CAMPEN CA
1ST LAAM BN	LTCOL	MCLAWHORN D W	MCAS YUMA AZ
3D LAAD BN	LTCOL	MATTOS S H	MCAS CAMPEN CA
<b>MAG-11</b>	COL	COLLINS II J M	NAS MIRAMAR CA
PSD-11	MAJ	RHODES G J	NAS MIRAMAR CA
MALS-11	LTCOL	HORSTMAN G H	NAS MIRAMAR CA
VMFA-314	LTCOL	PEELER D H	NAS MIRAMAR CA

FMF COMMANDERS AND LOCATIONS

Q-2

UNCLASSIFIED

UNCLASSIFIED

UNCLASSIFIED

UNIT	RANK	NAME	HOME LOCATION
VMFA-323	LTCOL	PRIEST R W	NAS MIRAMAR CA
VMFA(AW)-121	LTCOL	MACAK W C	NAS MIRAMAR CA
VMGR-352	LTCOL	BADER B J	MCAS EL TORO CA
VMFAT-101	LTCOL	GRAHAM R G	MCAS EL TORO CA
VMFA(AW)-242	LTCOL	CHAMPION K A	NAS MIRAMAR CA (D)
VMFA(AW)-225	LTCOL	STOCKWELL H A	NAS MIRAMAR CA
VMFA-232	LTCOL	MITCHELL C F	NAS MIRAMAR CA
<b>MAG-13</b>	COL	THIESSEN D	MCAS YUMA AZ
MALS-13	LTCOL	JUNETTE T	MCAS YUMA AZ
PSD-13	CAPT	FORCUM L E	MCAS YUMA AZ
VMA-211	LTCOL	KREJMAS J J	MCAS YUMA AZ
VMA-311	LTCOL	BOLIN M	MCAS YUMA AZ
VMA-214	LTCOL	SIDERS R	MCAS YUMA AZ
VMA-513	LTCOL	BICK D W	MCAS YUMA AZ
VMU-1	MAJ	WARNER G	MCAS YUMA AZ
<b>MAG-16</b>	COL	LEMOINE J A	MCAS TUSTIN CA
PSD-16	MAJ	DEAMON D	MCAS TUSTIN CA
HMM-163	LTCOL	FOX R C	MCAS EL TORO CA
HMM-165	LTCOL	RASMUSSIN R M	MCAS EL TORO CA
HMM-268	LTCOL	ENOCH JR J T	MCAS EL TORO CA
HMM-364	LTCOL	YINGLING G	MCAS EL TORO CA
HMH-361	LTCOL	FLEMING R A III	MCASTUSTIN CA
HMH-462	LTCOL	PAGE J E	MCAS TUSTIN CA
HMH-465	LTCOL	DOYLE S A	MCAS TUSTIN CA (D)
HMH-466	LTCOL	CROISETIERE P	MCAS TUSTIN CA
MALS-16	LTCOL	PEECOCK M S	MCAS TUSTIN CA
<b>MAG-39</b>	COL	ROGERS J D	MCB CAMPEN CA
PSD-39	MAJ	WEST W C	MCB CAMPEN CA
MALS-39	LTCOL	SCHULTZ M G	MCB CAMPEN CA
HMLA-169	LTCOL	MILLS S E	MCB CAMPEN CA (D)
HMLA-367	LTCOL	CALDWELL G W	MCB CAMPEN CA
HMLA-369	LTCOL	GARDINER K P	MCB CAMPEN CA
HMLA-267	LTCOL	GRIFFIN T W	MCB CAMPEN CA
HMT-303	LTCOL	WALTERS G M	MCB CAMPEN CA
<b>1ST FSSG</b>	BGEN	KELLY R L	MCB CAMPEN CA
C/S	COL	COLLENBORNE G N	MCB CAMPEN CA
1ST FSSG (FWD)	COL	HEAD J W	MCB CAMPEN CA
HQSVC BN(-)	LTCOL	FONTAINE G P	MCB CAMPEN CA
1ST MAINT BN(-)	LTCOL	DODD S P	MCB CAMPEN CA
7TH MT BN(-)	LTCOL	WHELEHAN D L	MCB CAMPEN CA

## FMF COMMANDERS AND LOCATIONS

Q-3

UNCLASSIFIED

UNCLASSIFIED

UNCLASSIFIED

UNIT	RANK	NAME	HOME LOCATION
1ST SUPPLY BN(-)	COL	DAVIS J G	MCB CAMPEN CA
7TH ENGR SPT BN	LTCOL	HARBISON J E	MCB CAMPEN CA
1ST LANDING SPT BN	LTCOL	REIST D	MCB CAMPEN CA
1ST DENTAL BN	CAPT	TURNER C I (USN)	MCB CAMPEN CA
1ST MEDICAL BN	CDR	SORENSEN A L (USN)	MCB CAMPEN CA
CSSG-1	COL	O'DONOVAN J A	MCAGCC 29PALMS CA
CSS DET-14	MAJ	LAMSON C A	MCAS EL TORO CA
CSS DET-16	MAJ	TATUM S P	MCAS YUMA AZ
III MEF			
<b>III MEF</b>	LTGEN	LIBUTTI F	CAMP COURTNEY
DEPCG	BGEN	KRUPP D T	CAMP COURTNEY
C/S	COL	CLANCEY D E	CAMP COURTNEY
H&S BN III MEF	COL	ANDERSON G W	CAMP HANSEN
7TH COMM BN	LTCOL	FEBUARY W S	CAMP HANSEN
<b>31ST MEU</b>	COL	HICKS F W	CAMP HANSEN
1ST BN, 5TH MAR	LTCOL	BOGGS J T JR	CAMP HANSEN
HMM-262	LTCOL	HARDEE W E	MCAS FUTENMA
MSSG-31	LTCOL	CHANDLER J W	CAMP KINSER
<b>3D MARDIV</b>	MAJGEN	MCCARTHY D M	CAMP COURTNEY
C/S	COL	SUPKO L M	CAMP COURTNEY
HQ BN, 3D MARDIV	COL	SPENCER W Y	CAMP COURTNEY
COMBAT ASSAULT BN	LTCOL	HOWARD JR J D	CAMP SCHWAB
<b>3D MARINES</b>	COL	KEENAN J	MCB KBAY HI
1ST BN, 3D MAR	LTCOL	GREGORY T E	MCB KBAY HI
1ST BN, 12TH MAR	LTCOL	LANCE J	MCB KBAY HI
3D BN, 3D MAR	LTCOL	SPOSATO L P	MCB KBAY HI
<b>4TH MARINES</b>	COL	LARSEN T	CAMP SCHWAB
2D BN, 3D MAR	LTCOL	BATES J R	CAMP SCHWAB
3D BN, 4TH MAR	LTCOL	HOLLAR O L	CAMP SCHWAB
3D BN, 8TH MAR	LTCOL	LEFEBVRE P E	CAMP SCHWAB
<b>12TH MARINES</b>	COL	KELLY T R	CAMP FOSTER
3D BN, 12TH MAR	LTCOL	BARILE D J	CAMP FOSTER
<b>3D FSSG</b>	BGEN	HUGHEY G H	CAMP KINSER
C/S	COL	DOWDEN JR F G	CAMP KINSER
HQSVC BN	COL	ANDERSON S D	CAMP KINSER
3D MAINT BN(-)	LTCOL	AITKEN W	CAMP KINSER
3D SUPPLY BN(-)	COL	BORGERT G D	CAMP KINSER
3D SPT BN	COL	LOTT B M	CAMP FOSTER
9TH ENGR SPT BN	LTCOL	SMITH R J	CAMP HANSEN
3D MEDICAL BN	CAPT	LUNDY J A (USN)	CAMP HANSEN
3D DENTAL BN	CAPT	TURNER R J (USN)	CAMP FOSTER

FMF COMMANDERS AND LOCATIONS

Q-4

UNCLASSIFIED

UNCLASSIFIED

UNCLASSIFIED

UNIT	RANK	NAME	HOME LOCATION
CSSD-36	LTCOL	FELDER T J	MCAS IWAKUNI
CSSG-3	COL	SKIPPER C O	MCB KBAY HI
MSSG-31	LTCOL	CHANDLER J W	CAMP KINSER
<b>1ST MAW</b>	MAJGEN	KNUTSON JR B B	CAMP BUTLER
AWC	COL	KING T R	CAMP BUTLER
C/S	COL	BOWLING W L	CAMP BUTLER
MWHS-1	LTCOL	GRAHAM J C	CAMP FOSTER
<b>MAG-12</b>	COL	DAVIS JR C E	MCAS IWAKUNI
MALS-12	LTCOL	FOREMAN S H	MCAS IWAKUNI
VMFA-212	LTCOL	GUILFOYLE W F	MCAS IWAKUNI
VMFA-232	LTCOL	MITCHELL C F	NAS MIRAMAR CA
VAQ-138	CDR	SMOLANA K V	MCAS IWAKUNI
VMFA(AW)-242	LTCOL	CHAMPION K A	NAS MIRAMAR CA (D)
MWSG-17	COL	LEHNER W E	CAMP FOSTER
MWSS-171	LTCOL	ANDERSON B C	MCAS IWAKUNI
MWSS-172	LTCOL	STAWICHI L P	MCAS FUTENMA
MACG-18	COL	ANDERSON J	MCAS FUTENMA
MTACS-18	LTCOL	GRIMES J M	MCAS FUTENMA
1ST STINGER BATTERY	MAJ	WILLIAMS T M	MCAS FUTENMA
MACS-4	LTCOL	KINNERUP III J J	MCAS FUTENMA
MASS-2	LTCOL	HILL R L	MCAS FUTENMA
MWCS-18	LTCOL	MULCAHY S T	CAMP FOSTER
DET VMA-311	LTCOL	REIF C W	MCAS IWAKUNI
<b>MAG-36</b>	COL	HILL K W	MCAS FUTENMA
MALS-36	LTCOL	KATZ E S	MCAS FUTENMA
VMGR-152	LTCOL	PAIS A B	MCAS FUTENMA
HMH-465	LTCOL	DOYLE S A	MCAS TUSTIN CA (D)
HMLA-169	LTCOL	MILLS S E	MCB CAMPEN CA (D)
HMM-265	LTCOL	JAMES J W	MCAS FUTENMA
<b>III MEF FORCES HI</b>	BGEN	BICE D F	MCB KBAY HI
AVN SPT ELEMENT	COL	BROUSSEAU M J	MCB KBAY HI
MARAVNLOGSPTTELE	LTCOL	LINDBOE D T	MCB KBAY HI
HMH-362	LTCOL	REDMAN J M	MCB KBAY HI
HMH-363	LTCOL	FORAND S L	MCB KBAY HI
HMH-366	LTCOL	JOHNSON D C	MCB KBAY HI
HMT-301	LTCOL	GLEASON P B	MCB KBAY HI

FMF COMMANDERS AND LOCATIONS

Q-5

UNCLASSIFIED

UNCLASSIFIED

UNCLASSIFIED

## MARFORLANT

<b>MARFORLANT</b>	LTGEN	WILHELM C E	MCB CAMLEJ NC
DEPCDR	MAJGEN	DELONG M P	MCB CAMLEJ NC
C/S	COL	DARNER W C	MCB CAMLEJ NC
MCSFBN	COL	PARRISH W H	NORFOLK VA

## FMFEUR DESIGNATE

<b>FMFEUR DESIGNATE</b>	LTGEN	WILHELM C E	MCB CAMLEJ NC
C/S-S	COL	WHITLOW J L	STUTTGART GE

## II MEF

<b>II MEF</b>	MAJGEN	ROLLINGS W E	MCB CAMLEJ NC
DEPCDR	MAJGEN	NYLAND W L	MCB CAMLEJ NC
<b>2D SRI GROUP</b>	LTCOL	MAKUTA R S	MCB CAMLEJ NC
UNNITH&S BN	LTCOL	LESHCHYSHYND L	MCB CAMLEJ NC
2D ANGLICO	LTCOL	RILEY III V J	MCB CAMLEJ NC
2D RADIO BN	LTCOL	LITAKER E T	MCB CAMLEJ NC
2D INTEL CO	LTCOL	HASTY B S	MCB CAMLEJ NC
8TH COMM BN	LTCOL	ALLEN G I	MCB CAMLEJ NC
<b>22D MEU(SOC)</b>	COL	HELLAND S T	MCB CAMLEJ NC (D)
BLT-1/2	LTCOL	GREENWOOD T C	MCB CAMLEJ NC (D)
HMM-261(REIN)	LTCOL	HANIFEN T C	MCAS NEW RIVER NC (D)
MSSG-22	LTCOL	HERNDON C M	MCB CAMLEJ NC (D)
<b>24TH MEU (SOC)</b>	COL	NATONSKI R F	MCB CAMLEJ NC
BLT-3/6	LTCOL	MILLS R P	MCB CAMLEJ NC
HMM-263(REIN)	LTCOL	DUVA M	MCAS NEW RIVER NC
MSSG-24	LTCOL	TONNAKLIFF B L	MCB CAMLEJ NC
<b>26TH MEU</b>	COL	GARDNER E N	MCB CAMLEJ NC
BLT-3/2	LTCOL	LEDOUX J L	MCB CAMP LEJEUNE
HMM-264 (REIN)	LTCOL	CONTI E K	MCAS NEW RIVER NC
MSSG-26	LTCOL	BELL W C	MCB CAMLEJ NC
<b>2D MARDIV</b>	MAJGEN	BEDARD E R	MCB CAMLEJ NC
C/S	COL	SACHTLEBEN J L	MCB CAMLEJ NC
HQ BN, 2D MARDIV	COL	LANGE L F	MCB CAMLEJ NC
2D CBT ENGR BN	LTCOL	WISSLER J E	MCB CAMLEJ NC
2D TANK BN	LTCOL	CALLAHAN JR W H	MCB CAMLEJ NC
2D LAR BN	LTCOL	KELLEY K L	MCB CAMLEJ NC
2D ASLT AMPHIB BN	LTCOL	YOWELL R L	MCB CAMLEJ NC
<b>2D MARINES</b>	COL	NASH G C	MCB CAMLEJ NC
2D BN, 2D MAR	LTCOL	PATTERSON J J	MCB CAMLEJ NC

FMF COMMANDERS AND LOCATIONS

Q-6

UNCLASSIFIED

UNCLASSIFIED



UNCLASSIFIED

UNIT	RANK	NAME	HOME LOCATION
<b>6TH MARINES</b>	COL	SHEETS T E	MCB CAMLEJ NC
1ST BN, 6TH MAR	LTCOL	MCKENZIE K F	MCB CAMLEJ NC
2D BN, 6TH MAR	LTCOL	DUNFORD J F	MCB CAMLEJ NC
<b>8TH MARINES</b>	COL	STREITZ J J	MCB CAMLEJ NC
1ST BN, 8TH MAR	LTCOL	MOORE R S	MCB CAMLEJ NC
2D BN, 8TH MAR	LTCOL	DICK M E	MCB CAMLEJ NC
3D BN, 8TH MAR	LTCOL	LEFEBURE P E	MCB CAMLEJ NC (D)
<b>10TH MARINES</b>	COL	CLICK R L	MCB CAMLEJ NC
1ST BN, 10TH MAR	LTCOL	PACE J A	MCB CAMLEJ NC
2D BN, 10TH MAR	LTCOL	LEHOCKEY J D	MCB CAMLEJ NC
3D BN, 10TH MAR	LTCOL	DALLAS G M	MCB CAMLEJ NC
5TH BN, 10TH MAR	LTCOL	DOZIER R D	MCB CAMLEJ NC
<b>2D MAW</b>	MAJGEN	RYAN M D	MCAS CHERRY PT NC
AWC	BGEN	BOWDON III W G	MCAS CHERRY PT NC
C/S	COL	CROSS M J	MCAS CHERRY PT NC
MWHS-2	LTCOL	WARFLE D F	MCAS CHERRY PT NC
<b>MWSG-27</b>	COL	LEHNERT M R	MCAS CHERRY PT NC
MWSS-271	LTCOL	AYALA J G	MCAS CHERRY PT NC
MWSS-272	LTCOL	SHOOK S V	MCAS NEW RIVER NC
MWSS-273	LTCOL	HUFFMAN L D	MCAS BEAUFORT SC
MWSS-274	LTCOL	DUNLAP R C	MCAS CHERRY PT NC
PSD-27	CAPT	PHIRY J A	MCAS CHERRY PT NC
<b>MACG-28</b>	COL	BOROS L L	MCAS CHERRY PT NC
2D LAAD BN	LTCOL	VANDER MEER W S	MCAS CHERRY PT NC
MACS-2	LTCOL	REXROAD B A	MCAS BEAUFORT SC
MACS-6	LTCOL	HESSLER W G	MCAS CHERRY PT NC
MASS-1	LTCOL	MCFARLAND R R	MCAS CHERRY PT NC
MTACS-28	LTCOL	GIANI V C	MCAS CHERRY PT NC
MWCS-28	LTCOL	BAKER R G	MCAS CHERRY PT NC
<b>MAG-14</b>	COL	MONARCH G E	MCAS CHERRY PT NC
MALS-14	LTCOL	SASSER J L	MCAS CHERRY PT NC
VMA-223	LTCOL	TOMON R F	MCAS CHERRY PT NC
VMA-231	LTCOL	LEE J M	MCAS CHERRY PT NC
VMA-542	LTCOL	SAVARESE M R	MCAS CHERRY PT NC
VMAQ-1	LTCOL	SCHEINER J F	MCAS CHERRY PT NC
VMAQ-2	LTCOL	MUEGGE R A	MCAS CHERRY PT NC
VMAQ-3	LTCOL	WATTER S L	MCAS CHERRY PT NC
VMAQ-4	LTCOL	SULLIVAN M J	MCAS CHERRY PT NC
VMAT-203	LTCOL	MYERS R C	MCAS CHERRY PT NC

## FMF COMMANDERS AND LOCATIONS

Q-7

UNCLASSIFIED

UNCLASSIFIED

<b>UNCLASSIFIED</b> UNIT	RANK	NAME	HOME LOCATION
VMGR-252	LTCOL	BELL R H	MCAS CHERRY PT NC
VMGRT-253	LTCOL	FRANCHI W A	MCAS CHERRY PT NC
VMU-2	LTCOL	HORN D E	MCAS CHERRY PT NC
<b>MAG-26</b>	COL	BYRTUS J A JR	MCAS NEW RIVER NC
MALS-26	LTCOL	EDWARDS L P	MCAS NEW RIVER NC
HMH-461	LTCOL	SUTER J R	MCAS NEW RIVER NC
HMLA-167	LTCOL	KENDRICK R M	MCAS NEW RIVER NC
HMM-264	LTCOL	CONTI E K	MCAS NEW RIVER NC
HMM-266	LTCOL	KNOLL S L	MCAS NEW RIVER NC
HMM-261	LTCOL	HANIFEN T C	MCAS NEW RIVER NC
HMT-204	LTCOL	REED J M	MCAS NEW RIVER NC
PSD-26	LTCOL	WALSH E	MCAS NEW RIVER NC
<b>MAG-29</b>	COL	PATTON T L	MCAS NEW RIVER NC
MALS-29	LTCOL	FRACASSA M	MCAS NEW RIVER NC
HMH-464	LTCOL	TARBUTTON W R	MCAS NEW RIVER NC
HMLA-269	LTCOL	MAHAFFEY M D	MCAS NEW RIVER NC
HMM-162	LTCOL	VAN DYKE A E	MCAS NEW RIVER NC
HMM-263	LTCOL	DUVA M	MCAS NEW RIVER NC
HMM-365	LTCOL	CUSHING D E	MCAS NEW RIVER NC
HMT-302	LTCOL	MONTEMAYOR J	MCAS NEW RIVER NC
<b>MAG-31</b>	COL	AMOS J F	MCAS BEAUFORT SC
MALS-31	LTCOL	BERGMAN I E	MCAS BEAUFORT SC
PSD-31	LTCOL	CANTRELL B E	MCAS BEAUFORT SC
VMFA-115	LTCOL	DEWITT J D	MCAS BEAUFORT SC
VMFA-122	LTCOL	DOUGHTY M J	MCAS BEAUFORT SC
VMFA-251	LTCOL	VALENTINO A W	MCAS BEAUFORT SC
VMFA-312	LTCOL	ALLES R D	MCAS BEAUFORT SC
VMFA(AW)-224	LTCOL	WHITE J A	MCAS BEAUFORT SC
VMFA(AW)-332	LTCOL	FINDLAY R J	MCAS BEAUFORT SC
VMFA(AW)-533	LTCOL	BUTLER W G	MCAS BEAUFORT SC
<b>2D FSSG</b>	BGEN	MASHBURN H JR	MCB CAMLEJ NC
C/S	COL	BEAVERS J B II	MCB CAMLEJ NC
HQSVC BN	LTCOL	PHILLIPS M W	MCB CAMLEJ NC
8TH MT BN	LTCOL	OTTO S W	MCB CAMLEJ NC
2D SUPPY BN	COL	WLLIAMS T J	MCB CAMLEJ NC
8TH ENGR SPT BN	LTCOL	BARILICH S F	MCB CAMLEJ NC
2D LANDING SPT BN	LTCOL	NIELSEN T J	MCB CAMLEJ NC
2D DENTAL BN	CAPT	KVASKA G J (USN)	MCB CAMLEJ NC
2D MEDICAL BN	CAPT	HOOTON C J (USN)	MCB CAMLEJ NC
2D MAINT BN	LTCOL	WINGARD J R	MCB CAMLEJ NC

FMF COMMANDERS AND LOCATIONS

Q-8

UNCLASSIFIED

UNCLASSIFIED

UNCLASSIFIED

UNIT	RANK	NAME	HOME LOCATION
<b>MARINE FORCES RESERVE</b>			
<b>MARFORRES</b>	MAJGEN	WILKERSON T L	NEW ORLEANS, LA
Deputy MARFORRES	BGEN	HULY J C	NEW ORLEANS, LA
C/S	COL	SELVAGE D R	NEW ORLEANS, LA
RMAGTF CE, LANT	BGEN	ENGLEHARDT S M	MCB CAMLEJ NC
RMAGTF CE, PAC	BGEN	MCCARTHY D M	MCB CAMPEN CA
HQBN, MARFORRES	LTCOL	GRIFFIN O JR	NEW ORLEANS, LA
3D FORECON CO	MAJ	MAUBERT P H	MOBILE, AL
4TH FORECON CO	MAJ	HUMMEL J B	HONOLULU, HI
6TH COMM BN	LTCOL	NEUBAUER J J	FT SCHUYLER, NY
3D ANGLICO	LTCOL	MCCLOSKEY M P	LONG BEACH, CA
4TH ANGLICO	LTCOL	RADTKE III W A	WEST PALM BEACH, CA
3D CAG	COL	MAY III W F	LOS ANGELES, CA
4TH CAG	COL	RYAN F X	ANACOSTIA, MD
<b>4TH MARDIV</b>	BGEN	PUNARO A L	NEW ORLEANS, LA
C/S	COL	CHAVEZ R J	NEW ORLEANS, LA
4TH CBT ENGR BN	LTCOL	TURPIN R B	BALTIMORE, MD
4TH RECON BN	LTCOL	ANDRUS J C	SAN ANTONIO, TX
4TH TANK BN	LTCOL	STANLEY D D	SAN DIEGO, CA
8TH TANK BN	LTCOL	PANNELL M R	ROCHESTER, NY
4TH LAR BN	MAJ	WALKER M M	MCB CAMPEN CA
4TH ASLT AMPHIB BN	LTCOL	SAPUTO J W	TAMPA, FLA
<b>23D MARINES</b>	COL	HERNANDEZ L G	SAN RAFAEL, CA
1ST BN, 23D MAR	LTCOL	WILLIAMS J L	HOUSTON, TX
2D BN, 23D MAR	LTCOL	SMITH H N	ENCINO, CA
3D BN, 23D MAR	LTCOL	PHILLIPS J L	NEW ORLEANS, LA
<b>24TH MARINES</b>	COL	MYERS C O	KANSAS CITY, MO
1ST BN, 24TH MAR	LTCOL	MCELREATH D H	DETROIT MI
2D BN, 24TH MAR	LTCOL	HAGOOD D K	CHICAGO, IL
3D BN, 24TH MAR	LTCOL	GRATHWOHL B R	BRIDGETON, MO
<b>25TH MARINES</b>	COL	ALAURIA A T	WORCESTER, MA
1ST BN, 25TH MAR	LTCOL	LYDON J W	CAMP EDWARDS MA
2D BN, 25TH MAR	LTCOL	KLINE M L	GARDEN CITY, NY
3D BN, 25TH MAR	LTCOL	BALLARD J R	BROOKPARK, OH
<b>14TH MARINES</b>	COL	GARNER J M	NAS DALLAS TX
1ST BN, 14TH MAR	LTCOL	GIRON B A	ALAMEDA, CA
2D BN, 14TH MAR	LTCOL	WORKMAN M A	FT WORTH, TX
3D BN, 14TH MAR	LTCOL	PHILLIPS JR H R	PHILADELPHIA, PA
4TH BN, 14TH MAR	LTCOL	GILBERT J T	BESSEMER, AL
5TH BN, 14TH MAR	COL	FOULK R E	LONG BEACH, CA

FMF COMMANDERS AND LOCATIONS

Q-9

UNCLASSIFIED

UNCLASSIFIED

UNCLASSIFIED

UNIT	RANK	NAME	HOME LOCATION
CG 4TH MAW	BGEN	KUKLOK K B	NEW ORLEANS, LA
C/S	COL	BRAITHWAITE R E	NEW ORLEANS, LA
MWHS-4	LTCOL	PETRICK M A	NAS BELLECHASSE LA
<b>MWSG-47</b>	COL	CLEMMER W A	ANGC SELFRIDGE, MI
MWSS-471	LTCOL	ARCHER T E	FT WORTH TX
MWSS-472	LTCOL	GRAVES G N	NAS MARIETTA GA
MWSS-473	LTCOL	MERRILL D A	NAS MIRAMAR CA
MWSS-474	CAPT	CASEY R K	JOHNSTOWN, PA
<b>MACG-48</b>	COL	KRATSAS J J	FT SHERIDAN, IL
MACS-23	LTCOL	FINDELL R A	AURORA, CO
MACS-24	LTCOL	ANTHENS	DAM NECK, VA
MTACS	LTCOL	WEBB G E	FT SHERIDAN, IL
MWCS-48	LTCOL	BAYLES III W S	FT SHERIDAN, IL
MASS-6	LTCOL	BURNETT	WESTOVER AFB MA
HQ 4TH LAAM BN	MAJ	GLOVER	MCRTC FRESNO, CA
HQ 4TH LAAD BN	MAJ	KLEINFELTER J J	PASADENA, CA
<b>MAG-41</b>	COL	TYRA W D	FT WORTH, TX
MALS-41	LTCOL	RAETZ C G	FT WORTH, TX
VMFA-124	LTCOL	OEHL W F	FT WORTH, TX
VMFA-112	LTCOL	WILKINSON R J	FT WORTH, TX
VMGR-234	LTCOL	MEDVETZ M E	FT WORTH, TX
<b>MAG-42</b>	COL	ACREE C	NAS MARIETTA GA
MALS-42	LTCOL	HOLST L E	NAS MARIETTA GA
VMFA-142	LTCOL	DOYLE M J	NAS CECIL FIELD FL
HMLA-775, DET A	LTCOL	CARLSON C H	NAS BELLE CHASSE LA
HMM-774	LTCOL	KING L M	NAS NORFOLK VA
HMLA-773	LTCOL	CROLEY J M	NAS MARIETTA GA
<b>MAG-46</b>	COL	GISOLO G G	NAS MIRAMAR CA
MALS-46	LTCOL	BERKLEY J W	NAS MIRAMAR CA
VMFA-134	LTCOL	FINCH W S	NAS MIRAMAR CA
HMLA-775	LTCOL	RICHARDSON M T	MCB CAMPEN CA
HMM-764	LTCOL	HERMES R D	MCAS EL TORO CA
VMFT-401	LTCOL	DEWEY H C	MCAS YUMA AZ
HMM-769	MAJ	DELANEY T M	MCAS EL TORO CA
<b>MAG-49</b>	COL	GHORMLEY E R	NAS WILLOW GROVE, PA
VMA-131	LCOL	RUFO J F	NAS WILLOW GROVE, PA
VMFA-321	MAJ	MURPHY T P	ANDREW AFB, MD
VMGR-452	LTCOL	PEARL J D	STEWART NY
HMH-772	LTCOL	WASSINK D J	NAS WILLOW GROVE, PA
<b>4TH FSSG</b>	BGEN	DAVIS J A	NEW ORLEANS, LA
D/C	COL	WELLS D M	NEW ORLEANS, LA

## FMF COMMANDERS AND LOCATIONS

Q-10

UNCLASSIFIED

UNCLASSIFIED

UNCLASSIFIED

UNIT	RANK	NAME	HOME LOCATION
C/S	COL	MORROW S M	NEW ORLEANS, LA
HQSVC BN	LTCOL	ICENHOUR K	NAS MARIETTA GA
DET-1 HQ	COL	NOYNIHAN D	NAS MARIETTA, GA
4TH MAINT BN	LTCOL	TODD W F	CHARLOTTE, NC
6TH MT BN	LTCOL	CARMODY K O	RED BANK, NJ
4TH SUPPLY BN	COL	CARR L A	NEWPORT NEWS, VA
6TH ENGR SPT BN	LTCOL	CHESTON M G	PORTLAND, OR
4TH LANDING SPT BN	LTCOL	HUTCHINSON J A	SEATTLE, WA
4TH DENTAL BN	CAPT	HILL M B (USN)	NAS MARIETTA GA
4TH MEDICAL BN	CAPT	ANDRUS P (USN)	NAS MIRAMAR CA
<b>FSSG (EAST)</b>	COL	LEE G T	MCB CAMLEJ NC
<b>FSSG (WEST)</b>	COL	PIERCE J	MCB CAMPEN CA
<b>PSB (PAC)</b>	COL	JOHNSON K W	MCB CAMPEN CA
<b>PSB (LANT)</b>	COL	MCDONALD B T	MCB CAMLEJ NC
CSSE-41	LTCOL	DYER C	PORTLAND, OR
CSSE-42	LTCOL	COUGHLIN T M	NEWPORT NEWS, VA
CSSE-43	LTCOL	WATTERS R J	MARIETTA, GA
<b>CG, MCRSC</b>	BGEN	WILLIAMS III L V	KANSAS CITY, MO
DEPCDR	COL	CREED J L	KANSAS CITY, MO
C/S	COL	BANDY C E	KANSAS CITY, MO

NOTE- THIS INFORMATION IS UPDATED AS OF 960830-INFORMATION IS PROVIDED BY MARFORLANT, MARFORPAC, MARFORRES AND III MEF.

FMF COMMANDERS AND LOCATIONS

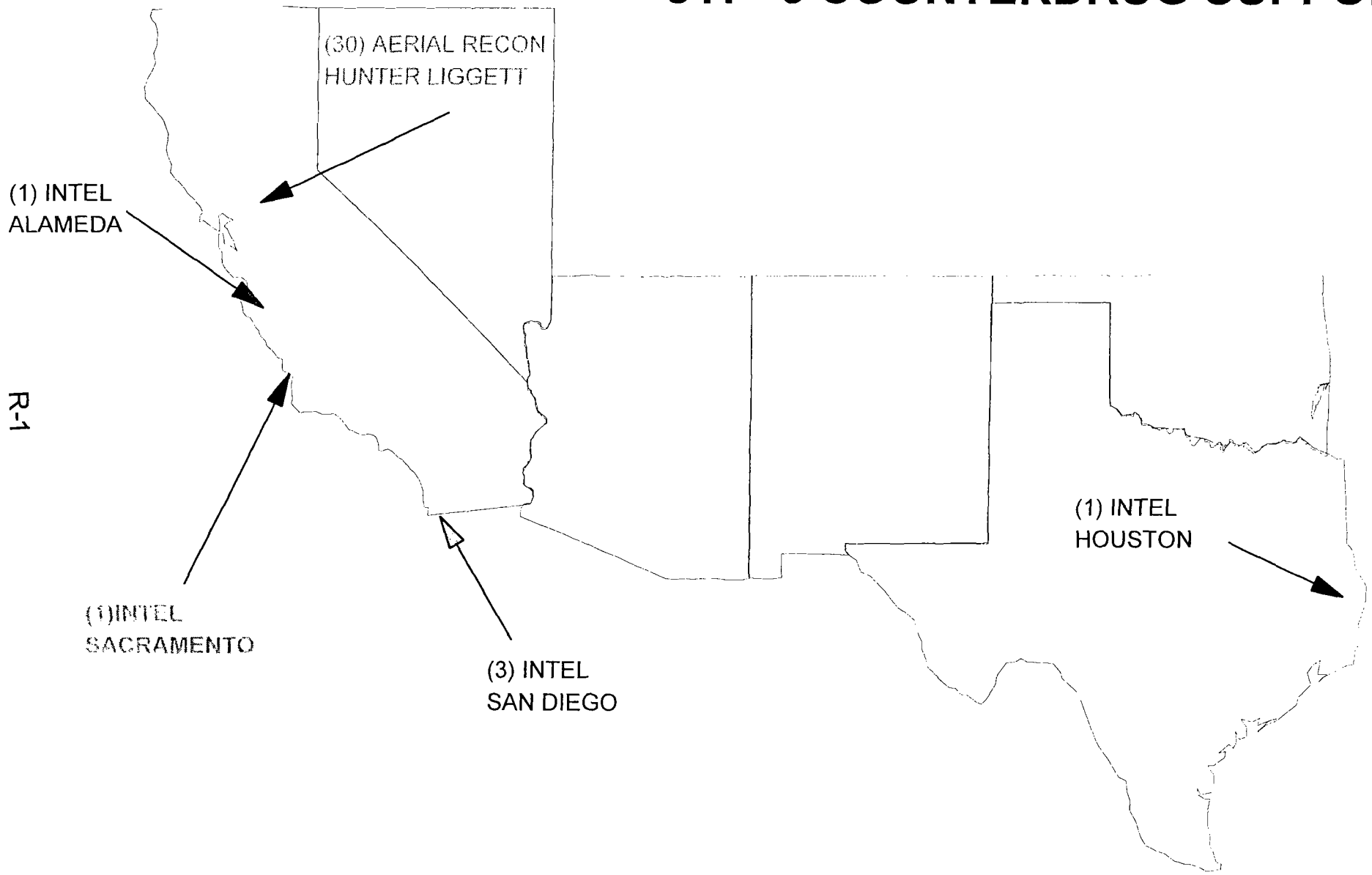
Q-11

UNCLASSIFIED

UNCLASSIFIED

DLEA SENSITIVE

# JTF- 6 COUNTERDRUG SUPPORT



DATE: 26 SEP 97

DLEA SENSITIVE

USACOM COUNTERDRUG SUPPORT

**CONFIDENTIAL**

R-2

(1) INTEL  
NEW ORLEANS

(6) INTEL  
KEY WEST

(1) INTEL  
MIRAMAR

**CONFIDENTIAL**

DATE: 26 SEP 97

