

UNCLASSIFIED

UNCLASSIFIED

3000  
CURRENT OPS  
2 JUN 97

[REDACTED] -UNCLASSIFIED UPON REMOVAL OF ENCLOSURE (1)

FROM: HEAD, CURRENT OPERATIONS BRANCH, OPERATIONS DIVISION,  
PLANS, POLICIES AND OPERATIONS DEPARTMENT, HEADQUARTERS,  
U.S. MARINE CORPS

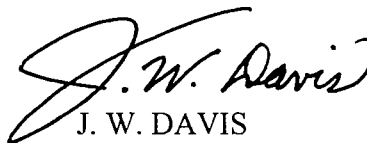
SUBJ: MONTHLY OPERATIONAL SUMMARY - MONTH OF MAY 97

ENCL: (1) HQMC OPERATIONAL SUMMARY OF 30 MAY 97 (S)

1. THE ENCLOSURE IS PUBLISHED MONTHLY.
2. REQUEST THAT ERRORS, QUESTIONS, AND RECOMMENDATIONS REGARDING THE INFORMATION PRESENTED BE REPORTED TO:

COMMANDANT OF THE MARINE CORPS (POC),  
HEADQUARTERS , U.S. MARINE CORPS  
WASHINGTON, D.C. 20380-1775.

- (A) COMMERICAL: (703) 614-2151
- (B) DSN: 224-2151/1617
- (C) STU III: 224-2151/1617
- (D) FAX: 225-7366

  
J. W. DAVIS

DERIVED FROM: MULTIPLE SOURCES  
DECLASSIFY ON: X4

UNCLASSIFIED

Subj: MONTHLY OPERATIONAL SUMMARY: Distribution (1 ea unless noted)

[REDACTED]  
UNCLASSIFIED

**TABLE OF CONTENTS**


<b><u>WORLD WIDE SUMMARY</u></b>	TAB
U.S. OPERATIONS .....	A
MARINE CORPS DEPLOYMENTS .....	B
MAP- DEPLOYED MARINE FORCES .....	C
<b><u>COMMITTED FORCES</u></b>	
DEPLOYED .....	D
PREDEPLOYMENT .....	E
CONTINGENCY .....	F
<b><u>STATUS</u></b>	
INFANTRY BATTALIONS .....	G
<b><u>SCHEDULES</u></b>	
EXERCISES.....	H
MEU DEPLOYMENT .....	I
UDP DEPLOYMENT .....	J
CARRIER / AIR INTEGRATION .....	K
<b><u>LOCATION OF FORCES</u></b>	
CONUS/ OCONUS.....	L
AMPHIB SHIPS.....	M
MPSRON SHIPS.....	N
SECURITY FORCES.....	O
SECURITY GUARD.....	P
FMF COMMANDERS .....	Q
COUNTER DRUG OPERATIONS .....	R

## U.S. OPERATIONS (WORLDWIDE)

UNCLASSIFIED

USACOM		
OPERATION	LOCATION	MISSION
USSPTGRP-HAITI*	HAITI	PROVIDES SUPPORT FOR DFT UNITS CONDUCTING HUMANITARIAN/CIVIL ASSISTANCE OPS
USSOUTHCOM		
OPERATION	LOCATION	MISSION
SAFE BORDERS	ECUADOR	<ul style="list-style-type: none"> <li>• PROVIDE SUPPORT TO MAP OBSERVER GROUP OPERATIONS ALONG A PORTION OF DISPUTED ECUADOR - PERU BORDER</li> <li>• VERIFY IMPLEMENTATION OF, AND COMPLIANCE WITH, THE CEASE-FIRE AGREEMENT</li> <li>• FACILITATE DIPLOMATIC RESOLUTION OF THE BORDER DISPUTE</li> </ul>
LASER STRIKE*	PERU	<ul style="list-style-type: none"> <li>• THREE PHASED SOURCE ZONE COUNTERDRUG OPERATION DIRECTED AGAINST: <ul style="list-style-type: none"> <li>- ILLEGAL USE OF AIRSPACE</li> <li>- ALTERNATE TRANSPORTATION MODES</li> <li>- PRODUCTION CAPABILITIES</li> </ul> </li> </ul>
USCENTCOM		
OPERATION	LOCATION	MISSION
SOUTHERN WATCH*	IRAQ	<ul style="list-style-type: none"> <li>• ENFORCE SOUTHERN NFZ BELOW THE 33D PARALLEL</li> <li>• CONDUCT MILITARY OPERATIONS IN SUPPORT OF UNSCR: <ul style="list-style-type: none"> <li>- 687 (SOVEREIGNTY OF KUWAIT BORDER)</li> <li>- 688 (REPRESSION OF CIVILIAN POPULATION)</li> </ul> </li> </ul>
DESERT FOCUS*	SAUDI, ARABIA	<ul style="list-style-type: none"> <li>• CONDUCT CI FORCE PROTECTION OPERATIONS ISO CJTF-SWA</li> <li>• RELOCATION OF MULTI-SERVICE ASSETS</li> </ul>
USCINCEUR		
OPERATION	LOCATION	MISSION
SILVER WAKE*	TIRANA, ALBANIA	COMJTFSW CONTINUES TO PROVIDE SECURITY TO THE UNITED STATES EMBASSY COMPOUND AND THE HELICOPTER LANDING ZONE/HOUSING AREA COMPOUND IN TIRANA, ALBANIA THROUGH 26 APRIL
NORTHERN WATCH*	NORTHERN IRAQ	<ul style="list-style-type: none"> <li>• ENFORCE NFZ N 36 DEGREE LATITUDE AGAINST IRAQI MIL A/C</li> <li>• MAINTAIN COALITION SURVEILLANCE AND MONITORING OF IRAQI MILITARY AND GOVERNMENT FORCES IN NORTHERN IRAQ TO DETERMINE IRAQI COMPLIANCE WITH APPLICABLE UNSC'S DISCONTINUED, OPC II MUST MAINTAIN CAPABILITY TO RESUME MSN WITHIN 8 DAYS OF NOTIFICATION</li> </ul>
DETERMINED GUARD	ADRIATIC SEA	MARITIME INTERCEPTION OPS ISO SFOR
DELIBERATE GUARD *	BOSNIA / HERZEGOVINA	<ul style="list-style-type: none"> <li>• ENFORCE NFZ OVER BOSNIA-HERZEGOVINA</li> <li>• PROVIDE AIR SUPPORT TO SFOR</li> <li>• FORMERLY DENY FLIGHT</li> </ul>
ABLE SENTRY	MACEDONIA	U.S. FORCES (REIN CO) PROVIDES SUPPORT TO UN OBSERVER MISSION IN FY/ROM MISSION
JOINT GUARD*	BOSNIA / HERZEGOVINA	IMPLEMENTATION OF MILITARY TASKS OF PEACE AGREEMENT UNDER AUTHORITY OF A UN SECURITY COUNCIL RESOLUTION (CHAPTER VII)
GUARDIAN* RETRIEVAL	KINSHASA, ZAIRE	POTENTIAL ONGOING PREPARATIONS FOR NONCOMBATANT EVACUATION
NOBLE OBLISK	SIERRA LEONE	<ul style="list-style-type: none"> <li>• TO CONDUCT NEO OF AMCITS AND OTHER DESIGNATED PERS</li> <li>• TO ENFORCE AND PROVIDED SECURITY FOR AMEMBASSY FREETOWN, SIERRA LEONE</li> </ul>
USPACOM		
OPERATION	LOCATION	MISSION
JTF FULL ACCOUNTING*	SOUTHEAST ASIA	SUPPORT NATIONAL EFFORTS FOR THE ACCOUNTING OF POWS/MIAS FROM THE VIETNAM WAR

UNCLASSIFIED


  
970606

**U.S. MARINE CORPS DEPLOYMENTS  
(IN SUPPORT OF WORLD WIDE OPERATIONS AND MAJOR EXERCISES)**

<b>USACOM</b>				
<b>UNITS</b>	<b>LOCATION</b>	<b>STRENGTH</b>	<b>OPERATIONS</b>	<b>REMARKS</b>
* DET, MWSS-271, 2D MAW ** 4TH MED BN *** CI TEAM, 2D SRIG	HAITI	50	EXERCISE FAIRWINDS	ISO USSPTGRPHAITI * Det, MWSS-271 provides crash and rescue capabilities and firefighting support in Port Au Prince through TBD Jul. ** 4TH MED BN provides medical support through 10 Jun. *** CI TEAM provides support (29 Apr - 10 Jun).
B CO(-)(REIN), 8TH ESB	PETITE MARTINIQUE, GRENADA	110	CARIB-GRENADA-97	Deployed as part of a joint overseas trng program to conduct engineer related construction, Humanitarian Civic Assistance and support medical readiness and trng exercises. Redeployment is scheduled for 23 Jun.
<b>USCINCEUR</b>				
<b>UNITS</b>	<b>LOCATION</b>	<b>STRENGTH</b>	<b>OPERATIONS</b>	<b>REMARKS</b>
VMFA(AW)-224 VMAQ-3	AVIANO AB, ITALY	426	DELIBERATE GUARD/ JOINT GUARD	Flt ops ISO Deliberate Guard.
INDIVIDUAL USMC AUGMENTEES	EUCOM THEATER	47	JOINT GUARD	ISO SFOR.
DET, VMU-2 DET, 4TH CAG	EUCOM THEATER	16	JOINT GUARD	Det, VMU-2 ISO SFOR. P-3 downlink support. Det, 4TH CAG, augmenting 361st Civil Affairs Brigade, USA, in support of SFOR Peacekeeping Operations.
DET, VMGR-252	INCIRLIK, TURKEY	34	OPERATION NORTHERN WATCH	Provide aerial refueling support, 1 Apr - 30 Jun. Operation maintains coalition surveillance and monitoring of Iraqi forces in Northern Iraq.
22D MEU(SOC) USS KEARSARGE ARG BLT-1/2 HMM-261(REIN) MSSG-22	SPLIT ARG	2,155	OPERATION NOBLE OBELISK	22D MEU(SOC) USS Kearsarge MODLOC Sierra Leone ISO of Op Noble Obelisk to perform a NEO. USS Carter Hall & USS Ponce are in port in Almeria, Spain through 7 Jun, participating in BETACOM 97.
MCSF-TIRANA	TIRANA, ALBANIA	71	OPERATION SILVER WAKE	Provide security for the American Embassy Tirana and Rilindja Ridge housing compound.
<b>USCINCCENT</b>				
6TH PLT, FAST CO, MSCF BN DET, 1ST SRIG CI SUBTEAM	BAHRAIN	59	SECURITY ENHANCEMENT	Provide additional security force in support of COMUSNAVCENT force protection operations in Bahrain. Redeployment is scheduled for 8 Jul.
15TH MEU(SOC) USS BOXER ARG BLT-2/1 HMM-161(REIN) MSSG-15	AQABA, JORDAN	2,110	FORWARD PRESENCE	Participating in Ex Infinite Moonlight, 19 May-19 Jun.
EXPLOSIVE MWD TEAMS	AQABA, JORDAN	7	EX INFINITE MOONLIGHT	Provide force protection during offload/onload ops for ARG/MEU in support of Ex Infinite Moonlight.
VMFA-323 USS CONSTELLATION	PERSIAN GULF	232	FORWARD PRESENCE	Ops ISO Southern Watch, 19 May-12 Jun.
<b>USPACOM</b>				
31ST MEU USS BELLEAU WOOD ARG BLT-1/5 HMM-262(REIN) MSSG-31	ENR OKINAWA, JAPAN	1,702	FORWARD PRESENCE	Enr Okinawa for offload, 5-6 Jun.

U.S. MARINE CORPS DEPLOYMENTS

B-1

UNCLASSIFIED

SECRET  
970606

ELEMENTS OF III MEF USS FREDERICK	ENR KOTA KINABALU, MALAYSIA	231	CARAT 97	Enr Kota Kinabalu, Malaysia for pvst, 2-5 Jun. CARAT is an annual 7th Fleet deployment ISO CINCPAC'S Cooperative Engagement Strategy, designed to conduct bilateral exercises and trng w/association of Southeast Asian Nations (ASEAN).
VMFA-212	KUNSAN AB, KOREA	113	FORWARD PRESENCE	Providing Sqdn support for 8th Fighter Wing.

## USSOUTHCOM

UNITS	LOCATION	STRENGTH	OPERATIONS	REMARKS
Co E(-)(REIN), 2/8 DET, SC Co 2D MARDIV	RODMAN N.S., PANAMA	155	CANAL ZONE SECURITY	Conducting Canal Zone Security. Redeployment is scheduled for 11 Jun.
DET, MWSG-27	BELIZE CITY, BELIZE	20	EXERCISE NEW HORIZON-BELIZE	Providing engineer support and conducting humanitarian and civil assistance operations Redeployment is scheduled for 10 Jun.
DET, MACG-28	PUCALLPA, PERU	70	COUNTERDRUG OPS	Conducting detection and monitoring ops ISO OPERATION LASER STRIKE. Redeployment is scheduled for 30 Jun.
MARFORLANT RTT	PUERTO LEGUIZAMO, COLOMBIA	4	WATERBORNE PREDEPLOYMENT TRAINING	Initiate instructor trng at the Colombian Marine Corps Riverine Trng school in Puerto Leguizamo, Colombia.

# DEPLOY JSMC FORCES (ESTIMATED LOCATIONS FOR 300600L MAY 97)

PHIBRON 4  
22D MEU(SOC)(FWD)  
USS PONCE AND USS CARTER HALL  
ALMERIA, SPAIN  
PAGE D-2

OPERATION DELIBERATE GUARD  
AVIANO AB, ITALY  
VMFA(AW)-224  
VMAQ-3  
PAGE D-4

OPERATION JOINT GUARD  
EUCOM THEATER  
INDIVIDUAL USMC AUGMENTEES  
DET, VMU-2  
DET, 4TH CAG  
PAGE D-4, D-5

OP SILVER WAKE  
MCSF AMEMBASSY TIRANA  
TIRANA, ALBANIA  
PAGE D-7

EX NEW HORIZON-BELIZE  
BELIZE CITY, BELIZE  
DET, MWSG-27  
PAGE D-6

SECURITY ENHANCEMENT  
BAHRAIN  
6TH PLT, FAST CO, MSCF BN  
DET, 1ST SRIG CI SUBTEAM  
PAGE D-6

VMFA-212  
KUSAN, KOREA  
PAGE D-8

PANAMA CANAL ZONE SECURITY  
RODMAN N.S., PANAMA  
Co E(-) (REIN), 2/8  
DET SC Co HQ BN  
PAGE D-4

EX CARAT 97  
ELEMENTS OF III MEF  
ENR TO KOTA KINALABU,  
MALAYSIA  
USS FREDERICK  
PAGE D-8

EXERCISE FAIRWINDS  
HAITI  
DET, MWSS-271  
CI TEAM, 2D SRIG  
4TH MED BN  
PAGE D-5

OP GUARDIAN RETRIEVAL  
PHIBRON 4  
22D MEU(SOC)  
MODLOC SIERRA LEONE  
PAGE D-2

PHIBRON 7  
15TH MEU(SOC)  
AQABA, JORDAN  
USS BOXER  
USS OGDEN  
USS FT. FISHER  
PAGE D-1

EXPLOSIVE MWD TEAMS  
AQABA, JORDAN  
PAGE D-8

USS CONSTELLATION  
PERSIAN GULF  
VMFA-323  
PAGE D-6

31ST MEU  
ENR OKINAWA  
USS BELLEAU WOOD  
USS DUBUQUE  
USS FT MCHENRY  
PAGE D-3

MARFORLANT RTT 97-2  
PUERTO LEGUIZAMO,  
COLOMBIA  
PAGE D-7

LASER STRIKE  
PUCALLPA, PERU  
DET MACG-28  
PAGE D-5

EX CARIB-GRENADA-97  
PETITE MARTINIQUE  
B CO(-)(REIN), 8TH ESB  
PAGE D-7

OPERATION NORTHERN WATCH  
INCIRLIK, TURKEY  
DET, VMGR-252  
PAGE D-6



**15TH MEU(SOC)**

24 MAR - 24 SEP 97

(U) CURRENT STATUS			PARTICIPATING IN EX INFINITE MOONLIGHT IN AQABA, JORDAN, 19 MAY - 19 JUN				
(C) TASK ORGANIZATION		USMC OFF/ENL		USN OFF/ENL		COMMANDING OFFICER	
CE, 15TH MEU		32	154	1	3	COL W. A. WHITLOW	
BLT-2/1		57	1,141	3	46	LTCOL J. D. INGRHAM	
HMM-161 (REIN)		69	350	1	3	LTCOL A. M. HASLAM	
MSSG-15		12	215	3	20	LTCOL M. J. GODFREY	
TOTAL		170	1,860	8	72		
TOTAL --- 2,110							
(C) ARMS AND EQUIPMENT IN POSSESSIONS:							
NUMBER		ITEM		NUMBER		ITEM	
12		AAVP-7A1		9		LAV-25	
1		AAVR-7A1		2		LAV(AT)	
6		M198		2		LAV(L)	
14		TOWS		2		LAV(M)	
1		LAV-C2		1		LAV(R)	
(C) AIRCRAFT O/H:							
NUMBER		TYPE		NUMBER		TYPE	
12		CH-46E		4		AH-1W	
4		CH-53E		3		UH-1N	
6		AV-8B					
AMPHIB INFORMATION							
USS BOXER				LHD-4			
USS OGDEN PVST				LPD-5			
USS FT FISHER PVST				LSD-40			
COMPHIBRON 7				CAPT WEISCOFF (USN)			
(C) LANDING CRAFT:							
SHIP			NUMBER		TYPE		
USS BOXER			2		LCAC		
USS FT FISHER			3		LCU		
FUTURE PLANS							
9-11 JUN				15TH MEU & JORDAINIAN FORCES CONDUCT A BILATERAL CAX			
(U) REFERENCE: 15TH MEU SITREP #33 DTG 160900Z MAY 97							

**22D MEU(SOC)**

16 APR - 15 OCT 97

**(U) CURRENT STATUS**

USS KEARSARGE 22D MEU(SOC) MODLOC SIERRA LEONE ISO OF OP NOBLE OBELISK TO PERFORM A NEO

USS PONCE &amp; USS CARTER HALL 22D MEU(SOC)(FWD) IN PORT ALMERIA, SPAIN THROUGH 7 JUN, PARTICIPATING IN BETACOM 97

(C) TASK ORGANIZATION	USMC		USN		COMMANDING OFFICER
	OFF/ENL		OFF/ENL		
CE, 22ND MEU	30	191	3	3	COL S. T. HELLAND
BLT 1/2	58	1,072	4	55	LTCOL T. C. GREENWOOD
HMM-261 (REIN)	67	400	1	4	LTCOL T. C. HANIFEN
MSSG-22	14	229	3	21	LTCOL C. M. HERNDON JR
TOTAL	169	1,892	11	83	
TOTAL --- 2,155					

**(C) ARMS AND EQUIPMENT IN POSSESSIONS:**

NUMBER	ITEM	NUMBER	ITEM
13	AAVP-7A1	4	LAV-25
1	AAVC-7A1	2	LAV(AT)
1	AAVR-7A1	1	LAV(L)
8	81MM MORTAR	4	M1A1
8	TOWS	1	M88
6	M198		

**(C) AIRCRAFT O/H:**

NUMBER	TYPE	NUMBER	TYPE
12	CH-46E	4	AH-1W
4	CH-53E	2	UH-1N
6	AV-8B		

**AMPHIB INFORMATION**

USS KEARSARGE MODLOC IN SIERRA LEONE	LHD-3
USS CARTER HALL	LSD-50
USS PONCE	LPD-15
COMPHIBRON 4	CAPT ERTEL(USN)

**(C) LANDING CRAFT:**

SHIP	NUMBER	TYPE
USS KEARSARGE	2	LCAC
USS CARTER HALL	1	LCU
USS PONCE	2	LCU

**FUTURE PLANS**

28 MAY - 6 JUN	MEU FWD CONDUCTS EX BETACOM 97
----------------	--------------------------------

**(U) REFERENCE: 22D MEU SITREP #27 DTG 182300Z MAY 97**



**31ST MEU**

(OKINAWA)

**(U) CURRENT STATUS**

ENR TO OKINAWA FOR OFFLOAD, 5-6 JUN

NOTE: 31ST MEU CMD ELE AND MSPF, TRUE TRNG IN RURAL &amp; URBAN ENVIRONMENT

PRELIMINARY TO MEU(SOC) CERTIFICATION IN GUAM, 25 MAY - 7 JUN (100 PERS)

(C) TASK ORGANIZATION	USMC		USN		COMMANDING OFFICER
	OFF/ENL	OFF/ENL	OFF/ENL	OFF/ENL	
CE, 31ST MEU	18	71	1	2	COL D. H. YOUNG
BLT 1/5	49	961	3	44	LTCOL J. T. BOGGS JR.
HMM-262 (REIN)	55	247	1	2	LTCOL W. E. HARDY
MSSG-31	13	214	3	18	LTCOL J. W. CHANDLER
TOTAL	135	1,493	8	66	
TOTAL --- 1,702					

**(C) ARMS AND EQUIPMENT IN POSSESSIONS:**

NUMBER	ITEM	NUMBER	ITEM
12	AAVP-7A1	4	LAV-25
1	AAVR-7A1	3	LAV(AT)
8	81MM MORTAR	1	LAV(L)
6	M198		
8	TOWS		

**(C) AIRCRAFT O/H:**

NUMBER	TYPE	NUMBER	TYPE
12	CH-46E	3	UH-1N
4	CH-53E	4	AH-1W

**AMPHIB INFORMATION**

USS BELLEAU WOOD	LHA-3
USS DUBUQUE	LPD-8
USS FT MCHENRY	LSD-43
USS GERMANTOWN IN SASEBO, JAPAN	LSD-42
COMPHIBRON 11	CAPT R. A. SILVERS(USN)

**(C) LANDING CRAFT:**

SHIP	NUMBER	TYPE
USS BELLEAU WOOD	4	LCU
USS DUBUQUE	1	LCU
USS FT MCHENRY	3	LCAC
USS GERMANTOWN	2	LCAC

**FUTURE PLANS**

16-20 JUN	MEUEX I
-----------	---------

**(U) REFERENCE: 31ST MEU SITREP#15 DTG 251530Z MAY 97**

<b>VMFA(AW)-224 (16 FEB-24 AUG 97)</b>			
<b>VMAQ-3 (24 FEB-24 AUG 97)</b>			
<b>(AVIANO AIRBASE, ITALY)</b>			
<b>(U) CURRENT STATUS</b>		OP DELIBERATE GUARD	
<b>(C) TASK ORGANIZATION</b>	<b>USMC OFF/ENL</b>	<b>USN OFF/ENL</b>	<b>COMMANDING OFFICER</b>
VMFA(AW)-224	188		LTCOL J. A. WHITE
VMAQ-3	238		LTCOL S. L. WATTERS
TOTAL ---426			
<b>(C) AIRCRAFT O/H:</b>			
VMFA(AW)-224		12 X F/A-18D	
VMAQ-3		6 X EA-6B	
<b>(U) REFERENCE: HQ MARFOREUR SITREP DTG 271600Z MAY 97</b>			

<b>ENHANCED SECURITY PANAMA CANAL ZONE</b>			
<b>(RODMAN N.S. , PANAMA)</b>			
<b>(15 MAR - 11 JUN 97)</b>			
<b>(U) CURRENT STATUS</b>		CANAL ZONE SECURITY	
<b>(C) TASK ORGANIZATION</b>	<b>USMC OFF/ENL</b>	<b>USN OFF/ENL</b>	<b>COMMANDING OFFICER</b>
Co E (-)(REIN), 2/8	138		CAPT T. G. GRETSINGER
DET SC Co HQ BN	17		
TOTAL ---155			
<b>(C) ARMS AND EQUIPMENT O/H:</b>			
<b>NUMBER</b>	<b>ITEM</b>	<b>NUMBER</b>	<b>ITEM</b>
8	RRC	2	RAC
<b>FUTURE PLANS</b>			
6 JUN - 6 SEP 97		Co M (-)(REIN), 3/25	
<b>(U) REFERENCE: PHONCON W/ LTCOL PERRY (484-8825) DTD 12 MAY 97</b>			

<b>JOINT GUARD</b>		
<b>INDIVIDUAL USMC AUGMENTEES</b>		
<b>(EUCOM THEATER)</b>		
<b>(DEC 96 - JUL 98)</b>		
<b>(U) CURRENT STATUS</b>		ISO JOINT GUARD
<b>(U) TASK ORGANIZATION</b>	<b>ACTIVE/ RESERVE</b>	<b>COMMANDING OFFICER</b>
BOSNIA	18	
CROATIA	5	
RIM (ITALY/HUNGARY)	5	
TRNG, EUCOM BACKFILL/AFLOAT	19	
TOTAL	47	
<b>(U) REFERENCE: NUMBERS PROVIDED BY MPP-60, MRS. CARLA, DTD 19 MAY 97</b>		

<b>DET, VMU-2 (26 MAY 96 -TBD)</b>			
<b>DET, 4TH CAG (1 JAN - 30 JUN 97)</b>			
<b>(U) CURRENT STATUS</b>		ISO JOINT GUARD	
<b>(U) TASK ORGANIZATION</b>	<b>USMC OFF/ENL</b>	<b>USN OFF/ENL</b>	<b>COMMANDING OFFICER</b>
DET, VMU-2	6	N/A	
DET, 4TH CAG	10	N/A	
TOTAL --- 16			
<b>(U) REFERENCE:</b> VMU-2 PHONECON 582-5909, 22 MAY 97; MARFORRES SEMI-MONTHLY DTG 152033Z MAY 97			

<b>EXERCISE FAIRWINDS</b>			
<b>(SEP 96 - TBD)</b>			
<b>(U) CURRENT STATUS</b>		USSPTGRPHAITI PROVIDES SUPPORT FOR EXERCISE FAIRWINDS PROVIDE TRAINING FOR MILITARY MEDICAL, CIVIC AFFAIRS, AND SECURITY FORCES DET, MWSS-271 (8 JAN - JUL 97) CI TEAM, 2D SRIG (19 SEP - 30 JUN 97) 4TH MED BN (29 APR - 10 JUN 97)	
<b>(C) TASK ORGANIZATION</b>	<b>USMC OFF/ENL</b>	<b>USN OFF/ENL</b>	<b>COMMANDING OFFICER</b>
COM USSPTGRPHAITI	11		COL J. W STULL (USMC)
DET, MWSS-271, 2D MAW	12		GYSGT J. B. SMITH
CI TEAM, 2D SRIG	6		GYSGT M.T. GONZALEZ
4TH MED BN	21		LT E. B. THOMPSON
TOTAL ---50			
<b>(U) REFERENCE:</b> VOICE REP CMDR KIRKPATRICK, J-3, (USACOM) 836-7839, DTD 22 MAY 97			

<b>LASER STRIKE</b>			
<b>(PUCALLPA, PERU)</b>			
<b>(25 SEP 96 - 30 JUN 97)</b>			
<b>(U) CURRENT STATUS</b>		CONDUCT DETECTION AND MONITORING OPS	
<b>(C) TASK ORGANIZATION</b>	<b>USMC OFF/ENL</b>	<b>USN OFF/ENL</b>	<b>COMMANDING OFFICER</b>
DET, MACG-28	70		MAJ COLE
TOTAL --- 70			
<b>(U) REFERENCE:</b> PHONCON WITH LTCOL GARCIA (484-8859) DTD 12 MAY 97			

<b>EXERCISE NEW HORIZON-BELIZE-97</b> (BELIZE CITY, BELIZE) (4 FEB - 10 JUN)			
<b>(U) CURRENT STATUS</b>		PROVIDING ENGINEER SUPPORT AND CONDUCTING HUMANITARIAN AND CIVIL ASSISTANCE OPERATIONS	
<b>(C) TASK ORGANIZATION</b>	<b>USMC OFF/ENL</b>	<b>USN OFF/ENL</b>	<b>COMMANDING OFFICER</b>
DET, MWSG-27	1/19		CWO2 D. A. SCHMIK
TOTAL --- 20			
<b>(U) REFERENCE: PHONCON WITH LTCOL GARCIA (484-8859) DTD 12 MAY 97</b>			

<b>OPERATION NORTHERN WATCH</b> (INCIRLIK, TURKEY) (1 APR - 30 JUN)			
<b>(U) CURRENT STATUS</b>		PROVIDING AERIAL REFUELING SUPPORT FOR OPERATION NORTHERN WATCH	
<b>(C) TASK ORGANIZATION</b>	<b>USMC OFF/ENL</b>	<b>USN OFF/ENL</b>	<b>COMMANDING OFFICER</b>
DET, VMGR-252	6/28		MAJ M. H. CRUM
TOTAL --- 34			
<b>(C) AIRCRAFT O/H:</b>		2 X KC-130	
<b>(U) REFERENCE: PHONCON WITH CAPT KAY (582-2501) OF 28 MAY 97</b>			

<b>VMFA-323</b> USS CONSTELLATION CV-64 (CVW-2) (2 APR - 2 OCT)			
<b>CURRENT STATUS</b>		CONDUCTING OPS ISO SOUTHERN WATCH 19 MAY-12 JUN	
<b>(C) TASK ORGANIZATION</b>	<b>USMC OFF/ENL</b>	<b>USN OFF/ENL</b>	<b>COMMANDING OFFICER</b>
VMFA-323	24   206	1   1	LTCOL R. W. PRIEST
TOTAL---232			
<b>(C) AIRCRAFT O/H:</b>		12 X F/A-18C	
<b>(U) REFERENCE:PHONCON w/VMFA-323 on 25 MAR 97 (577-4352)</b>			

<b>SECURITY ENHANCEMENT</b> (BAHRAIN) (8 APR - 8 JUL)			
<b>CURRENT STATUS</b>		SECURITY FORCE IN SUPPORT OF COMUSNAVCENT FORCE PROTECTION OPERATIONS IN BAHRAIN	
<b>(C) TASK ORGANIZATION</b>	<b>USMC OFF/ENL</b>	<b>USN OFF/ENL</b>	<b>COMMANDING OFFICER</b>
6TH PLT, FAST CO, MSCF BN	1   52		2
DET, 1ST SRIG CI SUBTEAM	1   3		
TOTAL---59			
<b>(U) REFERENCE:PHONCON w/LANT G-3 LTCOL SCHOUSTER 28 MAY 97 (484-8531); PAC G-3, 315-477-0358</b>			

<b>CARIB-GRENADA-97</b> (PETITE MARTINIQUE, GRENADA) (18 APR - 23 JUN)				
<b>CURRENT STATUS</b>		DEPLOYED AS PART OF A JOINT OVERSEAS TRNG PROGRAM TO CONDUCT ENGINEER RELATED CONSTRUCTION, HUMANITARIAN CIVIC ASSISTANCE AND SUPPORT MEDICAL READINESS AND TRAINING EXERCISES		
<b>(C) TASK ORGANIZATION</b>	<b>USMC OFF/ENL</b>	<b>USN OFF/ENL</b>		<b>COMMANDING OFFICER</b>
B CO(-)(REIN), 8TH ESB	3   103	0	4	CAPT J. F. WILLIAMS
TOTAL---110				
<b>(U) REFERENCE:</b> PHONCON w/LANT G-3 DTD17 APR				

<b>MARFORLANT RTT 97-2</b> (PUERTO LEGUIZAMO, COLOMBIA) (27 APR - 30 JUN)			
<b>(U) CURRENT STATUS</b>		INITIATE INSTRUCTOR TRAINING AT THE COLOMBIAN MARINE CORPS RIVERINE TRNG SCHOOL IN PUERTO LEGUIZAMO, COLOMBIA	
<b>(C) TASK ORGANIZATION</b>	<b>USMC OFF/ENL</b>	<b>USN OFF/ENL</b>	<b>COMMANDING OFFICER</b>
MARFORLANT RTT	4		MAJ G. SMITH
TOTAL --- 4			
<b>(U) REFERENCE:</b> PHONCON W/ LTCOL GARCIA (484-8859) DTD 12 MAY 97			

<b>OP SILVER WAKE</b> <b>MCSF AMEMBASSY TIRANA</b> (TIRANA, ALBANIA) (28 APR - TBD)			
<b>(U) CURRENT STATUS</b>		PROVIDE SECURITY FOR THE AMEMBASSY TIRANA AND RILINDJA RIDGE HOUSING COMPOUND IN SUPPORT OP SILVER WAKE	
<b>(C) TASK ORGANIZATION</b>	<b>USMC OFF/ENL</b>	<b>USN OFF/ENL</b>	<b>COMMANDING OFFICER</b>
COMMCSF	71		LTCOL J. C. CHRISTMAN
TOTAL --- 71			
<b>(U) REFERENCE:</b> USDAO TIRANA AL SITREP #25 DTG 230847Z MAY 97			

<b>EXPLOSIVE MWD TEAMS</b> (AQABA, JORDAN) (19 MAY - 19 JUL)			
<b>(U) CURRENT STATUS</b>		TO ENHANCE FORCE PROTECTION DURING OFFLOAD/ONLOAD OPS FOR ARG/MEU IN SUPPORT OF EX INFINITE MOONLIGHT	
<b>(C) TASK ORGANIZATION</b>	<b>USMC OFF/ENL</b>	<b>USN OFF/ENL</b>	<b>COMMANDING OFFICER</b>
EXPLOSIVE MWD TEAMS	7		SGT K. J. GAUTREAUX
TOTAL --- 7			
<b>(U) REFERENCE:</b> USCINCCENT MSG DTG 151845Z MAY 97			

<b>COOPERATION AFLOAT READINESS AND TRNG</b> (CARAT 97) (6 MAY - 9 OCT)			
<b>(U) CURRENT STATUS</b> USS FREDERICKENR ENR TO KOTA KINABALU, MALAYSIA PVST, 2-5 JUN CARAT IS AN ANNUAL 7TH FLEET DEPLOYMENT ISO CINCPAC'S COOPERATIVE ENGAGEMENT STRATEGY, DESIGNED TO CONDUCT BILATERAL EXERCISES AND TRNG W/ASSOCIATION OF SOUTHEAST ASIAN NATIONS (ASEAN).			
<b>(C) TASK ORGANIZATION</b>	<b>USMC OFF/ENL</b>	<b>USN OFF/ENL</b>	<b>COMMANDING OFFICER</b>
CE, 3D MAR(-)(REIN)	5   21	2   1	MAJ D. M. KNIGHT
1/3(-)(REIN)	7   169	0   7	CAPT J. M. BRIGHT
CSSG-3	1   15	0   3	2DLT J. Y. REYES
TOTAL	13   205	2   11	
TOTAL --- 231			
<b>(C) ARMS AND EQUIPMENT IN POSSESSIONS:</b>			
<b>NUMBER</b>	<b>ITEM</b>	<b>NUMBER</b>	<b>ITEM</b>
9	AAVP-7A1	1	AAVR-7A1
<b>AMPHIB INFORMATION</b>			
USS FREDERICK		LST-1184	
<b>FUTURE PLANS</b>			
4-18 JUN		INDONESIA PHASE	
<b>(U) REFERENCE:</b> LF CARAT SITREP DTG 161600Z MAY 97			

<b>VMFA-212</b> (17 MAY - 26 JUN)			
<b>CURRENT STATUS</b>		PROVIDING SQDN SUPPORT FOR 8TH FIGHTER WING IN KUNSAN AB, KOREA	
<b>(C) TASK ORGANIZATION</b>	<b>USMC OFF/ENL</b>	<b>USN OFF/ENL</b>	<b>COMMANDING OFFICER</b>
VMFA-212	113		LTCOL R. J. KENNEDY
TOTAL---113			
<b>(C) AIRCRAFT O/H:</b>		12 X F/A-18C	

DEPLOYED FORCES

D-8

SECRET

UNCLASSIFIED

## 13TH MEU

28 AUG 97 - 28 FEB 98

PREDEPLOYMENT TRAINING PERIOD			17 MAR - 27 AUG 97			
(U) CURRENT STATUS			TRUE SITE TRNG, 22 MAY - 7 JUN			
(C) TASK ORGANIZATION		USMC OFF/ENL		USN OFF/ENL		COMMANDING OFFICER
CE, 13TH MEU		28   142		1   3		COL J. W. HEIDRICH
BLT-1/1		57   1,227		2   50		LTCOL S. A. HUMMER
HMM-164 (REIN)		67   377		1   3		LTCOL P. M. O'DONOGUE
MSSG-13		12   222		3   20		LTCOL C. P. SCHUCHARDT
TOTAL		164   1,968		7   76		
TOTAL --- 2,215						
(C) ARMS AND EQUIPMENT IN POSSESSIONS:						
NUMBER	ITEM		NUMBER	ITEM		
13	AAVP-7A1		8	LAV-25		
1	AAVC-7A1		1	LAV-C2		
6	M198		1	LAV(L)		
8	TOWS		2	LAV(M)		
1	M88		4	MIA1		
(C) AIRCRAFT O/H:						
NUMBER	TYPE		NUMBER	TYPE		
11	CH-46E		4	AH-1W		
5	CH-53E		3	UH-1N		
6	AV-8B					
AMPHIB INFORMATION						
USS PELELIU			LHA-5			
USS COMSTOCK			LSD-45			
USS JUNEAU			LPD-10			
COMPHIBRON 1			CAPT DONLON (USN)			
(C) LANDING CRAFT:						
SHIP		NUMBER	TYPE			
USS PELELIU		1	LCAC			
USS PELELIU		2	LCU			
USS COMSTOCK		3	LCAC			
FUTURE PLANS						
20 JUN - 2 JUL			FLEETEX			
(U) REFERENCE: 13TH MEU SITREP #11 DTG 161899Z MAY 97						

## 24TH MEU(SOC)

SEP 97 - MAR 98

PREDEPLOYMENT TRAINING PERIOD			APR - SEP 97			
(U) CURRENT STATUS			BLT/MSSG FIELD TRNG, A.P. HILL, 19-30 MAY			
(C) TASK ORGANIZATION		USMC OFF/ENL		USN OFF/ENL		COMMANDING OFFICER
CE, 24TH MEU		37	163	3	3	COL R. F. NATONSKI
BLT 3/6		58	1,182	4	52	LTCOL R. R. MILLS
HMM-263 (REIN)		59	311	1	4	LTCOL M. DUVA
MSSG-24		15	232	1	19	LTCOL B. L. TONNACOFF
TOTAL		169	1,888	9	78	
TOTAL --- 2,144						
(C) ARMS AND EQUIPMENT IN POSSESSIONS:						
NUMBER	ITEM		NUMBER	ITEM		
13	AAVP-7A1		4	LAV-25		
1	AAVC-7A1		2	LAV(AT)		
1	AAVR-7A1		1	LAV(L)		
6	M198		4	M1A1		
8	TOWS		1	M88		
8	81MM MORTAR					
(C) AIRCRAFT O/H:						
NUMBER	TYPE		NUMBER	TYPE		
12	CH-46E		4	AH-1W		
4	CH-53E		2	UH-1N		
6	AV-8B					
AMPHIB INFORMATION						
USS GUAM			LPH-9			
USS SHREVEPORT			LSD-12			
USS ASHLAND			LPD-48			
USS OAK HILL			LPD-51			
COMPHIBRON 2			CAPT P. L. SOWA(USN)			
(C) LANDING CRAFT:						
SHIP			NUMBER	TYPE		
USS SHREVEPORT			1	LCU		
USS ASHLAND			4	LCAC		
USS OAK HILL			1	LCU		
FUTURE PLANS						
20 JUN - 1 JUL			TRUE EX			
(U) REFERENCE: 24TH MEU SITREP #06 DTG 082359Z MAY97						



## PREDEPLOYMENT FORCES

VMFA-314					
USS NIMITZ CVN-68					
PREDEPLOYMENT TRNG PERIOD			JAN-SEP 97		
CURRENT STATUS			PREDEPLOYMENT TRAINING		
(C) TASK ORGANIZATION	USMC OFF/ENL		USN OFF/ENL		COMMANDING OFFICER
VMFA-314	17	196	1	1	LTCOL D. H. PEELER
TOTAL---215					
(C) AIRCRAFT O/H:			12 X F/A-18C		
FUTURE PLANS					
8 SEP			DEPART FOR DEPLOYMENT		
(U) REFERENCE: NAVY NOTES DTD 22 MAY 97					

VMFA-251					
USS WASHINGTON CVN-73					
PREDEPLOYMENT TRNG PERIOD			FEB-OCT 97		
CURRENT STATUS			CONDUCTING COMPTUEX IN THE VIRGIN ISLANDS THROUGH 15 JUN		
(C) TASK ORGANIZATION	USMC OFF/ENL		USN OFF/ENL		COMMANDING OFFICER
VMFA-251	15	190	1	2	LTCOL A. W. VALENTINO
TOTAL---208					
(C) AIRCRAFT O/H:			12 X F/A-18C		
FUTURE PLANS					
3 OCT			DEPART FOR DEPLOYMENT		
(U) REFERENCE:PHONCON w/VMFA-251 on 25 MAR 97 (832-7414); NAVY NOTES DTD 22 MAY					

**SECRET**  
**CONTINGENCY FORCES**  
 970530

<b>I MEF</b>	
EASTPAC CONTINGENCY	13TH MEU
I MEF READY ARG	USS PELELIU (LHA-5)
	USS COMSTOCK (LSD-45)
	USS JUNEAU (LSD-10)
ALERT MAGTF CE:	I MEF (FWD)
GCE	1/7
ACE	3D MAW(FWD)
CSSE	1ST FSSG(FWD)
<b>II MEF</b>	
II MEF ARF	24TH MEU(SOC)
II MEF READY ARG	USS GUAM (LPH-9)
	USS SHREVEPORT (LSD-12)
	USS ASHLAND (LPD-48)
	USS OAK HILL (LPD-51)
AIR CONTINGENCY FORCE	
CE	8TH MAR
GCE	2/8 (REIN)
ACE	DET, HMLA-269
CSSE	2D LSB, HQ ELEMENT
FOLLOW-ON ACB	
GCE	3/2 (REIN)
ACE	DET, HMLA-167
CSSE	DET, 2D FSSG
<b>III MEF</b>	
WESTPAC CONTINGENCY	31ST MEU CMD ELE(REIN)
GCE	1/5(REIN)
ACE	HMM-262(REIN)
CSSE	MSSG-31
AIR CONTINGENCY FORCE	
LEAD ECH GCE	1/6
LEAD ECH ACE	DET, 1ST STINGER BTRY
LEAD ECH CSSE	CSSD - 39
FOLLOW-ON GCE	3/3

## MARINE INFANTRY BATTALIONS (STATUS)

MARFORPAC					
UNIT	DEPLOYED (DATE)	COMMITTED 90 DAYS UDP 180 DAYS MEU	RETURNED (WITHIN 60 DAYS)	OPS/ LOCAL TRNG	FUTURE UDP / MEU DEPLOYMENTS
1/1		<u>13TH MEU</u> AUG 97 - FEB 98			<u>11TH MEU</u> APR - OCT 99 LOCK-ON/OCT 98
2/1	<u>15TH MEU</u> MAR - SEP 97				<u>13TH MEU</u> NOV 98 - MAY 99 LOCK-ON/MAY 97
3/1			<u>11TH MEU</u> OCT 96 - APR 97		<u>15TH MEU</u> MAR - SEP 98 LOCK-ON/SEP 97
1/4				<u>11TH MEU</u> JAN - JUL 98 LOCK-ON/JUL 97	<u>15TH MEU</u> SEP 99 - MAR 00 LOCK-ON/MAR 99
1/5	<u>UDP/ 31ST MEU</u> MAY - NOV 97				<u>UDP/ 31ST MEU</u> MAY - NOV 99 LOCK-ON/FEB 99
2/5				<u>UDP / 31ST MEU</u> NOV 97 - MAY 98 LOCK-ON/AUG 97	TBD
3/5				<u>UDP / 31ST MEU</u> MAY - NOV 98 LOCK-ON/FEB 98	<u>UDP / 31ST MEU</u> MAY - NOV 00 LOCK-ON/FEB 99
2/4			<u>UDP / 31ST MEU</u> NOV 96 - MAY 97		<u>UDP / 31ST MEU</u> NOV 98 - MAY 99 LOCK-ON/AUG 98
1/7				<u>UDP</u> FEB - AUG 98 LOCK-ON/NOV 97	<u>UDP</u> FEB - AUG 98 LOCK-ON/NOV 97
2/7				<u>UDP</u> AUG 98 - FEB 99 LOCK-ON/MAY 98	TBD
3/7	<u>UDP</u> FEB - AUG 97				<u>UDP</u> FEB - AUG 99 LOCK-ON/NOV98
3/4		<u>UDP</u> AUG 97 - FEB 98			<u>UDP</u> AUG 99 - FEB 00 LOCK-ON/MAY 99
1/3				<u>UDP</u> JAN - JUL 98 LOCK-ON/OCT 97	<u>UDP</u> OCT 99 - MAY 00 LOCK-ON/AUG 99
2/3		<u>UDP</u> JUL 97 - JAN 98			<u>UDP</u> JAN - JUL 99 LOCK-ON/OCT 98
3/3	<u>UDP</u> JAN - JUL 97				<u>UDP</u> JUL 98 - JAN 99 LOCK-ON/APR 98
<b>PAC TOTAL</b>	<b>4</b>	<b>3</b>	<b>2</b>	<b>6</b>	

# MARINE INFANTRY BATTALIONS (STATUS) (CONT)

MARFORLANT					
UNIT	DEPLOYED (DATE)	COMMITTED 90 DAYS UDP 180 DAYS MEU	RETURNED (WITHIN 60 DAYS)	OPS/ LOCAL TRNG	FUTURE UDP /MEU DEPLOYMENT
1/2	<u>22D MEU</u> MAY - OCT 97				<u>UDP</u> JUN - DEC 99 LOCK-ON/MAR 99
2/2				<u>22D MEU</u> JUN - DEC 98 LOCK-ON/DEC 97	TBD
3/2				<u>26TH MEU</u> FEB - AUG 98 LOCK-ON/SEP 97	TBD
1/6	<u>UDP</u> DEC 96 - JUN 97				<u>24TH MEU</u> NOV 98 - MAY 99 LOCK-ON/MAY 98
2/6				<u>UDP</u> DEC 97 - JUN 98 LOCK-ON/SEP 97	<u>24TH MEU</u> FEB - AUG 00 LOCK-ON/AUG 99
3/6		<u>24TH MEU</u> SEP 97 - MAR 98			<u>22D MEU</u> SEP 99 - MAR 00 LOCK-ON/MAR 99
1/8			<u>26TH MEU</u> NOV 96 - MAY 97		<u>UDP DEC 98</u> DEC 98 - JUN 99 LOCK-ON/SEP 98
2/8				<u>UDP</u> JUN - DEC 98 LOCK-ON/MAR 98	TBD
3/8		<u>UDP</u> JUN - DEC 97			<u>26TH MEU</u> APR - OCT 99 LOCK-ON/ OCT 98
<b>LANT TOTAL</b>	<b>2</b>	<b>2</b>	<b>1</b>	<b>4</b>	

MARINE CORPS TOTAL					
UNITS	DEPLOYED	COMMITTED	RETURNED (W/IN 60 DAYS)	OPS/ LOCAL TRNG	
24	6	5	3	10	

## I MEF

EXERCISE	DATE	LOCATION	UNITS	REMARKS
VMFAT-101 FTR WPNS EXERCISE	18-30 MAY	MCAS, YUMA, AZ	DETS FROM VMFAT-101	Unit Level Training
MAG-11 AMMEX 3-97	28-30 MAY	NAS, MIRAMAR, CA	DETS FROM VMFA-314, VMGR-352	Air to Air Missile Exercise
VMFA(AW)-225 DET	1-14 JUN	NELLIS AFB, NV	DETS FROM VMFA(AW)-225	Red Air Fighter Weapons school Air Exercise
BOLD ENDEAVOR	11-21 JUN	FT. BLISS, TX	DETS FROM I MEF, 1ST MARDIV, 1ST SRIG	JTF Consequence Management Exercise

## II MEF

EXERCISE	DATE	LOCATION	UNITS	REMARKS
FLEET WEEK NYC	16-30 MAY	NEW YORK CITY	DETS FROM 10TH MAR, 2D AABN, 2D TANK BN, HQBN 2D MARDIV, 2D LARBN, RECON BN, SCCO, VMA-542	Public Relations Event
SPOTEX 3-97	23 MAY- 12 JUN	VIEQUES, PR	DET, 2D ANGLICO	Naval Fire Support Spotter Training
EX MARCOT 97	9-27 JUN	SHEARWATER CANADA	DETS FROM MALS-14; VMA-223; VMGR-252	Provide support for EX MARCOT 97

## III MEF

EXERCISE	DATE	LOCATION	UNITS	REMARKS
KUNSAN BACKFILL	17 MAY - 26 JUN	KUNSAN AB, KOREA	DETS FROM VMFA-212	Provide Sqdn of aircraft in support of 8th Fighter Wing
GAIT 97-8	27-30 MAY	OKINAWA	DETS FROM HMH-465; HMM-265; HMLA-169; MASS-2; MWSS-172; 3/3(-)	Ground-Air Integrated Trng btwn Infantry BN and air support force
GAIT 97-9	15-21 JUN	OKINAWA	DETS FROM HMH-465; HMM-265; HMLA-169; MASS-2; MWSS-172; 3/7(-)	Ground-Air Integrated Trng btwn Infantry BN and air support force

## MARFORRES

EXERCISE	DATE	LOCATION	UNITS	REMARKS
CAX 7-97	7-21JUN	29 PALMS, CA	CE: 23D MAR, GCE: 2/23, ACE: MAG-41, CSSE: CSSE-43	Combined Arms Exercise
14TH MAR FIREX	15-30JUN	FT CARSON, CO	DETS FROM 14TH MAR, 4TH MAINT BN, 4TH DENTAL BN, AMMO CO, 4TH FSSG	Firing Exercise
CAX 8-97	28JUN- 12JUL	29 PALMS, CA	CE: 25TH MAR, GCE: 2/25, ACE: MAG-49, CSSE: CSSE-42	Combined Arms Exercise
AOT 1-97	12-26JUL	CORONADO, CA	DETS FROM 4TH MARDIV, 4TH MAW, 4TH FSSG	Amphibious Orientation Training

## EUCOM

EXERCISE	DATE	LOCATION	UNITS	REMARKS
NA	NA	NA	NA	NA

## SOUTHCAM

EXERCISE	DATE	LOCATION	UNITS	REMARKS
NEW HORIZON-BELIZE	4FEB- 15JUN	BELIZE CITY, BELIZE	DET, MWSG-27	Providing engineer support and conducting humanitarian and civil assistance operations

## PACOM

EXERCISE	DATE	LOCATION	UNITS	REMARKS
CARAT 97	1MAY- 1AUG	SE ASIA	1/3(-)(REIN), DET, CSC, 3D MAR, DET, 3D RECON CO(-), DET, CSSG-3	Series of bilateral naval and amphibious exercises with Republic of the Philippines and with Member States of the Association of Southeast Asian Nations (ASEAN)

## USACOM

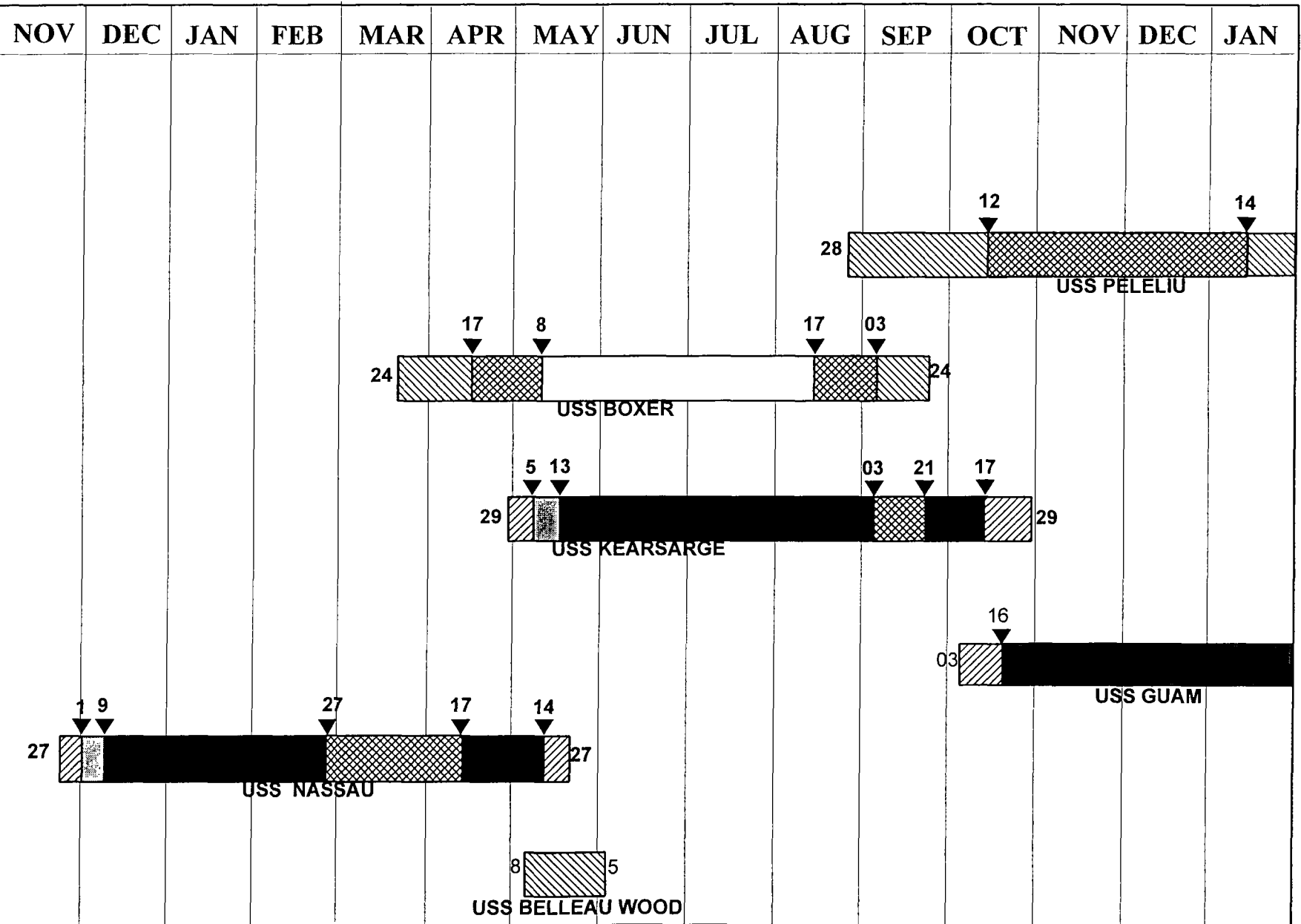
EXERCISE	DATE	LOCATION	UNITS	REMARKS
CARIB-GRENADA-97	18APR- 23JUN	PETITE MARTINIQUE, GRENADA	B CO(-)(REIN), 8TH ESB	A joint overseas trng program to conduct engineer related construction, humanitarian civic assistance and support medical readiness and trng exercises

# MEU DEPLOYMENTS

1996

1997

1998



EUCOM
  CENTCOM
  USACOM
  PACOM

EUCOM TETHER
  CENTCOM TETHER







UNCLASSIFIED

**SECRET**  
**CARRIER DEPLO IT SCHEDULE**  
 97020

CARRIER	HULL #	PAC/LANT	AOR	DHPO	TETHER IN	CHOP IN	CHOP OUT	TETHER OUT	RHPO	USMC TACAIR	COMMENTS
VINSON	CVN-70	PAC	CENTCOM	96/05/14	96/06/04	96/06/28	96/09/30	96/10/24	96/11/14		HPT SHIFT ALAMEDA-BREM FY96
ENTERPRISE	CVN-65	LANT	MED CENTCOM	96/06/30 N/A	96/07/06 N/A	96/07/12 96/10/20	96/12/10 96/11/28	N/A N/A	96/12/23 N/A		INCHOPPED CENTCOM 14 SEP DUE TO TENSIONS IN GULF
KITTY HAWK	CV-63	PAC	CENTCOM	96/10/11	96/11/01	96/11/25	97/02/25	97/03/21	97/04/11		
ROOSEVELT	CVN-71	LANT	MED CENTCOM	96/11/26 N/A	96/12/01 N/A	96/12/08 97/03/16	97/05/13 97/04/24	N/A N/A	97/05/22 N/A	VMFA-312	
KENNEDY	CVN-67	LANT	MED CENTCOM	97/04/30 N/A	97/05/05 N/A	97/05/13 97/08/17	97/10/17 97/09/25	N/A N/A	97/10/29 N/A		
CONSTELLATION	CV-64	PAC	CENTCOM	97/04/01	97/04/22	97/05/16	97/08/17	97/09/10	97/10/01	VMFA-323	
NIMITZ	CVN-68	PAC	CENTCOM	97/09/01	97/09/22	97/10/16	98/02/07		98/03/01	VMFA-314	
WASHINGTON	CVN-73	LANT	MED CENTCOM	97/10/03		97/10/16 98/02/07	98/03/23 98/03/16		98/04/03	VMFA-251	
STENNIS	CVN-74	LANT PAC	MED CENTCOM	98/02/26		98/03/11 98/05/16	98/05/16 98/07/13		98/08/26		
LINCOLN	CVN-72	PAC	CENTCOM	98/05/28		98/07/13	09/10/14		98/11/28		
EISENHOWER	CVN-69	LANT	MED CENTCOM	98/06/10		98/06/23 98/10/14	98/11/27 98/11/17		98/12/09		
VINSON	CVN-70	PAC	CENTCOM	98/11/06		98/12/20	99/03/23		99/05/06		
ENTERPRISE	CVN-65	LANT	MED CENTCOM	98/11/13		98/11/26 99/03/23	99/05/01 99/04/23		99/05/12		

**PROPOSED 99-00 SCHEDULE**

ROOSEVELT	CVN-71	LANT	MED CENTCOM	99/04/14		99/04/27 99/06/08	99/10/02 99/07/23		99/10/13	VMFA-312	
KITTY HAWK	CV-63	PAC	CENTCOM	99/07/13		99/08/27	99/11/30		00/01/13		
WASHINGTON	CVN-73	LANT	MED CENTCOM	99/09/17		99/09/30 99/12/13	00/03/05 00/01/22		00/03/16	VMFA-251	
STENNIS	CVN-74	PAC	CENTCOM	00/01/31		00/03/16	00/06/16		00/07/31		
EISENHOWER	CVN-69	LANT	MED CENTCOM	00/02/18		00/03/02 00/06/16	00/08/06 00/07/24		00/09/17		
TRUMAN	CVN-75	LANT	MED CENTCOM	00/07/20		00/08/02 00/08/12	01/01/08 00/09/11		01/01/19		
LINCOLN	CVN-72	PAC	CENTCOM	00/08/12		00/09/26	00/12/29		01/02/12		

CARRIER DEPLOYMENT  
 K-1  
**SECRET**

UNCLASSIFIED

INFANTRY BATTALIONS						
CAMP PENDLETON		29 PALMS		CAMP LEJEUNE		HAWAII
1ST MAR	5TH MAR	7TH MAR	2D MAR	6TH MAR	8TH MAR	3D MAR
1/1# (13th MEU)	1/5&	1/7	1/2# (22d MEU)	1/6*	1/8# (26th MEU)	1/3
2/1# (15th MEU)	2/5	2/7	2/2	2/6	2/8	2/3
3/1	3/5	3/7*	3/2	3/6# (24th MEU)	3/8	3/3*
1/4	2/4	3/4 (CAMPEN)				

ARTILLERY BATTALIONS									
11TH MAR				10TH MAR			12TH MAR		
CAMP PENDLETON		29 PALMS		CAMP LEJEUNE			HAWAII		OKINAWA
BN	BTRY	BN	BTRY	BN	BTRY	BN	BTRY	BN	BTRY
1/11	A#, B, C#	3/11	I, K, L	1/10	A#, B, C	1/12	A, B*, C	3/12	L
2/11	E&, F, G			2/10	E#, F, G			2/11	E&
5/11	R, S# T, K 3/12			3/10	I#, K, L			5/10	S*
				5/10	R, S*, T, I 3/12			1/12	B*

FIXED-WING SQUADRONS					
MIRAMAR	EL TORO	YUMA	CHERRY PT	BEAUFORT	FUTENMA
MAG-11	MAG-11	MAG-13	MAG-14	MAG-31	MAG-36
VMFA(AW)-121	VMFAT-101	VMA-211	VMAQ-1	VMFA-115	VMGR-152
VMFA(AW)-225	VMGR-352	VMA-214!	VMAQ-2	VMFA-122*	
VMFA(AW)-242*		VMA-311!^	VMAQ-3@	VMFA-251+	
VMFA-232		VMA-513!	VMAQ-4	VMFA-312	
VMFA-323+		VMU-1	VMA-223!	VMFA(AW)-224@	
VMFA-314+			VMA-231!	VMFA(AW)-332	
			VMA-542!	VMFA(AW)-533	
			VMGRT-253		
			VMAT-203		
			VMGR-252		
			VMU-2@		
					IWAKUNI
					MAG-12
					VMFA-212

ROTARY- WING SQUADRONS							
CAMP PENDLETON	TUSTIN		EL TORO	NEW RIVER		FUTENMA	HAWAII
MAG-39	MAG-16		MAG-16	MAG-26	MAG-29	MAG-36	1ST MAW
HMLA-169&*!	HMM-268	HMH-462!	%HMM-161#	HMLA-167!	HMLA-269!	HMM-262	HMH-362\$
HMLA-267	HMH-361	HMH-465&*!	%HMM-163	HMM-261#	HMM-162	HMM-265#	HMH-363\$
HMLA-367	HMM-165	HMH-466!	%HMM-164#	HMM-264	HMM-263#		HMH-366\$
HMLA-369!			%HMM-166	HMM-266	HMM-365#		HMH-463\$
HMT-303			HMM-364	HMH-461!	HMH 464!		HMT-301\$
				HMT-204	HMT-302		

INFANTRY BATTALIONS					
4TH MARINES					
CAMP SCHWAB			CAMP HANSEN		
UNIT	SOURCE	DATE	UNIT	SOURCE	DATE
1/6	6TH MAR	DEC 96 - JUN 97	3/3	3D MAR	JAN - JUL 97
3/7	7TH MAR	FEB - AUG 97	1/5	5TH MAR	MAY - NOV 97
FIXED -WING / ROTARY-WING SQUADRONS					
IWAKUNI			OKINAWA		
MAG-12			MAG-36		
UNIT	SOURCE	DATE	UNIT	SOURCE	DATE
VMFA-122	MAG-31	JAN - JUL 97	HMH-465	MAG-16	MAY - NOV 97
VMFA(AW)-242	MAG-11	MAR - SEP 97	HMLA-169	MAG-39	MAY - NOV 97
DET VMA-311	MAG-13	MAY - NOV 97			
MARFORRES					
INFANTRY BATTALION					
SAN RAFAEL, CA		KANSAS CITY, MO		WORCESTER, MA	
23D MARINES		24TH MARINES		25TH MARINES	
1/23	HOUSTON TX	1/24	DETROIT MI	1/25	CAMP EDWARDS MA
2/23	ENCINO CA	2/24	CHICAGO IL	2/25	GARDEN CITY NY
3/23	NEW ORLEANS LA	3/24	BRIDGETON MO	3/25	BROOKPARK OH
FIXED-WING SQUADRONS					
DALLAS			MARIETTA		
MAG-41			MAG-42		
VMA-124	DALLAS TX	VMFA-142	CECIL FIELD FL		
VMFA-112	DALLAS TX	WILLOW GROVE			
VMGR-234	FT WORTH TX	MAG-49			
MIRAMAR			VMA-131	WILLOW GROVE PA	
MAG-46			VMFA-321	ANDREWS AFB MD	
VMFA-134	MIRAMAR CA	VMGR-452	NEWBURGH NY		
VMFT-401	YUMA AZ				
ROTARY WING SQUADRON					
MARIETTA		MIRAMAR		WILLOW GROVE	
MAG-42		MAG-46		MAG-49	
HMLA-775, DET A	BELLE CHASSE LA	HMLA-775	CAMPEN CA	HMH-772	WILLOW GROVE PA
HMM-774	NORFOLK VA	HMM-764	EL TORO CA		
HMLA-773	MARIETTA GA	HMH-769	NAS ALAMEDIA		
* CURRENT UDP UNIT @ OPERATIONAL DEPLOYMENT # MEU MSE ! MEU COMPONENT \$ CH-53D SQDN ^ 6 A/C ISO 31ST MEU + CARRIER INTEGRATION & UDP IN SUPPORT OF 31ST MEU % TEMPORARY UNTIL DIR TO PCS TO MIRAMAR					

### AMPHIB HOMEPORTS AND DEPLOYMENT W/O MARINES

**NORFOLK, VA**  
USS WASP (LHD-1)  
USS KEARSARGE (LHD-3)  
USS NASSAU (LHA-4)  
USS CARTER HALL (LSD-50)  
USS GUAM (LPH-9)  
USS JUNEAU (LPD-10)  
USS SHREVEPORT (LPD-12)  
USS NASHVILLE (LPD-13)  
USS PONCE (LPD-15)

**AFLOAT COMMAND POST**  
VIC LONG ISLAND, NY  
USS TRENTON (LPD-14)



**SAN DIEGO, CA**  
USS NEW ORLEANS (LPH-11)  
USS PELELIU (LHA-5)  
USS ESSEX (LHD-2)  
USS BOXER (LHD-4)  
USS OGDEN (LPD-5)  
USS CLEVELAND (LPD-7)  
USS DENVER (LPD-9)  
USS ANCHORAGE (LSD-36)  
USS MT VERNON (LSD-39)  
USS FT FISHER (LSD-40)  
USS COMSTOCK (LSD-45)  
USS HARPERS FERRY (LSD-49)

**LITTLE CREEK, VA**  
USS PORTLAND (LSD-37)  
USS PENSACOLA (LSD-38)  
USS WHIDBEY ISLAND (LSD-41)  
USS ASHLAND (LSD-48)  
USS OAK HILL (LSD-51)

**SASEBO, JA**  
USS BELLEAU WOOD (LHA-3)  
USS DUBUQUE (LPD-8)  
USS FT MCHENRY (LSD-43)  
USS GERMANTOWN (LSD-42)

MARITIME PREPOSITIONING SHIPS/CLOSURE TIMES TO KEY LOCATIONS (AT 16KTS SOA)  
(ESTIMATED LOCATIONS FOR 300300L MAY 97)

MPSRON-1  
NORFOLK, VA  
MV PLESS

MPSRON-1  
CASCAIS, PORTUGAL  
MV OBREGON

MPSRON-1  
ROTA, SP  
MV BOBO  
MV KOCOK

MPSRON-2  
ENR JACKSONVILLE,  
FL  
MV BONNYMAN

MPSRON-2  
DIEGO GARCIA  
MV HAUGE  
MV ANDERSON  
MV BAUGH  
MV PHILLIPS

MPSRON-3  
MV WILLIAMS/SAIP  
MV LUMMUS/SAIP  
MV BUTTON/GUAM  
MV LOPEZ/SAIP

CLOSURE FROM GUAM/SAIPAN	
PHILIPPINES	4.0 DAYS
KOREA	4.8 DAYS
STR OF HORMUZ	15.5 DAYS
PANAMA CANAL	20.8 DAYS

CLOSURE FROM DIEGO GARCIA	
SUEZ CANAL	8.5 DAYS
STR OF HORMUZ	4.0 DAYS
KOREA	13.9 DAYS



## MARINE CORPS SECURITY FORCES LOCATION

<b>MARINE CORPS SECURITY FORCES</b>			
UNIT	LOCATION	OFF	ENL
<b>MARINE CORPS SECURITY FORCE BATTALION</b>			
HQ, MCSFBN (COL W.H.PARRISH)	NORFOLK, VA	21	231
FAST COMPANY	NORFOLK, VA	8	294
MCSF TRAINING COMPANY	CHESAPEAKE, VA	9	86
<b>MARINE CORPS SECURITY FORCE COMPANIES</b>			
ASU, BAHRAIN		3	137
KEFLAVIK, ICELAND		2	71
NAPLES, ITALY		2	112
DETACHMENT, SOUDA BAY, CRETE		2	52
ROOSEVELT ROADS, PUERTO RICO(SEBANA SECA)		2	37
ROTA, SPAIN		2	58
LONDON, UNITED KINGDOM		3	72
NORTH ISLAND, CALIFORNIA		5	225
KINGS BAY, GEORGIA		9	344
PATUXENT RIVER, MARYLAND		2	68
YORKTOWN, VIRGINIA		6	227
BANGOR, WASHINGTON		9	471
<b>MCSF CADRES</b>			
18 OVERSEAS	59 CONUS	4	140
<b>MARINE DETACHMENTS AFLOAT</b>			
USS ABRAHAM LINCOLN (CVN 72)	ALAMEDA, CA	1	20
USS STENNIS (CVN-74)	NORFOLK, VA	1	24
USS CARL VINSON (CVN 70)	ALAMEDA, CA	1	18
USS CONSTELLATION (CV 64)	NORTH ISLAND, CA	1	24
USS ENTERPRISE (CVN-65)	NORFOLK, VA	1	24
USS GEORGE WASHINGTON (CVN 73)	NORFOLK, VA	1	24
USS INDEPENDENCE (CV 62)	YOKOSUKA, JAPAN	1	22
USS JOHN F. KENNEDY (CV 67)	MAYPORT, FL	1	26
USS KITTY HAWK (CV 63)	SAN DIEGO, CA	1	27
USS NIMITZ (CVN-68)	BREMERTON, WA	1	18
USS THEODORE ROOSEVELT (CVN 71)	NORFOLK, VA	1	24
<b>MARINE CORPS SECURITY FORCE BATTALION TOTAL</b>		100	2,876
<b>MARINE BARRACKS</b>			
GUANTANAMO BAY, CUBA	COL R. C. BAMFORD II	22	370
YOKOSUKA, JAPAN	COL W.C. GRUBB, JR.	9	158
8TH AND I, WASHINGTON, DC	COL D.G. DOTERRER	91	1,237
<b>MARINE BARRACKS TOTAL</b>		122	1,765
<b>MCSF BATTALION TOTAL</b>		100	2,876
<b>MARINE CORPS SECURITY FORCES TOTAL</b>		222	4,641

## MARINE CORPS SECURITY GUARD LOCATIONS

COUNTRY	CITY	OFF	ENL
HEADQUARTERS COMPANY, QUANTICO, VA		11	91
COUNTRY	CITY	OFF	ENL
COMPANY A, FRANKFURT		3	4
COMMANDING OFFICER	LTCOL MEADE W M		
AUSTRIA	VIENNA	0	20
BULGARIA	SOFIA	0	6
CROATIA	ZAGREB	0	6
CZECH REPUBLIC	PRAGUE	0	10
FINLAND	HELSINKI	0	10
GERMANY	FRANKFURT	0	11
GERMANY	BERLIN	0	11
GERMANY	BONN	0	15
GREECE	ATHENS	0	11
HUNGARY	BUDAPEST	0	10
KAZAKHSTAN	ALMATY	0	6
POLAND	WARSAW	0	10
ROMANIA	BUCHAREST	0	6
RUSSIA	ST. PETERSBURG	0	6
RUSSIA	MOSCOW	0	26
SERBIA	BELGRADE	0	11
TURKEY	ISTANBUL	0	8
TURKEY	ANKARA	0	8
UKRAINE	KIEV	0	6
<b>SUBTOTAL</b>		<b>3</b>	<b>201</b>
COUNTRY	CITY	OFF	ENL
COMPANY B, NICOSIA		3	4
COMMANDING OFFICER	LTCOL POMFRET J J		
ALGERIA	ALGIERS	0	6
CYPRUS	NICOSIA	0	8
BAHRAIN	MANAMA	0	7
EGYPT	CAIRO	0	30
ISRAEL	TEL AVIV	0	10
ISRAEL	JERUSALEM	0	8
JORDAN	AMMAN	0	9
KUWAIT	KUWAIT CITY	0	8
MOROCCO	RABAT	0	6
OMAN	MUSCAT	0	6
PAKISTAN	ISLAMABAD	0	8
PAKISTAN	KARACHI	0	7
SAUDI ARABIA	JEDDAH	0	6
SAUDI ARABIA	RIYADH	0	9



## MARINE CORPS SECURITY GUARD LOCATIONS

SYRIA	DAMASCUS	0	7
TUNISIA	TUNIS	0	6
COMPANY B CON'T			
UNITED ARAB EMIRATES	ABU DHABI	0	6
YEMEN	SANAA	0	7
<b>SUBTOTAL</b>		<b>3</b>	<b>158</b>
<b>COUNTRY</b>	<b>CITY</b>	<b>OFF</b>	<b>ENL</b>
COMPANY C, BANGKOK		3	4
COMMANDING OFFICER	LTCOL COOKE C E		
AUSTRALIA	CANBERRA	0	6
BANGLADESH	DHAKA	0	6
BURMA	RANGOON	0	6
CHINA	BEIJING	0	13
CHINA	SHANGHAI	0	6
HONG KONG		0	9
INDIA	NEW DEHLI	0	12
INDONESIA	JAKARTA	0	10
JAPAN	TOKYO	0	16
MALAYSIA	KUALA LUMPUR	0	6
NEPAL	KATHMANDU	0	6
PHILIPPINES	MANILA	0	10
SINGAPORE	SINGAPORE	0	8
SOUTH KOREA	SEOUL	0	10
SRI LANKA	COLOMBO	0	8
THAILAND	BANGKOK	0	10
<b>SUBTOTAL</b>		<b>3</b>	<b>146</b>
<b>COUNTRY</b>	<b>CITY</b>	<b>OFF</b>	<b>ENL</b>
COMPANY D, FT LAUDERDALE		4	4
COMMANDING OFFICER	LTCOL HITCHCOCK N E		
ARGENTINA	BUENOS AIRES	0	7
BAHAMAS	NASSAU	0	6
BARBADOS	BRIDGETOWN	0	6
BOLIVIA	LA PAZ	0	8
BRAZIL	BRASILIA	0	8
BRAZIL	RIO DE JANEIRO	0	8
BRAZIL	SAO PAULO	0	7
CHILE	SANTIAGO	0	8
COLOMBIA	BOGOTA	0	13
COSTA RICA	SAN JOSE	0	7
CUBA	HAVANA	0	10
DOMINICAN REPUBLIC	SANTO DOMINGO	0	6
ECUADOR	QUITO	0	7

## MARINE CORPS SECURITY GUARD LOCATIONS

EL SALVADOR	SAN SALVADOR	0	14
GUATEMALA	GUATEMALA CITY	0	9
GUYANA	GEORGETOWN	0	0
HAITI	PORT AU PRINCE	0	8
COMPANY D CON'T			
HONDURAS	TEGUCIGALPA	0	12
JAMAICA	KINGSTON	0	6
MEXICO	MEXICO CITY	0	13
NICARAGUA	MANAGUA	0	8
PANAMA	PANAMA CITY	0	7
PARAGUAY	ASUNCION	0	6
PERU	LIMA	0	13
SURINAME	PARAMARIBO	0	0
TRINIDAD	PORT OF SPAIN	0	6
URUGUAY	MONTEVIDEO	0	6
VENEZUELA	CARACAS	0	8
<b>SUBTOTAL</b>		<b>4</b>	<b>221</b>
<b>COUNTRY</b>	<b>CITY</b>	<b>OFF</b>	<b>ENL</b>
COMPANY E, FRANKFURT		3	4
COMMANDING OFFICER	LTCOL HOSLER L D		
BELGIUM	BRUSSELS	0	23
CANADA	OTTAWA	0	6
DENMARK	COPENHAGEN	0	6
FRANCE	PARIS	0	26
IRELAND	DUBLIN	0	6
ITALY	ROME	0	19
HELSINKI	HELSINKI	0	10
MALTA	VALETTA	0	6
NETHERLANDS	THE HAGUE	0	10
NORWAY	OSLO	0	6
PORTUGAL	LISBON	0	8
SPAIN	MADRID	0	10
SWEDEN	STOCKHOLM	0	6
SWITZERLAND	BERN	0	6
SWITZERLAND	GENEVA	0	10
UNITED KINGDOM	LONDON	0	20
<b>SUBTOTAL</b>		<b>3</b>	<b>182</b>
<b>COUNTRY</b>	<b>CITY</b>	<b>OFF</b>	<b>ENL</b>
COMPANY F, NAIROBI		3	4
COMMANDING OFFICER	LTCOL MCCLESKEY		
BOTSWANA	GABORONE	0	6
BURUNDI	BUJUMBURA	0	6

## MARINE CORPS SECURITY GUARD LOCATIONS

DJIBOUTI	DJIBOUTI	0	6
ETHIOPIA	ADDIS ABABA	0	6
KENYA	NAIROBI	0	8
MADAGASCAR	ANTANANARIVO	0	0
MOZAMBIQUE	MAPUTO	0	6
SOUTH AFRICA	CAPETOWN	0	6
COMPANY F CON'T			
SOUTH AFRICA	PRETORIA	0	12
SUDAN	KHARTOUM	0	0
TANZANIA	DAR ES SALAAM	0	7
UGANDA	KAMPALA	0	6
ZAMBIA	LUSAKA	0	6
ZIMBABWE	HARARE	0	6
<b>SUBTOTAL</b>		<b>3</b>	<b>85</b>
<b>COUNTRY</b>	<b>CITY</b>	<b>OFF</b>	<b>ENL</b>
COMPANY G, ABIDJAN		3	4
COMMANDING OFFICER	LTCOL WALKER M W		
CAMEROON	YAOUNDE	0	6
CHAD	N'DJAMENA	0	5
CONGO	BRAZZAVILLE	0	6
GHANA	ACCRA	0	6
GUINEA	CONAKRY	0	6
IVORY COAST	ABIDJAN	0	7
LIBERIA	MONROVIA	0	7
MALI	BAMAKO	0	6
NIGER	NIAMEY	0	6
NIGERIA	LAGOS	0	11
SENEGAL	DAKAR	0	7
SIERRA LEONE	FREETOWN	0	6
TOGO	LOME	0	6
DEMOCRATIC REPUBLIC OF CONGO	KINSHASA	0	6
<b>SUBTOTAL</b>		<b>3</b>	<b>95</b>
HEADQUARTERS CO, QUANITICO, VA		11	91
COMPANY A FRANKFURT		3	201
COMPANY B NICOSIA		3	158
COMPANY C BANGKOK		3	146
COMPANY D , FT LAUDERDALE		4	221
COMPANY E FRANKFURT		3	182
COMPANY F NAIROBI		3	85
COMPANY G ABIDJAN		3	95
<b>TOTAL</b>		<b>39</b>	<b>1,179</b>

UNCLASSIFIED

## OPERATING FORCES COMMANDERS AND LOCATIONS

970530

UNCLASSIFIED

UNIT	RANK	NAME	HOME LOCATION
<b>MARFORPAC</b>			
MARFORPAC	LTGEN	HOWELL J D	CAMP SMITH HI
DEPCDR	MAJGEN	BEDARD E R	CAMP SMITH HI
C/S	COL	WEH A E	CAMP SMITH HI
HQSVC BN	COL	MURRAY S E	CAMP SMITH HI
USMARCENT	COL	HOUSTON D P	MACDILL AFB
USMARFORK	COL	PARKER R E	KOREA
1ST RADIO BN	COL	INGOLD R J	MCB KBAY HI
<b>I MEF</b>			
I MEF	LTGEN	FULFORD C W JR	MCB CAMPEN CA
DEPCDR	BGEN	LANGSTON E R JR	MCB CAMPEN CA
C/S	COL	CORTEZ C	MCB CAMPEN CA
<b>1ST SRI GROUP</b>	COL	HEMLER J F	MCB CAMPEN CA
1ST ANGLICO (-)	LTCOL	BARNES B M	MCB CAMPEN CA
1ST INTEL CO	LTCOL	GRIFFIN D J	MCB CAMPEN CA
1ST FORECON CO	LTCOL	THOMAS J M	MCB CAMPEN CA
9TH COMM BN	LTCOL	BROOKS T E	MCB CAMPEN CA
HQSVC CO	LTCOL	BICKHAM E	MCB CAMPEN CA
<b>11TH MEU(SOC)</b>	COL	MOORE T L JR	MCB CAMPEN CA
BLT 3/1	LTCOL	SOVACOO M A	MCB CAMPEN CA
HMM-166 (REIN)	LTCOL	MCMEANS S	EL TORO CA
MSSG-11	LTCOL	GERLAUGH R E	MCB CAMPEN CA
<b>13TH MEU</b>	COL	HEIDRICH J W	MCB CAMPEN CA
BLT 1/1	LTCOL	HUMMER S A	MCB CAMPEN CA
HMM-164 (REIN)	LTCOL	O'DONOGUE P M	EL TORO CA
MSSG-13	LTCOL	SCHUCHARDT C P	MCB CAMPEN CA
<b>15TH MEU(SOC)</b>	COL	WHITLOW W A	MCB CAMPEN CA (D)
BLT-2/1	LTCOL	INGHRAM J D	MCB CAMPEN CA (D)
HMM-161(REIN)	LTCOL	HASLAM A M	EL TORO CA (D)
MSSG-15	LTCOL	GODFREY M J	MCB CAMPEN CA (D)
<b>1ST MARDIV</b>	MAJGEN	ADMIRE J H	MCB CAMPEN CA
ASSIST DIV CMDR	COL	TODD J R	MCB CAMPEN CA
C/S	COL	STUDENKA J M	MCB CAMPEN CA
HQBN, 1ST MARDIV	COL	KELLY T T	MCB CAMPEN CA
1ST CBT ENGR BN	LTCOL	MUSCA J I	MCB CAMPEN CA
1ST TANK BN	LTCOL	CARLTON R B	MCAGCC 29PALMS CA
1ST LAR BN	LTCOL	SWARD T B	MCB CAMPEN CA
3D LAR BN	LTCOL	TOOLAN J A JR	MCAGCC 29PALMS CA

FMF COMMANDERS AND LOCATIONS

Q-1

UNCLASSIFIED

UNCLASSIFIED

UNIT	RANK	NAME	HOME LOCATION
3D AAV BN	LTCOL	BYRD R R	MCB CAMPEN CA
<b>1ST MARINES</b>	COL	MCALEER R T	MCB CAMPEN CA
1ST BN, 1ST MAR	LTCOL	HUMMER S A	MCB CAMPEN CA
2D BN, 1ST MAR	LTCOL	INGHRAM J	MCB CAMPEN CA (D)
3D BN, 1ST MAR	LTCOL	SOVACOO L M A	MCB CAMPEN CA
1ST BN, 4TH MAR	LTCOL	HOPPER H	MCB CAMPEN CA
<b>5TH MARINES</b>	COL	GRIFFIN B P	MCB CAMPEN CA
1ST BN, 5TH MAR	LTCOL	BOGGS J T JR	MCB CAMPEN CA (D)
2D BN, 5TH MAR	LTCOL	LINNEBUR D	MCB CAMPEN CA
3D BN, 5TH MAR	LTCOL	O'KEEFE K	MCB CAMPEN CA
2D BN, 4TH MAR	LTCOL	DURRANT J L	MCB CAMPEN CA (D)
<b>7TH MARINES</b>	COL	WALSH J P	MCAGCC 29PALMS CA
1ST BN, 7TH MAR	LTCOL	JOHNSON M	MCAGCC 29PALMS CA
2D BN, 7TH MAR	LTCOL	BOURGEOIS G C	MCAGCC 29PALMS CA
3D BN, 7TH MAR	LTCOL	LAUER G S	MCAGCC 29PALMS CA (D)
3D BN, 4TH MAR	LTCOL	HOLLAR O L	MCB CAMPEN CA
<b>11TH MARINES</b>	COL	WEBER J F	MCB CAMPEN CA
1ST BN, 11TH MAR	LTCOL	KARCHER D	MCB CAMPEN CA
2D BN, 11TH MAR	LTCOL	MARLETTO M P	MCB CAMPEN CA
3D BN, 11 TH MAR	LTCOL	PINO G	MCAGCC 29PALMS CA
5TH BN, 11TH MAR	LTCOL	MONTGOMERY D	MCB CAMPEN CA
<b>3D MAW</b>	MAJGEN	MCCORKLE F	MCAS EL TORO CA
AWC	BGEN	BOLDEN C F JR	NAS MIRAMAR CA
MWHS-3	LTCOL	WEIGL O W	MCAS EL TORO CA
<b>MWSG-37</b>	COL	DYCK B E	MCAS EL TORO CA
AGSE-173	LTCOL	CHRISTIAN P C	MCAGCC 29PALMS CA
MWSS-371	LTCOL	COULTER A	MCAS YUMA AZ
MWSS-372	LTCOL	ROGERS J A	MCAS CAMPEN CA
MWSS-373	LTCOL	FREED G H	MCAS EL TORO CA
MWSS-374	LTCOL	MCPMAHON R D	MCAS TUSTIN CA
<b>MACG-38</b>	COL	FLEMING D L	MCAS EL TORO CA
MACS-1	LTCOL	CARMO D V	MCAS CAMPEN CA
MACS-7	LTCOL	LOFTIS D M	MCAS YUMA AZ
MATCS-38	LTCOL	DYROFF S J	MCAS EL TORO CA
MWCS-38	LTCOL	DUER L F	MCAS EL TORO CA
MASS-3	LTCOL	WASHINGTON C	MCAS CAMPEN CA
1ST LAAM BN	LTCOL	MCLAWHORN D W	MCAS YUMA AZ

UNIT	RANK	NAME	HOME LOCATION
3D LAAD BN	LTCOL	ELKINS S T	MCAS CAMPEN CA
<b>MAG-11</b>	COL	COLLINS J M II	NAS MIRAMAR CA
MALS-11	LTCOL	DIAZ G B	NAS MIRAMAR CA
VMFA-232	LTCOL	MITCHELL C F	NAS MIRAMAR CA
VMFA-314	LTCOL	PEELER D H	NAS MIRAMAR CA
VMFA-323	LTCOL	PRIEST R W	NAS MIRAMAR CA
VMFA(AW)-121	LTCOL	MACAK W C	NAS MIRAMAR CA
VMFA(AW)-225	LTCOL	MARRIOTT M A	NAS MIRAMAR CA
VMFA(AW)-242	LTCOL	CHAMPION A K	NAS MIRAMAR CA (D)
VMFAT-101	COL	BENES T A	MCAS EL TORO CA
VMGR-352	LTCOL	DONATO J P	MCAS EL TORO CA
<b>MAG-13</b>	COL	CURRER R	MCAS YUMA AZ
MALS-13	LTCOL	WIECKOWSKI W	MCAS YUMA AZ
VMA-211	LTCOL	KREJMAS J J	MCAS YUMA AZ
VMA-214	LTCOL	SIDERS R	MCAS YUMA AZ
VMA-311	LTCOL	BOLIN M	MCAS YUMA AZ
VMA-513	LTCOL	BICK D W	MCAS YUMA AZ
VMU-1	MAJ	LOTT D	MCAS YUMA AZ
<b>MAG-16</b>	COL	PETTINE J F	MCAS TUSTIN CA
MALS-16	LTCOL	PEECOCK M S	MCAS TUSTIN CA
HMH-361	LTCOL	MURRAY W R	MCASTUSTIN CA
HMH-462	LTCOL	PAGE J E	MCAS TUSTIN CA
HMH-465	LTCOL	DOYLE S A	MCAS TUSTIN CA (D)
HMH-466	LTCOL	CROISETIERE P	MCAS TUSTIN CA
HMM-161	LTCOL	HASLAM A M	MCAS EL TORO CA (D)
HMM-163	LTCOL	FOX R C	MCAS EL TORO CA
HMM-164	LTCOL	O'DONOGUE P M	MCAS EL TORO CA
HMM-165	LTCOL	RASMUSSEN R M	MCAS EL TORO CA
HMM-166	LTCOL	MCMEANS S R	MCAS EL TORO CA
HMM-268	LTCOL	ENOCH J T	MCAS EL TORO CA
HMM-364	LTCOL	YINGLING G	MCAS EL TORO CA
<b>MAG-39</b>	COL	AGUILAR M J	MCB CAMPEN CA
MALS-39	LTCOL	SCHULTZ M G	MCB CAMPEN CA
HMLA-169	LTCOL	MILLS S E	MCB CAMPEN CA (D)
HMLA-267	LTCOL	GRIFFIN T W	MCB CAMPEN CA
HMLA-367	LTCOL	CALDWELL G W	MCB CAMPEN CA
HMLA-369	LTCOL	GARDINER K P	MCB CAMPEN CA

UNIT	RANK	NAME	HOME LOCATION
HMT-303	LTCOL	GOODMAN G L	MCB CAMPEN CA
1ST FSSG	BGEN	LANGSTON E R JR	MCB CAMPEN CA
C/S	COL	COLLENBORNE G N	MCB CAMPEN CA
HQSVC BN(-)	LTCOL	FONTAINE G P	MCB CAMPEN CA
1ST MAINT BN(-)	LTCOL	DODD S P	MCB CAMPEN CA
7TH MT BN(-)	LTCOL	LADD P L	MCB CAMPEN CA
1ST SUPPLY BN(-)	COL	JAMES P A	MCB CAMPEN CA
7TH ENGR SPT BN	LTCOL	BOWER J F	MCB CAMPEN CA
1ST LANDING SPT BN	LTCOL	BOYD M D	MCB CAMPEN CA
1ST DENTAL BN	CAPT	TURNER C I (USN)	MCB CAMPEN CA
1ST MEDICAL BN	CDR	FLETCHER R J JR (USN)	MCB CAMPEN CA
CSSG-1	COL	SWANSTROM M E	MCAGCC 29PALMS CA
CSS DET-14	CAPT	HAVILAND J K	MCAS EL TORO CA
CSS DET-16	MAJ	KLEUGEL D M	MCAS YUMA AZ
1ST FSSG (FWD)	COL	HEAD J W	MCB CAMPEN CA
<b>III MEF</b>			
III MEF	MAJGEN	ROLLINGS W E	CAMP COURTNEY
DEPCG	BGEN	KRUPP D T	CAMP COURTNEY
C/S	COL	CLANCEY D E	CAMP COURTNEY
31ST MEU	COL	YOUNG D H	CAMP HANSEN
1ST BN, 5TH MAR	LTCOL	BOGGS J T JR	CAMP HANSEN
HMM-262	LTCOL	HARDEE W E	MCAS FUTENMA
MSSG-31	LTCOL	CHANDLER J W	CAMP KINSER
H&S BN III MEF	COL	ANDERSON G W	CAMP HANSEN
7TH COMM BN	LTCOL	FEBUARY W S	CAMP HANSEN
5TH FORECON CO	MAJ	COOK W C	CAMP HANSEN
3D MARDIV	MAJGEN	AYRES R P JR	CAMP COURTNEY
C/S	COL	INGHRAM R B	CAMP COURTNEY
HQ BN, 3D MARDIV	COL	BRADLEY G R	CAMP COURTNEY
COMBAT ASSAULT BN	LTCOL	HOWARD J D	CAMP SCHWAB
3D MARINES	COL	LENARD J D	MCB KBAY HI
1ST BN, 3D MAR	LTCOL	GREGORY T E	MCB KBAY HI
2D BN, 3D MAR	LTCOL	BATES J R	MCB KBAY HI
1ST BN, 12TH MAR	LTCOL	VIETTI K A	MCB KBAY HI
4TH MARINES	COL	JOHNSON S T	CAMP SCHWAB
1ST BN, 6TH MAR	LTCOL	SPARKS J K	CAMP SCHWAB (D)
3D BN, 7TH MAR	LTCOL	LAUER G S	CAMP SCHWAB
3D BN, 3D MAR	LTCOL	SPOSATO L P JR	CAMP HANSEN (D)
12TH MARINES	COL	SUPKO L M	CAMP FOSTER

3D BN, 12TH MAR	LTCOL	BARILE D J	CAMP FOSTER
<b>1ST MAW</b>	MAJGEN	KNUTSON B B	CAMP BUTLER
AWC	VACANT	VACANT	CAMP BUTLER
C/S	COL	BOWLING W L	CAMP BUTLER
MWHS-1	LTCOL	HOLCOMB E L	CAMP FOSTER
<b>MWSG-17</b>	COL	LEHNER W E	CAMP FOSTER
MWSS-171	MAJ	ANDERSON B C	MCAS IWAKUNI
MWSS-172	LTCOL	ROBERTS S E	MCAS FUTENMA
<b>MACG-18</b>	COL	HUGHES R D	MCAS FUTENMA
MACS-4	LTCOL	LEE J S	MCAS FUTENMA
MTACS-18	LTCOL	GRIMES J M	MCAS FUTENMA
MWCS-18	LTCOL	ADKINS F P	CAMP FOSTER
MASS-2	LTCOL	CREAMER R L	MCAS FUTENMA
1ST STINGER BATTERY	MAJ	WILLIAMS T M	MCAS FUTENMA
<b>MAG-12</b>	COL	DAVIS C E	MCAS IWAKUNI
MALS-12	LTCOL	FOREMAN S H	MCAS IWAKUNI
DET VMA-311	LTCOL	REIF C W	MCAS IWAKUNI
VAQ-138	CDR	SMOLANA K V	MCAS IWAKUNI
VMFA-115	LTCOL	LEVESQUE R J JR	MCAS IWAKUNI
VMFA-212	LTCOL	GUILFOYCE W F	MCAS IWAKUNI
VMFA(AW)-121	LTCOL	MACAK W C	MCAS IWAKUNI (D)
<b>MAG-36</b>	COL	HILL K W	MCAS FUTENMA
MAL-36	LTCOL	FLYNN C M	MCAS FUTENMA
HMH-361	LTCOL	MURRAY W	MCAS FUTENMA (D)
HMLA-267	LTCOL	GRIFFIN J W	MCAS FUTENMA (D)
HMM-262	LTCOL	BARKER M J	MCAS FUTENMA
HMM-265	LTCOL	JAMES J W	MCAS FUTENMA
VMGR-152	LTCOL	ROBINSON J R	MCAS FUTENMA
<b>3D FSSG</b>	BGEN	BYRUM B B	CAMP KINSER
C/S	COL	BOAK M P	CAMP KINSER
HQSVC BN	COL	DOWDEN F G JR	CAMP KINSER
3D MAINT BN(-)	LTCOL	MCTAGUE M S	CAMP KINSER
3D SUPPLY BN(-)	COL	BORGERT G D	CAMP KINSER
9TH ENGR SPT BN	LTCOL	SMITH R J	CAMP HANSEN
3D SPT BN	COL	LOTT B M	CAMP FOSTER
3D DENTAL BN	CAPT	TURNER R J (USN)	CAMP FOSTER
3D MEDICAL BN	CAPT	LUNDY J A (USN)	CAMP HANSEN
CSSD-36	LTCOL	FELDER T J	MCAS IWAKUNI
CSSG-3	COL	SKIPPER C O	MCB KBAY HI



MSSG-31	LTCOL	CHANDLER J W	CAMP KINSER
<b>III MEF FORCES HI</b>			
AVN SPT ELEMENT	BGEN	BICE D F	MCB KBAY HI
MARAVNLOGSPTTELE	COL	BROUSSEAU M J	MCB KBAY HI
HMH-366	LTCOL	LINDBOE D T	MCB KBAY HI
HMH-463	LTCOL	JOHNSON D C	MCB KBAY HI
HMH-363	LTCOL	BURCHNALL R K	MCB KBAY HI
HMH-362	LTCOL	REUSS G C	MCB KBAY HI
HMT-301	LTCOL	REDMAN J M	MCB KBAY HI
HMT-301	LTCOL	GLEASON P B	MCB KBAY HI
<b>MARFORLANT</b>			
MARFORLANT	LTGEN	WILHELM C E	MCB CAMLEJ NC
DEPCDR	BGEN	BERNDT M R	MCB CAMLEJ NC
C/S	COL	DARNER W C	MCB CAMLEJ NC
MCSFBN	COL	PARRISH W H	NORFOLK VA
<b>FMFEUR DESIGNATE</b>			
FMFEUR DESIGNATE	LTGEN	WILHELM C E	MCB CAMLEJ NC
C/S-S	COL	WHITLOW J L	STUTT GART GE
<b>II MEF</b>			
II MEF	LTGEN	WILHELM C E	MCB CAMLEJ NC
DEPCDR	MAJGEN	SMITH R L	MCB CAMLEJ NC
<b>2D SRI GROUP</b>			
H&S BN	COL	LITCHFIELD D C	MCB CAMLEJ NC
2D ANIGLCO	LTCOL	TREADWAY W G	MCB CAMLEJ NC
2D RADIO BN	LTCOL	RILEY V J III	MCB CAMLEJ NC
2D INTEL CO	LTCOL	MAKUTA R S	MCB CAMLEJ NC
8TH COMM BN	LTCOL	HASTY B S	MCB CAMLEJ NC
8TH COMM BN	LTCOL	OPEL C E	MCB CAMLEJ NC
<b>22D MEU(SOC)</b>			
BLT-1/2	COL	HELLAND S T	MCB CAMLEJ NC (D)
HMM-261(REIN)	LTCOL	GREENWOOD T C	MCB CAMLEJ NC (D)
MSSG-22	LTCOL	HAIFEN T V	MCAS NEW RIVER NC (D)
MSSG-22	LTCOL	HERNDONT J L	MCB CAMLEJ NC (D)
<b>24TH MEU</b>			
BLT-3/6	COL	NATONSKI R F	MCB CAMLEJ NC
HMM-263(REIN)	LTCOL	MILLS R R	MCB CAMLEJ NC
MSSG-24	LTCOL	DUVA M	MCAS NEW RIVER NC
MSSG-24	LTCOL	TONNACOIFF B L	MCB CAMLEJ NC
<b>26TH MEU(SOC)</b>			
BLT- 1/8	COL	GARDNER E N JR	MCB CAMLEJ NC
HMM-365	LTCOL	MOORE R S	MCB CAMLEJ NC
MSSG-26	LTCOL	HARDWICK J C	MCAS NEW RIVER NC
MSSG-26	LTCOL	BELL W C	MCB CAMLEJ NC

2D MARDIV	MAJGEN	LIVINGSTON L H	MCB CAMLEJ NC
C/S	COL	SHEETS T E	MCB CAMLEJ NC
HQ BN, 2D MARDIV	COL	COMBS D L	MCB CAMLEJ NC
2D CBT ENGR BN	LTCOL	WISSLER J E	MCB CAMLEJ NC
2D TANK BN	LTCOL	THALER T F	MCB CAMLEJ NC
2D LAR BN	LTCOL	KELLEY K L	MCB CAMLEJ NC
2D ASLT AMPHIB BN	LTCOL	YOWELL T G	MCB CAMLEJ NC
<b>2D MARINES</b>	COL	SATTLER J S	MCB CAMLEJ NC
1ST BN, 2D MAR	LTCOL	GREENWOOD T C	MCB CAMLEJ NC (D)
2D BN, 2D MAR	LTCOL	PATTERSON J J	MCB CAMLEJ NC
3D BN, 2D MAR	LTCOL	LEDOUX J G	MCB CAMLEJ NC
<b>6TH MARINES</b>	COL	HARDEE J C	MCB CAMLEJ NC
1ST BN, 6TH MAR	LTCOL	SPARKS J K JR	MCB CAMLEJ NC (D)
2D BN, 6TH MAR	LTCOL	DUNFORD JR J F	MCB CAMLEJ NC
3D BN, 6TH MAR	LTCOL	MILLS R R	MCB CAMLEJ NC
<b>8TH MARINES</b>	COL	CORWIN T L	MCB CAMLEJ NC
1ST BN, 8TH MAR	LTCOL	MOORE R S	MCB CAMLEJ NC (D)
2D BN, 8TH MAR	LTCOL	DICK M E	MCB CAMLEJ NC
3D BN, 8TH MAR	LTCOL	LEFEBVRE P E	MCB CAMLEJ NC
<b>10TH MARINES</b>	COL	SACHTLEBEN J L	MCB CAMLEJ NC
1ST BN, 10TH MAR	LTCOL	PACE J A	MCB CAMLEJ NC
2D BN, 10TH MAR	LTCOL	LEHOCKEY J D	MCB CAMLEJ NC
3D BN, 10TH MAR	LTCOL	DALLAS G M	MCB CAMLEJ NC
5TH BN, 10TH MAR	LTCOL	DOZIER R D	MCB CAMLEJ NC
<b>2D MAW</b>	MAJGEN	RYAN M D	MCAS CHERRY PT NC
AWC	BGEN	BOWDOS W G III	MCAS CHERRY PT NC
C/S	COL	CROSS M J	MCAS CHERRY PT NC
MWHS-2	LTCOL	WARFLE D F	MCAS CHERRY PT NC
MWSSG-27	COL	LEHNERT M R	MCAS CHERRY PT NC
MWSS-271	LTCOL	SMITH E M	MCAS CHERRY PT NC
MWSS-272	LTCOL	SHOOK V S	MCAS NEW RIVER NC
MWSS-273	LTCOL	HUFFMAN L D	MCAS BEAUFORT SC
MWSS-274	LTCOL	DUNLAP R C	MCAS CHERRY PT NC
PSD-27	MAJ	STRAND D R	MCAS CHERRY PT NC
<b>UNIT</b>	<b>RANK</b>	<b>NAME</b>	<b>HOME LOCATION</b>
MACG-28	COL	BOROS L L	MCAS CHERRY PT NC
2D LAAD BN	LTCOL	VANDER MEER W S	MCAS CHERRY PT NC
MACS-2	LTCOL	DINGESS B D	MCAS BEAUFORT SC

MACS-6	LTCOL	HESSLER W L	MCAS CHERRY PT NC
MASS-1	LTCOL	MCFARLAND R R	MCAS CHERRY PT NC
MTACS-28	LTCOL	GIANI V C	MCAS CHERRY PT NC
MWCS-28	COL	MALTBY D R	MCAS CHERRY PT NC
<b>MAG-14</b>	COL	MANARCH G E	MCAS CHERRY PT NC
MALS-14	LTCOL	SASSER J L	MCAS CHERRY PT NC
VMA-223	LTCOL	TOMON R F	MCAS CHERRY PT NC
VMA-231	LTCOL	LEE J M	MCAS CHERRY PT NC
VMA-542	LTCOL	SAVARESE M R	MCAS CHERRY PT NC
VMAQ-1	LTCOL	SCHEINER J F	MCAS CHERRY PT NC
VMAQ-2	LTCOL	MAYER E B	MCAS CHERRY PT NC
VMAQ-3	LTCOL	WATERS S C	MCAS CHERRY PT NC
VMAQ-4	LTCOL	DOLAN M F	MCAS CHERRY PT NC
VMAT-203	LTCOL	BULAND D L	MCAS CHERRY PT NC
VMGR-252	LTCOL	BELL R H	MCAS CHERRY PT NC
VMGRT-253	LTCOL	BRONARS B E	MCAS CHERRY PT NC
VMU-2	LTCOL	HORN D E	MCAS CHERRY PT NC
<b>MAG-26</b>	COL	BYRTUS J A JR	MCAS NEW RIVER NC
MALS-26	LTCOL	EDWARDS L P	MCAS NEW RIVER NC
HMH-461	LTCOL	SUTER J R	MCAS NEW RIVER NC
HMLA-167	LTCOL	KENDRICK R M	MCAS NEW RIVER NC
HMM-264	LTCOL	CONTI E K	MCAS NEW RIVER NC
HMM-266	LTCOL	KNOLL S L	MCAS NEW RIVER NC
HMM-261	LTCOL	HANIFEN T C	MCAS NEW RIVER NC
HMT-204	LTCOL	REED J D	MCAS NEW RIVER NC
PSD-26	MAJ	ERLANDSON C E	MCAS NEW RIVER NC
<b>MAG-29</b>	COL	WALLACE R J	MCAS NEW RIVER NC
MALS-29	LTCOL	FRACASSA M	MCAS NEW RIVER NC
HMH-464	LTCOL	HOUSE D C	MCAS NEW RIVER NC
HMLA-269	LTCOL	SPENCER R W	MCAS NEW RIVER NC
HMM-162	LTCOL	VAN DYKE A E	MCAS NEW RIVER NC
HMM-263	LTCOL	DUVA M	MCAS NEW RIVER NC
HMM-365	LTCOL	HARDWICK J T	MCAS NEW RIVER NC
HMT-302	LTCOL	DUNNIVAN R H	MCAS NEW RIVER NC
<b>UNIT</b>	<b>RANK</b>	<b>NAME</b>	<b>HOME LOCATION</b>
<b>MAG-31</b>	COL	AMOS J F	MCAS BEAUFORT SC
MALS-31	LTCOL	BERGMAN I E	MCAS BEAUFORT SC
PSD-31	LTCOL	CANTRELL B E	MCAS BEAUFORT SC
VMFA-115	LTCOL	DEWITT J D	MCAS BEAUFORT SC
VMFA-122	LTCOL	DOUGHTY M J	MCAS BEAUFORT SC
VMFA-251	LTCOL	VALENTINO A W	MCAS BEAUFORT SC

VMFA-312	LTCOL	ALLES R D	MCAS BEAUFORT SC
VMFA(AW)-224	LTCOL	WHITE J A	MCAS BEAUFORT SC
VMFA(AW)-332	LTCOL	BURGESS R N	MCAS BEAUFORT SC
VMFA(AW)-533	LTCOL	PAPAY J A JR	MCAS BEAUFORT SC
<b>2D FSSG</b>			
	BGEN	MASHBURN H JR	MCB CAMLEJ NC
C/S	COL	BEAVERS J B II	MCB CAMLEJ NC
HQSVC BN	LTCOL	PHILLIPS M W	MCB CAMLEJ NC
8TH MT BN	LTCOL	OTTO S W	MCB CAMLEJ NC
2D SUPPY BN	COL	DILLARD T E JR	MCB CAMLEJ NC
8TH ENGR SPT BN	LTCOL	BARILICH S F	MCB CAMLEJ NC
2D LANDING SPT BN	LTCOL	NIELSEN T J	MCB CAMLEJ NC
2D DENTAL BN	CAPT	KVASKA G J (USN)	MCB CAMLEJ NC
2D MEDICAL BN	CAPT	HOOTEN C J (USN)	MCB CAMLEJ NC
2D MAINT BN	LTCOL	WINGARD T L	MCB CAMLEJ NC
<b>MARINE FORCES RESERVE</b>			
<b>MARFORRES</b>	MAJGEN	WILKERSON T L	NEW ORLEANS, LA
Deputy MARFORRES	BGEN	HULY J C	NEW ORLEANS, LA
C/S	COL	COHN J R	NEW ORLEANS, LA
RMAGTF CE, LANT	BGEN	KUKLOK K B	MCB CAMLEJ NC
RMAGTF CE, PAC	BGEN	MCCARTHY D M	MCB CAMPEN CA
HQBN, MARFORRES	LTCOL	GRIFFIN O JR	NEW ORLEANS, LA
3D FORECON CO	MAJ	MAUBERT P H	MOBILE, AL
4TH FORECON CO	MAJ	BUDAK A D	HONOLULU, HI
6TH COMM BN	LTCOL	NEUBAUER J J	FT SCHUYLER, NY
3D ANGLICO	LTCOL	MCCLOSKEY M P	LONG BEACH, CA
4TH ANGLICO	LTCOL	RADTKE W A	WEST PALM BEACH, CA
3D CAG	COL	MAY W F	LOS ANGELES, CA
4TH CAG	COL	RYAN F X	ANACOSTIA, MD
<b>4TH MARDIV</b>			
	BGEN	LOPEZ F R	NEW ORLEANS, LA
C/S	COL	WENZELL R M	NEW ORLEANS, LA
4TH CBT ENGR BN	LTCOL	TURPIN R B	BALTIMORE, MD
4TH RECON BN	LTCOL	ANDRUS J C	SAN ANTONIO, TX
4TH TANK BN	LTCOL	STANLEY D D	SAN DIEGO, CA
8TH TANK BN	LTCOL	PANNELL M R	ROCHESTER, NY
4TH LAI BN	MAJ	WALKER M M	MCB CAMPEN CA
4TH ASLT AMPHIB BN	LTCOL	SAPUTO J W	TAMPA, FLA
<b>23D MARINES</b>			
	COL	HERNANDEZ L G	SAN RAFAEL, CA
1ST BN, 23D MAR	LTCOL	WILLIAMS J L	HOUSTON, TX
2D BN, 23D MAR	MAJ	SMITH H N	ENCINO, CA
3D BN, 23D MAR	LTCOL	PHILLIPS J L	NEW ORLEANS, LA
<b>24TH MARINES</b>			
	COL	MYERS C O	KANSAS CITY, MO
1ST BN, 24TH MAR	LTCOL	MCELREATH D H	DETROIT MI

2D BN, 24TH MAR	LTCOL	HAGOOD D K	CHICAGO, IL
3D BN, 24TH MAR	LTCOL	GRATHWOHL B R	BRIDGETON, MO
<b>25TH MARINES</b>	COL	ALAURIA A T	WORCESTER, MA
1ST BN, 25TH MAR	LTCOL	MURPHY K T	CAMP EDWARDS MA
2D BN, 25TH MAR	LTCOL	KLINE M L	GARDEN CITY, NY
3D BN, 25TH MAR	LTCOL	WELCH D M	BROOKPARK, OH
<b>14TH MARINES</b>	COL	GIDO P	NAS DALLAS TX
1ST BN, 14TH MAR	LTCOL	KAMINSKI T J	ALAMEDA, CA
2D BN, 14TH MAR	LTCOL	WORKMAN M A	FT WORTH, TX
3D BN, 14TH MAR	LTCOL	PHILLIPS H R JR	PHILADELPHIA, PA
4TH BN, 14TH MAR	LTCOL	GILBERT J T	BESSEMER, AL
5TH BN, 14TH MAR	COL	FOULK R E	LONG BEACH, CA
<b>CG 4TH MAW</b>	BGEN	WARD J E	NEW ORLEANS, LA
C/S	COL	THAYER R F	NEW ORLEANS, LA
MWHS-4	LTCOL	PATRICK M A	NAS BELLECHASSE LA
<b>MWSG-47</b>	COL	CLEMMER W A	ANGC SELFRIDGE, MI
MWSS-471	LTCOL	ARCHER T E	NAS DALLAS TX
MWSS-472	LTCOL	GRAVES G N	NAS MARIETTA GA
MWSS-473	LTCOL	MERRILL D A	NAS MIRAMAR CA
MWSS-474	CAPT	CASEY R K	JOHNSTOWN, PA
<b>MACG-48</b>	COL	HENDERSON M M	FT SHERIDAN, IL
TAOC DET (FWD)	MAJ	MANION S P	AURORA, CO
MWCS-48	LTCOL	BAYLES W S III	FT SHERIDAN, IL
MASS-6	LTCOL	CHARBONNEAU N	NAS S WEYMOUTH MA
HQ 4TH LAAM BN	LTCOL	BEAVERS K P	MCRTC FRESNO, CA
HQ 4TH LAAD BN	MAJ	KLEINFELTER J	PASADENA, CA
<b>MAG-41</b>	COL	TYRA W D	FT WORTH, TX
MALS-41	LTCOL	RAETZ C G	FT WORTH, TX
VMFA-124	LTCOL	OEHL W F	FT WORTH, TX
VMFA-112	LTCOL	WILKINSON R J	FT WORTH, TX
VMGR-234	LTCOL	MEDVETZ M E	FT WORTH, TX
<b>MAG-42</b>	COL	ACREE C	NAS MARIETTA GA
MALS-42	LTCOL	HOSMER J C	NAS MARIETTA GA
VMFA-142	LTCOL	DOYLE M J	NAS CECIL FIELD FL
HMLA-775, DET A	LTCOL	CARLSON C H	NAS BELLE CHASSE LA
HMM-774	LTCOL	DEVERS B D	NAS NORFOLK VA
HMLA-773	LTCOL	CROLEY J M	NAS MARIETTA GA
<b>MAG-46</b>	COL	RICHARDS R W	NAS MIRAMAR CA
MALS-46	LTCOL	BERKLEY J W	NAS MIRAMAR CA

HMLA-775	LTCOL	RICHARDSON M T	NAS MIRAMAR CA
HMM-764	MAJ	HERMES R D	MCAS EL TORO CA
HMM-769	MAJ	DELANEY T M	NAS EL TORO CA
VMFA-134	LTCOL	FINCH W S	NAS MIRAMAR CA
VMFT-401	LTCOL	DEWEY H C	MCAS YUMA AZ
<b>MAG-49</b>	COL	GHORMLEY E R	NAS WILLOW GROVE, PA
VMA-131	COL	RUFO J F	NAS WILLOW GROVE, PA
HMH-772	LTCOL	MALONEY S A	NAS WILLOW GROVE, PA
VMFA-321	MAJ	MURPHY T P	ANDREW AFB, MD
VMGR-452	LTCOL	THOMASON T C	NEWBURGH, NY
<b>4TH FSSG</b>	BGEN	WILLIAMS III L V	NEW ORLEANS, LA
D/C	COL	WELLS D M	NEW ORLEANS, LA
C/S	COL	MORROW S M	NEW ORLEANS, LA
HQSVC BN	LTCOL	ICENHOUR K	NAS MARIETTA GA
4TH MAINT BN	LTCOL	TODD W F	CHARLOTTE, NC
6TH MT BN	LTCOL	CARMODY K O	RED BANK, NJ
4TH SUPPLY BN	COL	CARR L A	NEWPORT NEWS, VA
6TH ENGR SPT BN	LTCOL	CHESTON M G	PORTLAND, OR
4TH LANDING SPT BN	LTCOL	HUTCHINSON J A	SEATTLE, WA
4TH DENTAL BN	CAPT	HILL M B (USN)	NAS MARIETTA GA
4TH MEDICAL BN	CAPT	ANDRUS P (USN)	NAS MIRAMAR CA
<b>FSSG (EAST)</b>	COL	LEE G T	MCB CAMLEJ NC
<b>FSSG (WEST)</b>	COL	PIERCE J	MCB CAMPEN CA
<b>PSB (PAC)</b>	COL	JOHNSON K W	MCB CAMPEN CA
<b>PSB (LANT)</b>	COL	MCDONALD B T	MCB CAMLEJ NC
<b>CG, MCRSC</b>	BGEN	PUNARO A L	KANSAS CITY, MO
DEPCDR	COL	CREED J L	KANSAS CITY, MO
C/S	COL	BANDY C E	KANSAS CITY, MO
CSSE-41	LTCOL	DYER C	PORTLAND, OR
CSSE-42	LTCOL	COUGHLIN T M	NEWPORT NEWS, VA
CSSE-43	LTCOL	WATTERS R J	MARIETTA, GA

NOTE- THIS INFORMATION IS UPDATED AS OF 960830-INFORMATION IS PROVIDED BY MARFORLANT, MARFORPAC, MARFORRES AND III MEF.

SECRET

# SOUTHCOM COUNTERDRUG SUPPORT



R-1

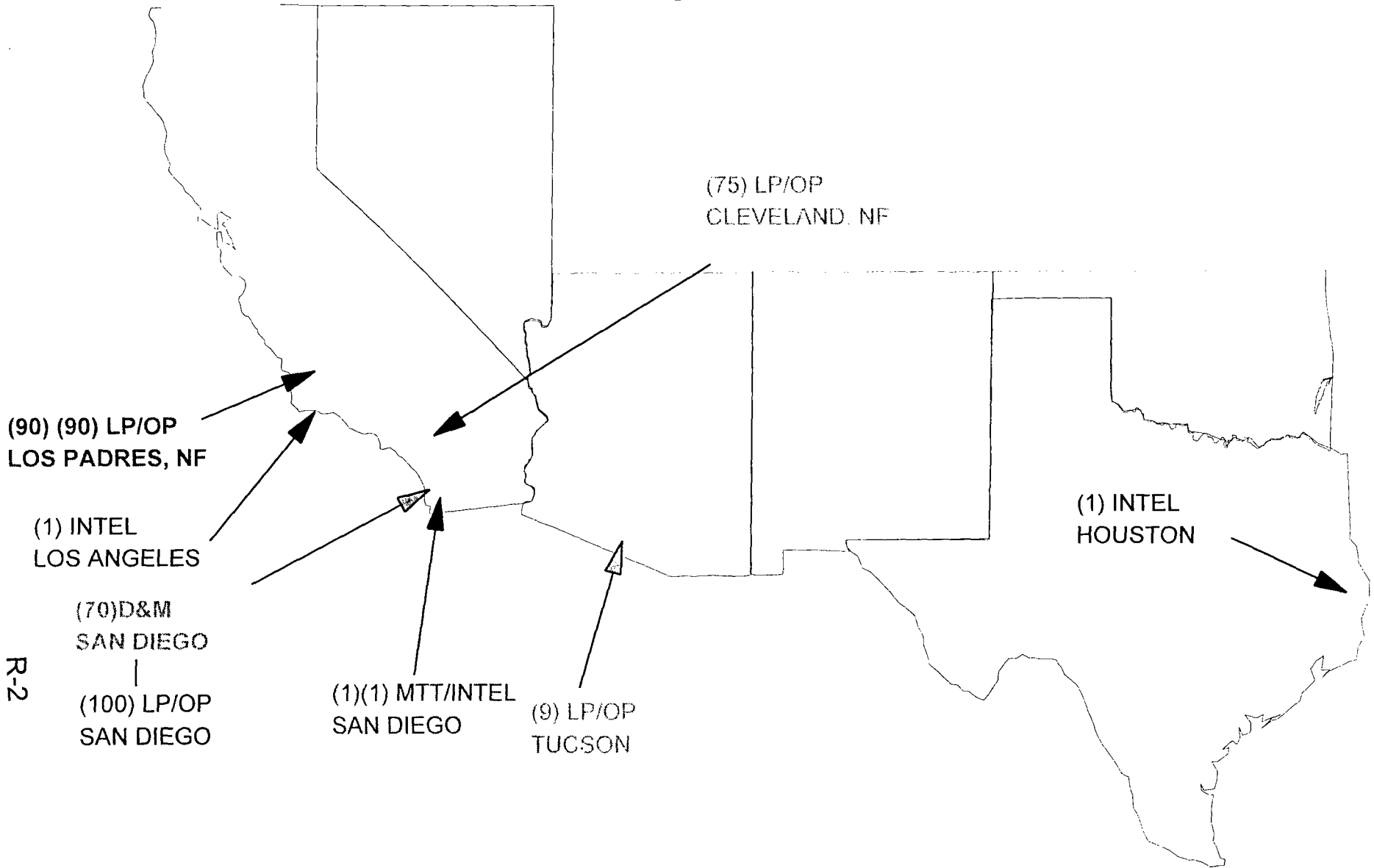
(70) LASER STRIKE  
PUCALLPA, PERU

DATE: 30 MAY 97

SECRET

DLEA SENSITIVE

# JTF- 6 COUNTERDRUG SUPPORT



R-2

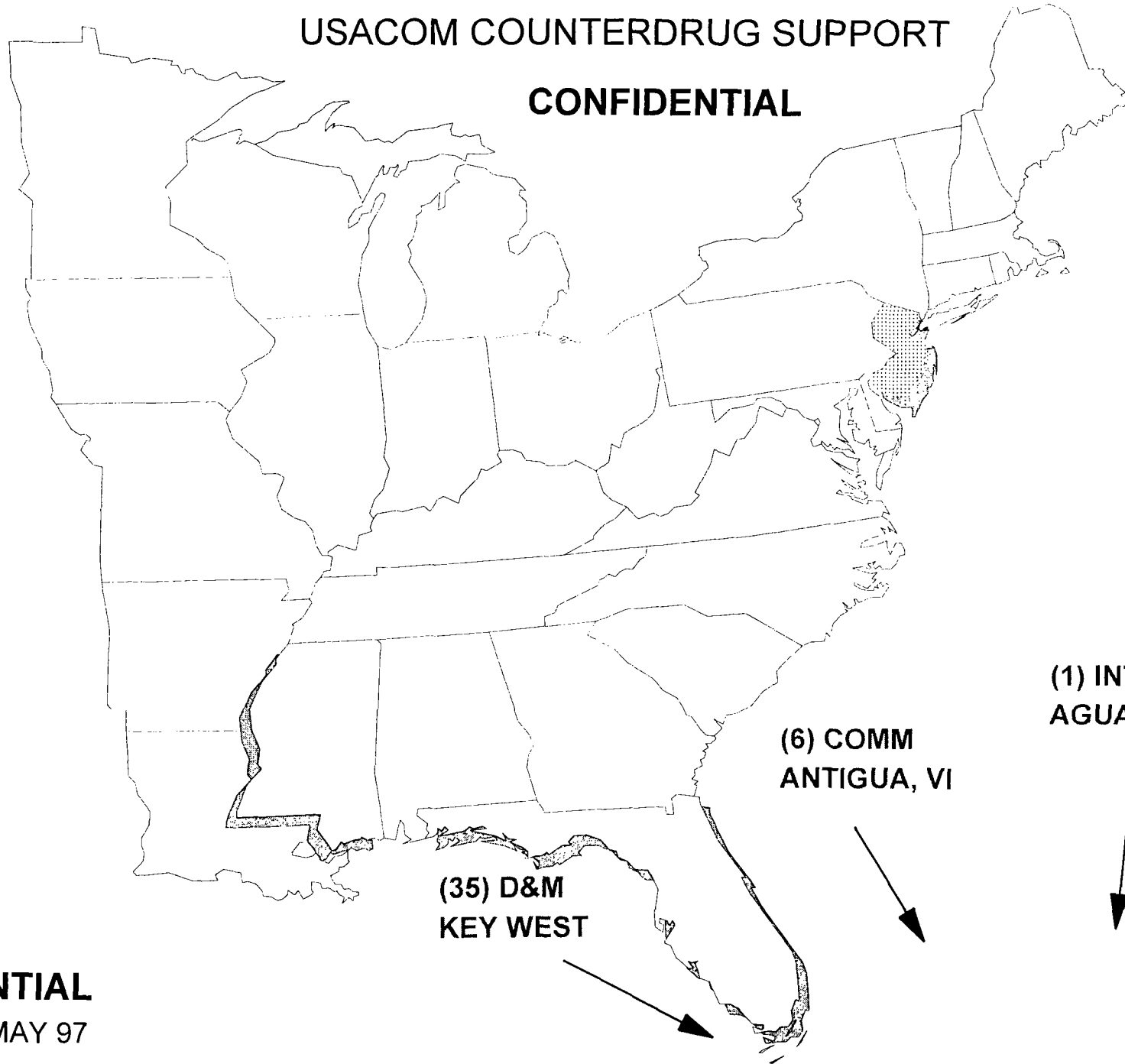
DATE: 30 MAY 97

DLEA SENSITIVE



USACOM COUNTERDRUG SUPPORT

CONFIDENTIAL



R-3

(35) D&M  
KEY WEST

(6) COMM  
ANTIGUA, VI

(1) INTEL  
AGUADILLA, PR

CONFIDENTIAL

DATE: 30 MAY 97