

UNCLASSIFIED

UNCLASSIFIED



DEPARTMENT OF THE NAVY
HEADQUARTERS UNITED STATES MARINE CORPS
WASHINGTON, D.C. 20380-0001

IN REPLY REFER TO:

3000
POC
6 Jun 94

[REDACTED] -Unclassified upon removal of enclosure (1)

From: Head, Current Operations Branch, Operations Division,
Plans, Policies and Operations Department

Subj: MONTHLY OPERATIONAL SUMMARY

Encl: (1) HQMC Operational Summary dtd 6 Jun 94 (U)

1. The Headquarters, U.S. Marine Corps Operational Summary (Enclosure (1)), is published on a monthly basis. Every attempt will be made to ensure that distribution is completed on the first working day of the month.

2. Errors or inadvertent omissions should be reported to the Commandant of the Marine Corps (Code POC-14). Questions regarding the information presented are encouraged.

3. Recommendations concerning the contents of the Operational Summary are invited. Such recommendations will be forwarded to the Commandant of the Marine Corps (Code POC-14), Headquarters, U.S. Marine Corps, Washington, D.C. 20380-0001. Inquiries/recommendations may also be submitted telephonically to the following:

Commercial: (703) 614-2151
DSN: 224-2151/1617
STU III: 224-2151/1617

A handwritten signature in black ink, appearing to read "R. S. Getz".

R. S. GETZ

Distribution: (1 ea unless noted)
HQMC, (Codes AA/C4I2(2 copies)/HD/MM/MP/OLA/RP/PL (5 copies)
CNO (N513K)
CNO (N512N)
CNO (N853)
Under SecNav, Wash, DC
OASD (SO/LIC), USMC Action Officer, The Pentagon, Wash, DC
CNO (N312), Navy Command Center, Wash, DC
Mil Asst to the Executive Secretary
COMMARFORLANT (CG/G-3), Norfolk, VA (2 copies)
COMMARFORPAC (G-3/FRO), Camp H.M. Smith, HI (2 copies)
CG I MEF (G-3), Camp Pendleton, CA
CG II MEF (G-3), Camp Lejeune, NC
CG III MEF (G-3), Camp Courtney, Okinawa

CLASSIFIED BY: MULTIPLE SOURCES
DECLASSIFY ON: OADR

UNCLASSIFIED

3000
6 Jun 94

Subj: MONTHLY OPERATIONAL SUMMARY

CG Marine Reserve Forces (G-3), New Orleans, LA
 CG 1st MarDiv (G-3), Camp Pendleton, CA
 CG 2d MarDiv (G-3), Camp Lejeune, NC
 CG 3d MarDiv (CG), Camp Courtney, Okinawa
 CG 1st MAW (G-3), Camp Foster, Okinawa
 CG 2d MAW (G-3), Cherry Point, NC
 CG 3d MAW (G-3), El Toro, CA
 CG 1st FSSG (G-1/G-3), Camp Pendleton, CA (2 copies)
 CG 2d FSSG (G-3), Camp Lejeune, NC
 CG 3d FSSG (G-3), Camp Kinser, Okinawa
 CG 1st MEB (G-3), Kaneohe Bay, HI (2 copies)
 CG MCAGCC (G-3), Twentynine Palms, CA
 CG MCLB (Code B-113), Barstow, CA
 CO 11th MEU (S-3), Camp Pendleton, CA
 CO 13th MEU (S-3), Camp Pendleton, CA
 CO 15th MEU (S-3), Camp Pendleton, CA
 CO 22d MEU (S-3), Camp Lejeune, NC
 CO 24th MEU (S-3), Camp Lejeune, NC
 CO 26th MEU (S-3), Camp Lejeune, NC
 CO 31st MEU (S-3), Camp Courtney, Okinawa, Japan
 MAWTS-1 (S-3), Yuma, AZ
 HQ MARFOREUR (Designate), Boeblingen, GE
 Chief of MarCor Sec (Code ATZA-SWL-MC), Ft. Leavenworth, KS
 MarCor Rep, The Air University, Maxwell AFB, AL
 COMSECONDFLT (FMO), Norfolk, VA
 COMTHIRDFLT (FMO), Pearl Harbor, HI
 COMSIXTHFLT (FMO), Naples, Italy
 COMSEVENTHFLT (FMO), Yokosuka, Japan
 CINUSNAVEUR (FMO) (Code N55), London, UK
 COMNAVSURFPAC (FMO), San Diego, CA
 CINCLANTFLT (FMO) (Code N00M), Norfolk, VA
 CINPACFLT (FMO) (Code 30M), Pearl Harbor, HI
 COMNAVFORKOREA (MarCor Matters)
 USCINCEUR (ECJ3-EX/ECJ3-DJ3), Vaihingen, FRG (2 copies)
 USAJFKCFMA & USAIFMA, Ft. Bragg, NC
 HQ US Forces (Codes AC/S J-5), Yongsan, Korea
 USCINCENT (CCJ3-PJ), MacDill AFB, FL
 USCINCENT (CCJ3-O, CCJ3-OG & CCJ3-ON), MacDill AFB, FL (3 copies)
 COMUSNAVCENT (FMO), Bahrain
 HQ AirMobCmd (CSM/LNM), Scott AFB, IL (2 copies)
 HQ USTRANSCOM (TJCJ5D), Scott AFB, IL
 Dep J-3, Hq, JSOC, Ft. Bragg, NC



THE FOLLOWING PAGES HAVE BEEN CHANGED:

- BRIEFING NOTES (SEE BRIEFING NOTES, PAGES A-1 THROUGH A-6)
- DEPLOYED FORCES WORLD MAP (SEE DEPLOYED FORCES, PAGE B-1)
- DEPLOYED FORCES (SEE DEPLOYED FORCES, PAGES B-2, B-4, B-5, B-7, AND B-8)
- CONTINGENCY FORCES (SEE CONTINGENCY FORCES, PAGE D-7)
- EXERCISES (SEE EXERCISES, PAGES E-1 THROUGH E-5)
- STATUS OF AMPHIBIOUS/MPSRON SHIPS (SEE STATUS OF AMPHIBIOUS/MPS SHIPS, PAGES G-1 THROUGH G-3)
- MARINE CORPS SECURITY FORCE LOCATIONS (SEE MARINE CORPS SECURITY FORCES LOCATIONS, PAGES H-1 AND H-2)
- MARINE SECURITY GUARD LOCATIONS (SEE MARINE SECURITY GUARD LOCATIONS, PAGES I-1 THROUGH I-3)

TABLE OF CONTENTS

- BRIEFING NOTES
- DEPLOYED FORCES
- PREDEPLOYMENT FORCES
- CONTINGENCY FORCES
- EXERCISES
- FORCES AT PARENT COMMANDS/UNIT DEPLOYMENT PROGRAM LOCATIONS/MEU/SPMAGTF DEPLOYMENTS
- STATUS OF AMPHIBIOUS/MPSRON SHIPS
- MARINE CORPS SECURITY FORCE LOCATIONS
- MARINE SECURITY GUARD LOCATIONS
- FMF COMMANDERS AND LOCATIONS
- CURRENT MARINE CORPS COUNTERDRUG OPERATIONS

DAILY INTERNAL HQMC DISTRIBUTION:

CMC	DIR, PO	SJA FOR CMC
DMCS	IGMC	BRANCH HEAD, POC
DC/S, M&RA	DIR, PA	SECTION HEAD, POC-10
DC/S, PP&O	ASST DC/S, PS	STAT OF FOR OFF, POC-11
DC/S, I&L	DIR, INT	STAT OF FOR NCO, POC-14
DC/S, AVN	BRANCH HEAD, INTE (2)	MCCC
DC/S, PL	COUNSEL TO CMC	

DAILY EXTERNAL HQMC DISTRIBUTION:

NAVY COMMAND CENTER (N312D)	DIR OF OPS, J-3/JOINT STAFF
NMCC, THE PENTAGON	THE PENTAGON
MARCOR AIDE TO SECNAV	MARINE REQUIREMENTS OFFICER
J-3 (JOD), THE PENTAGON	AMPH WARFARE BRANCH (N853)
CNO (N202J, MCIA)	

UNCLASSIFIED

UNCLASSIFIED

BRIEFING NOTES

6 JUN 94

INFORMATION CURRENT AS OF 030500Z JUN 94

INDIAN OCEAN

(C) 11TH MEU(SOC)/PELELIU ARG

- 11TH MEU(SOC)/PELELIU ARG ENR TO PERTH, AUSTRALIA. THEY WILL REMAIN THE PRIMARY NEO RESPONSE FORCE FOR SOMALIA UNTIL THE 26TH MEU(SOC)/GUAM ARG IS POSITIONED IN THE EASTERN MEDITERRANEAN AND CAPABLE OF RESPONDING TO NEO WITHIN 10 DAYS. (SEE DEPLOYED FORCES, PAGES B-2 AND B-5)

(C) VMGR-352 DET

- DET (4/KC-130) DEPARTED MOMBASA, KE ON 4 JUN FOR REDEPLOYMENT TO EL TORO, CA WITH INITIAL DESTINATION OF NAS SIGONELLA, ITALY. UPON ARRIVAL TO NAS SIGONELLA OPCON OF WAS TRANSFERRED TO COMMARFORPAC. (SEE DEPLOYED FORCES, PAGE B-5)

(C) 1ST PLT FAST

- FAST PLT (2/52) CONTINUES TO PROVIDE INTERNAL COMPOUND AND CONVOY SECURITY FOR USLO PERSONNEL THROUGH 30 JUN. OPCON OF FAST PLT HAS BEEN TRANSFERRED TO COMUSNAVCENT FROM THE 11TH MEU. TACON REMAINS WITH USLO MOGADISHU. (SEE DEPLOYED FORCES, PAGE B-2)

MEDITERRANEAN

(C) 24TH MEU(SOC)/INCHON ARG

- USS INCHON, USS PORTLAND, AND USS SPARTANBURG COUNTY ENR TO ROTA, SPAIN FOR PVST. USS TRENTON CONDUCTS PVST AT ROTA, SPAIN. (SEE DEPLOYED FORCES, PAGE B-4)

(U) NATO OPERATIONS

(C) VMFA(AW)-224

- VMFA(AW)-224 SUPPORTING DENY FLIGHT CAP/CAS SORTIES IN AVIANO, ITALY. (SEE DEPLOYED FORCES, PAGE B-3)

(C) PROVIDE PROMISE

- MP DET (1/32), H&S CO, 2D FSSG AND DET, ITT, 2D SRIG (0/2) CONDUCTS SECURITY OPERATIONS IN SUPPORT OF 60-BED NAVAL HOSPITAL LOCATED IN ZAGREB, CROATIA THROUGH 4 SEP. (SEE DEPLOYED FORCES, PAGE B-6)

CARIBBEAN/SOUTH AMERICA

(U) OPERATION SUPPORT DEMOCRACY

(C) MARFOR CARIB

- MARFOR CARIB/USS WASP CONDUCT AMPHIB REFRESHER TRAINING AT NB GTMO, CUBA THROUGH 11 JUN, FOLLOWED BY ADDITIONAL TRAINING IN VIEQUES, PR. (SEE DEPLOYED FORCES, PAGE B-7)

UNCLASSIFIED

UNCLASSIFIED

WARNING PAPER

BRIEFING NOTES

6 JUN 94

CARIBBEAN/SOUTH AMERICA (CONT)(C) HAITI FAST DET

- TWO FAST PERSONNEL CONTINUE TO AUGMENT SECURITY AT THE AMERICAN EMBASSY IN PORT AU PRINCE. THE ALERT POSTURE FOR A REINFORCING PLT IS 72 HOURS.

(C) SEA SIGNAL

- JTF 160, UNDER THE COMMAND OF BGEN WILLIAMS, HAS STOOD UP TO CONDUCT OPERATIONS IN SUPPORT OF DOS, DOJ, DOT, AND OTHER FEDERAL AGENCIES IN THE INTERDICTION, RECEPTION, TRANSPORTATION, DETENTION, SECURITY, CONTROL, AND PROCESSING OF HAITIAN MIGRANTS. JTF 160 FORWARD WITH SECURITY FORCE, EMBARKED ON MV GRUZIYA, ARE MOORED AT BLOUNT ISLAND, JACKSONVILLE, FL. JTF 160 FORWARD II STAFF AND SECURITY FORCE, EMBARKED ABOARD THE USNS COMFORT ARE MOORED AT NAVAL STATION MAYPORT, FL. FINAL OBJECTIVE FOR BOTH IS TO SERVE AS AFLOAT MIGRANT PROCESSING CENTERS (MPC) IN THE KINGSTON, JAMAICA AREA. THEY ARE SKED TO BEGIN MIGRANT PROCESSING NLT 13 JUN.

(U) MEDRETE

- SURG SPT CO A, 4TH MED BN CONDUCTS MEDICAL READINESS AND TRNG EX 2-94 IN HONDURAS. C&C CO D, 4TH MED BN CONDUCTS MEDICAL READINESS AND TRNG EX 3-94 IN GUATEMALA; 1 APR THROUGH 30 JUN.

(C) RIVERINE DFT

- ONE RIVERINE SPECIALIST, 2D MARDIV, SUPPORTS THE MARITIME LIAISON TM, COLOMBIA IN CONDUCTING PLANNING FOR RIVERINE OPS, 15 JAN THROUGH 15 JUL.

(C) SPOTEX III-94

- DET, 2D ANGLICO CONDUCTS LIVE NIGHT GUNFIRE TRAINING AT VIEQUES, PR, 2 THROUGH 12 JUN.

(C) KING'S GUARD

- PLT, 2/4 CONDUCTS SMALL UNIT TACTICS TRAINING IN HONDURAS THROUGH 24 JUN.

NORTH AMERICA(U) MAPLE FLAG 27

- DET, VMA 211 PARTICIPATES IN A COMBINED/JOINT USAF, USMC, AND CANADIAN AIR SUPERIORITY EXERCISE AT COLD LAKE, CANADA, 28 MAY THROUGH 25 JUN.

UNCLASSIFIED

BRIEFING NOTES

6 JUN 94

ATLANTIC

(C) 26TH MEU(SOC)/GUAM ARG
 - 26TH MEU(SOC)/GUAM ARG IS ASSIGNED ARF CONTINGENCY RESPONSIBILITIES THROUGH 10 JUN. THE MEU COMPLETES PARTICIPATION IN **BATTLE FORCE OVERLORD 94**, THE 50TH ANNIVERSARY OF THE NORMANDY LANDINGS, IN THE UK/France TODAY AND GETS UNDERWAY ENR TO CHERBOURG, FR. (SEE DEPLOYED FORCES, PAGE B-8)

(C) EXCHANGE PROGRAM
 - DET, 2D ANGLICO CONDUCTS AN EXCHANGE PROGRAM WITH U.K. IN POOLE, UK, 26 MAY THROUGH 19 JUN.

(C) JTEX
 - DET, 8TH ENGR SPT BN CONDUCTS A JOINT TRAINING EXERCISE AT GAMBIER, BAHAMAS TODAY THROUGH 1 AUG.

CONUS EAST

(C) REQUALEX-94
 - 2D TANK BN (-)(REIN) CONTINUES TANK REQUALEX TRNG AT FT KNOX, KY THROUGH TOMORROW.

(U) 22D MEU
 - 22D MEU HAS STOOD-UP AS COMPONENT OF JTF-95 AND IS CONDUCTING PREDEPLOYMENT TRNG. MAJOR SUBORDINATE ELEMENTS ARE CONDUCTING FIELD TRNG AT FORT A. P. HILL, VA, 23 MAY THROUGH 11 JUN AS PART OF THEIR PREDEPLOYMENT TRNG. (SEE PREDEPLOYMENT FORCES, PAGE C-2)

(C) MPF MAINT CYCLE
 - CE, II MEF; DET, 2D MAR DIV; DET, MAG-26; DET, 2D FSSG; DET, SRIG; AND MPSRON-1 CONDUCT TRNG ISO MPF MAINT CYCLE AT JACKSONVILLE, FL, 5 MAY THROUGH 28 JUN.

(C) PINNACLE ADVANCE - 94
 - DET, 8TH COMM BN CONDUCTS JOINT COMM EXERCISES IN SUPPORT OF MARRESFOR EXERCISE **PINNACLE ADVANCE - 94** IN NEW ORLEANS, LA; YUMA, AZ; AND 29 PALMS, CA, 8 MAY TO 15 JUL.

CONUS WEST

(U) 15TH MEU
 - 15TH MEU EMBARKS FOR DEPLOYMENT, 1 THROUGH 8 JUN.

(U) SUPPORT OF JTF-6
 - JT-234-94 - 5/11 CONDUCTS GRND RECON AT LOS PADRES NATIONAL FOREST IN SPT OF JTF-6, 30 MAY THROUGH 28 JUN.

- CP/OP TRNG - DET, 2D FORCE RECON CO CONDUCTS CP/OP TRAINING ISO JTF-6 COUNTERDRUG PROGRAM, 1 THROUGH 27 JUN.

~~TOP SECRET PAPER~~

BRIEFING NOTES

6 JUN 94

CONUS WEST (CONT)(U) SUPPORT OF JTF-6 (CONT)

- JT-082-94 - DET, ENGR SPT BN GIVES ENGINEERING SUPPORT AT SAN BERNARDINO, CA ISO JTF-6, 1 JUN THROUGH 1 AUG.

- JT-025-94 - MWSS-272 TO BUILD COUNTER-DRUG PISTOL RANGE FACILITY IN LOS ANGELES, CA ISO JTF-6, TODAY THROUGH 10 JUL.

- JT-205-94 - DET 2D SRIG TO CONDUCT SENSOR TRAINING AT SANTA MONICA, CA ISO JTF-6, TODAY THROUGH 22 JUN.

(U) RECERTIFICATION VTOL PAD

- MWSS-373 CONDUCTS RECERTIFICATION OF VERTICAL TAKEOFF AND LANDING PAD AT MCMWTC, BRIDGEPORT, CA 20 MAY THROUGH 10 JUN.

(C) TOPGUN 3-94

- DET, MAG-31 AND DET, MAG-11 CONDUCT AIR COMBAT MANEUVER TRAINING AT NAS MIRAMAR, CA THROUGH 15 JUL.

(U) FIELD AMMO SUPPLY POINT EX 2-94 (FASP 2-94)

- AMMO CO (-) (REIN) PARTICIPATES IN FASP 2-94 IN SUPPORT OF I MEF AND MCB CAMPEN AT MCB CAMPEN, CA, 28 MAY THROUGH 8 JUL.

(U) MWTC SUPPORT

- DET, 7TH ESB CONDUCTS VERTICAL, HORIZONTAL CONSTRUCTION AND UPGRADE OF TRAINING AREAS AT MCMWTC, BRIDGEPORT, CA, 3 THROUGH 30 JUN.

(C) MILITARY FREEFALL

- DET, 2D FORCE RECON CO, VALIDATES THE CAPABILITY OF THE MC5 PARACHUTE SYSTEM AT MCAS YUMA, YUMA, AZ, 5 THROUGH 27 JUN.

(U) CAX 7-94

- AGSE, MWSG-37; CSSG-1; DET, UAVCO; AND VARIOUS RESERVE UNITS PARTICIPATE IN CAX 7-94 AT MCAGCC, 29 PALMS, CA, 4 THROUGH 18 JUN.

(U) MTEX 6-94

- MWSS-371 AND VARIOUS RESERVE UNITS CONDUCT MOUNTAIN WARFARE TRNG AT MCMWTC, BRIDGEPORT, CA, 5 THROUGH 18 JUN.

(U) BANNER DET

- DET, VMFAT-101 AND HMLA-169 CONDUCTS AIR TO AIR GUNNERY AND TACTICAL MISSIONS USING NIGHT VISSION GOGGLES AT NAF EL CENTRO, CA TODAY THROUGH 17 JUN.

(U) BN ULCS EX

- DET, 9TH COMM BN CONDUCTS A UNIT LEADER COMMUNICATIONS SYSTEM EX AT CAMPEN, CA TODAY THROUGH 10 JUN.

UNCLASSIFIED

BRIEFING NOTES

6 JUN 94

MIDPAC

(C) MAGTF DEMO
 - 1ST MEB DEMONSTRATES CAPABILITIES EX, STATIC DISPLAY, FILED WPN FIRING EX, AMPHIB LANDING EX, AND CAST EX AT MCB HAWAII, 1 THROUGH 10 JUN.

(U) RIMPAC 94
 - 13TH MEU - ELEMENTS OF THE 13TH MEU, EMBARKED ON THE USS ESSEX AND THE USS OGDEN, ARE MODLOC IN THE HAWAIIAN OPERATIONS AREA TO PARTICIPATE IN RIMPAC 94 THROUGH 30 JUN. (SEE PREDEPLOYMENT FORCES, PAGE C-3)

- 1/3 AND MAG-24 - TRAIN IN EXECUTION OF AMPHIB OPS WITH MULTI-NATIONAL PARTICIPATION DURING RIMPAC 94, 3 THROUGH 16 JUN.

WESTPAC

(C) 31ST MEU
 - 31ST MEU PARTICIPATES IN TRUE TRAINING IN GUAM THROUGH 10 JUN. (SEE CONTINGENCY FORCES, PAGE D-8)

(C) AIR DEFENSE CONTROLLER TRAINING
 - DET, MACG-18 CONTINUES AIR DEFENSE CONTROLLER TRAINING AT OSAN AFB, ROK THROUGH TBD.

(U) COBRA GOLD 94
 - DET, MWSS-174 AND DET, B CO, 7TH COMM BN AUGMENT MWSG-17 AND PROVIDE COMMUNICATION SUPPORT TO JTF HQ DURING COBRA GOLD 94 IN THAILAND, 9 APR THROUGH 30 JUN.

(C) FUJI TRNG 94-4
 - 3D BN, 12TH MAR AND 4TH AAV PLT, B CO, CSG CONDUCT FIRE SPT COORDINATION AND INTEGRATION TRNG, MANEUVER TRNG, AND BILATERAL TRNG AS APPROPRIATE AT CAMP FUJI, JA, 1 MAY THROUGH 20 JUL.

(C) SQDN DEPLOYMENT
 - DET, VMFA(AW)-242 CONDUCTS A SQDN DEPLOYMENT FOR TRNG AT KADENA AFB, OKI, 8 MAY THROUGH 21 JUN, AND AT SINGAPORE, 25 MAY THROUGH 10 JUN.

(U) DIVISION SQUAD COMPETITION
 - RIFLE SQUAD FROM 2/3 REPRESENTS 3D MAR IN DIV SQUAD COMPETITION IN OKI, JA, 25 MAY THROUGH 21 JUN.

(C) SKYMASTER 94
 - 1ST STINGER BTRY PARTICIPATES IN STINGER GUNNER COMPETITION WITH ARMY UNITS IN ROK, 1 THROUGH 30 JUN.


BRIEFING NOTES

6 JUN 94

WESTPAC (CONT)(C) SODN TRAINING

- VMFA(AW)-121 CONDUCTS SQDN TRAINING AT KADENA AFB, OKI, JA AND SINGAPORE, 2 THROUGH 21 JUN.

- VMFA-122 CONDUCTS SQDN TRAINING AT KUNSAN AFB, ROK TODAY THROUGH 11 JUN.

- VMFA-235 AND VMFA(AW)-242 CONDUCTS TRAINING AT KADENA AFB, OKI, JA TODAY THROUGH 25 JUN.

(C) FORECONEX 2-94

- DET, 3D SRIG CONDUCTS FORCE RECON TRNG TO INCLUDE JUMP EX, PATROLLING, AND LIVE FIRE AT SAIPAN, TINIAN, AND GUAM, 5 THROUGH 25 JUN.

(C) TRIDENT ARCH

- DET, SPT BN TO ROTATE/EXCHANGE OKINAWA-BASE NAVY FLEET HOSPITAL IN OKI, JA TODAY THROUGH 19 JUN.

(C) EW/C

- DET, MACS-4 PROVIDES AIR GROUND INTERCEPT SUPPORT FOR ACTI TRNG IN W-173 AREA, OKI, JA TODAY THROUGH 27 JUN.

MARINE RESERVE FORCES(U) UNIT TRNG

- HQ 4TH MAW CONDUCTS UNIT TRAINING AT NAS NEW ORLEANS, LA, 1 APR THROUGH 30 JUN.

(U) SUPER SQUAD COMP

HQ CO, 24TH MAR PARTICIPATE IN SUPER SQUAD COMPETITION AT FORT HOOD, TX, 1 THROUGH 30 JUN.

UNCLASSIFIED

WORKING PAPER

DEPLOYED FORCES
(ESTIMATED LOCATIONS FOR 060600L JUN 94)

UNCLASSIFIED

PHIBRON 4
24TH MEU(SOC)
USS INCHON (LPH-12)
USS TRENTON (LPD-14)
USS PORTLAND (LSD-37)
USS SPARTANBURG CTY (LST-1192)
ENR TO ROTA, SPAIN
EDD 10 JUN
SEE PAGE B-4

OPERATION DENY FLIGHT
VMFA(AW)-224
AVIANO AB, ITALY
EDD 15 OCT
SEE PAGE B-3

OPERATION PROVIDE PROMISE
DET. MP CO. HAS BN. 2D FSSG
ZAGREB, CROATIA
EDD 4 SEP
SEE PAGE B-6

RIMPAC-94
13TH MEU
USS ESSEX (LHD-2)
USS OGDEN (LPD-5)
HAWAII OP AREA
EDD 23 JUN

PHIBRON 1
11TH MEU(SOC)
ENR TO PERTH, AUSTRALIA
EDA 16 JUN
USS PELELIU (LHA-5)
USS DULUTH (LPD-6)
USS ANCHORAGE (LSD-36)
USS FREDERICK (LST-1184)
SEE PAGE B-5

PHIBRON 2
24TH MEU(SOC)
ENR TO CHERBOURG, FR
USS GUAM (LPH-9)
USS AUSTIN (LPD-4)
USS TORTUGA (LSD-46)
USS HARLAN COUNTY (LST-1196)
EDA 7 JUN
SEE PAGE B-8

USS WASP (LHD-1)
MAFOR CARIB
GTMO BAY, CUBA
EDD 12 JUN
SEE PAGE B-7

VMGR-352
ENR TO EL TORO, CA

MOGADISHU, SOMALIA
EDD TBD
SEE PAGE B-2

UNCLASSIFIED
WORKING PAPER

UNCLASSIFIED

DEPLOYED FORCES

USCENTCOM AOR

(31 MAR 94 - TBD)

1. (C) MARINES IN SUPPORT OF USLO - SOMALIA

MARINES DEPLOYED ASHORE

MOGADISHU, SOMALIA

<u>UNIT</u>	<u>NUMBERS</u>
FAST PLT, MCSF BN	54
CISC	1
USLO MIL ADVISOR	1
TOTAL --	56

MARINES AFLOAT

<u>UNIT</u>	<u>NUMBERS</u>
11TH MEU (PELELIU ARG)	2045

TOTAL IN SUPPORT OF USCENTCOM AOR 2101

2. (C) ARMS AND EQUIPMENT
NTR

3. (C) REMARKS
11TH MEU(SOC)/PELELIU ENR TO PERTH, AUSTRALIA.

UNCLASSIFIED

DEPLOYED FORCES

OPERATION DENY FLIGHT

VMFA(AW)-224

(17 APR - 15 OCT 94)

		<u>USMC</u>		<u>USN</u>		<u>COMMANDER</u>
		<u>OFF</u>	<u>ENL</u>	<u>OFF</u>	<u>ENL</u>	
1. (C)	<u>TASK ORGANIZATION</u> VMFA(AW)-224	33	193	3	3	LTCOL D. J. KERNEN

GRAND TOTAL --- 232

2. (C) ARMS AND EQUIPMENT. N/A

3. (C) AIRCRAFT
8/F/A-18D

4. (C) LOCATION
AVIANO AIRBASE, ITALY.

5. (U) REMARKS
COMPILED FROM VMFA(AW)-224 SITREP #07 DTD 010900Z MAY 94

~~CONFIDENTIAL~~ ~~RESTRICTED~~ ~~SECRET~~ ~~TOP SECRET~~ ~~UNCLASSIFIED~~

UNCLASSIFIED

DEPLOYED FORCES24TH MEU (JTG SARATOGA)

(5 JAN - 25 JUN 94)

1. (C)	<u>TASK ORGANIZATION</u>	<u>USMC</u>		<u>USN</u>		<u>COMMANDER</u>
		<u>OFF</u>	<u>ENL</u>	<u>OFF</u>	<u>ENL</u>	
	CE, 24TH MEU	26	129	3	3	COL M.R. BERNDT
	BLT 3/6	54	1089	3	56	LTCOL D.H. YOUNG
	HMM-266(REIN)	58	274	2	3	LTCOL S. TAGG
	MSSG-24	<u>14</u>	<u>230</u>	<u>3</u>	<u>22</u>	LTCOL R.W. SEMMLER
	TOTAL	152	1722	11	84	

GRAND TOTAL --- 1,969

2. (C) ARMS AND EQUIPMENT
 2/M101A1 105MM HOW 1/AAVR-7A1
 6/M198 155MM HOW 2/LAV(AT)
 1/AAVC-7A1 8/LAV(25)
 13/AAVP-7A1 1/LAV(L)
3. (C) AIRCRAFT
 12/CH-46E 4/AH-1W
 4/CH-53E 3/UH-1N
4. (C) LOCATION
 USS INCHON, USS PORTLAND, AND USS SPARTANBURG ENR TO ROTA, SP.
 USS TRENTON MODLOC ROTA, SP.
5. (C) REMARKS
 FUTURE PLANS:
 MAINT/WASHDOWN ROTA, SPAIN, 7-10 JUN
 CONDUCT UNDERWAY TURNOVER WITH 26TH MEU(SOC), 12 JUN
 ARR MOREHEAD CITY AND CLNC, 23 JUN
 COMPILED FROM 24TH MEU SOC WEEKLY SITREP #38 DTD 281345Z MAY 94.

COMMANDER AMPHIBIOUS SQUADRON FOUR

** USS INCHON (LPH-12)
 USS TRENTON (LPD-14)
 USS PORTLAND (LSD-37)
 USS SPARTANBURG CTY (LST-1192)

~~CONFIDENTIAL~~ ~~RESTRICTED~~ ~~SECRET~~ ~~TOP SECRET~~ ~~UNCLASSIFIED~~

UNCLASSIFIED

DEPLOYED FORCES11TH MEU (PACOM)

(21 JAN 94 - 21 JUL 94)

1. (C)	<u>TASK ORGANIZATION</u>	<u>USMC</u>		<u>USN</u>		<u>COMMANDER</u>
		<u>OFF</u>	<u>ENL</u>	<u>OFF</u>	<u>ENL</u>	
	CE, 11TH MEU	24	128	0	3	COL W.C. MCMULLEN
	BLT 2/5	57	1111	3	45	LTCOL B.J. BACH
	HMM-163 (REIN)	65	358	1	4	LTCOL W.D. CATTO
	DET, VMGR-352	12	48	0	1	
	MSSG-11	13	207	4	22	LTCOL C.R. HOLLIFIELD
	TOTAL	171	1852	8	75	

GRAND TOTAL ---2,106

2. (C) ARMS AND EQUIPMENT
 4/M101A1 105MM HOW 9/LAV(25)
 6/M198 155MM HOW 2/LAV(L)
 1/AAVC-7A1 2/LAV(AT)
 13/AAVP-7A1 1/LAV(C)
 1/AAVR-7A
3. (C) AIRCRAFT (ON HAND)
 12/CH-46E 4/AH-1W
 4/CH-53E 3/UH-1N
 6/AV-8B
4. (C) LOCATION
 11TH MEU(SOC)/PELELIU ARG ENR TO PERTH, AUSTRALIA.
5. (U) REMARKS
 FUTURE PLANS:
 PVST FREMANTLE, AUSTRALIA, 16-21 JUN
 PVST PEARL HARBOR, HI, 11-13 JUL
 OFFLOAD AT CAMPEN, 20 JUL
 COMPILED FROM 11TH MEU WEEKLY SITREP 46-94 DTD 281025Z MAY 94

COMMANDER AMPHIBIOUS SQUADRON ONE

** USS PELELIU (LHA-5)
 USS DULUTH (LPD-6)
 USS ANCHORAGE (LSD-36)
 USS FREDERICK (LST-1184)

[REDACTED] WORKING PAPER

DEPLOYED FORCES

DET, MP CO (-), H&S BN, 2D FSSG

(11 MAR 94 - 4 SEP 94)

		<u>USMC</u>		<u>USN</u>		
1.	(C) <u>TASK ORGANIZATION</u>	<u>OFF</u>	<u>ENL</u>	<u>OFF</u>	<u>ENL</u>	<u>COMMANDER</u>
	MP CO (-), H&S BN	1	32	0	0	CAPT M. R. KING
	DET, ITT, 2D SRIG	<u>0</u>	<u>2</u>	<u>0</u>	<u>0</u>	
	TOTAL	1	34	0	0	

GRAND TOTAL --- 35

2. (C) ARMS AND EQUIPMENT
 2/.50 CAL MACHINE GUN 2/MK19 GRENADE LAUNCHER
 2/M1043 WHEELED VEHICLE 2/M1044 WHEELED VEHICLE

3. (C) AIRCRAFT
 NONE

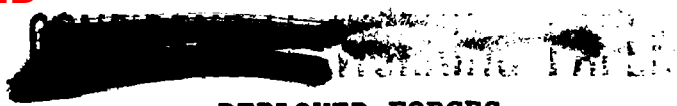
4. (C) LOCATION
 ZAGREB, CROTIA

5. (U) REMARKS
 COMPILED FROM JTF PROVIDE PROMISE WEEKLY SITREP NO. 12
 DTD 300800Z MAY 94

[REDACTED] WORKING PAPER

UNCLASSIFIED

UNCLASSIFIED



DEPLOYED FORCES

MARFOR - CARIB/JTG 120.2

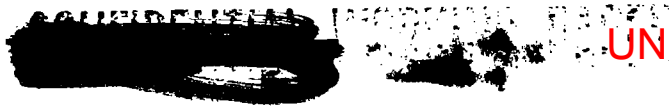
(17 OCT - TBD)

1. (C)	<u>TASK ORGANIZATION</u>	<u>USMC</u>		<u>USN</u>		<u>COMMANDER</u>
		<u>OFF</u>	<u>ENL</u>	<u>OFF</u>	<u>ENL</u>	
	CE, MARFOR-CARIB	19	71	0	0	COL GOODMAN
	CSSD	3	78	0	6	
	GCE					
	3/8	1	0	0	0	
	B/1/8	9	212	0	10	
	ACE					
	DET, HMLA-167	14	39	0	0	
	DET, HMMH-362	22	122	1	3	
	DET, HMMH-461	8	34	0	0	
	DET, MWSS-272	0	12	0	0	
	DET, MALS-26	1	35	0	0	
	TOTAL	76	603	1	19	

GRAND TOTAL --- 699

- 2. (C) ARMS AND EQUIPMENT
 4/LAV-25 4X5 TON TRUCKS
 1/LAV(C) 1/LAV(L)
 2/HMMWV (MG VARIANT)
- 3. (C) AIRCRAFT (ON HAND)
 4/AH-1W 4/CH-53E
 3/UH-1N 1/HH-46D
 8/CH-53D
- 4. (C) LOCATION
 GTMO BAY, CUBA.
- 5. (C) REMARKS
 NUMBER OF PERSONNEL ON DEPLOYMENT IS 687.
 FUTURE PLANS:
 MISSION ORIENTED TRNG VIQUES ISLAND, PR, MID JUN
 COMPILED FROM MARFOR CARIB SITREP #31 DTD 261400Z MAY 94

USS WASP



UNCLASSIFIED

DEPLOYED FORCES26TH MEU (SOC)

(21 MAY 94 - 3 NOV 94)

1. (C)	<u>TASK ORGANIZATION</u>	<u>USMC</u>		<u>USN</u>		<u>COMMANDER</u>
		<u>OFF</u>	<u>ENL</u>	<u>OFF</u>	<u>ENL</u>	
	CE, 26TH MEU	26	125	3	3	COL P.T. METZGER
	BLT 3/2	54	1052	3	56	LTCOL T.D. WALDHAUSER
	HMM-365 (REIN)	58	277	2	3	LTCOL W.G. DUNCAN JR
	MSSG-26	<u>14</u>	<u>233</u>	<u>3</u>	<u>22</u>	LTCOL D.E. WATTS
	TOTAL	152	1687	11	84	

GRAND TOTAL ---1,934

2. (C) ARMS AND EQUIPMENT

1/AAVR-7A	6/M198
13/AAVP-7A1	4/M101A1
1/AAVC-7A1	2/LAV-AT
4/LAV-25	1/LAV(L)

3. (C) AIRCRAFT

12/CH-46E	4/AH-1W
4/CH-53E	3/UH-1N

4. (C) LOCATION

26TH MEU(SOC)/USS GUAM ARG ENR TO CHERBOURG, FR.

5. (C) REMARKS

FUTURE PLANS:

INCHOP 6TH FLEET BRIEF, CHERBOURG, FR, 7 JUN
 TRANSIT TO EASTERN MEDITERRANEAN SEA, 9-17 JUN
 TURNOVER WITH 24TH MEU AT SEA, 11 JUN
 NOBLE SH8IRLEY XV, 11-22 JUL
 TUNISIAN PHIBLEX '94, 7-9 AUG
 ELEMENTS OF THE MEU INTO THE BLACK SEA, 15-18 AUG
 BETACOM, SPAIN, 5-15 SEP
 LE LUC AIRFIELD AIRSHOW(FRANCE), 24-25 SEP
 DYNAMIC GUARD '94, 28 SEP-16 OCT
 COMPILED FROM 26TH MEU WEEKLY SITREP 30-94 DTD 271400Z MAY 94

COMMANDER AMPHIBIOUS SQUADRON TWO

** USS GUAM	(LPH-9)
USS AUSTIN	(LPD-4)
USS TORTUGA	(LSD-46)
USS HARLAN COUNTY	(LST-1196)

UNCLASSIFIED

PREDEPLOYMENT FORCES

15TH MEU (CENTCOM)

(09 JUN 94 - 09 DEC 94)

1. (C) <u>TASK ORGANIZATION</u>	<u>USMC</u>		<u>USN</u>		<u>COMMANDER</u>
	<u>OFF</u>	<u>ENL</u>	<u>OFF</u>	<u>ENL</u>	
CE, 15TH MEU	25	131	0	2	COL R.R. BLACKMAN JR
BLT 1/4	60	1164	3	49	LTCOL T. M. BARRY
HMM-166(REIN)	59	283	1	3	LTCOL D.J. MCDANIEL
MSSG-15	<u>13</u>	<u>217</u>	<u>4</u>	<u>20</u>	LTCOL J.F. TRACY
TOTAL	157	1795	8	74	

GRAND TOTAL — 2,034

2. (C) ARMS AND EQUIPMENT

2/M101A1 105MM HOW	9/LAV(25)
6/M198 155MM HOW	2/LAV(L)
1/AAVC-7A1	2/LAV(AT)
13/AAVP-7A1	1/LAV(C2)
1/AAVR-7A1	
10/M220 TOW	
8/81MM MORTAR	

3. (C) AIRCRAFT (ON HAND)

12/CH-46E	4/AH-1W
4/CH-53E	3/UH-1N

4. (C) LOCATION
CAMP PENDLETON AND MCAS TUSTIN, CA.

5. (C) REMARKS
FUTURE EVENTS:
DEPART SOCAL, 9 JUN
CHOP OPCON 7TH FLEET, 24 JUN
MEU TRNG MARIANA, TINIAN/GUAM, 26-28 JUN
PORT CALL HONG KONG, 4-8 JUL
TRNG/PORT CALL SINGAPORE, 13-18 JUL
CHOP OPCON USNAVCENT, 24 JUL
EXERCISE INFINITE MOONLIGHT 94 (JORDAN), 10-16 AUG
EXERCISE INDIGO MUSKET 94-1 (SAUDI ARABIA), 18-21 AUG
EXERCISE NEON MOON 94-2 (BAHRAIN), 3-14 SEP
EXERCISE NAUTICAL MANTIS 94-2, 4-8 SEP
EXERCISE SEA SOLDIER IX (OMAN), 15-23 SEP
EXERCISE IRON MAGIC 95, 4-10 OCT
PORT CALL PERTH, 2-7 NOV
COMPILED FROM 15TH MEU WEEKLY SITREP #25-94 DTD 271600Z MAY 94
AND 15TH MEU MSG 012215Z JUN 94

COMMANDER AMPHIBIOUS SQUADRON THREE

** USS TRIPOLI	(LPH-10)
USS CLEVELAND	(LPD-7)
USS FT. MCHENRY	(LSD-43)
USS RUSHMORE	(LSD-47) (DEPARTURE DELAYED UNTIL 27 JUN)

██████████ **UNCLASSIFIED**

PREDEPLOYMENT FORCES

22D MEU

(4 APR 94 - 13 OCT 94)

1. (C)	<u>TASK ORGANIZATION</u>	<u>USMC</u>		<u>USN</u>		<u>COMMANDER</u>
		<u>OFF</u>	<u>ENL</u>	<u>OFF</u>	<u>ENL</u>	
	CE, 22D MEU (SOC)	24	131	3	2	COL J.C. HULY
	BLT 1/6	56	1136	4	57	LTCOL M.M. ROBESON
	HMM-261 (REIN)	71	371	1	2	LTCOL A.M. REYNOLDS
	MSSG-22	<u>14</u>	<u>230</u>	<u>3</u>	<u>18</u>	LTCOL R.A. HOBBS JR
	TOTAL	165	1868	11	79	

GRAND TOTAL — 2123

2. (C) ARMS AND EQUIPMENT
- | | |
|--------------------|-----------|
| 2/M101A1 105MM HOW | 4/LAV(25) |
| 6/M198 155MM HOW | 1/LAV(L) |
| 1/AAVC-7A1 | 2/LAV(AT) |
| 13/AAVP-7A1 | |
| 1/AAVR-7A1 | |
| 8/81MM MORTAR | |
3. (C) AIRCRAFT (NOTIONAL)
- | | |
|-----------|---------|
| 12/CH-46E | 4/AH-1W |
| 4/CH-53E | 3/UH-1N |
4. (C) LOCATION
- CLNC; MCAS NEW RIVER, NC; AND FORT A.P. HILL, VA.
5. (C) REMARKS
- FUTURE PLANS:
- TRUE MPC (TENTATIVE), 20-22 JUN
- MEU CPX, 27-30 JUN
- TRUE, 22 JUL- 1 AUG
- JTF PHASE I/II TRNG/MEUEX, 8-18 AUG
- BGIT, 29 AUG - 1 SEP
- BLUE/GREEN WATER WORKUPS/PHASE III TRNG/SOCEX, 6-23 SEP
- DEPLOY AS COMPONENT OF JTF 1-95, 20 OCT
- COMPILED FROM 22D MEU SITREP NO. 08 DTD 271544Z MAY 94

COMMANDER AMPHIBIOUS SQUADRON SIX

** USS NASSAU	(LHA-4)
USS PONCE	(LPD-15)
USS GUNSTON HALL	(LSD-44)

UNCLASSIFIED

[REDACTED]

PREDEPLOYMENT FORCES

13TH MEU

(25 APR 94 - 24 OCT 94)

1. (C) <u>TASK ORGANIZATION</u>	<u>USMC</u>		<u>USN</u>		<u>COMMANDER</u>
	<u>OFF</u>	<u>ENL</u>	<u>OFF</u>	<u>ENL</u>	
CE, 13TH MEU (SOC)	22	80	0	2	COL J.C. GARRETT
BLT 3/1	55	1212	3	49	LTCOL P.D. TRACEY
HMM-161 (REIN)	62	233	1	2	LTCOL W.J. NIEMASIK
MSSG-13	12	205	3	19	LTCOL D.W. HENSLEY II
TOTAL	151	1730	7	72	

GRAND TOTAL --- 1960

2. (C) ARMS AND EQUIPMENT (ON HAND)
- | | |
|------------------|-----------|
| 6/M198 155MM HOW | 2/LAV(L) |
| 1/AAVC-7A1 | 2/LAV(AT) |
| 13/AAVP-7A1 | 1/LAV(C) |
| 1/AAVR-7A1 | 9/LAV(25) |

3. (C) AIRCRAFT (ON HAND)
- | | |
|-----------|---------|
| 10/CH-46E | 0/AH-1W |
| 4/CH-53E | 0/UH-1N |

4. (C) LOCATION
HAWAIIAN OPERATIONAL AREA.

5. (C) REMARKS
FUTURE PLANS:
OQB COURSE, 6 JUN-16 JUL
ASSIGNED AS EASTPAC CONTINGENCY FORCE, 10 JUN
SACC TRNG, 11-14 JUL
TRUE TRNG, 24 JUL-13 AUG
BGCTT/ARGCTT, 1-5 AUG
FLEETEX 94-3M1, 23-31 AUG
FLEETEX 94-3M2, 14-24 SEP
COMPILED FROM 13TH MEU SITREP NO. 5-94 DTD 280950Z MAY 94

COMMANDER AMPHIBIOUS SQUADRON FIVE

- ** USS ESSEX (LHD-2)
USS OGDEN (LPD-5)
USS MOUNT VERNON (LSD-39)

[REDACTED]

UNCLASSIFIED



PREDEPLOYMENT FORCES

UNITAS XXXV

(28 MAR 94 - 30 JUN 94)

		<u>USMC</u>		<u>USN</u>		<u>COMMANDER</u>
		<u>OFF</u>	<u>ENL</u>	<u>OFF</u>	<u>ENL</u>	
1.	(C) <u>TASK ORGANIZATION</u>					
	CE, UNITAS	5	22	0	0	
	GCE	4	147	1	4	
	CSSE	1	16	0	4	
	TOTAL	10	185	1	8	

GRAND TOTAL — 204

- 2. (C) ARMS AND EQUIPMENT
12/AAVP7A1
3/60MM M224
2/MORTAR 81 MM M252

- 3. (C) LOCATION
CAMP LEJEUNE, NC

- 4. (U) REMARKS
FUTURE EVENTS:
PREDEPLOYMENT LEAVE, 17 JUN - 5 JUL
COMPILED FROM UNITAS SITREP 10 DTD 271341Z MAY 94.

USS ASHLAND (LSD-48)
USS LA MOURE COUNTY (LST-1194)



CONTINGENCY FORCESAIR CONTINGENCY FORCE (ACF) I MARINE EXPEDITIONARY FORCE

(1 NOV 93 - TBD)

1. (C) COMMAND ELEMENT COMMANDER
I MEF (FWD)
 2. (C) GROUND COMBAT ELEMENT LTCOL J. W. FOLEY
2D BN, 9TH MAR
 3. (C) AVIATION COMBAT ELEMENT
ACE 3DMAW (FWD) CE
DET, HMLA
DET, MALS
DET, MWSS
DET, MACG
DET, H&HS
DET, MATCS
DET, MWCS
DET, MASS
DET, LAAD BN
 4. (C) COMBAT SERVICE SUPPORT ELEMENT
CSSD-11
- TOTAL FOR ACF --- 600 (APPROXIMATE)
5. (C) ARMS AND EQUIPMENT TOTAL FOR ACF

4/LAV(25)	3/M224 60MM MORTAR
1/LAV(L)	2/M252 81MM MORTAR
2/LAV(C2)	2/M220 TOW
 6. (C) AIRCRAFT
4/AH-1W 2/UH-1N
 7. (C) LIFT REQUIREMENT
16 C-141'S
3 C-5'S
 8. (S) RESPONSE TIME
LEAD BN AND 1ST INCREMENT OF ACF CE (32 PAX) ON 16 HOUR ALERT.
 9. (U) REMARKS:
 - A. CG I MEF WILL DESIGNATE ACF CMDR FROM MSC BASED ON SITUATION.
 - B. INFORMATION BASED ON I MEF OPSITREP #11-94 DTD 310218Z MAY 94.

CONTINGENCY FORCES

AIR CONTINGENCY FORCE (ACF) II MARINE EXPEDITIONARY FORCE

1. (S) THE II MEF ACF IS COMPOSED OF AIR CONTINGENCY FORCE COMMAND ELEMENT (ACF CE); AN AIR CONTINGENCY FORCE BATTALION (REIN) (ACF BN); A FOLLOW-ON AIR CONTINGENCY FORCE BATTALION (REIN) (FOLLOW-ON ACF BN); AND SUPPORT FORCES, TO INCLUDE AN ARTILLERY BATTERY, DETACHMENT, 2D SRI GROUP AND A DETACHMENT, 2D FSSG. THE DEPLOYMENT OF THE ACF CE (REGT HQ) IS ENVISIONED WHEN MORE THAN A SINGLE BATTALION IS ENGAGED IN THE CONTINGENCY SITUATION. WHEN A MEB ACF CE IS DEPLOYED, THE ACF CE (REGT HQ) WILL BECOME THE GCE HEADQUARTERS WHEN TWO BATTALIONS ARE DEPLOYED.

2. (S) THE ACF BN IS IN ALERT CONDITION TWO-ALPHA AS SOON AS THEY ASSUME THE AIR CONTINGENCY MISSION. THE COMMAND ELEMENT AND FOLLOW ON FORCES ARE IN ALERT CONDITION THREE UPON ASSUMPTION OF THE CONTINGENCY MISSION.

3. (S) COMMAND ELEMENT COMMANDER
2D MAR(REIN) (1 JUN - 30 JUN) COL T.S. JONES

4. (C) GROUND COMBAT ELEMENT
1ST BN, 2D MAR(REIN) (25 MAY - 30 JUN) LTCOL D.J. HEJLIK
DET 2D SRIG

TOTAL FOR ACF — 1,121

5. (C) AVIATION COMBAT ELEMENT
DET, HMLA-269 (1 APR - 30 JUN 94)

6. (C) COMBAT SERVICE SUPPORT ELEMENT
DET, 2D FSSG

7. (C) FOLLOW-ON BATTALION TO ACF
3RD BN, 8TH MAR(REIN) (25 MAY - 30 JUN) LTCOL C.J. GUNTHER
DET, 2D SRIG
DET, 2D FSSG
2XSEC, 2D LAAD

8. (C) EQUIPMENT (TOTAL FOR ACF)
6/M198 155MM HOW
4/LAV'S

9. (C) AIRCRAFT
4/AH-1W 2/UH-1N

10. (U) RESPONSE TIMES

A. (S) ALERT CONDITION ONE: ATTAINMENT OF A READINESS POSTURE THAT WILL ENSURE DESIGNATED ELEMENTS CAN IMMEDIATELY DEPART FROM CAMP LEJEUNE, CHERRY POINT, AND/OR NEW RIVER STAGING AREA(S) TO THE DEPARTURE AIRFIELD WHEN DIRECTED.


CONTINGENCY FORCESAIR CONTINGENCY FORCE (ACF) II MARINE EXPEDITIONARY FORCE - CONTINUED

B. (S) ALERT CONDITION ONE-ALPHA: ATTAINMENT OF A READINESS POSTURE THAT WILL ENSURE DESIGNATED ELEMENTS CAN DEPART CAMP LEJEUNE, CHERRY POINT, AND/OR NEW RIVER STAGING AREA(S) TO THE DEPARTURE AIRFIELD WITHIN 30 MINUTES AFTER NOTIFICATION TO DEPLOY.

C. (S) ALERT CONDITION TWO: ATTAINMENT BY THE ACF OF A READINESS POSTURE THAT WILL ENSURE THAT DESIGNATED ELEMENTS CAN LIFT-OFF FROM THE DEPARTURE AIRFIELD WITHIN 8 HOURS AFTER INITIAL NOTIFICATION TO DEPLOY.

D. (S) ALERT CONDITION TWO-ALPHA: ATTAINMENT BY THE ACF OF A READINESS POSTURE THAT WILL ENSURE THAT DESIGNATED ELEMENTS CAN LIFT-OFF FROM THE DEPARTURE AIRFIELD WITHIN 16 HOURS AFTER INITIAL NOTIFICATION TO DEPLOY.

E. (S) ALERT CONDITION THREE: ATTAINMENT OF A READINESS POSTURE THAT WILL ENSURE THAT DESIGNATED ELEMENTS OF THE ACF-CE AND FO-ACF CAN LIFT-OFF FROM THE DEPARTURE AIRFIELD WITHIN 64 HOURS AFTER INITIAL NOTIFICATION TO DEPLOY.

11. (U) LOCATION
CAMP LEJEUNE, NC
(DEPARTURE AIRFIELD IS CHERRY POINT, NC)

12. (U) REMARKS:
COMPILED FROM CG II MEF SEMI-MONTHLY OPSITREP 11-94 DTD 272010Z MAY 94.

CONTINGENCY FORCES

ALERT MAGTF - III MARINE EXPEDITIONARY FORCE

1. (C) COMMAND ELEMENT COMMANDER
 HQ, 4TH MAR (1 JAN 93 - TBD) COL J.W. SMYTHE

2. (C) GROUND COMBAT ELEMENT LTCOL L. W. FRIEND
 3D BN 3D MAR (1 MAY 94 - 15 JUN 94)
 BTRY I, 3D BN, 10TH MAR
 DET, HQ BTRY, 3D BN, 12TH MAR
 1ST PLT, RECON CO, 4TH MAR
 HQ, CO C, 3D CBT ENGR BN
 2D PLT, CO C, 3D CBT ENGR BN
 DET, 3D SRI GROUP
 SATCOM TM, 7TH COMM BN
 MOBILE CMD TM, 7TH COMM BN
 SUBIM, ITT, INTEL CO
 SUBIM, SCAMP, INTEL CO
 SUBIM, CI, INTEL CO
 DET, TRUCK CO, HQ BN

3. (C) COMBAT SERVICE SUPPORT ELEMENT
 CSSD-39 (1 JAN 94 - TBD)

4. (C) FOLLOW-ON ECHELON TO ALERT MAGTF LTCOL J.A. KEENAN
 1ST BN, 7TH MAR (1 MAY 94 - 15 JUN 94)
 BTRY A, 1/10
 DET, HQ BTRY, 3D BN, 12TH MAR
 1ST PLT, CO C, 3D CBT ENGR BN
 2D SEC, 1ST PLT, 1ST STINGER BATTERY
 DET, 3D SRI GROUP
 DET, TRUCK CO, HQ BN

TOTAL FOR ALERT MAGTF --- 2,780 (APP)

5. (C) ARMS AND EQUIPMENT - TOTAL FOR ALERT MAGTF

16/M252 81MM MORTAR	40/MK19 40MM GRENADE
12/M198 155MM HOW	LAUNCHER
18/M224 60MM MORTAR	54/M923 TRUCK
40/M220E4 TOW	203/HMMWV
24/M2 .50 CAL MACHINE GUN	12/M1008 CUCV

6. (U) RESPONSE TIME

A. (S) LEAD RIFLE COMPANY AND BN ALPHA CMD GROUP FOR ALERT MAGTF MARSHALED AT DEPARTURE AIRFIELD WITHIN 16 HOURS AFTER NOTIFICATION.

B. (S) REMAINDER OF LEAD BATTALION AND FO-ALERT MAGTF MARSHALED AT DEPARTURE AIRFIELD WITHIN 48 HOURS AFTER NOTIFICATION.



UNCLASSIFIED

CONTINGENCY FORCES

ALERT MAGTF - III MARINE EXPEDITIONARY FORCE (CONT)

- 7. (C) LIFT REQUIREMENTS

LEAD EN	134 C-130 SORTIES
ALERT MAGTF CE (COMBINED WITH LEAD EN)	
FOLLOW-ON EN	<u>122</u> C-130 SORTIES
TOTAL FOR ALERT MAGTF	256 C-130 SORTIES

- 8. (U) REMARKS:
 COMPILED CG III MEF SEMI-MONTHLY OPSITREP #10-94 DTD 310306Z MAY 94.



[REDACTED] WORKING PAPER*

CONTINGENCY FORCES

EASTPAC CONTINGENCY AMPHIBIOUS READY FORCE

15TH MEU (CENTCOM)

1. (C) <u>TASK ORGANIZATION</u>	<u>USMC</u>		<u>USN</u>		<u>COMMANDER</u>
	<u>OFF</u>	<u>ENL</u>	<u>OFF</u>	<u>ENL</u>	
CE, 15TH MEU	25	131	0	2	COL R.R. BLACKMAN JR
BLT 1/4	60	1164	3	49	LTCOL R.M. BARRY
HMM-166 (REIN)	59	283	1	3	LTCOL D.J. MCDANIEL
MSSG-15	13	217	4	20	LTCOL J.F. TRACY
TOTAL	157	1795	8	74	

GRAND TOTAL ---2,034

2. (C) ARMS AND EQUIPMENT
 2/M101A1 105MM HOW 9/LAV(25)
 6/M198 155MM HOW 2/LAV(L)
 1/AAVC-7A1 2/LAV(AT)
 13/AAVP-7A1 1/LAV(C)
 1/AAVR-7A1 10/M220 TOW
 8/81MM MORTAR

3. (C) AIRCRAFT (ON HAND)
 12/CH-46E 4/AH-1W
 4/CH-53E 3/UH-1N

4. (C) LOCATION
 CAMP PENDLETON AND MCAS TUSTIN, CA.

5. (C) REMARKS
 FUTURE EVENTS:
 DEPARTS SOCAL 9 JUN
 CHOP OPCON 7TH FLEET, 24 JUN
 MEU TRNG MARIANA, TINIAN/GUAM, 26-28 JUN
 PORT CALL HONG KONG, 4-8 JUL
 TRNG/PORT CALL SINGAPORE, 13-18 JUL
 CHOP OPCON USNAVCENT, 24 JUL
 EXERCISE INFINITE MOONLIGHT 94 (JORDAN), 10-16 AUG
 EXERCISE INDIGO MUSKET 94-1 (SAUDI ARABIA), 18-21 AUG
 EXERCISE NEON MOON 94-2 (BAHRAIN), 3-14 SEP
 EXERCISE NAUTICAL MANTIS 94-2, 4-8 SEP
 EXERCISE SEA SOLDIER IX (OMAN), 15-23 SEP
 EXERCISE IRON MAGIC 95, 4-10 OCT
 PORT CALL PERIH, 2-7 NOV
 COMPILED FROM 15TH MEU WEEKLY SITREP 25-94 DTD 271600Z MAY 94
 AND 15TH MEU MSG 012215Z JUN

COMMANDER AMPHIBIOUS SQUADRON THREE

- ** USS TRIPOLI (LHA-10)
 USS CLEVELAND (LPD-7)
 USS FT. McHENRY (LSD-43)
 USS RUSHMORE (LSD-47) (DEPARTURE DELAYED UNTIL 27 JUN)

[REDACTED] WORKING PAPER*

CONTINGENCY FORCESATLANTIC AMPHIBIOUS READY FORCE26TH MEU (SOC)

(21 MAY 94 - 3 NOV 94)

1. (C) <u>TASK ORGANIZATION</u>	<u>USMC</u>		<u>USN</u>		<u>COMMANDER</u>
	<u>OFF</u>	<u>ENL</u>	<u>OFF</u>	<u>ENL</u>	
CE, 26TH MEU (SOC)	26	125	3	3	COL P.T. METZGER
BLT 3/2	54	1052	3	56	LTCOL T.D. WALDHAUSER
HMM-365 (REIN)	58	277	2	3	LTCOL W.G. DUNCAN JR
MSSG-25	14	233	3	22	LTCOL D.E. WATTS
TOTAL	152	1687	11	84	

GRAND TOTAL --- 1,934

2. (C) ARMS AND EQUIPMENT
- | | |
|-------------|----------|
| 1/AAVR-7A1 | 6/M198 |
| 13/AAVP-7A1 | 4/M101A1 |
| 1/AAVC-7A1 | 2/LAV-AT |
| 4/LAV-25 | 1/LAV(L) |
3. (C) AIRCRAFT
- | | |
|-----------|---------|
| 14/CH-46E | 4/AH-1W |
| 4/CH-53E | 3/UH-1N |
4. (C) LOCATION
26TH MEU(SOC)/USS GUAM ARG ENR TO CHERBOURG, FR.

5. (C) REMARKSFUTURE PLANS:

INCHOP TO 6TH FLT BRIEF, CHERBOURG, FR, 7 JUN
 TRANSIT TO EASTERN MEDITERRANEAN SEA, 9-17 JUN
 TURNOVER WITH 24TH MEU(SOC) AT SEA, 11 JUN
 NOBLE SHIRLEY XV, 11-22 JUL
 TUNISIAN PHIBLEX '94, 7-9 AUG
 ELEMENTS OF THE NEU INTO THE BLACK SEA, 15-18 AUG
 BETACOM, SPAIN, 5-15 SEP
 LE LIJC AIRFIELD AIRSHOW(FRANCE), 24-25 SEP
 DYNAMIC GUARD '94, 28 SEP-16 OCT
 COMPILED FROM 26TH MEU WEEKLY SITREP #30 DTD 271400Z MAY 94.

COMMANDER AMPHIBIOUS SQUADRON TWO

** USS GUAM	(LPH-9)
USS AUSTIN	(LPD-4)
USS TOXTUGA	(LSD-46)
USS HARLAN COUNTY	(LST-1196)

[REDACTED] WORKING PAPER

CONTINGENCY FORCES

31ST MEU

(15 NOV - TBD)

1. (C)	<u>TASK ORGANIZATION</u>	<u>USMC</u>		<u>USN</u>		<u>COMMANDER</u>
		<u>OFF</u>	<u>ENL</u>	<u>OFF</u>	<u>ENL</u>	
	CE, 31ST MEU	22	106	1	2	COL J.D. HUMBLE
	BLT 3/5	55	1072	2	44	LTCOL P. E. DONAHUE
	HMM-262 (REIN)	63	292	1	3	LTCOL B. R. FETZER
	MSSG-31	<u>12</u>	<u>228</u>	<u>5</u>	<u>19</u>	MAJ W. P. MACECEVIC JR
	TOTAL	152	1698	9	68	

GRAND TOTAL — 1,927

2. (C) ARMS AND EQUIPMENT
 4/M101A1 105MM HOW 1/LAV(L)
 6/M198 155MM HOW 2/LAV(AT)
 12/AAVP-7A1 4/LAV(25)
 1/AAVR-7A1
3. (C) AIRCRAFT
 12/CH-46E 4/AH-1W
 4/CH-53E 3/UH-1N
4. (C) LOCATION
 GUAM AND OKI, JA
5. (C) REMARKS
 FUTURE PLANS:
 MEJEX, 21-25 JUN
 COMPILED FROM 31ST MEU SITREP 14-94 DTD 302311Z MAY 94.

COMMANDER AMPHIBIOUS SQUADRON ELEVEN

** USS BELLEAU WOOD (LHA-3)
 USS DUBUQUE (LPD-8)
 USS GERMANTOWN (LSD-42)
 USS SAN BERNARDINO (LST-1189)
 ** DENOTES FLAG SHIP

~~CONFIDENTIAL~~ WORKING PAPER

EXERCISES

<u>NAME</u>	<u>DATE/LOCATION</u>	<u>UNIT</u>
<u>I MEF</u>		
RIMPAC 94	25MAY-30JUN94 HAWAII OPAREA, *SOCAL	13TH MEU(SOC) 3DEN, 1ST MAR 1STEN, 3D MAR*(2-16JUN94) HMM 265 MAG-24*(2-16JUN94) MSSG-13*
FASP EX 2-94	28MAY-8JUL94 CAMP PENDLETON, CA	AMMO CO (-) (REIN)
MAPLE FLAG 27	28MAY-10JUN94 COLD LAKE, CANADA	DET, VMA-211
CAX 7-94	4-18JUN94 TWENTYNINE PALMS, CA	AGSE MWSG-37
MOUNTAIN WARFARE TRNG 6-94	5-18JUN94 MCMWTC BRIDGEPORT, CA	MWSS-371
CAX 7/8-94	5JUN-8JUL94 TWENTYNINE PALMS, CA	CSSG-1
TACPEX 6-94	6-8JUN94 TWENTYNINE PALMS, CA	AGSE MWSG-37

FUTURE EXERCISES

TACPEX 6-94	22-24JUN94 TWENTYNINE PALMS, CA	MAG-11 MAG-13 MAG-16 MAG-39 MASS-3
MOUNTAIN WARFARE TRNG 7-94	22JUN-16JUL94 MCMWTC BRIDGEPORT, CA	DET, HMM 361
CAX 8-94	24JUN-8JUL94 TWENTYNINE PALMS, CA	AGSE MWSG-37 DET, UAVCO
AAMEX	28JUN-23JUL94 NAS PT MUGU, CA	DET, VMA-214
RED FLAG 4-94	16-27JUL94 NELLIS AFB, NV	VMA-513

~~CONFIDENTIAL~~ WORKING PAPER

EXERCISES

<u>NAME</u>	<u>DATE/LOCATION</u>	<u>UNIT</u>
MOUNTAIN WARFARE TRNG 8-94	17JUL-11AUG94 MCMWTC BRIDGEPORT, CA	DET, HMH-462 MWSS-371
INFINITE MOONLIGHT 94	30JUL-4AUG94 JORDAN	15TH MEU(SOC)
INDIGO MUSKET 94-1	7-14AUG94 SAUDI ARABIA	15TH MEU(SOC)
NEON MOON 94-2	3-14SEP94 BAHRAIN	15TH MEU(SOC)
FLEETEX 3M1-94	23-31AUG94 SOCAL	13TH MEU(SOC) SACEX DET, VMA-214
FLEETEX 3M2-94	14-23SEP94 SOCAL	13TH MEU(SOC) SOCEX
SEA SOLIDER IX	15-23SEP94 OMAN	15TH MEU(SOC)
NAUTICAL MANTIS 94-2	4-8SEP94 SAUDI ARABIA	15TH MEU(SOC)
IRON MAGIC 95	4-10OCT94 UNITED ARAB EMERITES	15TH MEU(SOC)

II MEF

REQUALEX	10APR-7JUN94 FT. KNOX, KY	2D TANK BN
PROVIDE PROMISE	15APR-15OCT94 AVIANO, IT	VMFA(AW)-224
PINNACLE ADVANCE 94	18MAY-15JUL94 NEW ORLEANS, LA	DET, 8TH COMM BN
BURMESE CHASE	26MAY-19JUN94 POOLE, ENGLAND	DET, 2D ANGLICO
TOPGUN 3-94	30MAY-15JUL94 NAS MIRAMAR, CA	DET, MAG-31
NGF SPOTEX III-94	1-12JUN94 VIEQUES, PR	DET, 2D ANGLICO
KING'S GUARD-94	1-24JUN94 HONDURAS	DET, 2D MAR, 2D MARDIV

EXERCISES

<u>NAME</u>	<u>DATE/LOCATION</u>	<u>UNIT</u>
JOT CORAL HARBOR	6JUN-1AUG94 BAHAMAS	DET, 8TH ENGR SPTBN

FUTURE EXERCISES

CAPEX	15JUN94 ROTA, SPAIN	26TH MEU(SOC)
SPANISH PHIBLEX	16-19JUN94 SIERRA DE RETIN	26TH MEU(SOC)
MPF CPX	21-23JUN94 CAMP LEJEUNE, NC	II MEF MSCS
SATEX 2-94	23-29JUN94 CAMP LEJEUNE, NC	MSCS VMFA-115 VMFA(AW)-332 VMFA(AW)-533 VMA-223 HMLA-269 DET, MACG-28
WATC-94	24JUN-10AUG94 WEST AFRICA	DET, 2D MARDIV DET, 2D AABN DET, 2D FSSG
PHIBLEX	30JUN-7JUL94 BOSTON, MA	DET, 2D FSSG
NGF SPOTEX 6-94	1-30JUL94 VIEQUES, PR	DET, RECON BN
JOINT COMM EX	10-21JUL94 CAMP LEJEUNE, NC	8TH COMM BN
FUERZAS UNIDAS 94 CENTAM	11-22JUL94 GUATEMALA	DET, 2D MAW
NOBLE SHIRLEY XV	11-22JUL94 TBD	26TH MEU(SOC)
CAPEX III-94	18-22JUL94 CAMP LEJEUNE, NC	II MEF MSC'S
FUERTE DEFENSAS 94	18-22JUL94 PANAMA	II MEF RESP CELL
RED FLAG 4/1-94	18-29JUL94 NELLIS AFB, NV	VMAQ-2 VMA-513*(16-27JUL94)

CONFIDENTIAL **TRAINING PAPER**

EXERCISES

<u>NAME</u>	<u>DATE/LOCATION</u>	<u>UNIT</u>
FUERZAS UNIDAS CHILE 94	31JUL-13AUG94 CHILE	II MEF*(2 INO) DET, 2D FORECON
TUNISIAN PHIBLEX	7-9 AUG94 TBD	26TH MEU(SOC)
AGILE SWORD-94	8-22AUG94 CAMP LEJEUNE, NC	II MEF/ALL MSCS
MEUEX	8-18AUG94 TBD	22D MEU(SOC)
BETACOM	5-15SEP94 SPAIN	26TH MEU(SOC)
DYNAMIC GUARD 94	28SEP-16OCT94 IZMIR, TURKEY	26TH MEU(SOC)

III MEF

COBRA GOLD 94	9APR-30JUN94 THAILAND	DET, 7TH COMM BN DET, MWSS-174 DET, MWSS-17
FUJI TRNG 4-94	1MAY-20JUL94 FUJI, JAPAN	3D BN, 12TH MAR 4TH PLT CO B, CSG
FORECONEX 2-94	5-25JUN94 SPAIN, TINIAN, GUAM	DET, 3D SRI GROUP

FUTURE EXERCISES

MEUEX	21-25JUN94 TBD	31ST MEU(SOC)
RECONEX 3-94	24-26JUN94 OKINAWA, JA	HQEN, 3D MARDIV RECON CO
COPE NORTH 3-94	6-15JUL94 MISAWA, KOMATSU, JA	DET, VMA-311 DET, VMGR-152 DET, MACS-4
FTX	12-22JUL94 NAS BARBERS POINT, HI	MWSS-174



EXERCISES

NAME

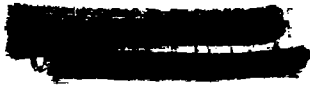
DATE/LOCATION

UNIT

MARINE RESERVE FORCES

MEDRETE 2-94	1APR-30JUN94 HONDURUS	CO A, 4TH MED BN
MEDRETE 3-94	1APR-30JUN94 GUATEMALA	CO D, 4TH MED BN
REGT FIREX	29MAY-14JUN94 FT KNOX, KY	PLT GSMTCO, 6TH MTEN DS MT CO A (-/), 6TH MTEN 4TH MAINT BN DET 1, COMM CO, H&S EN HQ BTRY 14TH MAR AMMO CO (-), 4TH SUP BN DENTAL CO A, 4TH DENT BN DET 1, AMMO CO, 4TH SUP BN MP CO A, H&S EN H&S CO, 6TH ESB ENGR SPT CO, 6TH ESB ENGR CO B, 6TH ESB BULK FUEL CO B(-), 6TH ESB BULK FUEL CO C(-), 6TH ESB HQ BTRY 2/14 HQ BTRY 4/14

FUTURE EXERCISES



EXERCISES

UNCLASSIFIED

FORCES AT PARENT COMMANDS

INFANTRY BATTALIONS

Camp Pendleton

1st Mar
1/4 (15 MEU)
3/1
1/9
1/1

5th Mar
2/9
1/5

Camp Lejeune

2d Mar
3/2 (26 MEU)
1/2

6th Mar
1/6 (22D MEU)
2/4

8th Mar
1/8
2/8 (-)
3/8

29 Palms

7th Mar
2/7
3/7
3/9 (CamPen)

Hawaii

3d Mar
1/3
2/3

FIXED-WING SQUADRONS

El Toro

MAG-11
VMFA (AW) -225
VMFA (AW) -121
VMFA-212
VMFA-232
VMFA-314
VMFA-323
VMFAT-101
VMGR-352 (-)

Yuma

MAG-13
VMA-211
VMA-214
VMA-513

Cherry Point

MAG-14
VMAQ-1
VMAQ-2
VMAQ-3
VMA-223
VMA-231
VMA-542
VMAT-203
VMGR-252
VMGR-253

Beaufort

MAG-31
VMFA-115
VMFA-312
VMFA-451
VMFA-251
VMFA (AW) -332
VMFA (AW) -533

Futerma

MAG-36
VMGR-152

HELICOPTER SQUADRONS

Hawaii

MAG-24
HMM-265
HMM-364
HMH-463

Camp Pendleton

MAG-39
HMLA-169
HMLA-267
HMLA-367
HMT-303

Tustin

MAG-16
HMM-161
HMM-164
HMM-166 (15 MEU)
HMM-361 S
HMH-363
HMH-465
HMH-466
HMT-302

Futerma

MAG-36
HMM-262 (31 MEU)

New River

MAG-26
HMM-261
HMM-264
HMT-204
HMH-362
HMH-461
HMLA-167

MAG-29
HMM-162
HMM-263
HMM-365 (26 MEU)
HMH-464

UNCLASSIFIED

UNIT DEPLOYMENT PROGRAM LOCATIONS*

HMLA-269

INFANTRY BATTALIONSCamp SchwabCamp Hansen4th Mar

2/2 (2d Mar) (Dec93 - Jun94)
 1/7 (7th Mar) (Feb94 - Aug94)

9th Mar

3/3 (3d Mar) (Jan94 - Jul94)
 3/5 (5th Mar) (May94 - Nov94)
 (31ST MEU)

FIXED-WING SQUADRONSHELICOPTER SQUADRONSIWAKUNIOKINAWAMAG-12

VMFA-122 (MAG-31) (Jan94 - Jul94)
 VMFA-235 (MAG-24) (Mar94 - Sep94)
 VMFA(AW)-242 (MAG-11) (Mar94 - Sep94)
 VMA-311 (MAG-13) (Mar94 - Sep94)
 VMAQ-4 (MAG-14) (Nov93 - May94)
 (VMAQ-1 (MAG-14) (May94 - Nov94))

MAG-36

HMM-165 (MAG-24) (Jan94 - Jul94)
 HMH-462 (MAG-16) (Nov93 - May94)
 (HMH-466 (MAG-16) (May94 - Nov94))
 HMLA-369 (MAG-39) (Nov93 - May94)
 (HMLA-367 (MAG-39) (May94 - Nov94))

DEPLOYED FOR NATO OPERATIONS

OPERATION DENY FLIGHT (AVIANO AB, IT) VMFA(AW)-224 (Apr94 - Oct94)

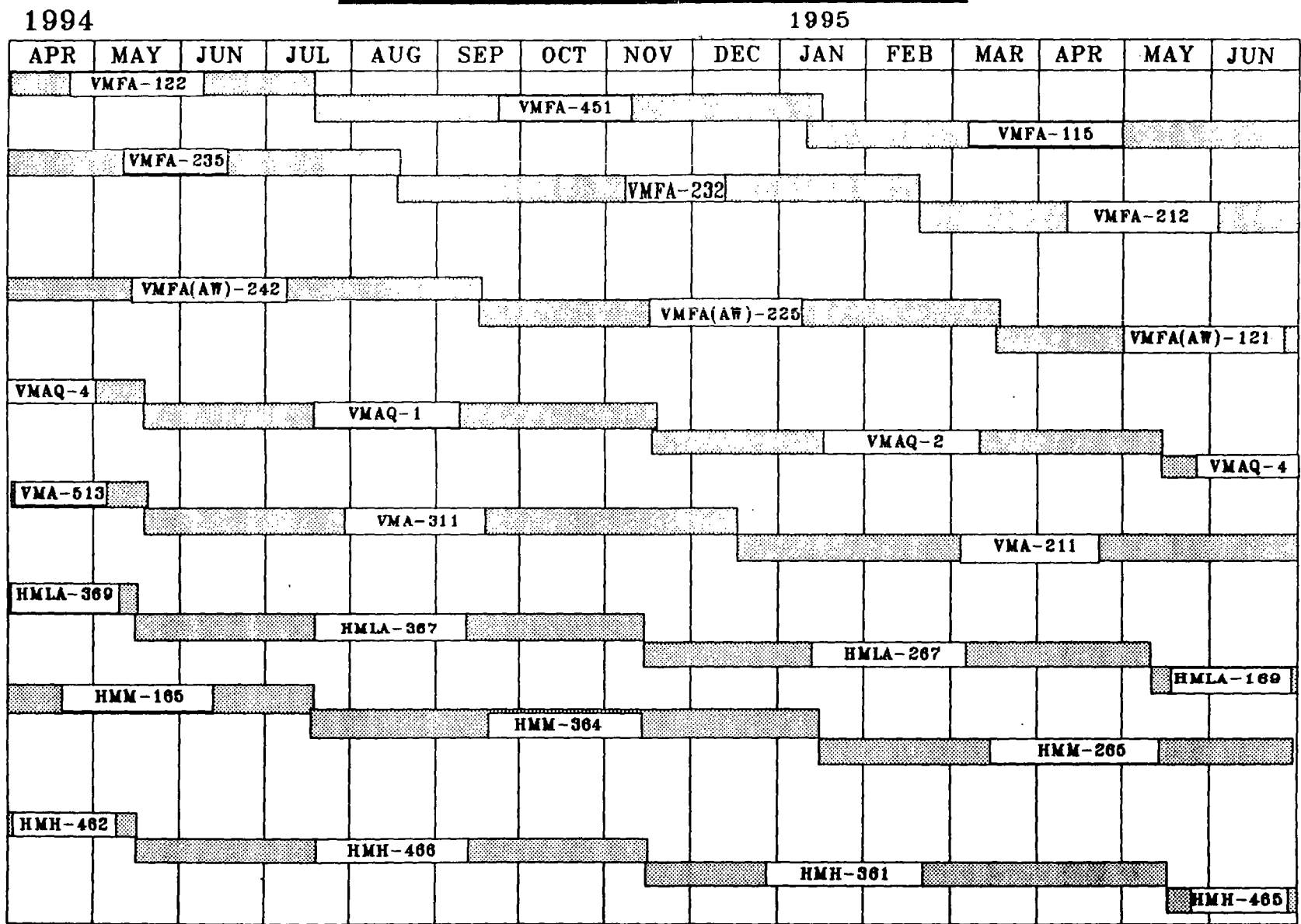
MARINE EXPEDITIONARY UNITS

24TH MEU(SOC) (Jan94 - Jun94) 11TH MEU(SOC) (Jan94 - Jul94)
 BLT 3/6 (6th Mar) BLT 2/5 (5th Mar)
 HMM-266 (MAG-26) HMM-163 (MAG-16)
 MSSG-24 MSSG-11

UNCLASSIFIED

UNCLASSIFIED

UNIT DEPLOYMENT PROGRAM

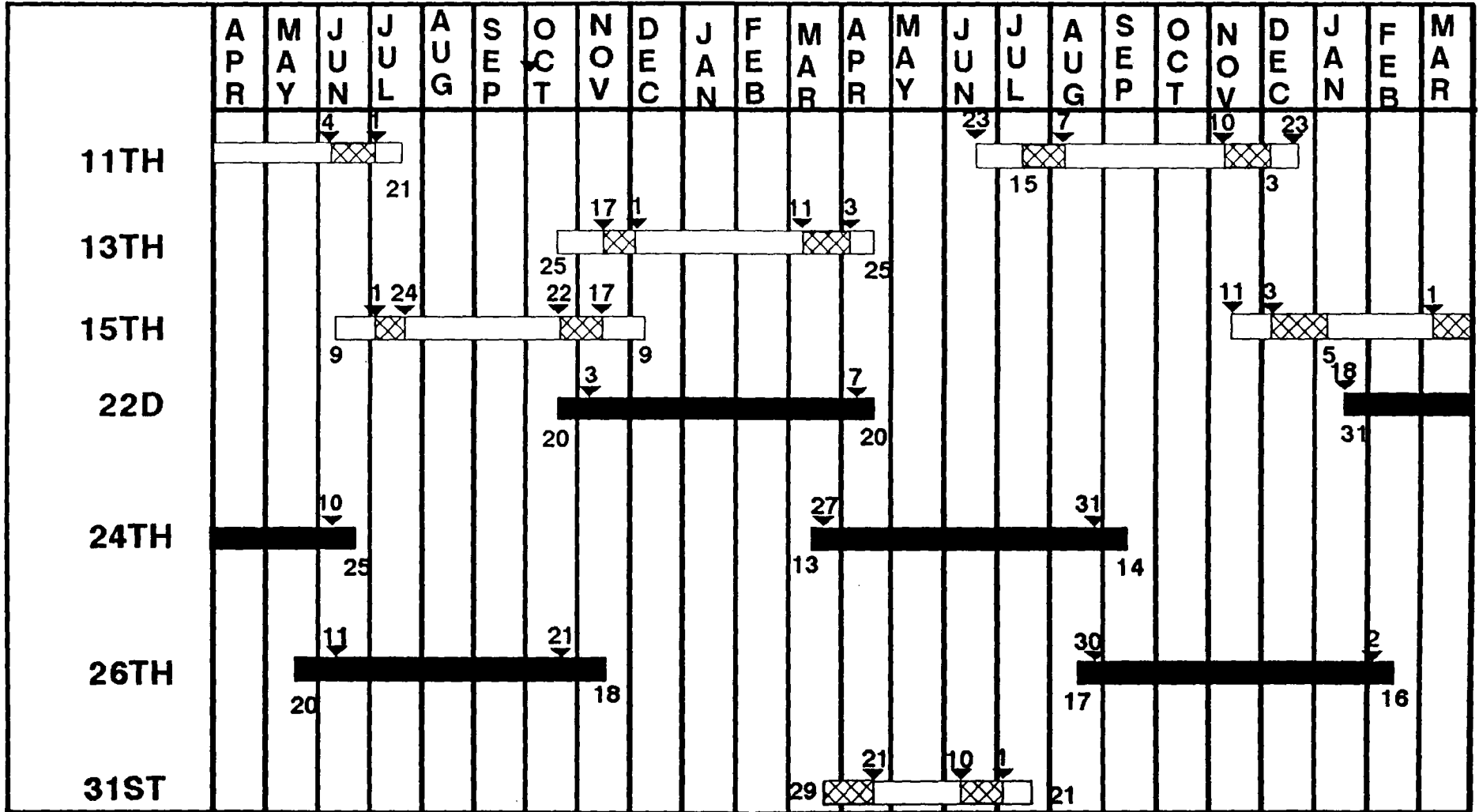


MEU DEPLOYMENTS

1994

1995

1996



EUCOM



CENTCOM



WESTPAC

▼ = TETHER/CHOP DATE

MARITIME PREPOSITIONING SHIPS/CLOSURE TIMES TO KEY LOCATIONS (AT 16 KTS SOA)
(ESTIMATED LOCATIONS FOR 060600L JUN 94)

MPSRON-1/NORFOLK, VA

MV OREGON
EDD 8 JUN

CLOSURE	
PANAMA CANAL	3.5 DAYS
NORWAY	13.2 DAYS
STR OF GIB	11.6 DAYS

MPSRON-1/ROTA, SP

MV BOBO
SS KOCAK
SS PLESS
EDDA 8 JUN
EDD 8 JUN

MPSRON-3/GUAM/SAIPAN EDD TBD

MV BUTTON
MV LOPEZ
MV LUMMUS
MV WILLIAMS

CLOSURE	
PHILIPPINES	= 4.0 DAYS
KOREA	= 4.8 DAYS
STR OF HORMUZ	= 15.5 DAYS
PANAMA CANAL	= 20.8 DAYS



MPSRON-2/DIEGO GARCIA EDD TBD

MV ANDERSON
MV BAUGH
MV BONNYMAN
MV HAUGE
MV PHILLIPS

CLOSURE	
SUEZ CANAL	= 8.5 DAYS
STR OF HORMUZ	= 4.0 DAYS
KOREA	= 13.9 DAYS

WORLDWIDE PHIB LOCATIONS - AT SEA
(PREPARED 031500L JUN 94)
(ESTIMATED LOCATIONS FOR 060600L JUN 94)

USS KEARSARGE (LHD-3)
USS GUADALCANAL (LPH-7)
USS SHREVEPORT (LPD-12)
USS ASHLAND (LSD-48)
PVST NEW YORK, NY
EDD 9 JUN

PHIBRON 2
26TH MEU(SOC)
ENR TO CHERBOURG, FR
USS GUAM (LPH-9)
USS AUSTIN (LPD-4)
USS TORTUGA (LSD-46)
USS HARLAN COUNTY (LST-1196)
EDD 7 JUN



COBRA GOLD
USS DUBUQUE
(LPD-8)
OFF LOAD IN
OKI, JA
EDD 7 JUN

PHIBRON 5
13TH MEU(SOC) ELEMENTS
HOPA
USS ESSEX (LHD-2)
USS OGDEN (LPD-5)
EDD 23 JUN

USS WASP (LHD-1)
WARFOR CARIB
GTMO BAY, CUBA
EDD 12 JUN

PHIBRON 4
24TH MEU(SOC)
USS INCHON (LPH-12)
USS TRENTON (LPD-14)
USS PORTLAND (LSD-36)
USS SPARTANBURG COUNTY (LST-1192)
ENR TO ROTA, SPAIN
EDD 10 JUN

PHIBRON 1
11TH MEU(SOC)
ENR TO PERTH, AUSTRALIA
EDA 16 JUN
USS PELELIU (LHA-5)
USS DULUTH (LPD-6)
USS ANCHORAGE (LSD-36)
USS FREDERICK (LST-1184)

WORLDWIDE PHIB LOCATIONS - IN PORT
(PREPARED 031500L JUN 94)
(ESTIMATED LOCATIONS FOR 060600L JUN 94)

LONG BEACH, CA
USS TARAWA (LHA-1)

SAN DIEGO, CA
USS TRIPOLI (LPH-10)
USS NEW ORLEANS (LPH-11)
USS CLEVELAND (LPD-7)
USS DENVER (LPD-9)
USS JUNEAU (LPD-10)
USS MOUNT VERNON (LSD-39)
USS FORT FISHER (LSD-40)
USS FORT MCHENRY (LSD-43)
USS COMSTOCK (LSD-45)
USS RUSHMORE (LSD-47)
USS CAYUGA (LST 1186)
USS BRISTOL CTY (LST-1198)
USS DURHAM (LKA-114)

LITTLE CREEK, VA
USS GUNSTON HALL (LSD-44)
USS SAGINAW (LST-1188)
USS FAIRFAX CTY (LST-1193)
USS LA MOURE CTY (LST-1194)
USS BARNSTABLE CTY (LST-1,197)

NORFOLK, VA
USS MT WHITNEY (LCC-20)
USS SAIPAN (LHA-2)
USS NASSAU (LHA-4)
USS NASHVILLE (LPD-13)
USS PONCE (LPD-15)
USS PENSACOLA (LSD-38)
USS EL PASO (LKA-117)

YOKOSUKA, JAPAN
USS BLUE RIDGE (LCC-19)

SASEBO, JAPAN
USS BELLEAU WOOD (LHA-3)
USS GERMANTOWN (LSD-42)
USS SAN BERNARDINO (LST-1189)



UNCLASSIFIED

MARINE CORPS SECURITY FORCE LOCATIONS

940602

MARINE CORPS SECURITY FORCES PACIFICMARINE BARRACKS

	OFF	ENL
<i>MB, Pearl Harbor, HI (Col W.W. North) [Redesignate to MCSFCo on 1 Aug 94]</i>	7	154
<i>MB, Yokosuka, Japan (Col C. E. Hatch)</i>	9	233
Subtotal	16	387

MARINE CORPS SECURITY FORCES ATLANTIC

	OFF	ENL
HQ, MCSFBn, Norfolk, Va (Col P. R. Ottinger)	23	155
<i>FAST Co, Atlantic, Norfolk, VA</i>	8	313
<i>MCSF Company, Bangor, WA</i>	9	348
<i>MCSF Company, Charleston, SC</i>	8	320
<i>MCSF Company, Diego Garcia</i>	4	91
<i>MCSF Company, Keflavik, Iceland</i>	2	76
<i>MCSF Company, Kings Bay, GA</i>	9	332
<i>MCSF Company, London</i>	3	77
<i>MCSF Company, Naples, IT</i>	4	148
<i>MCSF Company, Norfolk, VA</i>	3	85
<i>MCSF Company, North Island, CA</i>	4	181
<i>MCSF Company, Patuxent River, MD</i>	2	65
<i>MCSF Company, Rodman, Panama [DEACT 9512]</i>	4	118
<i>MCSF Company, Roosevelt Roads, PR</i>	4	108
<i>MCSF Company, Rota, SP</i>	2	60
<i>MCSF Company, Yorktown, VA</i>	6	218
<i>MCSF Cadres [90 Locations]</i>	12	180
SUBTOTAL	107	2871

UNCLASSIFIED

UNCLASSIFIED

MARINE CORPS SECURITY FORCE LOCATIONS

140002

MARINE DETACHMENTS Afloat

	OFF	ENL
USS SARATOGA (CV 60)	1	25
USS ENTERPRISE (CVN 65) [COH 9408]	0	0
USS AMERICA (CV 66)	1	25
USS JOHN F. KENNEDY (CV 67) (SLEP)	0	0
USS DWIGHT D. EISENHOWER (CVN 69)	1	25
USS THEODORE ROOSEVELT (CVN 71)	1	25
USS GEORGE WASHINGTON (CVN 73)	1	25
USS KITTY HAWK (CV 63)	1	25
USS INDEPENDENCE (CV 62)	1	25
USS CONSTELLATION (CV 64)	1	25
USS NIMITZ (CVN 68)	1	25
USS CARL VINSON (CVN 70)	1	25
USS ABRAHAM LINCOLN (CVN 72)	1	25
SUBTOTAL	11	275

MARINE BARRACKS

	OFF	ENL
MB Guantanamo Bay, Cuba (Col J.T. Murray)	21	323
SUBTOTAL	21	323

MCSF's ATLANTIC GRAND TOTAL	139	3469
------------------------------------	------------	-------------

MCSF's PERSONNEL TOTALS:	155	3856
---------------------------------	------------	-------------

MB, WASH DC (NOT INCLUDED IN MCSF #'s) (Col J. B. Sollis)	54	1007
--	----	------

MCSF GRAND TOTAL:	209	4863
--------------------------	------------	-------------

UNCLASSIFIED

UNCLASSIFIED

MARINE SECURITY GUARD LOCATIONS

940602

OFF ENL

Headquarters Co. (Quantico)

11 87

SUBTOTAL

11 87

OFF ENL

OFF ENL

*Company A (Frankfurt)*3 4 *Istanbul* 8*Ankara* 8 *Kiev* 6*Athens* 10 *Moscow* 23*Belgrade* 7 *Munich* 6*Berlin* 6 *Prague* 8*Bonn* 18 *St. Petersburg* 6*Bucharest* 7 *Sofia* 6*Budapest* 10 *Vienna* 23*Frankfurt* 9 *Warsaw* 10*Helsinki* 10 *Zagreb* 5

SUBTOTAL

3 190

OFF ENL

OFF ENL

*Company B (Nicosia)*3 4 *Karachi* 9*Abu Dhabi* 6 *Kuwait* 6*Algiers* 4 *Manama* 7*Amman* 8 *Muscat* 6*Cairo* 27 *Nicosia* 8*Damascus* 7 *Rabat* 8*Dhahran* 6 *Riyadh* 10*Islamabad* 7 *Sanaa* 7*Jerusalem* 6 *Tel Aviv* 10*Jeddah* 6 *Tunis* 5

SUBTOTAL

3 157

UNCLASSIFIED

PAGE I-1

MARINE SECURITY GUARD LOCATIONS

UNCLASSIFIED

MARINE SECURITY GUARD LOCATIONS

940802

	OFF	ENL		OFF	ENL
<i>Company C (Bangkok)</i>	3	4			
<i>Bangkok</i>		10	<i>Manila</i>		10
<i>Beijing</i>		13	<i>New Delhi</i>		11
<i>Canberra</i>		6	<i>Rangoon</i>		6
<i>Colombo</i>		8	<i>Seoul</i>		10
<i>Dhaka</i>		6	<i>Shanghai</i>		6
<i>Hong Kong</i>		6	<i>Singapore</i>		6
<i>Jakarta</i>		10	<i>Tokyo</i>		16
<i>Kathmandu</i>		6	<i>Wellington</i>		6
<i>Kuala Lumpur</i>		6			
SUBTOTAL				3	146

	OFF	ENL		OFF	ENL
<i>Company D (Ft Lauderdale)</i>	4	4			
<i>Asuncion</i>		6	<i>Montevideo</i>		6
<i>Bogota</i>		9	<i>Nassau</i>		6
<i>Brazilia</i>		8	<i>Panama City</i>		8
<i>Bridgetown</i>		6	<i>Paramaribo</i>		6
<i>Buenos Aries</i>		7	<i>Port Au Prince</i>		8
<i>Caracas</i>		6	<i>Port of Spain</i>		6
<i>Georgetown</i>		6	<i>Quito</i>		7
<i>Guatemala</i>		9	<i>Rio de Janeiro</i>		9
<i>Havana</i>		10	<i>San Jose</i>		7
<i>Kingston</i>		8	<i>San Salvador</i>		14
<i>La Paz</i>		7	<i>Santiago</i>		9
<i>Lima</i>		9	<i>Santo Domingo</i>		7
<i>Managua</i>		9	<i>Sao Paulo</i>		7
<i>Mexico City</i>		13	<i>Tegucigalpa</i>		11
SUBTOTAL				4	228

UNCLASSIFIED

UNCLASSIFIED

MARINE SECURITY GUARD LOCATIONS

940602

	OFF	ENL		OFF	ENL
<i>Company E (Frankfurt)</i>	3	4			
<i>Bern</i>		6	<i>Oslo</i>		5
<i>Brussels</i>		23	<i>Ottawa</i>		6
<i>Copenhagen</i>		6	<i>Paris</i>		29
<i>Dublin</i>		6	<i>Reykjavik</i>		6
<i>Geneva</i>		14	<i>Rome</i>		17
<i>Lisbon</i>		8	<i>Stockholm</i>		6
<i>London</i>		19	<i>The Hague</i>		10
<i>Luxembourg</i>		6	<i>Valletta</i>		6
<i>Madrid</i>		10	<i>Vatican</i>		5
SUBTOTAL				3	192

	OFF	ENL		OFF	ENL
<i>Company F (Nairobi)</i>	3	4			
<i>Addis Ababa</i>		6	<i>Kampala</i>		6
<i>Antananarivo</i>		6	<i>Khartoum</i>		6
<i>Brazzaville</i>		6	<i>Kinshasa</i>		6
<i>Bujumbura</i>		6	<i>Lusaka</i>		6
<i>Cape Town</i>		6	<i>Maputo</i>		6
<i>Dar es Salaam</i>		6	<i>Mogadishu</i>		0
<i>Djibouti</i>		6	<i>Nairobi</i>		6
<i>Gaborone</i>		4	<i>Port Louis</i>		6
<i>Harare</i>		6	<i>Pretoria</i>		9
SUBTOTAL				3	107

	OFF	ENL		OFF	ENL
<i>Company G (Abidjan)</i>	3	3			
<i>Abidjan</i>		6	<i>Libreville</i>		6
<i>Accra</i>		6	<i>Lome</i>		6
<i>Bamako</i>		6	<i>Monrovia</i>		7
<i>Bangui</i>		6	<i>N'Djamena</i>		6
<i>Conakry</i>		6	<i>Niamey</i>		6
<i>Dakar</i>		7	<i>Nouakchott</i>		6
<i>Freetown</i>		6	<i>Ouagadougou</i>		6
<i>Lagos</i>		11	<i>Yaounde</i>		6
SUBTOTAL				3	106
MSG PROGRAM TOTAL				33	1213

UNCLASSIFIED

PAGE 1-3

MARINE SECURITY GUARD LOCATIONS

UNCLASSIFIED

FMF COMMANDERS AND LOCATIONS

<u>UNIT</u>	<u>GRADE</u>	<u>NAME</u>	<u>HOME LOCATION</u>
<u>FMFPAC</u>			
<u>MARFORPAC</u>	LITGEN	STACKPOLE H C III	CAMSMH HI
	BGEN	KUHN C D JR	CAMSMH HI
	COL	WOOD A A	CAMSMH HI
HQSVC BN	COL	WILSON L W	CAMSMH HI
1ST RADIO BN	LTCOL	MONREAL R	MCAS KBAY HI
<u>I MEF</u>			
<u>I MEF</u>	LITGEN	CHRISTMAS G R	MCB CAMPEN CA
	BGEN	DELONG M P	MCB CAMPEN CA
	COL	MOFFEIT J W	MCB CAMPEN CA
<u>1ST SRI GROUP</u>	COL	HINES T J	MCB CAMPEN CA
1ST ANGLICO(-)	LTCOL	ESTILLO W R A	MCB CAMPEN CA
1ST INTEL CO	LTCOL	HEITZ D W	MCB CAMPEN CA
1ST RPV CO	MAJ	CALLAWAY J E	MCAGCC 29PALMS CA
1ST FORECON CO	MAJ	WESTMEYER R L	MCB CAMPEN CA
9TH COMM BN	LTCOL	HELGESON M S	MCB CAMPEN CA
1ST UAV CO	MAJ	CALLAWAY J E	MCAGCC 29PALMS CA
HQSVC CO	MAJ	LASTER A J	MCB CAMPEN CA
DET A		OPEN	MCAGCC 29PALMS CA
<u>11TH MEU</u>	COL	MCMULLEN W C III	CAMPEN CA
BLT 2/5	LTCOL	BACH B J	CAMPEN CA
HMM-163(REIN)	LTCOL	CATTO W D	CAMPEN CA
MSSG-11	LTCOL	NIXON R M	CAMPEN CA
<u>13TH MEU(SOC)</u>	COL	GARRETT J C	CAMPEN CA
BLT 1/9	LTCOL	SILVA L S	CAMPEN CA
HMM-268(REIN)	LTCOL	WILCUTT G K	CAMPEN CA
MSSG-13	LTCOL	HENSLEY D W II	CAMPEN CA
<u>15TH MEU</u>	COL	BLACKMAN R R JR	CAMPEN CA
BLT 1/4	LTCOL	BARRY R M	CAMPEN CA
HMM-166(REIN)	LTCOL	MCDANIAL D J	TUSTIN CA
MSSG-15	LTCOL	TRACY J F	CAMPEN CA
<u>1ST MARDIV</u>	MAJGEN	WILHELM C E	MCB CAMPEN CA
	COL	GRESSLY D A	MCB CAMPEN CA
	COL	BAKER W L	MCB CAMPEN CA
HQ BN, 1ST MARDIV	COL	DOTTO P A	MCB CAMPEN CA
1ST CBT ENGR BN	LTCOL	ELLIS R W	MCB CAMPEN CA
1ST TANK BN	LTCOL	ONEAL M C	MCAGCC 29PALMS CA
1ST RECON/LAI BN	LTCOL	MAULDIN D W	MCB CAMPEN CA
3D LAI BN(-)	LTCOL	TAYLOR J M	MCAGCC 29PALMS CA
3D ASLT PHIB BN	LTCOL	SCHICK H P	MCB CAMPEN CA

NOTE - THIS INFORMATION IS UPDATED AS OF 940601 BY MULTIPLE SOURCES, I.E., SITREPS, PHONE CALLS, ETC.

UNCLASSIFIED

FMF COMMANDERS AND LOCATIONS

<u>UNIT</u>	<u>GRADE</u>	<u>NAME</u>	<u>HOME LOCATION</u>
<u>1ST MARINES</u>	COL	COLE R	MCB CAMPEN CA
1ST BN, 1ST MAR	LTCOL	ZILMER R C	MCB CAMPEN CA
3D BN, 1ST MAR	LTCOL	TRACEY P D	MCB CAMPEN CA
<u>5TH MARINES</u>	COL	SCHEFERMAN J E	MCB CAMPEN CA
3D BN, 5TH MAR	LTCOL	DONAHUE P E	MCB CAMPEN CA
2D BN, 9TH MAR	LTCOL	FOLEY J W	MCB CAMPEN CA
1ST BN, 5TH MAR	LTCOL	BONWIT D F	MCB CAMPEN CA
<u>7TH MARINES</u>	COL	GREGSON W C	MCAGOC 29PALMS CA
1ST BN, 7TH MAR	LTCOL	KEENAN J A	MCAGOC 29PALMS CA
2D BN, 7TH MAR	LTCOL	BISZAK B S	MCAGOC 29PALMS CA
3D BN, 9TH MAR	LTCOL	CUNNINGHAM G K	MCB CAMPEN CA
<u>11TH MARINES</u>	COL	MCABEE J C	MCB CAMPEN CA
1ST BN, 11TH MAR	LTCOL	CRUDDER P C	MCB CAMPEN CA
2D BN, 11TH MAR	LTCOL	BAIRD S W	MCB CAMPEN CA
3D BN, 11TH MAR	LTCOL	LESNOWICZ E J JR	MCAGOC 29PALMS CA
5TH BN, 11TH MAR	LTCOL	LINDSEY F R	MCB CAMPEN CA
<u>3D MAW</u>	MAJGEN	FRATARANGELO P A	MCAS EL TORO CA
	COL	BEAUFAIT D A	MCAS EL TORO CA
	COL	SEDER T D	MCAS EL TORO CA
	LTCOL	STEVENS M L	MCAS EL TORO CA
MWHS-3			
	AWC		
	C/S		
<u>MWSG-37</u>	COL	STANLEY W A	MCAS EL TORO CA
AGSE-173	LTCOL	METTLER T D	MCAGOC 29PALMS CA
MWSS-371	LTCOL	MEIER W A	MCAS YUMA AZ
MWSS-372	LTCOL	JENKINS R L	MCAS CAMPEN CA
MWSS-373	LTCOL	COTTINGTON S C JR	MCAS CAMPEN CA
MWSS-374	LTCOL	OLSON D P	MCAS TUSTIN CA
<u>MACG-38</u>	COL	GARVIN J R	MCAS EL TORO CA
MACS-1	LTCOL	REARDON J D	MCAS CAMPEN CA
MACS-7	LTCOL	NEHER R O	MCAS YUMA AZ
MATCS-38	LTCOL	DOMARASKY III A M	MCAS TUSTIN CA
MTACS-38	MAJ	SUMMERS J A	MCAS EL TORO CA
MWCS-38	LTCOL	ZELCHAK E J JR	MCAS EL TORO CA
MASS-3	LTCOL	LEWIS G W	MCAS CAMPEN CA
2D LAAM BN	LTCOL	RICHARDSON D A	MCAS YUMA AZ
3D LAAD BN	LTCOL	DEMPSEY T L	MCAS CAMPEN CA
<u>MAG-11</u>	COL	TULLOS G C	MCAS EL TORO CA
MALS-11	LTCOL	ADAMTEC R	MCAS EL TORO CA
VMFA-232	LTCOL	GOOLD D F	MCAS EL TORO CA
VMFA-314	LTCOL	RATHS G G	MCAS EL TORO CA
VMFA-323	LTCOL	FLOCK J F	MCAS EL TORO CA
VMFA(AW)-121	LTCOL	BORJE D J	MCAS EL TORO CA

NOTE - THIS INFORMATION IS UPDATED AS OF 940601 BY MULTIPLE SOURCES, I.E., SITREPS, PHONE CALLS, ETC.

UNCLASSIFIED

UNCLASSIFIED

FMF COMMANDERS AND LOCATIONS

<u>UNIT</u>	<u>GRADE</u>	<u>NAME</u>	<u>HOME LOCATION</u>
<u>MAG-11 (CONT)</u>			
VMFA(AW)-225	LTCOL	HULICK J M	MCAS EL TORO CA
VMFA(A)-242	LTCOL	BARNHART M S	MCAS EL TORO CA
VMGR-352	LTCOL	BRADY J M	MCAS EL TORO CA
VMFAT-101	LTCOL	RICHARDS R D	MCAS EL TORO CA
VMFA-212	LTCOL	BOLE P S	MCAS EL TORO CA
<u>MAG-13</u>			
MALS-13	COL	BIOTY J R	MCAS YUMA AZ
VMA-211	LTCOL	HUGHES C L JR	MCAS YUMA AZ
VMA-214	LTCOL	WILLIAMS K G	MCAS YUMA AZ
VMA-311	LTCOL	COBLE H J	MCAS YUMA AZ
VMFA-513	LTCOL	BULAND D L	MCAS YUMA AZ
	LTCOL	BAIN W F	MCAS YUMA AZ
<u>MAG-16</u>			
MALS-16	COL	PARKER JR R E	MCAS TUSTIN CA
HMM-161	LTCOL	ROBISON B J	MCAS TUSTIN CA
HMM-164	LTCOL	NIEMASIK W J	MCAS TUSTIN CA
HMH-166	LTCOL	ALBRECHT B A	MCAS TUSTIN CA
HMH-361	LTCOL	MCDANIEL D J	MCAS TUSTIN CA
HMH-363	LTCOL	ASHTON D F	MCAS TUSTIN CA
HMH-462	LTCOL	SHELTON R S	MCAS TUSTIN CA
HMH-465	LTCOL	DONOVAN RH	MCAS TUSTIN CA
HMH-466	LTCOL	MCCOMB F M	MCAS TUSTIN CA
HMT-302	LTCOL	BERUBE R A	MCAS TUSTIN CA
	LTCOL	YANELLO G L	MCAS TUSTIN CA
<u>MAG-39</u>			
MALS-39	COL	TRUMPE D F	MCB CAMPEN CA
HMLA-267	LTCOL	JOHNSON T V	MCB CAMPEN CA
HMLA-169	LTCOL	HUTCHERSON P R	MCB CAMPEN CA
HMLA-367	LTCOL	LEUKING R W	MCB CAMPEN CA
HMT-303	LTCOL	JENSEN C B	MCB CAMPEN CA
HMLA-369	LTCOL	GILMAN C R	MCB CAMPEN CA
	LTCOL	JINNETT M J	MCB CAMPEN CA
<u>1ST FSSG</u>			
	BGEN	HIGGINBOTHAM G B	MCB CAMPEN CA
HQSVC BN(-)	COL	TOWN D A	MCB CAMPEN CA
1ST MAINT BN(-)	LTCOL	CROOM D G	MCB CAMPEN CA
7TH MT BN(-)	LTCOL	YFF P N	MCB CAMPEN CA
1ST SUPPLY BN(-)	LTCOL	VALENTIN J	MCB CAMPEN CA
7TH ENGR SPT BN(-)	COL	KELLY R L	MCB CAMPEN CA
1ST LANDING SPT BN	LTCOL	SWEENEY JR J L	MCB CAMPEN CA
1ST DENTAL BN	LTCOL	LYKSTRA D M	MCB CAMPEN CA
1ST MEDICAL BN	CAPT	RATHBUN W A(USN)	MCB CAMPEN CA
CSSG-1	CDR	FLETCHER R J JR(USN)	MCB CAMPEN CA
CSS DET-14	COL	MASHBURN H JR	MCAGCC 29PALMS CA
CSS DET-16	MAJ	JOHNSON R G	MCAS EL TORO CA
1ST FSSG (FWD)	MAJ	KLEUGEL D M	MCAS YUMA AZ
	COL	DICK B E	MCB CAMPEN CA

NOTE - THIS INFORMATION IS UPDATED AS OF 940601 BY MULTIPLE SOURCES, I.E., SITREPS, PHONE CALLS, ETC.

UNCLASSIFIED

UNCLASSIFIED

FMF COMMANDERS AND LOCATIONS

<u>UNIT</u>	<u>GRADE</u>	<u>NAME</u>	<u>HOME LOCATION</u>
<u>III MEF</u>			
<u>III MEF</u>		MAJGEN GARDNER D R	CAMP COURTNEY
DEP CDR	BGEN	BICE D F	CAMP COURTNEY
C/S	COL	BRENNAN J L	CAMP COURTNEY
<u>31ST MEU</u>	COL	HUMBLE J D	CAMP COURTNEY
HMM-262	LTCOL	FETZER B R	MCAS FUTENMA
3D BN, 5TH MAR	LTCOL	DONAHUE P E	CAMP HANSEN
MSSG-31	MAJ	MACECEVIC W P JR	CAMP KINSER
<u>3D SRI GRP</u>	LTCOL	FINSTERLE S J	CAMP HANSEN
7TH COMM BN	LTCOL	PETRONZIO N C	CAMP HANSEN
3D INTEL CO	MAJ	DETTZ D D	CAMP HANSEN
<u>3D MARDIV</u>	BGEN	BICE D F	CAMP COURTNEY
	COL	KELLY P V	CAMP COURTNEY
HQ BN, 3D MARDIV	COL	MACKIE M E SR	CAMP COURTNEY
3D CBT ENGR BN	LTCOL	TIBERG R	CAMP HANSEN
COMBAT SUPPORT GROUP	LTCOL	GILLETTE NC III	CAMP SCHWAB
<u>4TH MARINES</u>	COL	COHEN R S	CAMP HANSEN
2D BN, 2D MAR	LTCOL	GARRETT W B	CAMP SCHWAB
3D BN, 9TH MAR	LTCOL	CUNNINGHAM G K	CAMP SCHWAB
3D BN, 3D MAR	LTCOL	FREUND L W	CAMP HANSEN
<u>12TH MARINES</u>	COL	FORD W G	CAMP FOSTER
2D BN, 12TH MAR	LTCOL	PORTMAN T M	CAMP FOSTER
3D BN, 12TH MAR	LTCOL	HICKS M K	CAMP FOSTER
1STBN, 12TH MAR	LTCOL	FAVORS J D	MCAS KBAY HI
<u>1ST MAW</u>	BGEN	FORNEY W A	CAMP BUTLER
	COL	CURTIS I M	CAMP BUTLER
MWHS-1	LTCOL	BRAGDON G W	CAMP FOSTER
<u>MWSG-17</u>	COL	YOUNG C F	CAMP FOSTER
MWSS-171	LTCOL	SUMMERS S D	MCAS IWAKUNI
MWSS-172	LTCOL	SCOTT F M	MCAS FUTENMA
<u>MAQG-18</u>	COL	MCMILLAN B D	MCAS FUTENMA
MACS-4	LTCOL	SMITH T C	MCAS FUTENMA
MATCS-18	LTCOL	BOZELLI R J	MCAS FUTENMA
MWCS-18	LTCOL	LOGAN R R	CAMP FUTENMA
MASS-2	LTCOL	ISRAEL D T	MCAS FUTENMA
MTACS	LTCOL	KRATSAS G J	MCAS FUTENMA
1ST STINGER BATTERY	MAJ	KINNERUP J J	MCAS FUTENMA

NOTE - THIS INFORMATION IS UPDATED AS OF 940516 BY MULTIPLE SOURCES, I.E., SITREPS, PHONE CALLS, ETC.

PAGE J-4

FMF COMMANDERS AND LOCATIONS

UNCLASSIFIED

UNCLASSIFIED

FMF COMMANDERS AND LOCATIONS

<u>UNIT</u>	<u>GRADE</u>	<u>NAME</u>	<u>HOME LOCATION</u>
<u>MAG-12</u>	COL	KRUPP D T	MCAS IWAKUNI
MALS-12	LTCOL	HAMILTON E J	MCAS IWAKUNI
VMA-513	LTCOL	BAIN W F	KADENA AFB
VMFA(AW)-121	LTCOL	BORJE D J	MCAS IWAKUNI
VMAQ-4	LTCOL	RANN D P	MCAS IWAKUNI
VMFA-122	LTCOL	BRITT J A	MCAS IWAKUNI
<u>MAG-36</u>	COL	PEOPLES W C	MCAS FUTENNA
MALS-36	LTCOL	TULLY P A	MCAS FUTENNA
HMM-165	LTCOL	GISOLO G G	MCAS FUTENNA
HMM-262	LTCOL	FETZER B R	MCAS FUTENNA
HMH-462	LTCOL	DUNNIVAN R H	MCAS FUTENNA
HMLA-369	LTCOL	JINNETT M J	MCAS FUTENNA
VMGR-152	LTCOL	TYRA W D III	MCAS FUTENNA
<u>3D FSSG</u>	BGEN	HALLSTON E B	CAMP KINSER
	COL	BAILES R F	CAMP KINSER
HQSVC BN	LTCOL	CAMERON R J	CAMP KINSER
3D MAINT BN(-)	LTCOL	HAMPTON M L	CAMP KINSER
3D SUPPLY BN(-) (REIN)	COL	SMITH J E	CAMP KINSER
9TH ENGR SPT BN(-)	LTCOL	ENGELEN R L	CAMP HANSEN
3D LANDING SPT BN	COL	STROCK J M	CAMP FOSTER
3D DENTAL BN	CAPT	FAULL P W	USN CAMP FOSTER
3D MEDICAL BN	CDR	STODDARD S T	USN CAMP HANSEN
CSSD-36	LTCOL	KUHLW R F	MCAS IWAKUNI
<u>1ST MEB</u>	BGEN	VERCAUTEREN R F	MCAS KBAY HI
	COL	GANGLE R A	MCAS KBAY HI
BSSG-1	COL	HUGHEY G H	MCAS KBAY HI
B CO, 7TH COMM	CAPT	OLDLAND H G	MCAS KBAY HI
HQSVC CO	MAJ	KUEHL M A	MCAS KBAY HI
<u>3D MARINES</u>	COL	CORTEZ C	MCAS KBAY HI
1ST BN, 3D MAR	LTCOL	HUDDLESTON C S	MCAS KBAY HI
2D BN, 3D MAR	MAJ	NYBERG W N	MCAS KBAY HI
3D BN, 3D MAR	LTCOL	FRIEND L W	MCAS KBAY HI
1ST BN, 12TH MAR	LTCOL	FAVORS J D	MCAS KBAY HI
<u>MAG-24</u>	COL	FLANAGAN R M	MCAS KBAY HI
MALS-24	LTCOL	BURANOSKY J F	MCAS KBAY HI
MASS-174	LTCOL	DRIVER JR W C	MCAS KBAY HI
VMFA-235	LTCOL	DUGAN T P	MCAS KBAY HI
HMM-364	LTCOL	MCMAMARA P P	MCAS KBAY HI
HMH-463	LTCOL	GORDON T M	MCAS KBAY HI
HMM-265	LTCOL	HITCHOCK S E	MCAS KBAY HI

NOTE - THIS INFORMATION IS UPDATED AS OF 940512 BY MULTIPLE SOURCES, I.E., SITREPS, PHONE CALLS, ETC.

UNCLASSIFIED

FMF COMMANDERS AND LOCATIONS

<u>UNIT</u>	<u>GRADE</u>	<u>NAME</u>	<u>HOME LOCATION</u>
<u>FMFLANT</u>			
<u>MARFORLANT</u>		LITGEN KEYS W M	CAMP ELMORE VA
	(BG SEL)	COL AYRES R P JR	CAMP ELMORE VA
MCSFB		COL OTTINGER P R	NORFOLK VA
<u>FMFEUR DESIGNATE</u>			
<u>FMFEUR DESIGNATE</u>		LITGEN KEYS W M	LONDON UK
	C/S	COL(BG S) BYRUM B B	LONDON UK
<u>II MEF</u>			
<u>II MEF</u>		LITGEN KEYS W M	MCB CAMLEJ NC
DEPUTY COMMANDER		BGEN BRAATEN T A	MCB CAMLEJ NC
	C/S	COL BRINSON J A	MCB CAMLEJ NC
<u>2D SRI GRP</u>		COL BLACK D M	MCB CAMLEJ NC
H&S CO		LTCOL BLACKLEDGE M	MCB CAMLEJ NC
2D ANGLICO		LTCOL KELNER W R	MCB CAMLEJ NC
2D RADIO BN		LTCOL WITMER D L	MCB CAMLEJ NC
2D INTEL CO		LTCOL GARRABRANTS W M	MCB CAMLEJ NC
2D UAV CO		MAJ GRAIG C P	MCB CAMLEJ NC
2D FORECON CO		LTCOL SPIESE M E	MCB CAMLEJ NC
8TH COMM BN		LTCOL BENNETT M E	MCB CAMLEJ NC
<u>22D MEU(SOC)</u>		COL FOREBUSH M W	MCB CAMLEJ NC
BLT 1/8		LTCOL PAXTON J M	MCB CAMLEJ NC
HMM-162(REIN)		LTCOL SCHLEINING J E JR	MCB CAMLEJ NC
MSSG-22		LTCOL GRIMMETT J L	MCB CAMLEJ NC
<u>24TH MEU-</u>		COL BERNDT M R	MCB CAMLEJ NC
BLT 3/6		LTCOL YOUNG D H	MCB CAMLEJ NC
HMM-262(REIN)		LTCOL TAGG S	MCB CAMLEJ NC
MSSG-24		LTCOL(COL S) SEMMLER R W	MCB CAMLEJ
<u>26TH MEU(SOC)</u>		COL METZGER P T	MCB CAMLEJ NC
BLT 3/2		LTCOL WALDHAUSER T D	MCB CAMLEJ NC
HMM-365(REIN)		LTCOL DUNCAN W K	MCB CAMLEJ NC
MSSG-26		LTCOL WATTS D E	MCB CAMLEJ NC

NOTE - THIS INFORMATION IS UPDATED AS OF 940429 BY MULTIPLE SOURCES, I.E., SITREPS, PHONE CALLS, ETC.

FMF COMMANDERS AND LOCATIONS

<u>UNIT</u>	<u>GRADE</u>	<u>NAME</u>	<u>HOME LOCATION</u>
<u>2D MARDIV</u>	MGEN	NEAL R I	MCB CAMLEJ NC
	COL	BENSON JH	MCB CAMLEJ NC
	COL	CAHILL R E	MCB CAMLEJ NC
HQ BN, 2D MARDIV	LTCOL	PEAGLER J H	MCB CAMLEJ NC
2D CBT ENGR BN	MAJ	CUNNINGGS J T	MCB CAMLEJ NC
2D RECON BN	LTCOL	KERR C E	MCB CAMLEJ NC
2D TANK BN	LTCOL	DAVIS J W	MCB CAMLEJ NC
2D LAI BN	LTCOL	QUINLAN M J	MCB CAMLEJ NC
2D ASLT PHIB BN			
<u>2D MARINES</u>	COL	JONES T S	MCB CAMLEJ NC
1ST BN, 2D MAR	LTCOL	HEJLIK D J	MCB CAMLEJ NC
3D BN, 2D MAR	LTCOL	WALDHAUSER T D	MCB CAMLEJ NC
<u>6TH MARINES</u>	COL	HUCK R A	MCB CAMLEJ NC
1ST BN, 6TH MAR	LTCOL	ROBESON M M	MCB CAMLEJ NC
2D BN, 4TH MAR	LTCOL	ALLEN J R	MCB CAMLEJ NC
<u>8TH MARINES</u>	COL	BEAVERS J B	MCB CAMLEJ NC
2ND BN, 8TH MAR	LTCOL	TRYON R T	MCB CAMLEJ NC
3RD BN, 8TH MAR	LTCOL	GUNTHER C J	MCB CAMLEJ NC
<u>10TH MARINES</u>	COL	HUGHES D E	MCB CAMLEJ NC
1ST BN, 10TH MAR	LTCOL	MORRIS C W	MCB CAMLEJ NC
2D BN, 10TH MAR	LTCOL	WARD S C	MCB CAMLEJ NC
3D BN, 10TH MAR	LTCOL	CLICK R L	MCB CAMLEJ NC
5TH BN, 10TH MAR	LTCOL	DUNN K D	MCB CAMLEJ NC
<u>2D MAW</u>	MAJGEN	HOWELL J D JR	MCAS CHERPT NC
	COL(BG S)	NYLAND W	MCAS CHERPT NC
MWHS-2	LTCOL	BAEZ S. M.	MCAS CHERPT NC
<u>MWSG-27</u>	COL	LEONARD E M	MCAS CHERPT NC
MWSS-271	LTCOL	KELISH R A	MCAS CHERPT NC
MWSS-272	MAJ	KELLY B R	MCAS NEW RIVER NC
MWSS-273	LTCOL	MARSHALL S A	MCAS BFT SC
MWSS-274	LTCOL	GRELSON J D	MCAS CHERPT NC
PSD-27	MAJ	MURPHY J P	MCAS CHERPT NC
<u>MACG-28</u>	COL	LEVAN K B	MCAS CHERPT NC
MATCS-28	LTCOL	GIANI V C	MCAS CHERPT NC
MACS-6	LTCOL	SCHALK R F	MCAS CHERPT NC
MWCS-28	LTCOL	WARWICK M B	MCAS CHERPT NC
MASS-1	LTCOL	HILL P R	MCAS CHERPT NC
3D LAAM BN	LTCOL	ADKINS T M	MCAS CHERPT NC
2D LAAD BN	LTCOL	MADDOCKS R A JR	MCAS CHERPT NC
MACS-2	LTCOL	NOBLE J E	MCAS CHERPT NC
MATCS-28	LTCOL	CARINO L J	MCAS CHERPT NC

NOTE - THIS INFORMATION IS UPDATED AS OF 940419 BY MULTIPLE SOURCES, I.E., SITREPS, PHONE CALLS, ETC.

UNCLASSIFIED

FMF COMMANDERS AND LOCATIONS

<u>UNIT</u>	<u>GRADE</u>	<u>NAME</u>	<u>HOME LOCATION</u>
<u>MAG-14</u>	COL	REITEN R P	MCAS CHERPT NC
MALS-14	LTCOL	PENNINGTON R D	MCAS CHERPT NC
VMA-231	LTCOL	MADRIGAN B N	MCAS CHERPT NC
VMGR-252	LTCOL	BRONARS B E	MCAS CHERPT NC
VMAQ-1	LTCOL	SHUTTER III P F	MCAS CHERPT NC
VMAQ-2	LTCOL	JOHNSON R B	MCAS CHERPT NC
VMAQ-3	LTCOL	BURGIN III P F	MCAS CHERPT NC
VMGR-253	LTCOL	WILLIAMS A W	MCAS CHERPT NC
VMA-223	LTCOL	DUNCAN G W F	MCAS CHERPT NC
VMA 542	LTCOL	LEFFLER K C	MCAS CHERPT NC
VMAT-203	LTCOL	THUM M W	MCAS CHERPT NC
PSD-14	MAJ	CANTRELL B P	MCAS CHERPT NC
VMAQ-4	LTCOL	RANN D P	MCAS CHERPT NC
<u>MAG-26</u>	COL	LAVOY D J	MCAS NEW RIVER NC
MALS-26	LTCOL	HAYN G J	MCAS NEW RIVER NC
HMLA-167	LTCOL	KERNEN K M	MCAS NEW RIVER NC
HMM-261	LTCOL	REYNOLDS A M	MCAS NEW RIVER NC
HMM-264	LTCOL	ZELL A J	MCAS NEW RIVER NC
HMH-362	LTCOL	PEATROSS M	MCAS NEW RIVER NC
HMH-461	LTCOL	SMITH S H	MCAS NEW RIVER NC
HMT-204	LTCOL	FERGUSON F W	MCAS NEW RIVER NC
PSD-26	LTCOL	JAGIELSKI J M	MCAS NEW RIVER NC
<u>MAG-29</u>	COL	OLSON M L	MCAS NEW RIVER NC
MALS-29	LTCOL	JOHNSON D K	MCAS NEW RIVER NC
HMLA-269	LTCOL	ST. PIERRE R E	MCAS NEW RIVER NC
HMM-263	LTCOL	BARTIS D T	MCAS NEW RIVER NC
HMM-365	LTCOL	TAYLOR S P	MCAS NEW RIVER NC
HMH-464	LTCOL	LENDERMAN J E JR	MCAS NEW RIVER NC
PSD-29	CWO5	HUNTER G L	MCAS NEW RIVER NC
<u>MAG-31</u>	COL	CARIWRIGHT J E	MCAS BFT SC
MALS-31	LTCOL	MEAD S A	MCAS BFT SC
VMFA-122	LTCOL	BRITT J A	MCAS BFT SC
VMFA(AW)-332	LTCOL	CONDRAM E	MCAS BFT SC
VMFA-251	LTCOL	SCHIMIDLE R E	MCAS BFT SC
VMFA-312	LTCOL	BRICKELL R W	MCAS BFT SC
VMFA-451	LTCOL	DANIELS E A	MCAS BFT SC
VMFA(AW)-533	LTCOL	POST M	MCAS BFT SC
VMFA(AW)-224	LTCOL	KERNEN D J	MCAS BFT SC
PSD-31	LTCOL	KARNATH M W	MCAS BFT SC
VMFA-115	LTCOL	GRAHAM J W	MCAS BFT SC

NOTE - THIS INFORMATION IS UPDATED AS OF 940419 BY MULTIPLE SOURCES, I.E., SITREPS, PHONE CALLS, ETC.

UNCLASSIFIED

~~UNCLASSIFIED~~

FMF COMMANDERS AND LOCATIONS

<u>UNIT</u>		<u>GRADE</u>	<u>NAME</u>	<u>HOME LOCATION</u>
<u>2D FSSG</u>		BGEN	WILLIAMS M J	MCB CAMLEJ NC
	C/S	COL(BG S)	MCKISSOCK G S	MCB CAMLEJ NC
HQSVC BN		LTCOL	DICKERSON R C	MCB CAMLEJ NC
2D MAINT BN		LTCOL	COLEMAN R S	MCB CAMLEJ NC
8TH MT BN		LTCOL	WILLIAMS K R	MCB CAMLEJ NC
2D SUPPLY BN		COL	MELLON R G	MCB CAMLEJ NC
8TH ENGR SPT BN		LTCOL	CUTCHALL G C	MCB CAMLEJ NC
2D LANDING SPT BN		LTCOL	REDLICH D C	MCB CAMLEJ NC
2D DENTAL BN		CAPT	WERRELL J M (USN)	MCB CAMLEJ NC
2D MEDICAL BN		CMDR	RENKIN R W (USN)	MCB CAMLEJ NC

MARINE RESERVE FORCE

<u>MARINE RESERVE FORCE</u>		<u>GRADE</u>	<u>NAME</u>	<u>HOME LOCATION</u>
	C/S	MAJGEN	LIVINGSTON J E	NEW ORLEANS LA
		COL	HICKERSON R	NEW ORLEANS LA
CG 2D MEB		BGEN	SHORTAL D L	MCB CAMLEJ NC
3D FORECON CO		LTCOL	NELSON D E	MOBILE AL
4TH FORECON CO		MAJ	GIN R M	HONOLULU HI
6TH COMM BN		LTCOL	ST CLAIR R B	FT SCHUYLER NY
3D ANGLICO		LTCOL	CRUZ A P	LONG BEACH CA
4TH ANGLICO		LTCOL	BOULTON B L	W. PALM BEACH FL
3D CAG		COL	KROMM M	LOS ANGELES CA
4TH CAG		COL	CHASE E L	ANACOSTIA MD
<u>4TH MARDIV</u>		MAJGEN	HARVEY A C	NEW ORLEANS LA
	C/S	COL	SACHTLEBEN J L	NEW ORLEANS LA
HQ BN, 4TH MARDIV		MAJ	GRUBBS L D	NEW ORLEANS LA
4TH CBT ENGR BN		LTCOL	COOK T M	BALTIMORE MD
4TH RECON BN		LTCOL	HUBBARD C L	SAN ANTONIO TX
4TH TANK BN		LTCOL	THOMPSON F M	NAS MIRAMAR CA
8TH TANK BN		LTCOL	HILLSDORF C C	ROCHESTER NY
4TH LAI BN		LTCOL	CONRAD M J	MCB CAMPEN CA
4TH ASLT PHIB BN		LTCOL	WARD R E	TAMPA FL
<u>23D MARINES</u>		COL	PETERSON W H III	NAS ALAMEDA CA
1ST BN, 23D MAR		LTCOL	MITCHELL J L	HOUSTON TX
2D BN, 23D MAR		LTCOL	BODDINGTON C T	ENCINO CA
3D BN, 23D MAR		LTCOL	KOBEL K M	NEW ORLEANS LA
<u>24TH MARINES</u>		COL	HICKS F	KANSAS CITY MO
1ST BN, 24TH MAR		LTCOL	HUGHES M K	DETROIT MI
2D BN, 24TH MAR		LTCOL	FORNEY J C	CHICAGO IL
3D BN, 24TH MAR		LTCOL	HUDON R L	ST LOUIS MO

NOTE - THIS INFORMATION IS UPDATED AS OF 940419 BY MULTIPLE SOURCES, I.E., SITREPS, PHONE CALLS, ETC.

UNCLASSIFIED

FMF COMMANDERS AND LOCATIONS

<u>UNIT</u>	<u>GRADE</u>	<u>NAME</u>	<u>HOME LOCATION</u>
<u>25TH MARINES</u>	COL	CONRY K A	WORCESTER MA
1ST BN, 25TH MAR	LTCOL	MOORE J J	CAMP EDWARDS MA
2D BN, 25TH MAR	LTCOL	CARROLL J J	GARDEN CITY NY
3D BN, 25TH MAR	LTCOL	SEVOLD J M	CLEVELAND OH
<u>14TH MARINES</u>	COL	STUART L A	NAS DALLAS TX
1ST BN, 14TH MAR	LTCOL	HART K P	TREASURE IS CA
2D BN, 14TH MAR	LTCOL	VETETO P D	NAS DALLAS TX
3D BN, 14TH MAR	LTCOL	MEARS J A	PHILADELPHIA PA
4TH BN, 14TH MAR	LTCOL	WILLIAMS H T	BESSEMER AL
5TH BN, 14TH MAR	COL	BLOOM P W	LOS ANGELES CA
<u>4TH MAW</u>	CG	MAJGEN TAYLOR L S	NEW ORLEANS LA
	C/S	COL MALONEY J M	NEW ORLEANS LA
MWHS-4		LTCOL O'NEIL L P	NAS BELLE CHASSE LA
<u>MWSG-47</u>	COL	GEE D M	ANGC SELFRIDGE MI
MWSS-471	LTCOL	CUSICK R M	NAS DALLAS TX
MWSS-472	LTCOL	MATRANGA D	NAS MARIETTA GA
MWSS-473	LTCOL	PAPPAS D A	MCAS EL TORO CA
MWSS-474	LTCOL	GUIDOTTI A J	PHILADELPHIA PA
<u>MACG-48</u>	COL	BACHILLER R M	NAS GLENVIEW IL
MACS-24, DET A	LTCOL	BROWNLEE M A	ANGCB BUCKLEY CO
MACS-24	LTCOL	WEBB G E	NAS DAM NECK VA
MATCS-48	LTCOL	NUNNALLY M E	NAS MEMPHIS TN
MWCS-48	LTCOL	HALSE D F	NAS GLENVIEW IL
MASS-6	MAJ	DONAHUE K W	NAS S. WEYMOUTH MA
4TH LAAM BN	LTCOL	ORTIZ K P	MCRTC FRESNO CA
4TH LAAD BN	LTCOL	HOCKING C F	PASADENA CA
<u>MAG-41</u>	COL	GOODMAN J F	NAS DALLAS TX
MALS-41	LTCOL	MCAFEE J M	NAS DALLAS TX
VMA-124	LTCOL	OEHL W F	NAS MEMPHIS TN
VMFA-112	LTCOL	PIASECKI R F	NAS DALLAS TX
VMGR-334	LTCOL	ROBERTSON S	NAS GLENVIEW IL
HML-776	LTCOL	MOORE R K	NAS GLENVIEW IL
<u>MAG-42</u>	COL	BEAVER D B	NAS MARIETTA GA
MALS-42	LTCOL	CARMICHAEL D L	NAS MARIETTA GA
VMFA-142	LTCOL	MADDENWALD F A	NAS CECIL FIELD FL
HML-767	LTCOL	WAITES J C	NAS BELLE CHASSE LA
HMM-774	LTCOL	CRONAUER V T	NAS NORFOLK VA
HMA-773	LTCOL	EIKENBERRY R C	NAS MARIETTA GA
VMO-4	LTCOL	BIRCHER M W	NAS MARIETTA GA

NOTE - THIS INFORMATION IS UPDATED AS OF 940419 BY MULTIPLE SOURCES, I.E., SITREPS, PHONE CALLS, ETC.

UNCLASSIFIED

UNCLASSIFIED

FMF COMMANDERS AND LOCATIONS

<u>UNIT</u>	<u>GRADE</u>	<u>NAME</u>	<u>HOME LOCATION</u>
<u>MAG-46</u>	COL	DUDLEY A S JR	MCAS EL TORO CA
MALS-46	LTCOL	WEISS D L	MCAS EL TORO CA
VMFA-134	LTCOL	FOLTYN R W	MCAS EL TORO CA
HMA-775	LTCOL	SOUZA P M	MCB CAMPEN CA
HMM-764	MAJ	QUINLAN F E	MCAS EL TORO CA
VMFT-301	LTCOL	BREEN J D III	MCAS YUMA AZ
<u>MAG-49</u>	COL	SIMPSON V A	NAS WILLOW GROVE PA
MALS-49	LTCOL	WEDGE P	NAS WILLOW GROVE PA
VMA-131	LTCOL	LAKE G C	NAS WILLOW GROVE PA
VMFA-321	LTCOL	HESS J R	ANDREWS AFB MD
VMGR-452	LTCOL	JAMES D E	NEWBURGH NY
HMH-772	LTCOL	RICH S M	NAS WILLOW GROVE PA
HML-771	LTCOL	WNEK R F	NAS S. WEYMOUTH MA
<u>4TH FSSG</u>	BGEN	HOLLINGSWORTH B G	NEW ORLEANS LA
DEPUTY COMMANDER	COL	PARADIS E E	NEW ORLEANS LA
HQSVC BN	LTCOL	REEVES D R	NAS MARIETTA GA
4TH MAINT BN	LTCOL	MARSHBANKS K L	CHARLOTTE NC
6TH MT BN	LTCOL	COLLERY J P	RED BANK NJ
4TH SUPPLY BN	COL	MOYNIHAN D C	NEWPORT NEWS VA
6TH ENGR SPT BN	LTCOL	ARGUEDAS A J	PORTLAND OR
4TH LANDING SPT BN	LTCOL	PAYNE E G	SEATTLE GA
4TH DENTAL BN	CAPT	BUTLER M F (USN)	NAS MARIETTA GA
4TH MEDICAL BN	CAPT	ROLOFF M V (USN)	NAS MARIETTA GA

NOTE - THIS INFORMATION IS UPDATED AS OF 940419 BY MULTIPLE SOURCES, I.E., SITREPS, PHONE CALLS, ETC.

UNCLASSIFIED

POS
27 MAY 94

INFORMATION PAPER

Subj: CURRENT MARINE CORPS COUNTERDRUG (CD) OPERATIONS (U)

1. (U) Southwest Border (JTF-6)

a. (U) The Marine Corps is currently providing the following operational support:

<u>OPERATION</u>	<u>TYPE</u>	<u>DATES</u>	<u>LOCATION</u>	<u>UNIT/PERS</u>
JT-248-94	Intel Analyst	940315-940721	Los Angeles, CA	RESFOR/1
JT-244-94	Intel Analyst	940328-940721	San Diego, CA	RESFOR/2
JT-228-94	LP/OP	940502-940528	Los Padres, CA	I MEF/75
2A30-94	Linguist	940502-940729	Miami, FL	RESFOR/2
JT-285-94	LP/Intel	940523-940631	Lincoln Nat For	RESFOR/53
JT-082A-94	Engineer	940601-940715	San Bernadino, CA	RESFOR/35
082B-94	Engineer	940601-940715	San Bernadino, CA	RESFOR/35
082C-94	Engineer	940601-940715	Riverside, CA	RESFOR/30
JT-172-94	Air	940601-940931	Cleveland For, CA	RESFOR/4
JT-229-94	LP/OP	940601-940627	Los Padres, CA	II MEF/75
JT-234-94	LP/OP	940602-940628	Los Padres, CA	I MEF/75

b. (U) The following operational support is in planning:

<u>OPERATION</u>	<u>TYPE</u>	<u>DATES</u>	<u>LOCATION</u>	<u>UNIT/PERS</u>
JT-275-94	LP/OP	940604-940619	Sells, AZ	RESFOR/100
JT-025-94	Engineer	940606-940713	Pasadena, CA	II MEF/35
JT-205-94	LP/Intel	940606-940621	Santa Monica, CA	II MEF/8
JT-335-94	Intel	940606-940902	El Paso, TX	RESFOR/2

CONFIDENTIAL

JT-203-94 Intel 940613-941001 Dallas, TX RESFOR/1
 JT-178-94 LP/OP 940615-940715 Angeles For, CA I MEF/75
 JT-285-94 LP/OP 940615-940630 Lincoln For, NM I MEF/50
 JT-JT-404 Engineer 940615-940730 Cleveland For, CA 3 MAW/35

2. (U) Latin America (SOUTHCOM)

a. (C) USMILGP, BOGOTA/BARRANQUILLA. COLOMBIA MARITIME LIAISON TEAM (MLT)

Forces USMC: 1 Enl (E-4)
 Location Barranquilla, Colombia; and as directed throughout Colombia.
 Purpose Initially deployed as part of a four-man MLT to work in support of the Combined Planning Group (CPG) in Bogota to provide advice and planning for Host Nation CD operations. Presently located in Barranquilla with the MLT performing coordination tasks in support of operation JOLLY ROGER (a JTF-4 lead CD operation). The MLT coordinates the activities of Colombian and U. S. forces in an effort to produce an endgame on targets identified by other D&M sources.

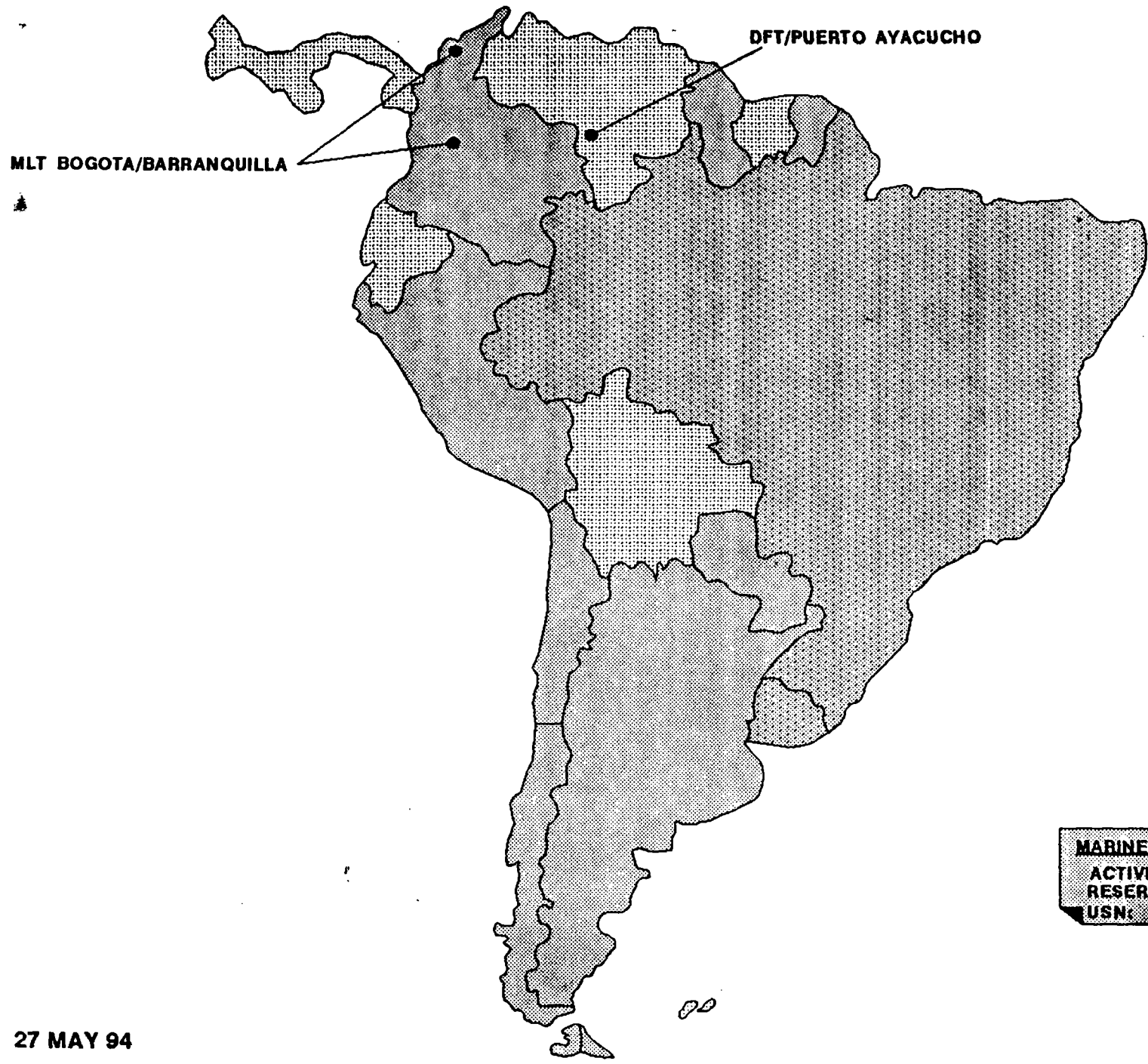
b. (C) DFT, PUERTO AYACUCHO, VENEZUELA. USN/USMC RIVERINE DFT.

Forces USN: 28, USMC: 2
 Location Vicinity of Puerto Ayacucho, Venezuela.
 Purpose A 30 member DFT team has deployed to Venezuela to train and acquire enhanced area orientation, language and cultural experience that will be beneficial to the conduct of future US CD activities. Joint and combined CD training will be the focus. The entire team will re-deploy O/A 30 May 94.

CONFIDENTIAL

UNCLASSIFIED

SOUTHCOM COUNTERDRUG SUPPORT



PAGE K-3
CURRENT MARINE CORPS COUNTERDRUG OPERATIONS

DATE: 27 MAY 94

UNCLASSIFIED
UNCLASSIFIED

USMC CD SUPPORT TO JTF-6

<u>LOCATION</u>	<u>OPERATION</u>	<u>TYPE</u>	<u>DATES</u>	<u>UNIT</u>
Los Angeles, CA	JT-248-94	Intel Analyst	15 Mar-21 Jul 94	RESFOR

One Marine from MARRESFOR is providing intel analyst support to the Southern California Drug Task Force Agencies in analyzing accumulated volumes of raw information data to support the investigative efforts in progress of the land, air and maritime drug trafficking enforcement in the Los Angeles, CA., area.

San Diego, CA	JT-244-94	Intel Analyst	28 Mar-21 Jul 94	RESFOR
---------------	-----------	---------------	------------------	--------

Two Marines from MARRESFOR are providing intel analyst support to the U.S. Border Patrol in analyzing accumulated volumes of raw information data to support the investigation efforts in progress of the land, air and maritime drug trafficking enforcement in the San Diego, Ca. area.

Los Padres, CA	JT-228-94	LP/OP	02 May-28 May 94	I MEF
----------------	-----------	-------	------------------	-------

75 Marines from I MEF are conducting military training consisting of LP/OPs, ground reconnaissance, aerial reconnaissance and intel analysis training in the vicinity of Los Padres National Forest, Ca.

Miami, FL	2A30-94	Linguist	02 May-29 May 94	RESFOR
-----------	---------	----------	------------------	--------

Two Marines from MARRESFOR are conducting military training support operations by listening to taped copies of Spanish language telephone conversations, transcribing the dialogue into a written format, and translating the transcription into English in support of counterdrug activities.

Lincoln Nat For, NM	JT-285-94	Intel/LP/OP	23 May-31 Jun 94	RESFOR
---------------------	-----------	-------------	------------------	--------

53 Marines are conducting military training consisting of intel analysis, ground reconnaissance and LP/OP operations in the vicinity of Lincoln National Forest, NM, a vicinity known as a counterdrug smuggling area. The intel analyst (1 Marine) commences 23 May and ends 8 June 94. The LP/OP operation (52 Marines) commences 15 June and ends 31 June 94.

San Bernadino, CA	JT-082A-94	Engineer	01 Jun-15 Jul 94	RESFOR
	082B-94	Engineer	01 Jun-15 Jul 94	RESFOR
	082C-94	Engineer	01 Jun-15 Jul 94	RESFOR

100 Marines from MARRESFOR are constructing a rappelling tower, shooting house and enlarging an existing weapons firing range in support of counterdrug operations in the vicinity of San Bernadino and Riverside, Ca. assisting the San Bernadino County Sheriffs Dept.

UNCLASSIFIED
PAPER

USMC CD SUPPORT TO JTF-6

<u>LOCATION</u>	<u>OPERATION</u>	<u>TYPE</u>	<u>DATES</u>	<u>UNIT</u>
Cleveland For, CA	JT-172-94	Air	01 Jun-13 Sep 94	RESFOR

Four Marines from MARRESFOR are conducting aerial/reconnaissance/Flir missions with LEA personnel embarked aboard the aircraft to spot illegal drug activities in the vicinity of Orange, San Bernadino, Riverside, San Diego and Imperial Counties in the Cleveland National Forest, CA.

Los Padres, CA	JT-229-94	LP/OP	01 Jun-27 Jun 94	II MEF
----------------	-----------	-------	------------------	--------

75 Marines from II MEF are conducting military training operations consisting of LP/OPs, ground reconnaissance, aerial reconnaissance, LEA aerial transportation and an intelligence analysis team in the vicinity of Los Padres National Forest, CA., a known drug trafficking area.

Los Padres, CA	JT-234-94	LP/OP	02 Jun-28 Jun 94	I MEF
----------------	-----------	-------	------------------	-------

75 Marines from I MEF are conducting military training operations consisting of Lp/OPs, ground reconnaissance, aerial reconnaissance, LEA aerial transportation and an intelligence analysis team in the vicinity of Los Padres National Forest, CA., a known drug trafficking area.

UNCLASSIFIED
PAPER

UNCLASSIFIED

JTF-6 COUNTERDRUG SUPPORT

MARINES COMMITTED	
ACTIVE:	225
RESERVE:	160

LP/OP (75)
LOS PADRES, CA

LP/OP (75)
LOS PADRES, CA

LP/OP (75)
LOS PADRES, CA

INTEL ANALYST (1)
LOS ANGELES, CA

INTEL ANALYST (2)
SAN DIEGO, CA

ENGINEER (100)
SAN BERNADINO, CA

AIR (4)
CLEVELAND FOR, CA

INTEL/LP/OP (53)
LINCOLN, NATFOR,
NM

PAGE K-6
CURRENT MARINE CORPS COUNTERDRUG OPERATIONS

DATE: 27 MAY 94

UNCLASSIFIED
UNCLASSIFIED

~~SECRET~~

CURRENT OPERATIONS BRANCH OPERATIONAL SUMMARY



THIS PAGE INTENTIONALLY LEFT BLANK

~~SECRET~~

~~SECRET~~

CURRENT OPERATIONS BRANCH OPERATIONAL SUMMARY



THIS PAGE INTENTIONALLY LEFT BLANK

~~SECRET~~